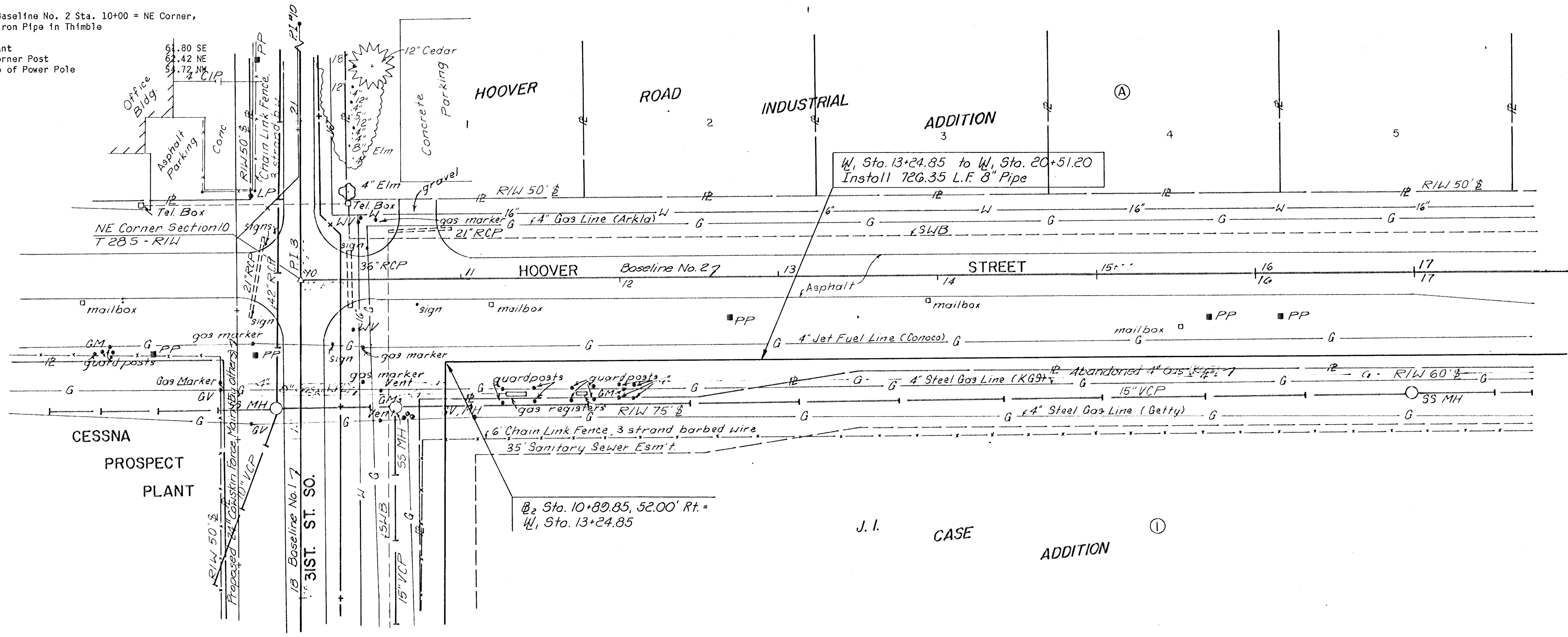
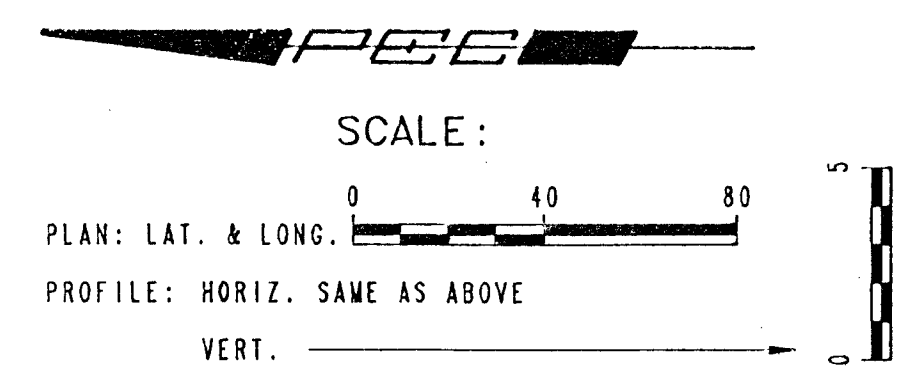


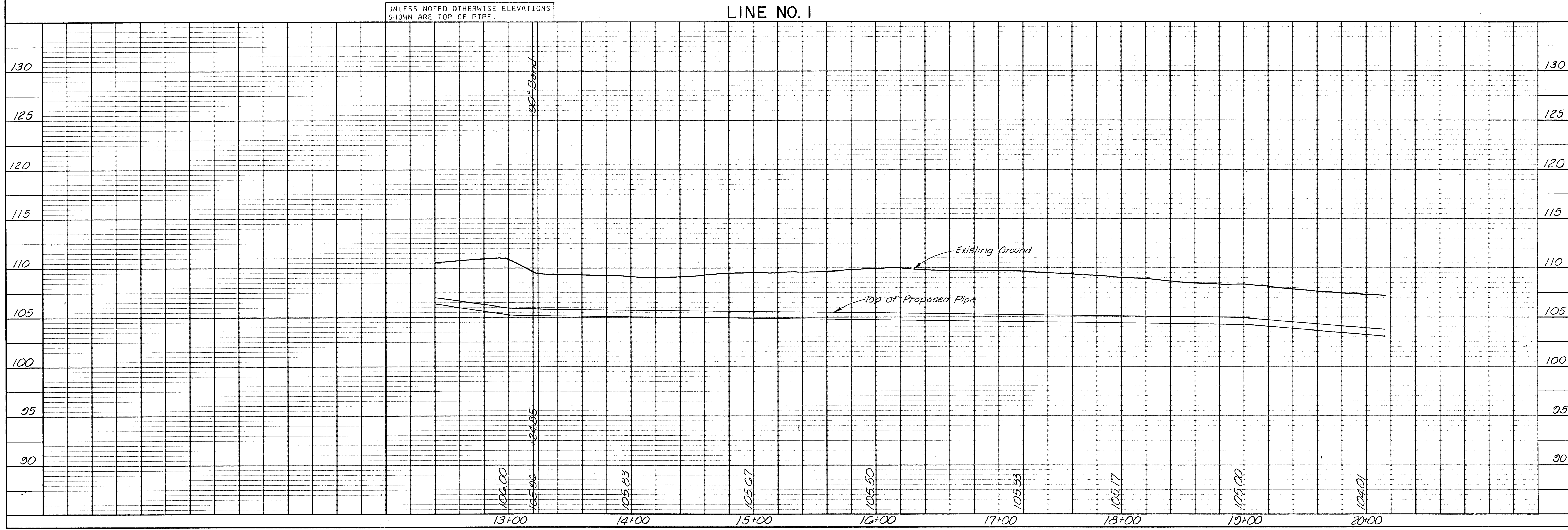
PI #3 Baseline No. 1 Sta. 20+00 = Baseline No. 2 Sta. 10+00 = NE Corner, Section 10, T28S, R1W, 3/4" Iron Pipe in Thimble

1. Top Center of Fire Hydrant
2. Center of Steel Fence Corner Post
3. Nail and Shiner NNE Face of Power Pole



PLAN	CHECKED	DATE
NO.	BY	
NOTE BOOK		
ALIGNMENT CHECKED		
RT. OF WAY CHECKED		

PROFILE	CHECKED	DATE
NO.	BY	
NOTE BOOK		
GRADES CHECKED		
STRUCTURE NOTATIONS CHECKED		



UNLESS NOTED OTHERWISE ELEVATIONS SHOWN ARE TOP OF PIPE.

LINE NO. 1

PROFESSIONAL ENGINEERING CONSULTANTS, P.A.
 ENGINEERS
 WICHITA, KANSAS

CESSNA AIRCRAFT COMPANY
 WICHITA, KANSAS

LINE NO. 1
 W Sta. 13+24.85 to W Sta. 20+51.20
 WITHDRAWAL WATERLINE IMPROVEMENTS

Designed by MDS, C.R.Y.
 Drawn by MKK, T.L.S., G.V.

Job No. 34-87042
 Date August, 1988

Sht. 8 of 20