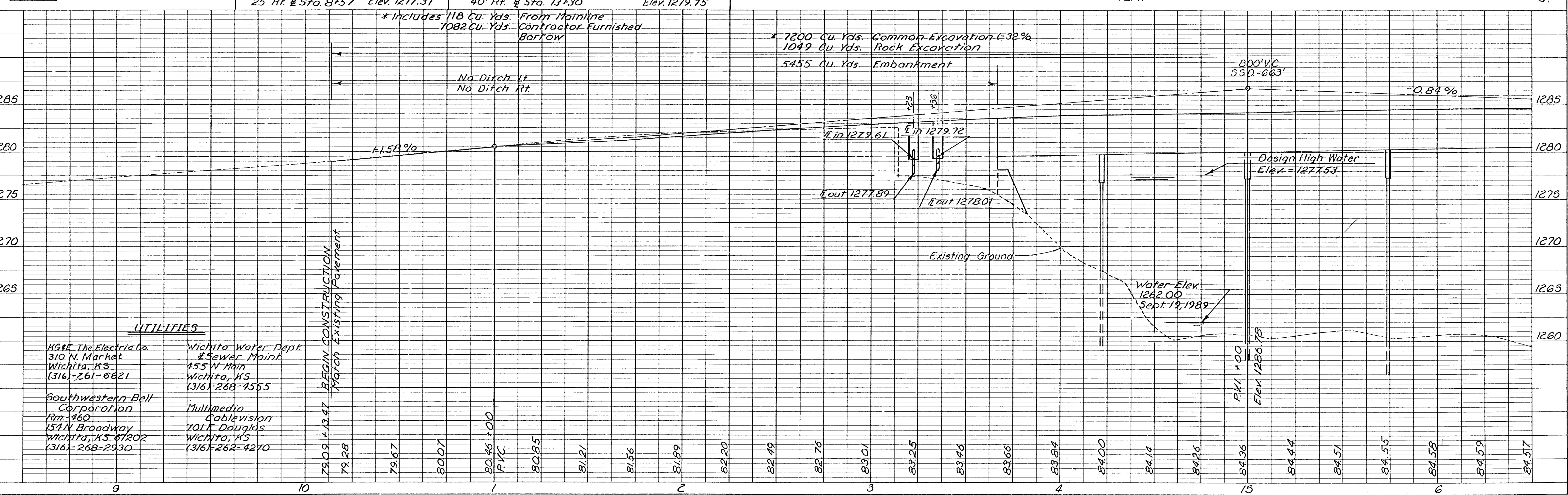
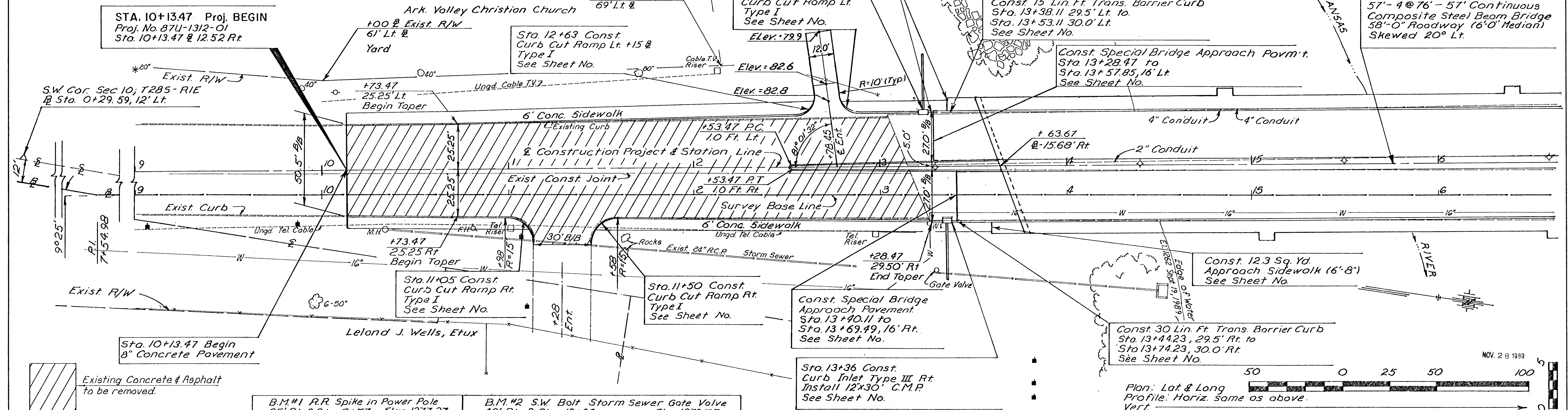


S.W. Cor. Sec. 10; T28S; R1E
 (12.00' Lt. @ Sta. 0+29.59)
 1. Iron Pin @ Cor. (Fnd)
 2. Nail & Bottle Cap in Power Pole 63.06' N.W.
 3. Top of & Vent Pipe 41.52' S.W.
 4. Top of & Vent Pipe 48.89' S.E.

PI @ Sta. 7+54.98 Ahd ($\Delta=9^{\circ}25'$; $R=2913.98'$)
 1. "x" Cut in Conc. Pavmt @ PI
 2. Nail & Bottle Cap in Power Pole 45.70' S.S.E.
 3. W. Face of W. Ent. Sign Post to Drive In. 27.52' N.E.
 4. "a" Cut @ E. Curb Return N. Side of Drive In Ent. 71.21' N.

F.H.W.A. REGION NO.	STATE	PROJECT NO.	FISCAL YEAR	SHEET NO.	TOTAL SHEETS
7	KANSAS	87U-1312-01		3	13



UTILITIES

K&M The Electric Co. 310 N. Market Wichita, KS (316)-261-8621	Wichita Water Dept. & Sewer Maint. 455 N. Main Wichita, KS (316)-268-4565
Southwestern Bell Corporation Rm. 460 154 N. Broadway Wichita, KS 67202 (316)-268-2930	Multimedia Cablevision 701 E. Douglas Wichita, KS (316)-262-4270