

F.H.W.A. REGION NO.	STATE	PROJECT NO.	FISCAL YEAR	SHEET NO.	TOTAL SHEETS
7	KANSAS	87U-1312-01		4	13

P.O.T. @ Sta. 22+35.58  
 1. 1" Cut in Conc. Pavmt @ P.O.T.  
 2. E Joint of N. Bd. Hydraulic Ave.  
 3. Top Ctr. N.W. Bolt of Light Pole Base  
 4. S.W. Cor. of E. Sidewalk of I-35 & Hydraulic Ave. Overpass

052° S.W.  
 28.90' E.S.E.  
 83.32' N.

Const. 12.3 Sq. Yds. Approach Sidewalk See Sheet No.

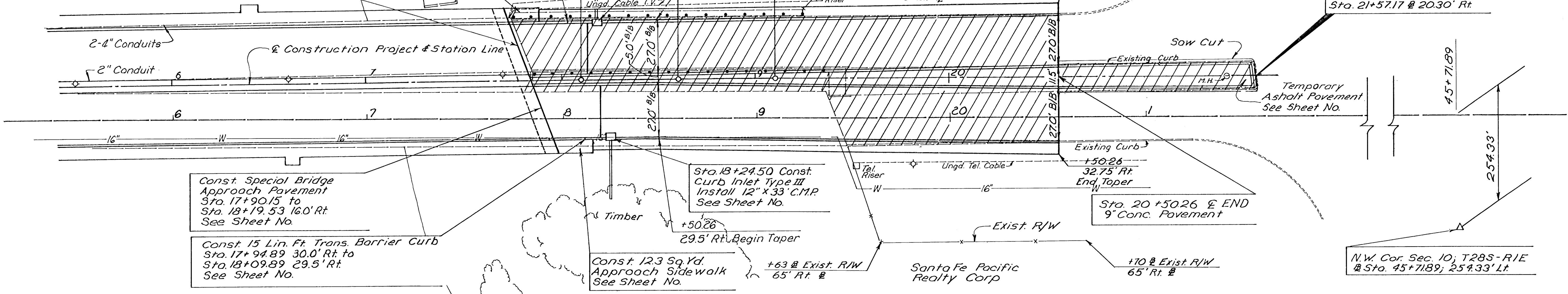
Const. 30 Lin. Ft. Trans. Barrier Curb Sta. 17+73.41 30.0' Rt. to Sta. 18+03.41 29.5' Rt. See Sheet No.

Sta. 18+13 Const. Curb Inlet Type III Lt. Install 12" x 30" C.M.P. See Sheet No.  
 +50.26  
 29.5' Lt. Begin Taper

& Curve Data (Arc. Def)  
 P.I. @ Proj. Sta. 18+59.76 Ahd. & Bk.  
 20.16 Ft. Lt. @ Sta. 18+59.73  
 $\Delta = 0^\circ 30' 00''$  Rt. Super N.C. =  $\frac{3}{16}$  per Ft.  
 $D = 0^\circ 30' 00''$   
 $R = 11,459.16$   
 $T = 50.00'$   
 $L = 100.00'$   
 $E = 0.1091'$   
 $C = 99.9997$

N.W. Cor. Sec. 10; T28S-R1E (25433' Rt. Extended @ Sta. 45+71.89)  
 1. 1" Ø Galv. Pipe @ Cor. (Found)  
 2. Nail & Bottle Cap in Power Pole 42.25' S.W.  
 3. Top Ctr. Fire Hydrant 47.40' N.W.  
 4. Nail & Bottle Cap in Power Pole 49.25' N.E.

Const. Special Bridge Approach Pavement Sta. 17+78.51 to Sta. 18+07.89 16.0' Lt. See Sheet No.



Const. Special Bridge Approach Pavement Sta. 17+90.15 to Sta. 18+19.53 16.0' Rt. See Sheet No.

Const. 15 Lin. Ft. Trans. Barrier Curb Sta. 17+94.89 30.0' Rt. to Sta. 18+09.89 29.5' Rt. See Sheet No.

Sta. 18+24.50 Const. Curb Inlet Type III Install 12" x 33" C.M.P. See Sheet No.

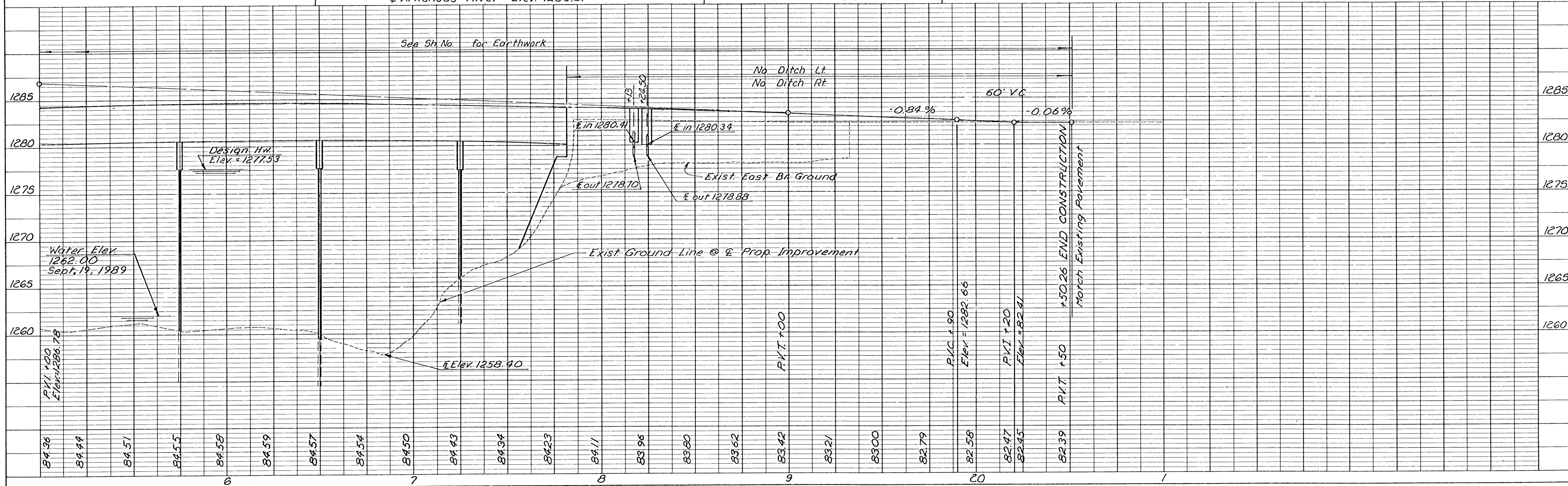
Const. 12.3 Sq. Yd. Approach Sidewalk See Sheet No.

Sta. 20+50.26 & END 9" Conc. Pavement

B.M. #3 @ Sta. 19+41 15' Rt. City of Wichita Disk N.E. Cor. E. Br. Hydraulic Ave. & Arkansas River Elev. = 1283.87

B.M. #4 @ Sta. 19+66 104' Rt. R.R. Spike in Power Pole Elev. = 1276.56

NOV. 28 1989



DATE	BY	REVISION

DATE	BY	REVISION