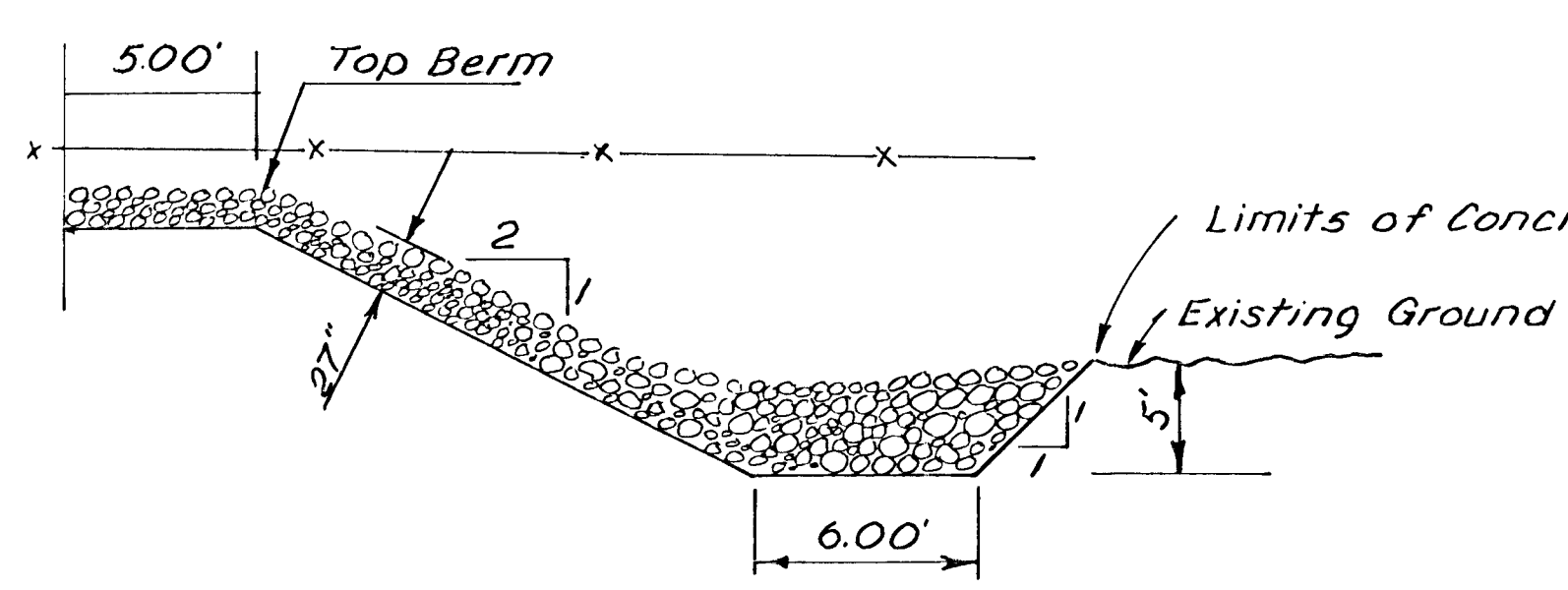
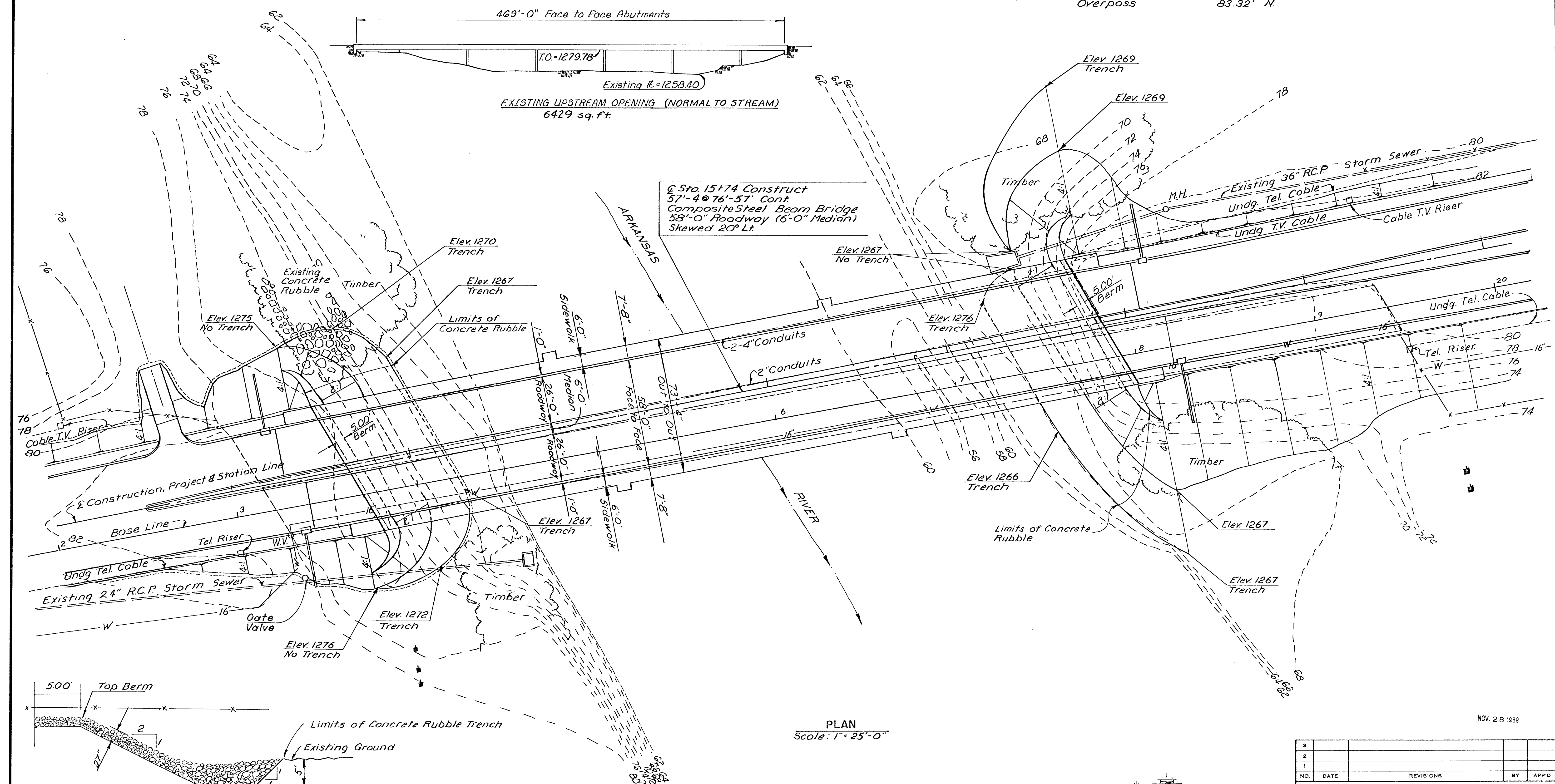


P.I. @ Sta. 7+54.98 Ahd ($\Delta=9^{\circ}25'$; $R=2913.98$)
 1. 1" Cut in Conc. Pavement @ P.I.
 2. Nail & Bottle Cap in Power Pole
 3. W. Face of W. Ent. Sign Post to Drive-In (At Ground) 45.70' S.S.E.
 4. 4" Cut @ E. Curb return N. Side of Drive-In Ent. 27.52' N.E.
 71.21' N.

P.O.T. @ Sta. 22+35.58
 1. 1" Cut in Conc. Pavement @ P.O.T.
 2. Joint of N. End. Hydraulic Ave
 3. Top Ctr. NW bolt of Light Pole Base
 4. S.W. Cor. of E. Sidewalk of I-35 & Hydraulic Ave. Overpass
 83.32' N.

F.H.W.A. REGION NO.	STATE	PROJECT NO.	FISCAL YEAR	SHEET NO.	TOTAL SHEETS
7	KANSAS	87U-1312-01		5	13



PLAN
 Scale: 1" = 25'-0"

NOV. 28 1989

B.M. #2 @ Sta. 13+30 40' Rt. S.W. Bolt Storm Sewer Gate Valve Elev. = 1279.75	B.M. #3 @ Sta. 19+41 15' Rt. City of Wichita Disk N.E. Cor. Br. Hydraulic Ave. & Arkansas River Elev. 1283.87	B.M. #4 @ Sta. 19+66 104' Rt. R.R. Spike in Power Pole Elev. = 1276.56
---	--	--

NO.	DATE	REVISIONS	BY	APP'D
3				
2				
1				

CITY OF WICHITA
 SOUTH HYDRAULIC AVE. BRIDGE OVER
 ARKANSAS RIVER
 BR. NO. 000A10 & 000A20 STA. 15+74.00
 CONTOUR MAP

PROJ. NO. 87U-1312-01 SEDGWICK CO.

MID CONTINENT ENGINEERS	SALINA WICHITA KANSAS	DESIGNED M.L.P.	SCALE
		DETAILED D.L.R.	DATE
		QUANTITIES	SHEET OF