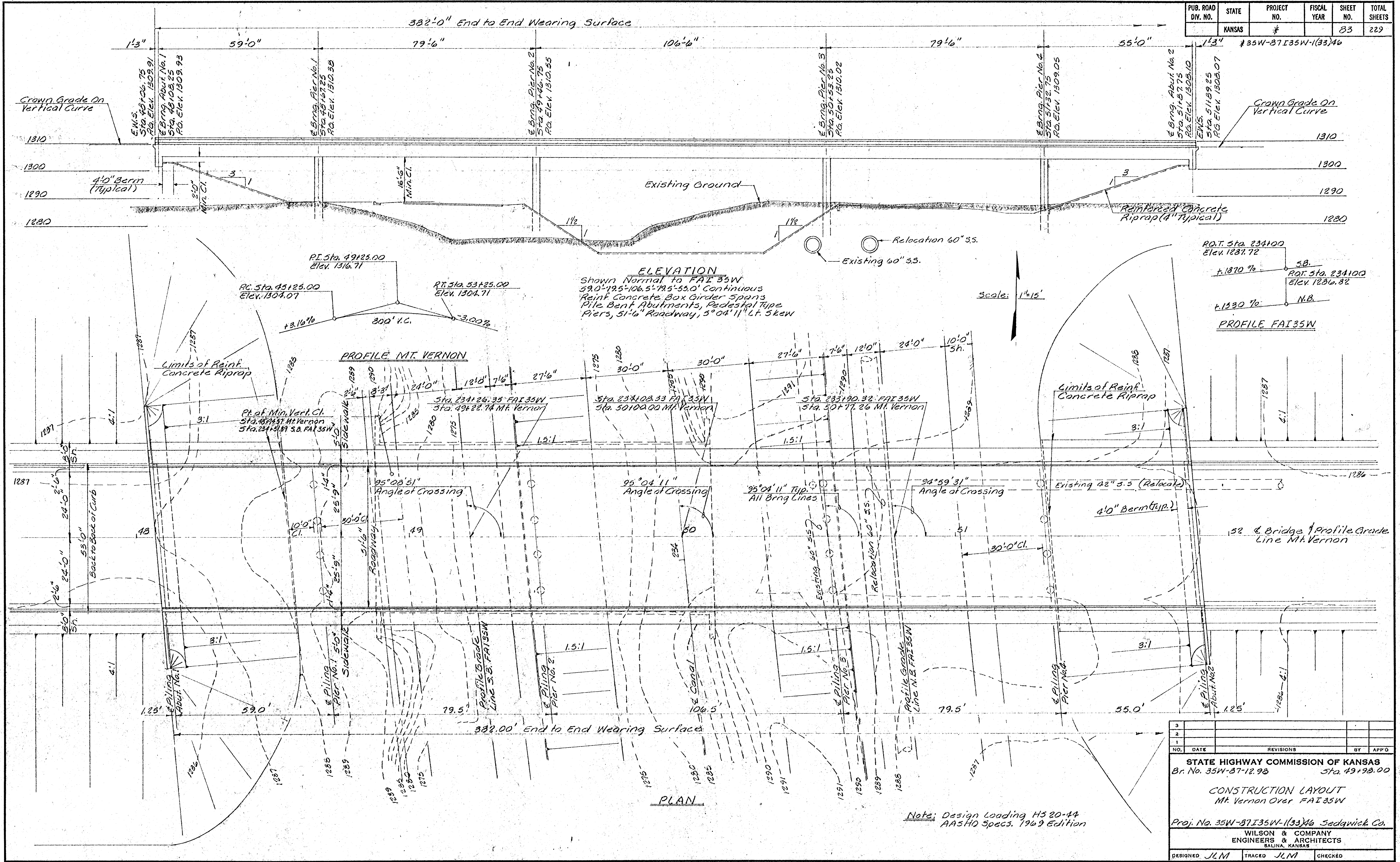


PUB. ROAD DIV. NO.	STATE	PROJECT NO.	FISCAL YEAR	SHEET NO.	TOTAL SHEETS
	KANSAS	#		83	229



NO.	DATE	REVISIONS	BY	APPRO
1				
2				
3				

STATE HIGHWAY COMMISSION OF KANSAS
 Br. No. 35W-87-12.98 Sta. 49+98.00

CONSTRUCTION LAYOUT
 Mt. Vernon Over FAI 35W

Proj. No. 35W-87I35W-(133)46 Sedawick Co.
 WILSON & COMPANY
 ENGINEERS & ARCHITECTS
 SALINA, KANSAS

DESIGNED JLM TRACED JLM CHECKED