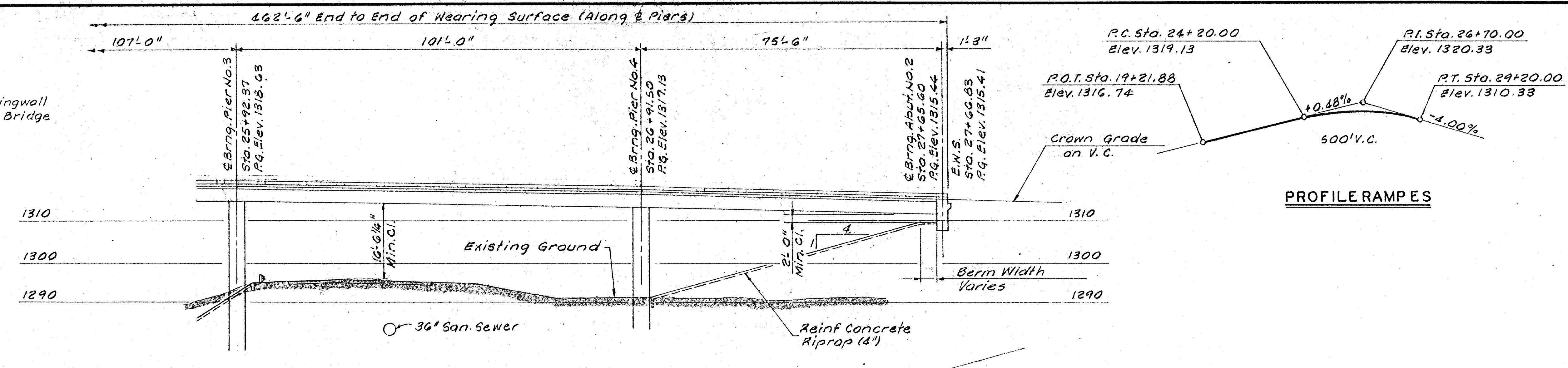


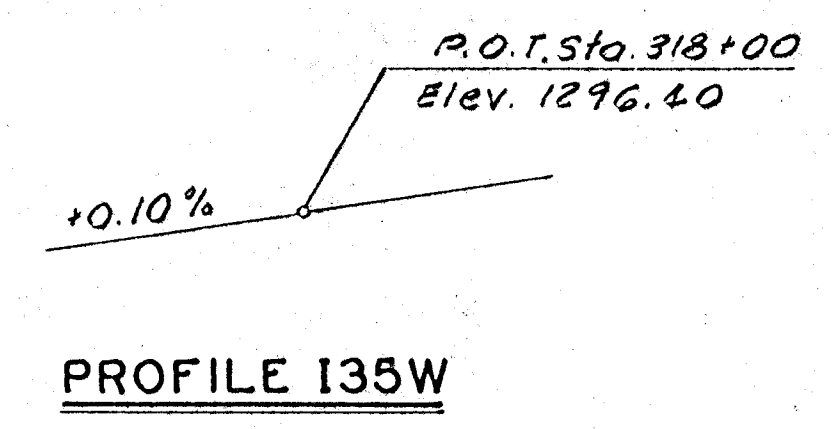
PUB. ROAD DIV. NO.	STATE	PROJECT NO.	FISCAL YEAR	SHEET NO.	TOTAL SHEETS
5	KANSAS	*	1970	103	229

* 35W-87135W-1(33)46
 B.M. S Rim M.H. South of Kellogg 9' West of Pattie Elev. 1295.00

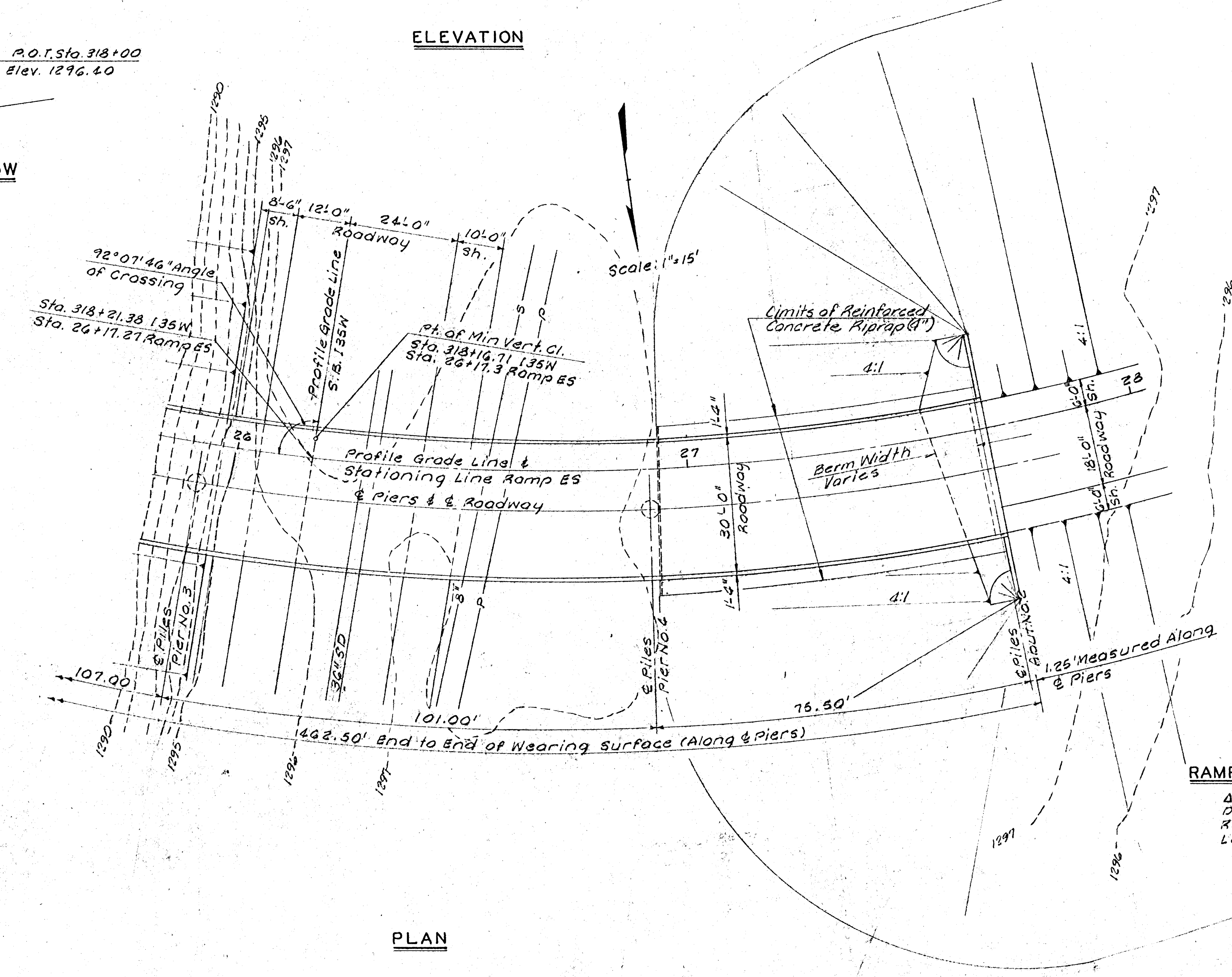
B.M. "a" SW. Wingwall Kellogg Canal Bridge Elev. 1297.54



PROFILE RAMPES



PROFILE 135W



PLAN

RAMPES CURVE DATA (ARC DEF.)

$\Delta = 147^\circ 17' 17''$
 $Dc = 12^\circ 0'$
 $Rc = 477.46$
 $Lc = 1227.40$

Note: Design Loading HS 20-44
 AASHTO Specs. 1969 Edition
 and P.R.M. 20-4

NO.	DATE	REVISIONS	BY	APP'D

STATE HIGHWAY COMMISSION OF KANSAS
 BR. NO. 35W-87-14.58 STA. 25+38.75

**CONSTRUCTION LAYOUT
 RAMP ES OVER 135W**

PROJ. NO. 35W-87 135W-1(33)46 SEDGWICK CO.

WILSON & COMPANY
 ENGINEERS & ARCHITECTS
 SALINA, KANSAS

DESIGNED J. L. M. TRACED J. F. B. CHECKED