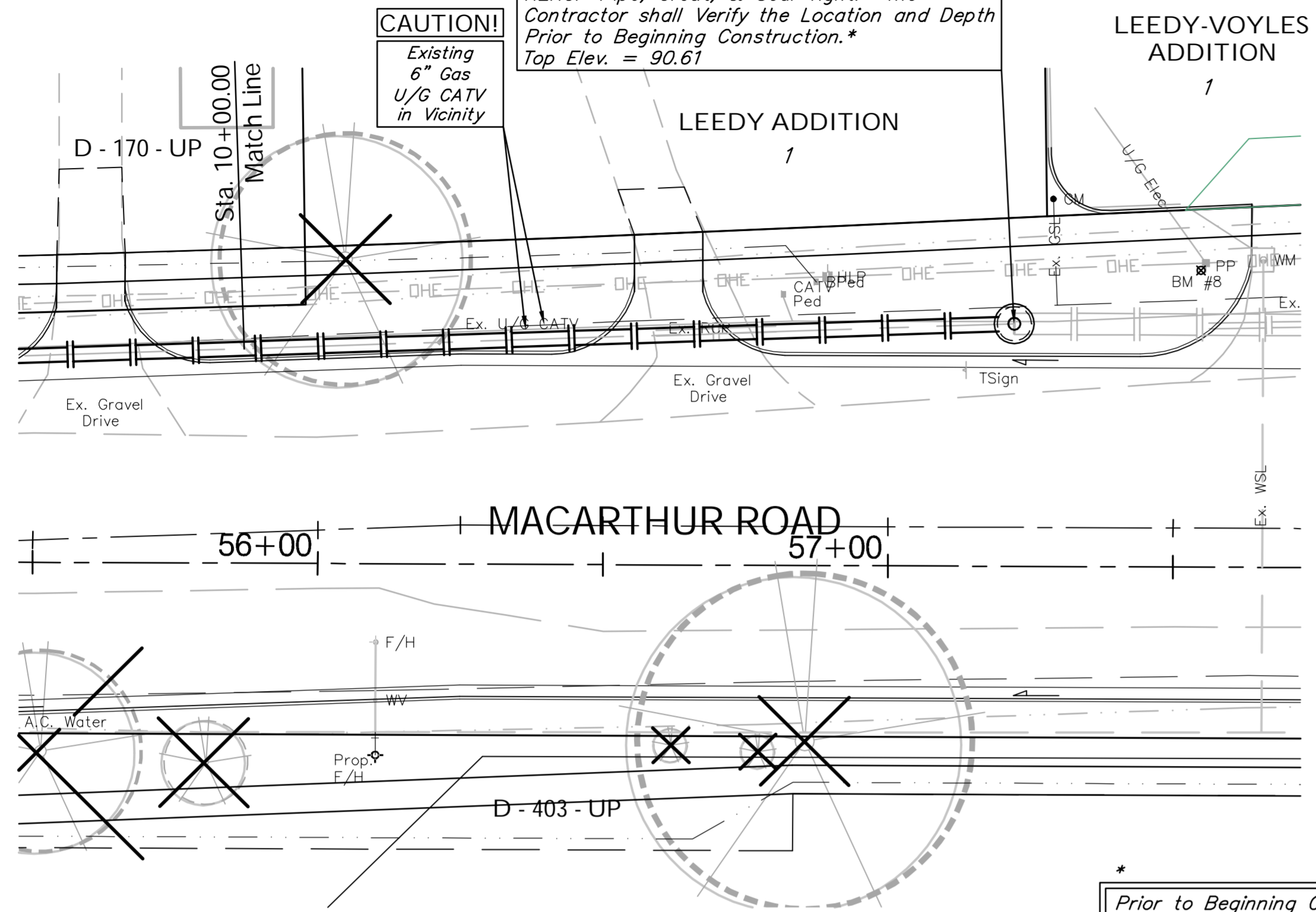


BENCHMARK:
 BM #8 - Railroad Spike in the First Power Pole West of the Car Wash Drive on the North Side of MacArthur
 Sta. 57+56, 53' Lt.
 Elev. = 93.11 City Datum

Sta. 11+35.17, End SWS Line 5 =
 B.L. Sta. 57+22.00, 42.52' Lt.
 Construct Std. Shallow Type "P" Manhole (6' Dia.)
 Remove Ex. Plug and Connect Ex. 45" X 29" HERCP Pipe, Grout, & Seal Tight. The Contractor shall Verify the Location and Depth Prior to Beginning Construction.*
 Top Elev. = 90.61

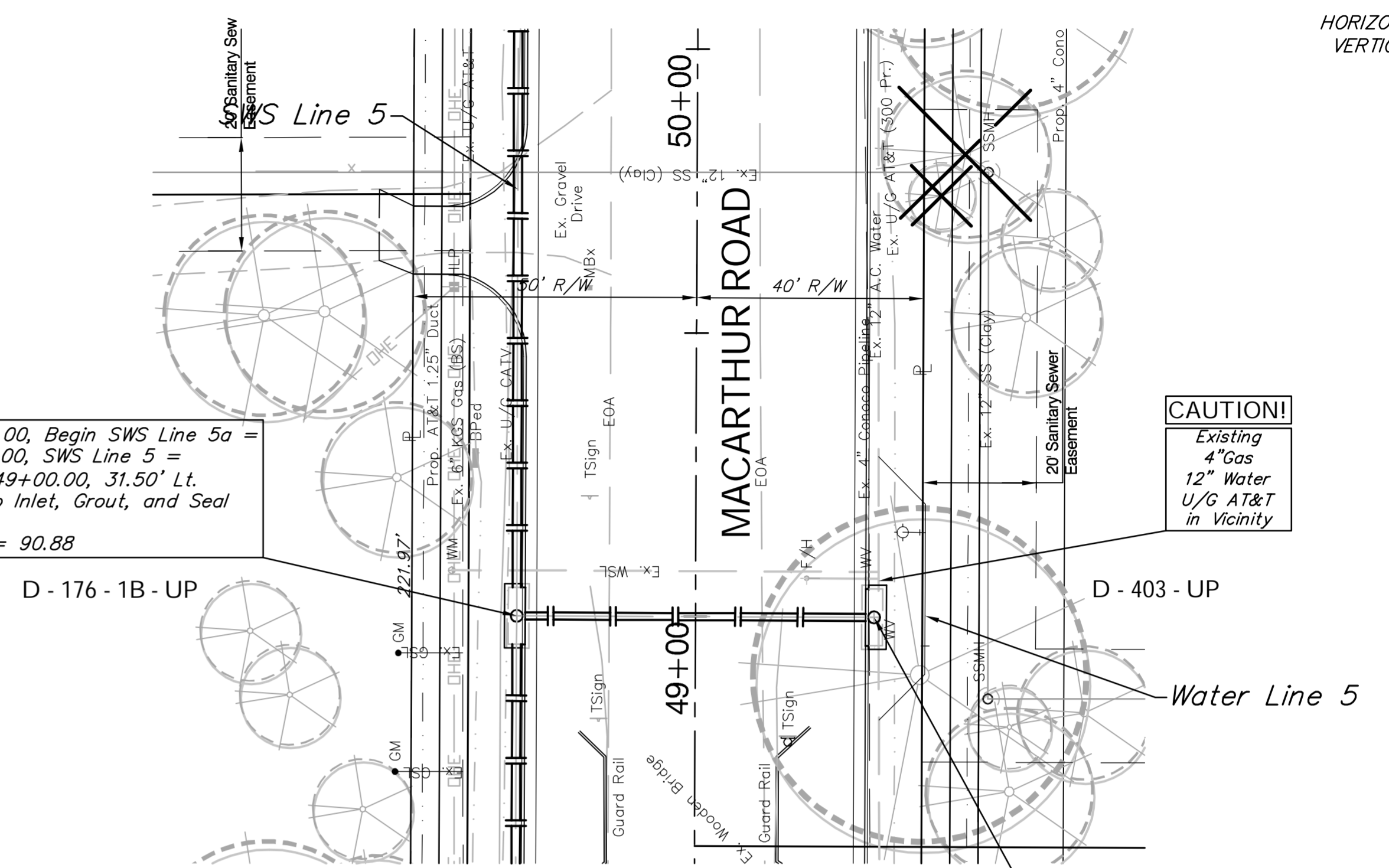


SCALE:
 HORIZONTAL: 1" = 20'
 VERTICAL: 1" = 5'

* Prior to Beginning Construction, the Contractor Shall Excavate the Ex. 45" X 29" HERCP Stub to Verify Size and Location. The Contractor Shall Report Back the Engineer So That Any Necessary Modifications Can Be Made. This Work Shall be Considered SUBSIDIARY to the Project.

BENCHMARK:
 BM #7 - Railroad Spike in the Third High Line Pole East of Fern on the North Side of MacArthur
 Sta. 52+09, 43' Lt.
 Elev. = 94.52 City Datum

Sta. 0+00.00, Begin SWS Line 5a =
 Sta. 3+13.00, SWS Line 5 =
 B.L. Sta. 49+00.00, 31.50' Lt.
 Connect to Inlet, Grout, and Seal Tight.
 Top Elev. = 90.88



SCALE:
 HORIZONTAL: 1" = 20'
 VERTICAL: 1" = 5'

Sta. 0+63.00, End SWS Line 5a =
 B.L. Sta. 49+00.00, 31.50' Rt.
 Construct Inlet (Double) (Type 1) (11' 4" X 4' 4")
 Top Elev. = 90.88

