

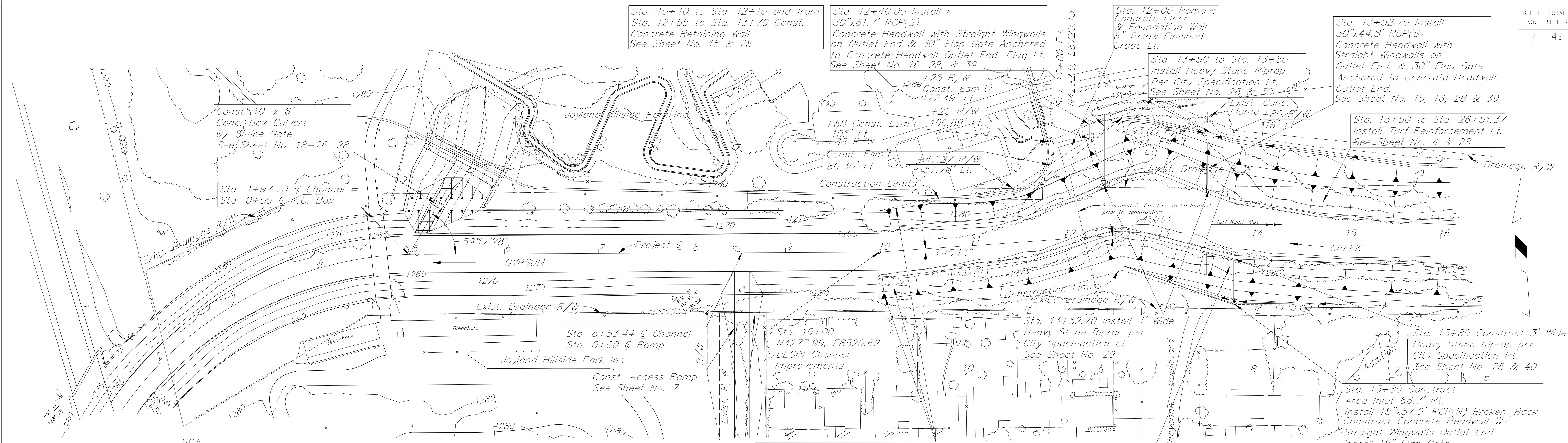
Sta. 10+40 to Sta. 12+10 and from Sta. 12+55 to Sta. 13+70 Const. Concrete Retaining Wall See Sheet No. 15 & 28

Sta. 12+40.00 Install * 30"x61.7' RCP(S) Concrete Headwall with Straight Wingwalls on Outlet End & 30" Flap Gate Anchored to Concrete Headwall Outlet End, Plug Lt. See Sheet No. 16, 28, & 39

Sta. 12+00 Remove Concrete Floor & Foundation Wall 6" Below Finished Grade Lt.

Sta. 13+52.70 Install 30"x44.8' RCP(S) Concrete Headwall with Straight Wingwalls on Outlet End & 30" Flap Gate Anchored to Concrete Headwall Outlet End. See Sheet No. 15, 16, 28 & 39

Sta. 13+50 to Sta. 26+51.37 Install Turf Reinforcement Lt. See Sheet No. 4 & 28

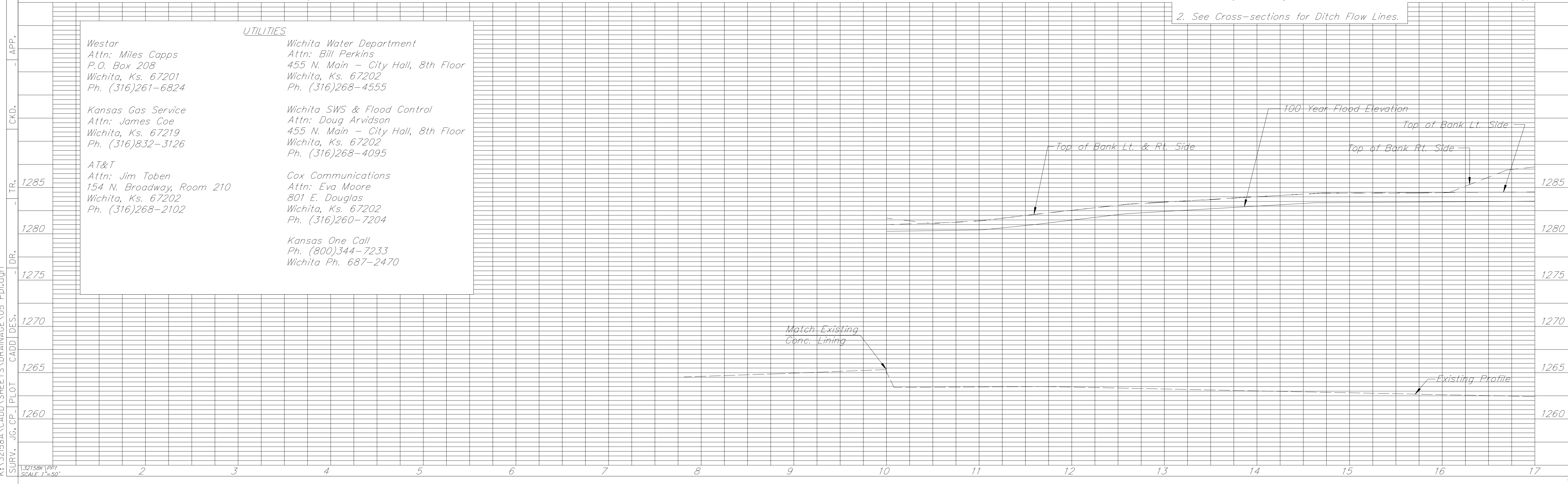


Guy Wire to be relocated prior to construction

Sta. 10+00 to Sta. 13+50 Install Articulated Concrete Block Mats Open Cell Class 40 Lt. & Rt. See Sheet No. 4 & 28

Sta. 13+50 to Sta. 26+02.29 Install Turf Reinforcement Rt. See Sheet No. 4 & 28

Note:
 *1. Contractor to locate & connect possible drainage structure in this area potentially draining low area under & west of coaster (Subsidiary).
 *2. See Cross-sections for Ditch Flow Lines.



UTILITIES	
Westar Attn: Miles Capps P.O. Box 208 Wichita, Ks. 67201 Ph. (316)261-6824	Wichita Water Department Attn: Bill Perkins 455 N. Main - City Hall, 8th Floor Wichita, Ks. 67202 Ph. (316)268-4555
Kansas Gas Service Attn: James Coe Wichita, Ks. 67219 Ph. (316)832-3126	Wichita SWS & Flood Control Attn: Doug Arvidson 455 N. Main - City Hall, 8th Floor Wichita, Ks. 67202 Ph. (316)268-4095
AT&T Attn: Jim Toben 154 N. Broadway, Room 210 Wichita, Ks. 67202 Ph. (316)268-2102	Cox Communications Attn: Eva Moore 801 E. Douglas Wichita, Ks. 67202 Ph. (316)260-7204
	Kansas One Call Ph. (800)344-7233 Wichita Ph. 687-2470

K:\32158A\CADD\SHEETS\DRAINAGE\05 PPl.dgn
 SURV. JG, CP, PLOT CADD DES.
 12158A.PPT
 SCALE 1"=50'