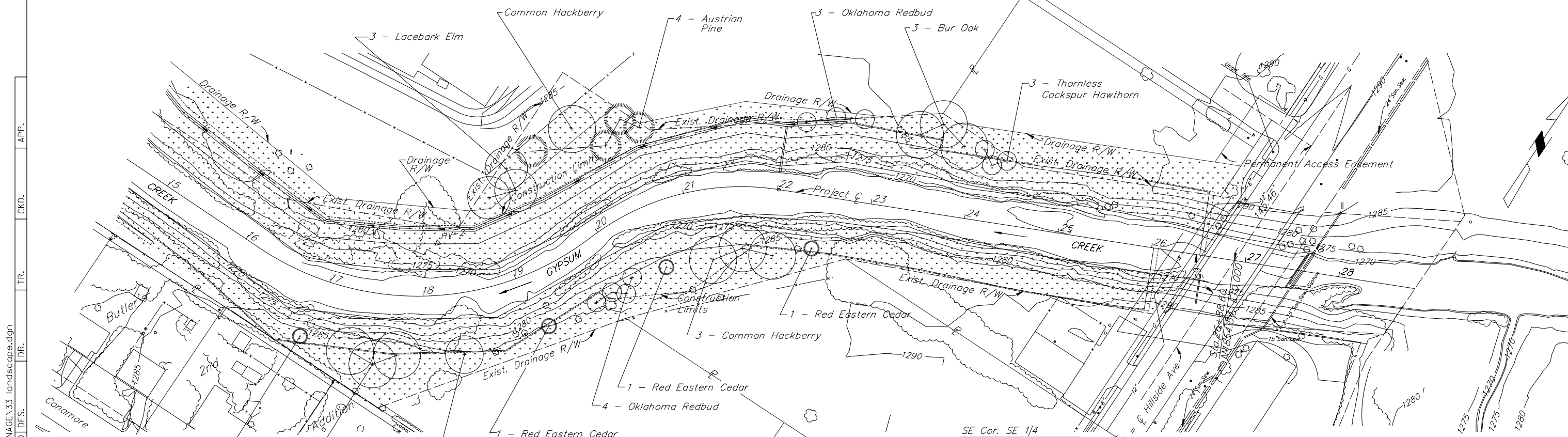


**LUMP SUM LANDSCAPING BID ITEMS:**

PLANT LIST (For Information Only)

Quantity	Common Name	Botanical Name	Size and Condition
6	Bur Oak	<i>Quercus macrocarpa</i>	2 - 2-1/2" cal. BB
4	Common Hackberry	<i>Celtis occidentalis</i>	2 - 2-1/2" cal. BB
3	Lacebark Elm	<i>Ulmus parvifolia</i>	2 - 2-1/2" cal. BB
1	Osage Orange	<i>Malcura pomifera var. enermis (male)</i>	2 - 2-1/2" cal. BB
4	Austrian Pine	<i>Pinus nigra</i>	5 - 6' Ht. BB
3	Thornless Cocksbur Hawthorn	<i>Crataegus crusgalli inermis</i>	1 - 1-1/4" cal. BB
7	Oklahoma Redbud	<i>Cercis reniformis "Oklahoma"</i>	1 - 1-1/4" cal. BB
4	EAstern Red Cedar	<i>Cercis reniformis "Oklahoma"</i>	5 - 6' Ht. BB

5 Acres Hydro-Seed Area Shown plus all disturbed Area See Specs. Sht. No. 37



k:\32158A\CADD\SHEETS\DRAINAGE\33 landscape.dgn  
 SURV. JG, CP, PLOT CADD DES. DR. TR. CKD. APP.

SE Cor. SE 1/4  
 Section 3, T28S, R1E  
 Thimble  
 N2348.57, E10,000

- LEGEND**
- RED EASTERN CEDAR
  - DECIDUOUS TREE LOCATION
  - EVERGREEN TREE LOCATION
  - AREA TO BE HYDRO-SEEDED

CITY OF WICHITA  
 JAMES ARMOUR, P.E., CITY ENGINEER

GYP SUM CREEK

LANDSCAPE PLAN

CITY OF WICHITA PROJECT NO. 468-82473

**PB PARSONS BRINCKERHOFF**  
 Wichita, Kansas

SCALE \_\_\_\_\_ DATE 11/27/2007 DWG. NO. 32158A