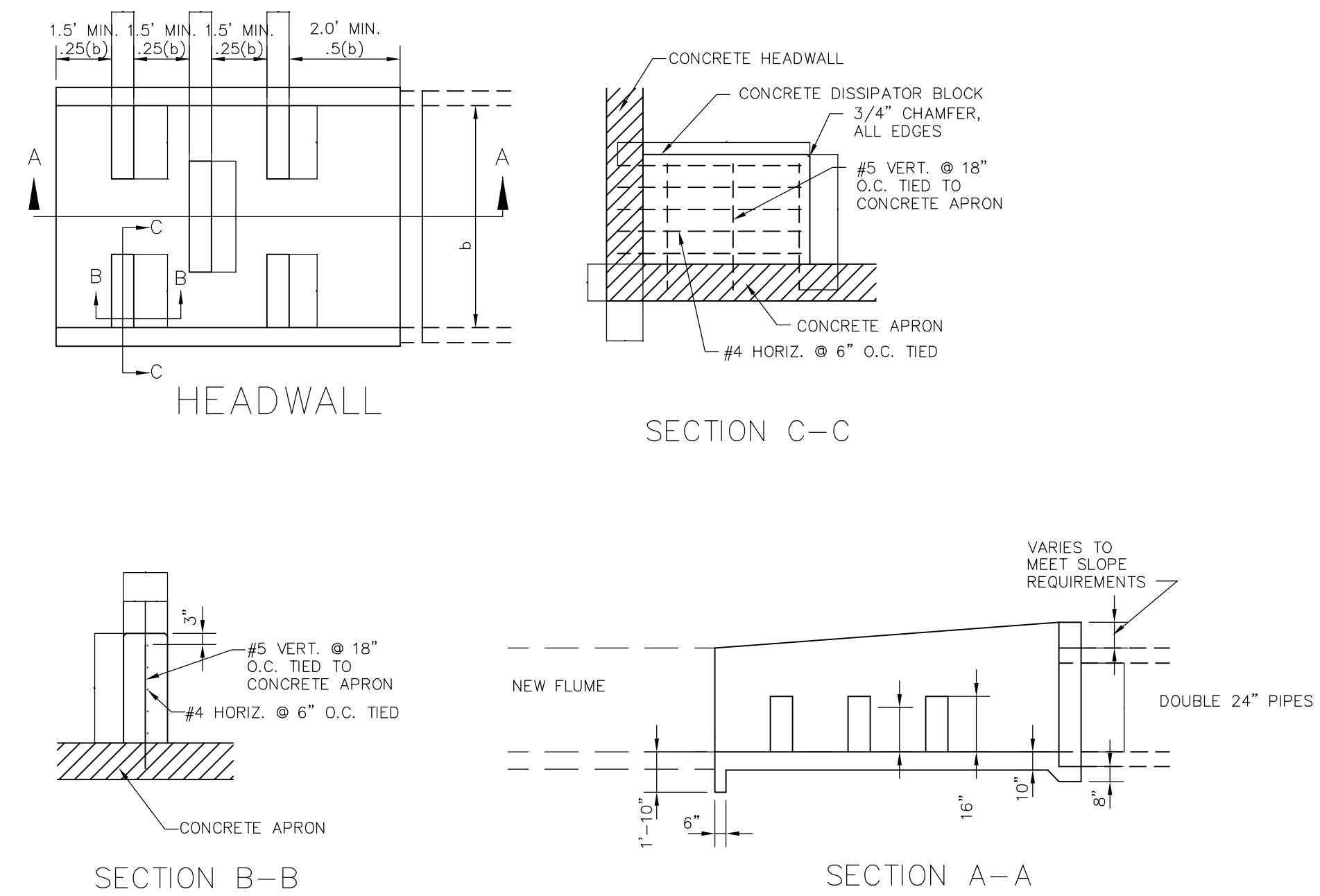


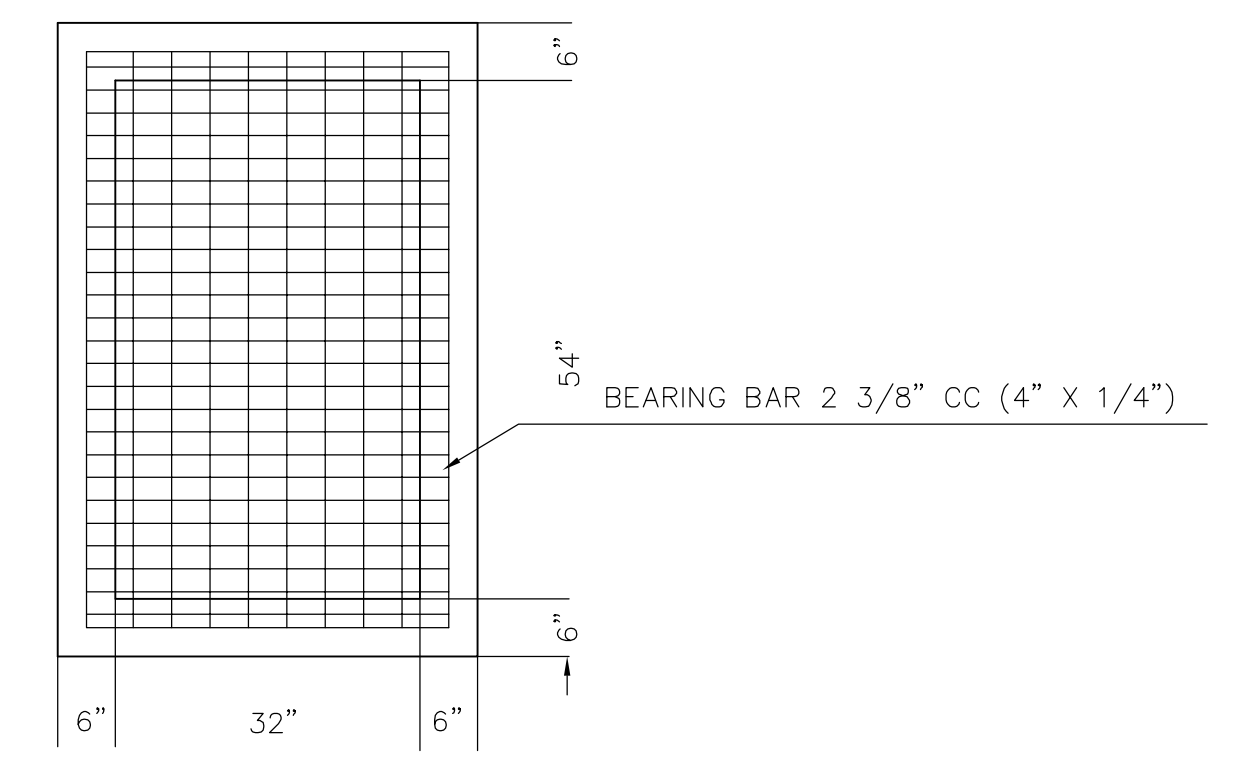
- NOTES:
- SELECT FILL CONSISTS OF EXCAVATED MATERIALS CONTAINING NO ROCKS LARGER THAN 2 INCHES.
 - BEDDING REQUIRED FOR ALL STORM SEWER REPLACEMENT PROJECTS, IN ROCK EXCAVATION, AND FOR LEVELING TRENCH IN NEW INSTALLATION.
 - COMPACTION REQUIREMENTS:
 - NON-PAVED AREAS: 90% MAXIMUM STANDARD PROCTOR DENSITY FOR COHESIONLESS SOILS AND 85% FOR COHESIVE SOILS.
 - PAVED AREAS: 95% MAXIMUM STANDARD PROCTOR DENSITY FOR COHESIONLESS SOILS.
 - FLOWABLE FILL MAY BE SUBSTITUTED FOR ALL MATERIALS IN ROAD CROSSING.

STORM SEWER PIPE BEDDING DETAIL

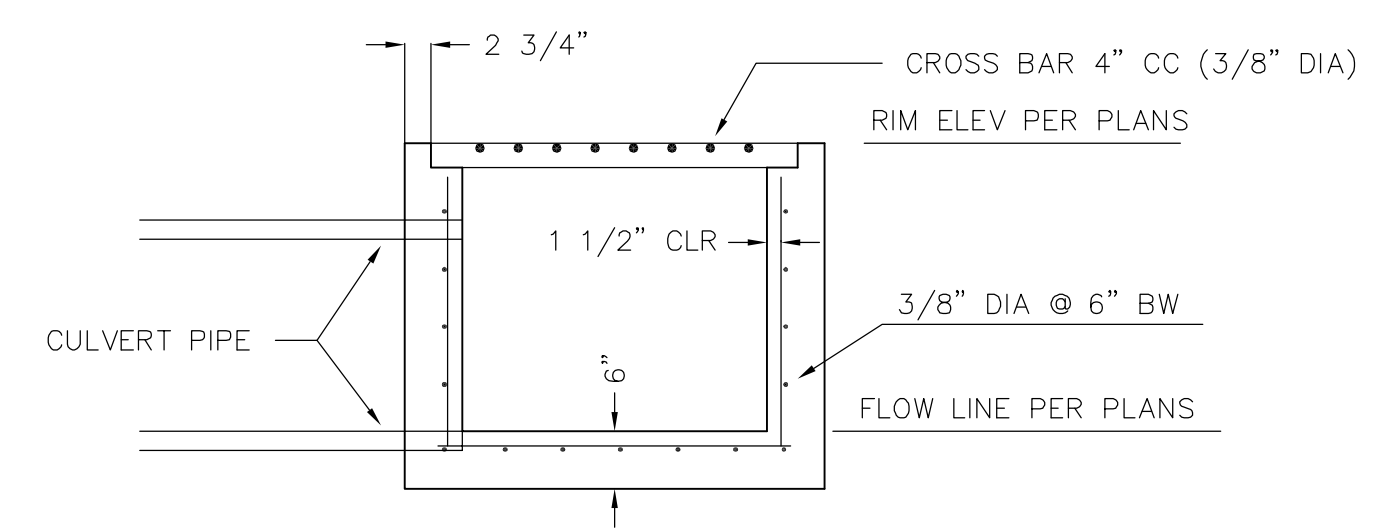


- NOTES:
- CONCRETE $f_c' = 3000$ PSI MINIMUM @ 28 DAYS, WITH 5% + 1% AIR ENTRAINMENT.
 - REINFORCING STEEL TO MEET ASTM A-615, #4 AND SMALLER GRADE 40, #5 AND LARGER GRADE 60.
 - FOR DISSIPATOR BLOCKS ADDED TO EXISTING SLOPEWALLS ALL REINFORCING STEEL DRILLED INTO EXISTING CONCRETE TO BE ANCHORED WITH HILTI C-100 ADHESIVE OR EQUAL.
 - SLOPEWALL AND HEADWALL TO BE CONSTRUCTED TO ODOT SPECIFICATIONS, * ON ROW 2, CUT #4 HORIZ. BARS OFF 3" FROM EACH SIDE OF DISSIPATOR WALL.

HEADWALL WITH DISSIPATOR DETAIL



INLET PLAN



INLET CROSS SECTION



AS-BUILT PLANS
CONTRACTOR : A. & F. EXCAVATING
INSPECTOR : TUTTLE & ASSOCIATES, INC.
JEFFREY A. TUTTLE
 .pdf by : J.T. 11-28-07

PROJECT NUMBER
 1764 PPS (OCA:607861)

STORM SEWER DETAILS	
WATERFORD APARTMENTS PHASE II	
CITY OF WICHITA, KANSAS	
PLANS & ESTIMATES PREPARED BY: TUTTLE & ASSOCIATES, INC.	9718 E. 55TH PL TULSA, OK. 74146 918-663-5567
REVISION	BY DATE
PLAN SCALE 1" = 50'	DESIGNED BY: DFILE: 4826STMDETAIL
PROFILE SCALE	RECOMMENDED:
HORIZONTAL	DEVELOPMENT SERVICES
VERTICAL	RECOMMENDED:
1" =	ENGINEERING SERVICES
FILE	DRAWING
ATLAS PAGE NO	DATE
	PUBLIC WORKS DIRECTOR
	DATE
	SHEET 7 OF 8 SHEETS