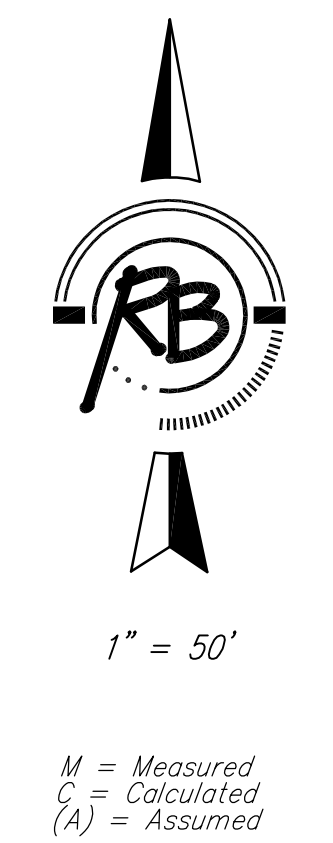
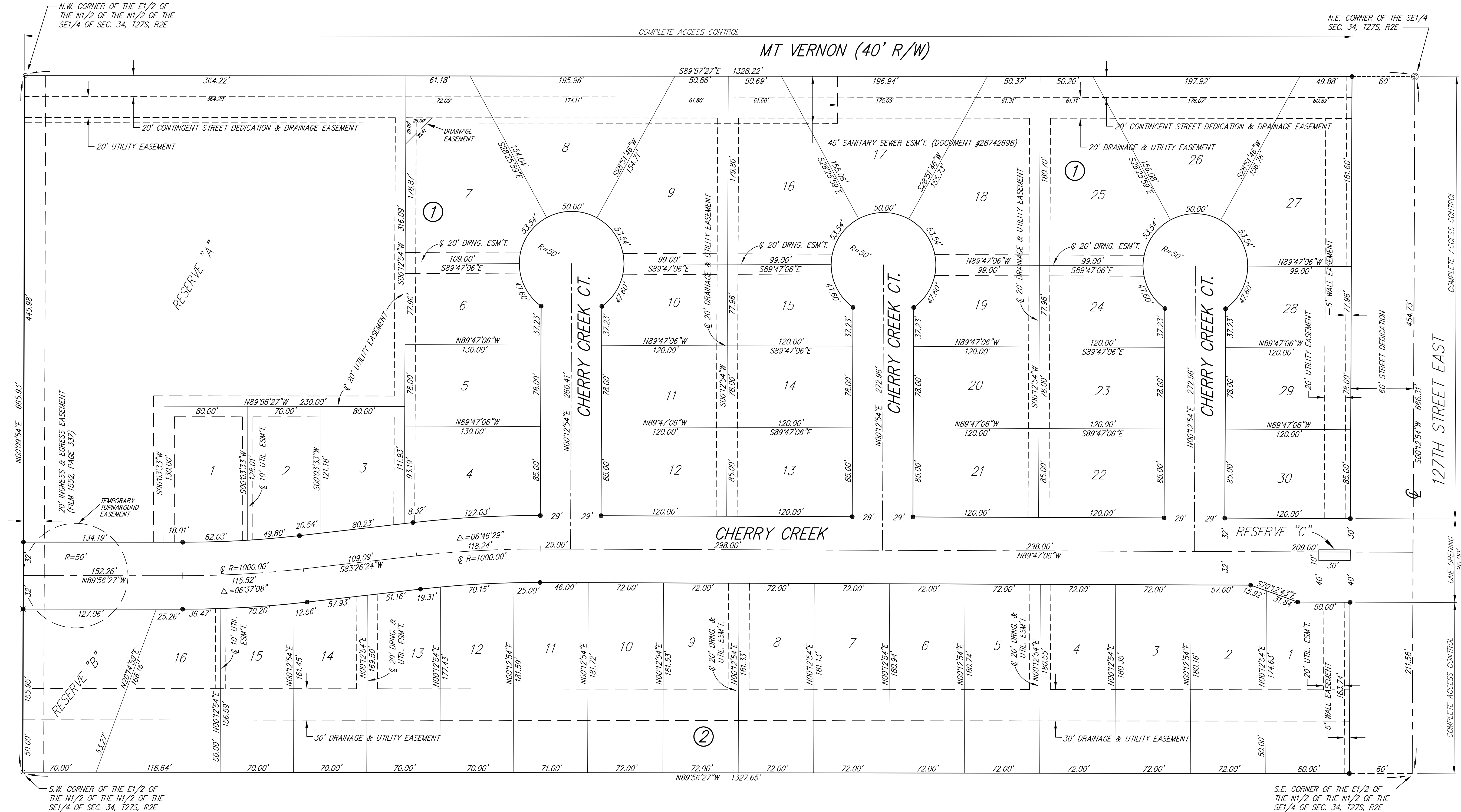


# TARA CREEK

## An Addition to Wichita, Sedgwick County, Kansas



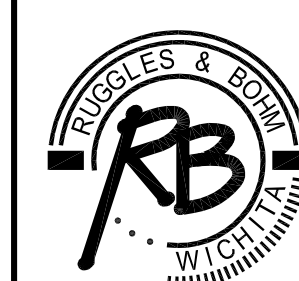
**SURVEY MARKER LEGEND**

- ⊠ = PK NAIL IN CONCRETE (FOUND)
- = 1/2" REBAR W/LAND MEASURE CAP (FOUND)
- ⊙ = 3/4" IRON PIPE (FOUND)
- ⊘ = 5/8" REBAR W/GARBER CAP (FOUND)
- ⊗ = 1" BAR (FOUND)
- ⊠ = 5/8" REBAR W/R&B CAP (FOUND FROM CASA BELLA ADDITION)
- = 5/8" REBAR W/R&B CAP (SET)

BENCH MARK: SRB BRASS DISC 55.45' E.  
& 5.13' S. OF THE N.W. COR., SW1/4, SEC. 35,  
T27S, R2E  
ELEV. = 1348.35 (N.G. V.D. 1929)

MINIMUM BUILDING PAD ELEVATION FOR LOWEST OPENING INTO STRUCTURES		
BLOCK	LOT NO.	ELEVATION (N.G. V.D. 1929)
1	1, 2, 3, 5, 6, 7,	1336.8

**TARA CREEK  
FINAL PLAT  
WICHITA, KANSAS**



**Ruggles & Bohm, F.A.**  
Engineering, Surveying, Land Planning

924 North Main  
Wichita, Kansas 67203  
www.rbkansas.com

(316) 264-8008  
(316) 264-4621 fax  
E-mail: info@rbkansas.com

DESIGN	CMB	DRAWN	RA	REVIEW	RA
UTILITY					
DRAWING FILE	PROJECT NUMBER	DATE			
Paving Details {plat}	472-84557	Nov. 20, 2007			
			SHEET	23	
			OF	23	