

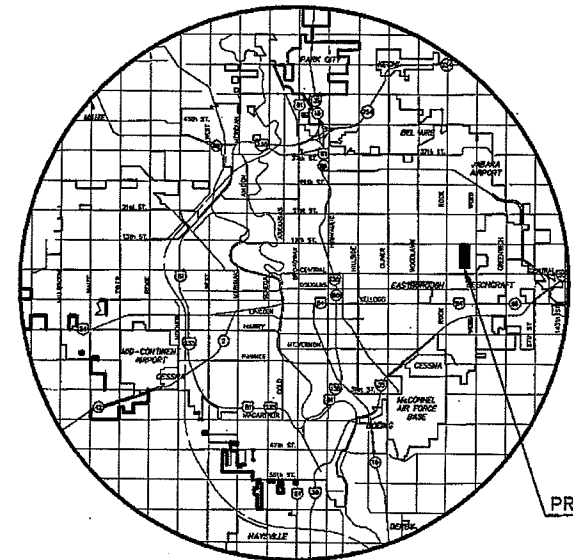
**WICHITA COUNTRY CLUB
 SECOND ADDITION
 PARKING LOT EXPANSION PLANS**

**STORM WATER
 LOCATION MAP
 & GEN. NOTES**
 SHEET TITLE
 07038
 PROJECT NUMBER

SRS
 DESIGN BY
 MKEC
 DRAWN BY
 MAB
 CHECKED BY

ISSUED
 Sept. 2007
 REVISED

SHEET NO.
 9 of 20



VICINITY MAP
 NO SCALE

GENERAL NOTES

- UNLESS SHOWN OR OTHERWISE STATED ON THESE DRAWINGS, MATERIALS AND CONSTRUCTION SHALL BE IN ACCORDANCE WITH THE CITY OF WICHITA STANDARD SPECIFICATIONS.
- THE TOPS OF INLETS AND MANHOLES AS NOTED ON THE PLANS MAY VARY SO AS TO MEET PROPOSED TOP OF CURB ELEVATIONS OR PAVEMENT ELEVATIONS. THE FIELD ENGINEER SHALL LOCATE INLETS AND MANHOLES WITH REFERENCE TO PROPOSED PAVING PLANS OF THE PERTINENT STREETS.
- ALL CONCRETE SHALL BE STANDARD PAVING MIX UNLESS OTHERWISE NOTED.
- THE CONTRACTOR SHALL BE RESPONSIBLE FOR PRESERVING PROPERTY IRONS. THE CONTRACTOR SHALL BE REQUIRED TO RE-ESTABLISH ANY PROPERTY IRONS WHICH ARE DAMAGED OR DESTROYED BY HIS CONSTRUCTION OPERATIONS. SUCH IRONS SHALL BE RE-ESTABLISHED BY A LICENSED LAND SURVEYOR IN ACCORDANCE WITH STATE LAWS.
- TREES TO BE REMOVED ARE MARKED . ALL TREES WHICH IN THE OPINION OF THE FIELD ENGINEER CAN BE SAVED, SHALL BE SAVED.
- CONTRACTOR SHALL NOTIFY UTILITY COMPANIES OF CONSTRUCTION SCHEDULING.
- EXISTING UTILITIES AND THEIR LOCATIONS, AS SHOWN ON THE PLANS REPRESENT THE BEST INFORMATION OBTAINABLE FOR DESIGN. LOCATION INFORMATION HAS BEEN OBTAINED FROM THE VARIOUS COMPANIES AND IS EITHER FROM COMPANY UTILITY DRAWINGS OR COMPANY PROVIDED FIELD LOCATIONS. THE PLAN LOCATIONS SHOWN ARE NOT GUARANTEED. ADDITIONAL EXISTING UTILITIES MAY ALSO BE ENCOUNTERED.
- CONTRACTOR WILL BE REQUIRED TO PROVIDE A MINIMUM ADVANCE NOTICE OF SEVENTY-TWO (72) HOURS TO UTILITY COMPANIES PRIOR TO STARTING ANY EXCAVATION AS FOLLOWS:
 KANSAS ONE-CALL 800-344-7233 OR 687-2470 (LOCAL WICHITA)
 THE CONTRACTOR MUST NOTIFY THE FOLLOWING IN CASE OF EMERGENCY:
 COX COMMUNICATIONS (CABLE) 262-0661
 WESTAR (ELECTRIC) 261-6512
 KANSAS GAS SERVICE (GAS) 832-3101
 SBC (TELEPHONE) 800-570-8390
 CITY OF WICHITA, WATER & SEWER 262-6000
 AQUILA (GAS) 946-0096
- RUBBLE FROM THE REMOVAL OF MISCELLANEOUS STRUCTURES AND EXCESS EXCAVATION WHICH IS TO BE WASTED SHALL BE DISPOSED OF ON SITES TO BE PROVIDED BY THE CONTRACTOR. THESE SITES SHALL BE APPROVED BY THE ENGINEER AS TO SUITABILITY, APPEARANCE AND SITE LOCATION. LOCATIONS THAT, IN THE OPINION OF THE ENGINEER, WILL LEAVE AN UNSIGHTLY APPEARANCE WILL NOT BE APPROVED. ALL DISPOSAL SITES MUST BE APPROVED BY THE KANSAS DEPARTMENT OF HEALTH AND ENVIRONMENT. MATERIAL EITHER STOCKPILED OR DISPOSED OF IN A FLOOD PLAIN WOULD REQUIRE A KANSAS STATE BOARD OF AGRICULTURE PERMIT. ANY MATERIAL DUMPED IN WATERS OF THE UNITED STATES OR WETLANDS IS SUBJECT TO U.S. CORPS OF ENGINEERS PERMITTING REGULATIONS. ANY MATERIAL BURIED OR STOCKPILED BEYOND APPROVED CONSTRUCTION LIMITS WOULD REQUIRE ADDITIONAL ARCHAEOLOGICAL INVESTIGATIONS UNLESS BURIED IN A PREVIOUSLY APPROVED BORROW LOCATION.
- CONTRACTOR SHALL RESEED AND MULCH ALL DISTURBED AREAS NOT REQUIRED TO BE SODDED. COST SHALL BE CONSIDERED SUBSIDIARY TO SITE RESTORATION.

PLAT IRONS			
Point #	Northing	Easting	Desc.
101	1694292.23	1677637.22	PI
102	1691682.11	1677685.98	PI
103	1691692.36	1678385.91	PI
104	1694300.35	1678337.19	PI

NOTE:
 ALL LINES TO BE INSTALLED BY OTHERS ARE SUBJECT TO D.C.I. REVIEW.

NOTE:
 CONTRACTOR TO VERIFY LOCATION AND ELEVATION OF EXIST. UTILITIES PRIOR TO CONSTRUCTION.

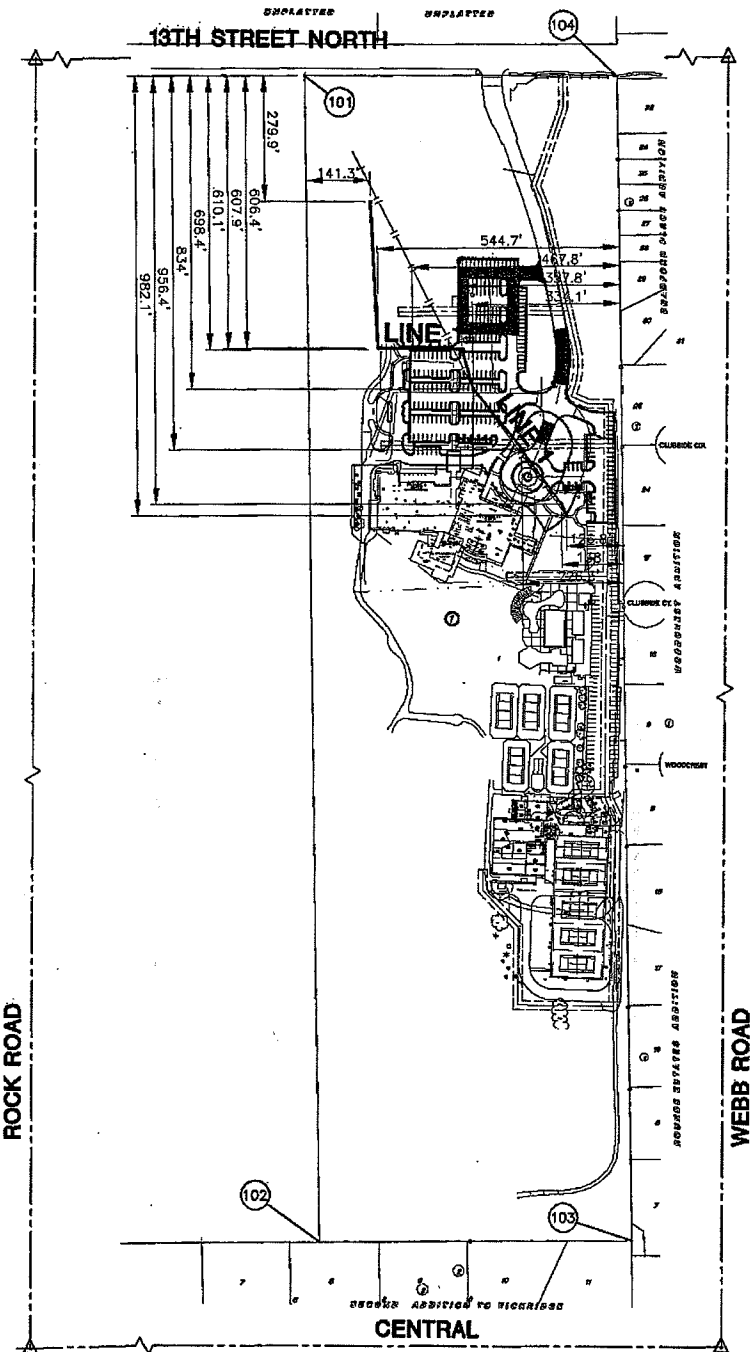
**PRIVATE SWS
 TO SERVE
 WICHITA COUNTRY CLUB
 2ND ADDITION
 CITY OF WICHITA
 PRIVATE PROJECT
 NO. 1818PPS (607861)
 AS BUILT - NOVEMBER 2007**

APPROVED AS NOTED
 BY CITY ENGINEER OF WICHITA

STORM SEWERS *VRH 9/19/07*

NOTE TO CONTRACTOR

INSPECTION AND TESTING FOR THIS PROJECT IS TO BE PROVIDED BY A LICENSED CONSULTING ENGINEERING FIRM UNDER CONTRACT WITH THE OWNER/DEVELOPER. SAID INSPECTION TO BE IN ACCORDANCE WITH THE CITY OF WICHITA STANDARD CONSTRUCTION ENGINEERING PRACTICES AND CERTIFIED BY A LICENSED PROFESSIONAL ENGINEER. NO WORK SHALL BE PERFORMED IN DEDICATED EASEMENTS OR THE PUBLIC RIGHT-OF-WAY BY THE CONTRACTOR WITHOUT SUCH INSPECTION NOR SHALL ANY WORK BE COMMENCED IN DEDICATED EASEMENTS OR PUBLIC RIGHT-OF-WAY WITHOUT WRITTEN AUTHORIZATION BY THE CITY ENGINEER.



LOCATION MAP
 NO SCALE

BENCHMARKS

BM#1 CHISELED SQUARE ON TOP OF WEST CURB AT SOUTH END OF DRIVE INTO WICHITA COUNTRY CLUB AT OPENING INTO PARKING LOT.
 ELEV. = 193.90 (C.O.W. DATUM)
 ELEV. = 1381.30 (NGVD 29)

AS BUILT PLANS
 Contractor: WILDCAT Construction
 INSPECTOR: Roy Griffin
MKEC Engineering
 .pdf by Sheena Bruner
MKEC Engineering