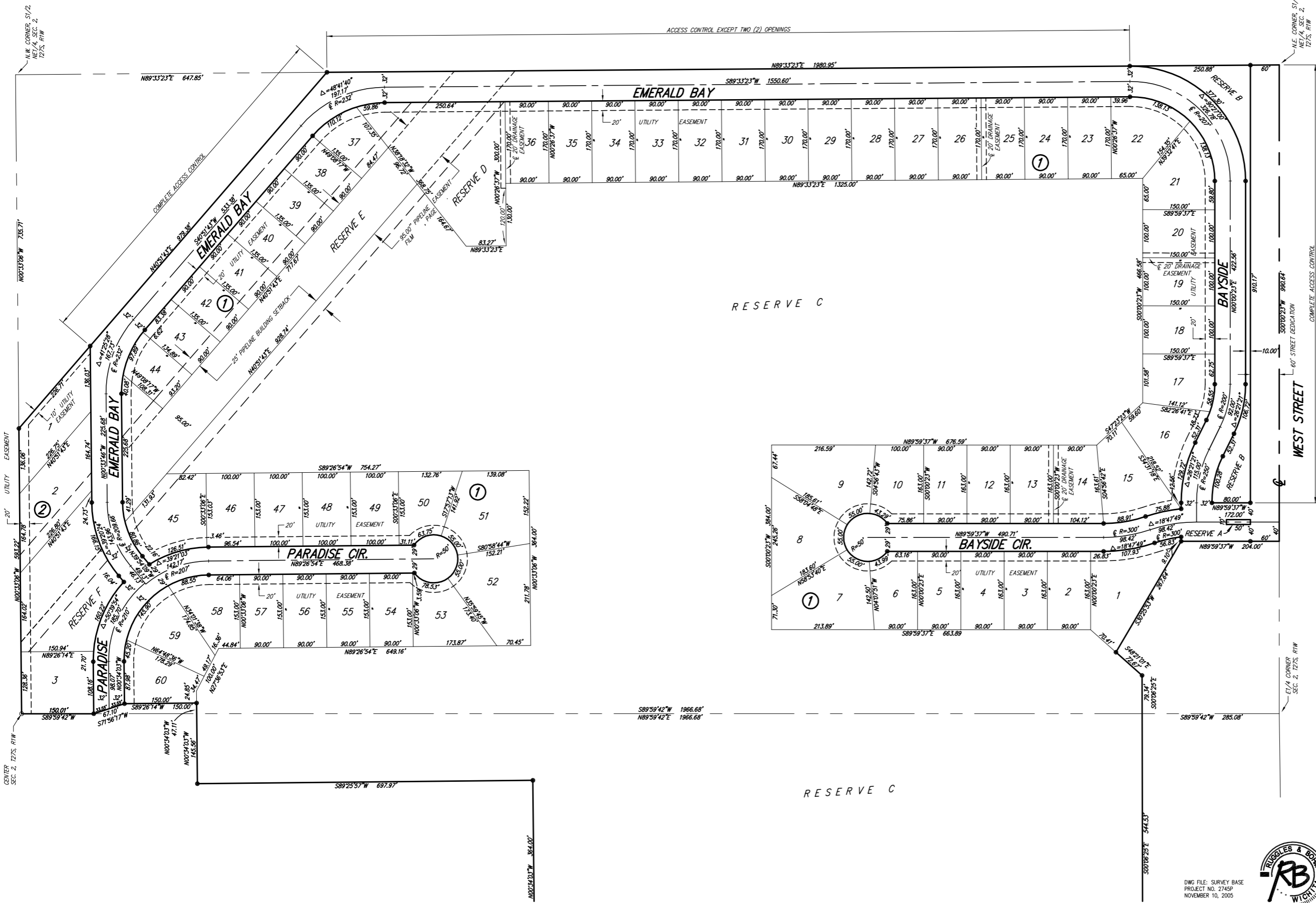


# EMERALD BAY ESTATES

Wichita, Sedgwick County, Kansas



1" = 100'

SETBACK LINES PER ZONING REGULATIONS

M = Measured  
C = Calculated  
A = Assumed

SURVEY MARKER LEGEND

- ..... 1/2" IRON PIPE
- ⊠ ..... RAILROAD SPIKE
- ⊞ ..... 5"x5" CONCRETE MONUMENT WITH A 5/8" REBAR
- ..... 5/8" REBAR W/RUGGLES & BOHM CAP (SET)

BENCH MARK: CITY OF WICHITA BRASS DISK ON THE NORTHWEST CORNER OF A R.C.B.C. 0.75 MILES EAST OF HOOVER ON 21ST ST. NORTH ELEV = 1321.62 M.S.L.

BENCH MARK: CITY OF WICHITA BRASS DISK TOP OF HEADWALL OF R.C.B.C UNDER WEST STREET, NORTH OF 29TH ST. NORTH ON EAST SIDE OF WEST ST. ELEV = 1321.80 M.S.L.

BENCH MARK: CITY OF WICHITA BRASS DISK AT THE NORTHWEST CORNER OF HOOVER AND 21ST ST. NORTH ELEV = 1326.47 M.S.L.

BENCH MARK: CITY OF WICHITA BRASS DISK AT THE SOUTHWEST CORNER OF HOOVER AND 29TH ST. NORTH ELEV = 1330.16 M.S.L.

SHEET 17 OF 17

**Ruggles & Bohm, P.A.**  
Engineering, Surveying, Land Planning



DWG FILE: SURVEY BASE  
PROJECT NO. 2745P  
NOVEMBER 10, 2005

924 North Main (316) 264-8008  
Wichita, Kansas 67203 (316) 264-4621 fax  
www.rbkansas.com E-mail: info@rbkansas.com