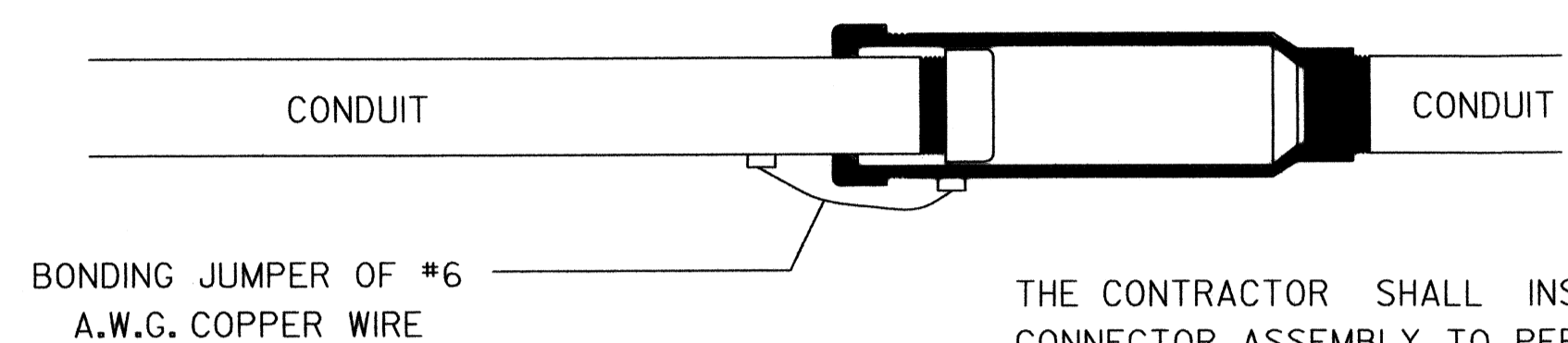
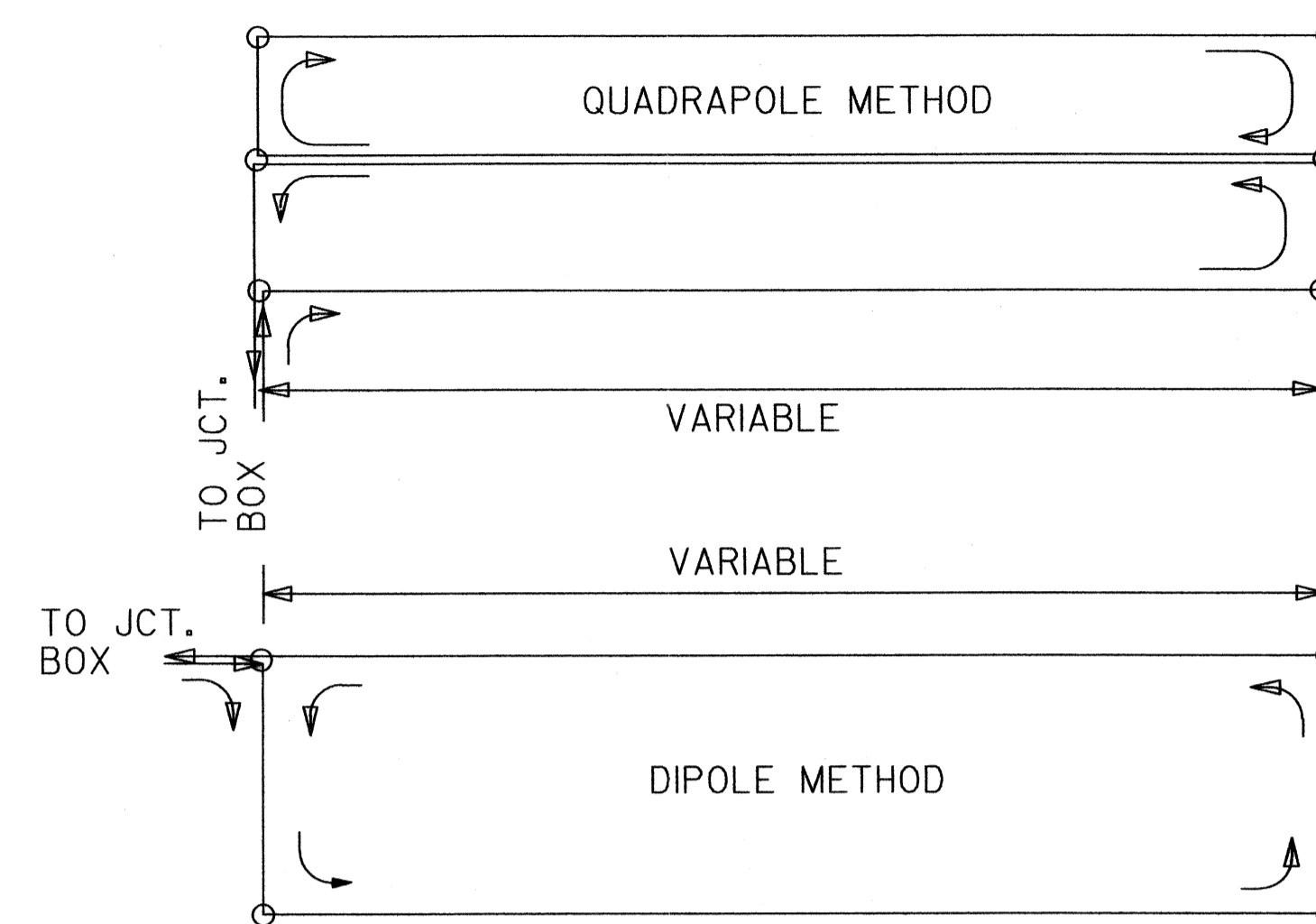


FHWA REGION NO.	STATE	PROJECT NO.	YEAR	SHEET NO.	TOTAL SHEETS
7	KANSAS			T13	



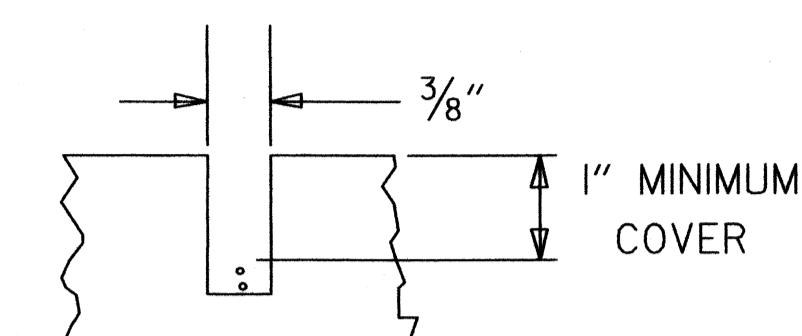
THE CONTRACTOR SHALL INSTALL THE CONDUIT AND CONNECTOR ASSEMBLY TO PERMIT A 1" MINIMUM LONGITUDINAL TRAVEL IN EITHER DIRECTION.

EXPANSION FITTING

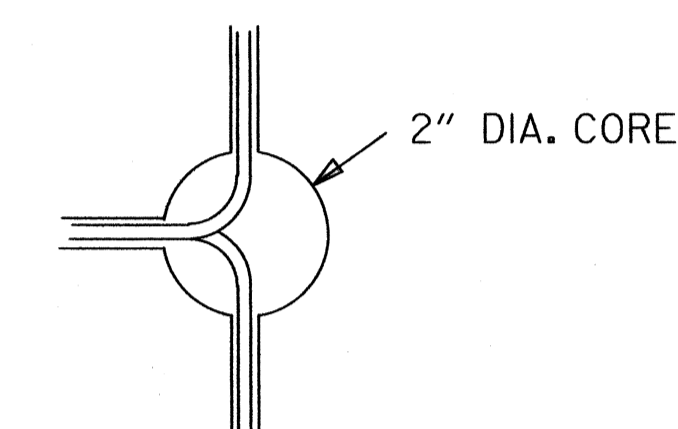


ALL LOOPS TO BE WOUND IN SAME DIRECTION WITH START AND END CLEARLY MARKED AT JUNCTION OR SERVICE BOX

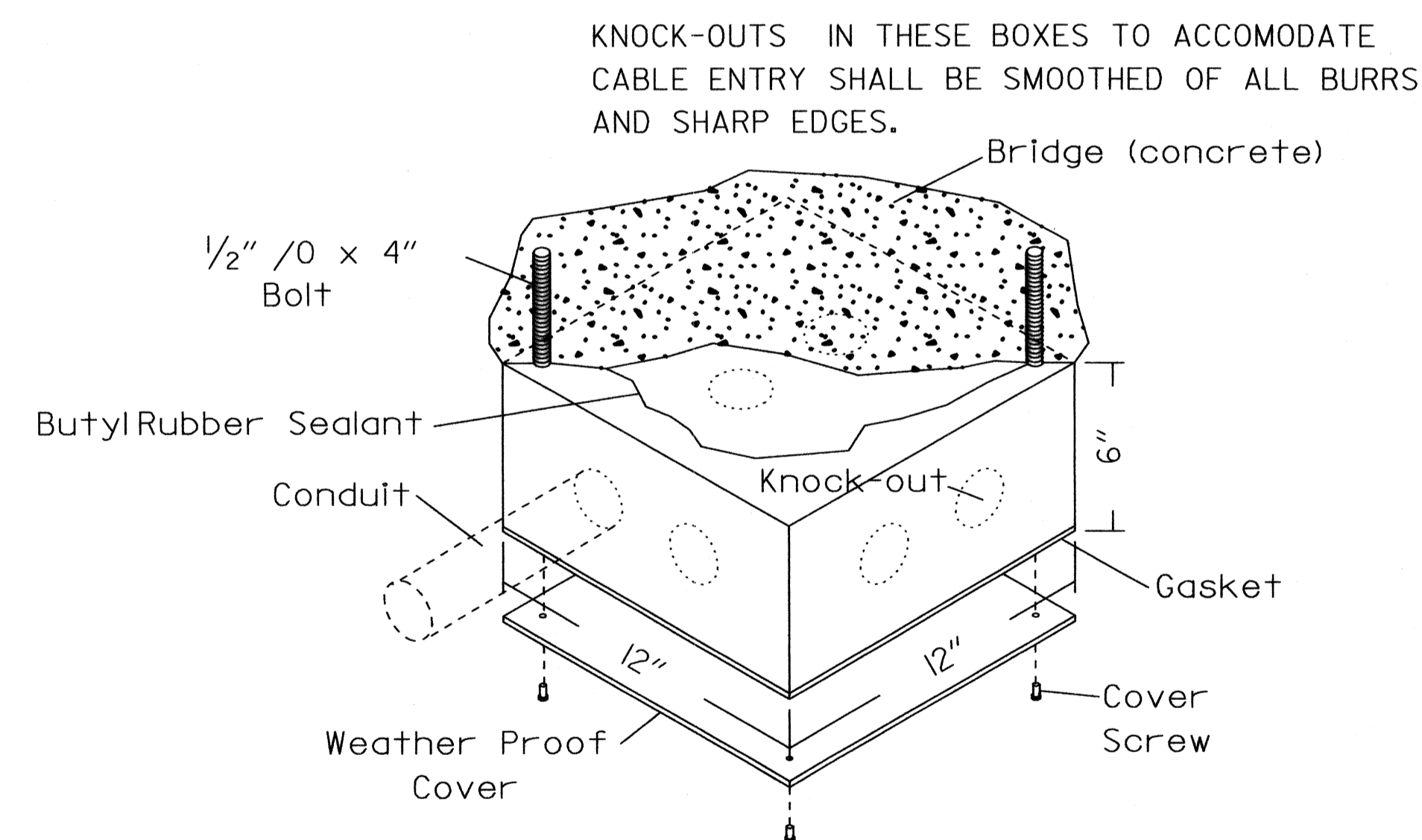
LOOP DETECTOR DETAILS



SLOT DETAIL

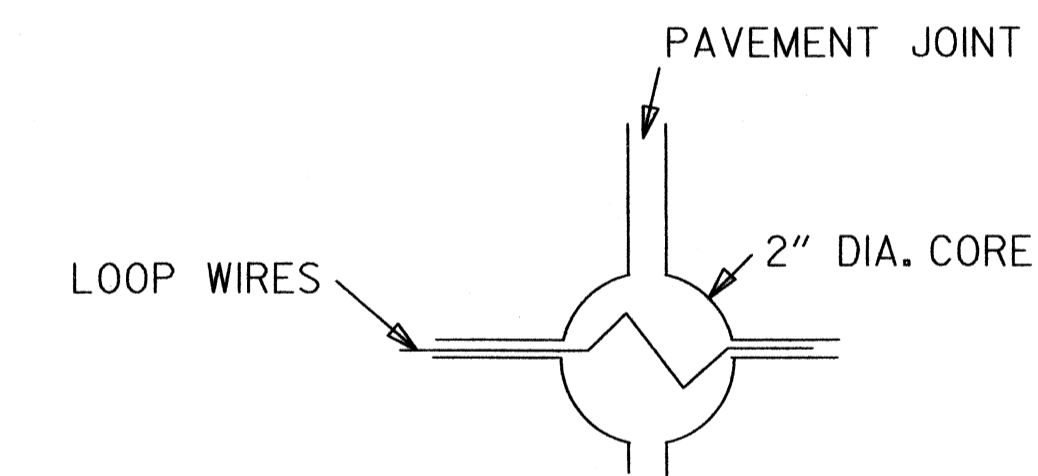


LOOP CORNER DETAIL

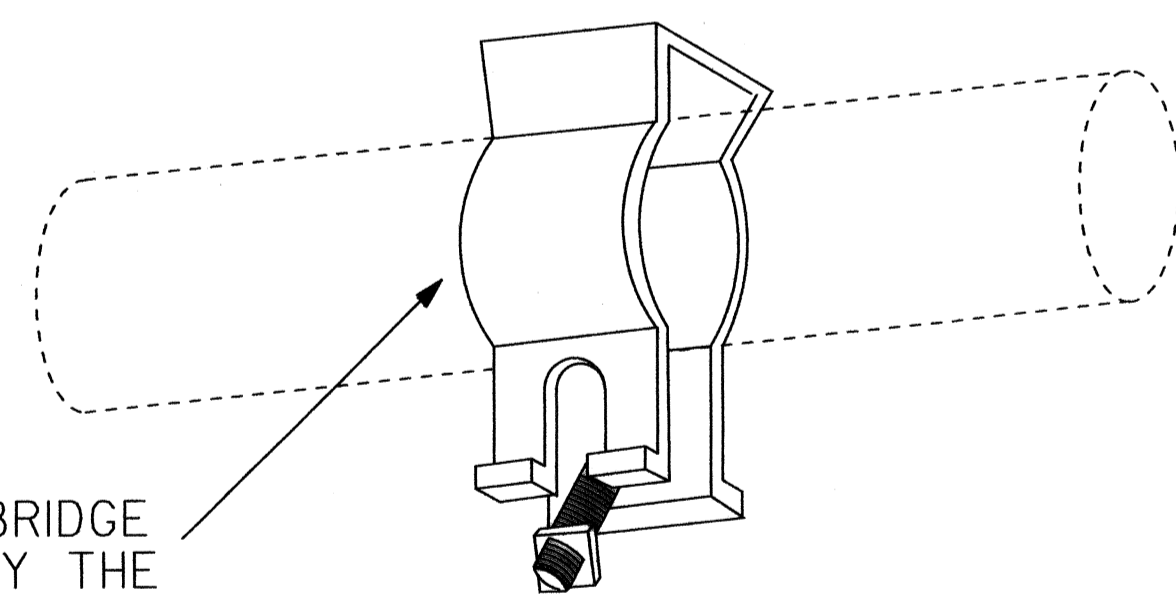


THE JUNCTION BOX IS TO BE ATTACHED TO THE BRIDGE. THE CONTRACTOR SHALL DRILL TWO HOLES IN THE BOTTOM OF THE BOX AND BOLT THE JUNCTION BOX TO THE BRIDGE AT THE INSERTS PROVIDED. BOLTS SHALL BE 1/2" / 0 BY 4" LONG AND SHALL CONFORM TO ASTM A325. A WASHER SHALL BE INSTALLED BETWEEN THE BOLT HEAD AND BOTTOM OF THE BOX.

ABOVE GROUND JUNCTION BOX



LOOP PAVEMENT JOINT DETAIL



FASTEN TO BOTTOM OF BRIDGE DECK AS RECOMMENDED BY THE MANUFACTURER.

CONDUIT HANGER

Plotted By : \$USERNAME\$
 Plot File : \$\$\$\$DONSPEC\$\$\$\$
 Plot Date : \$\$\$\$SYTIME\$\$\$\$

3				
2				
1				
NO.	DATE		BY	APP'D
KANSAS DEPARTMENT OF TRANSPORTATION				
TRAFFIC SIGNAL INSTALLATION DETAIL SHEET				
TEH2				03/26/03
FHWA APPROVAL	04/29/03	APP'D	Linda G. Voss, P.E.	
DESIGNED	J.F.F.	DETAILED	J.F.F.	QUANTITIES
DESIGN CK.	G.J.O.	DETAIL CK.	G.J.O.	QUAN. CK.
				TRACE CK.