

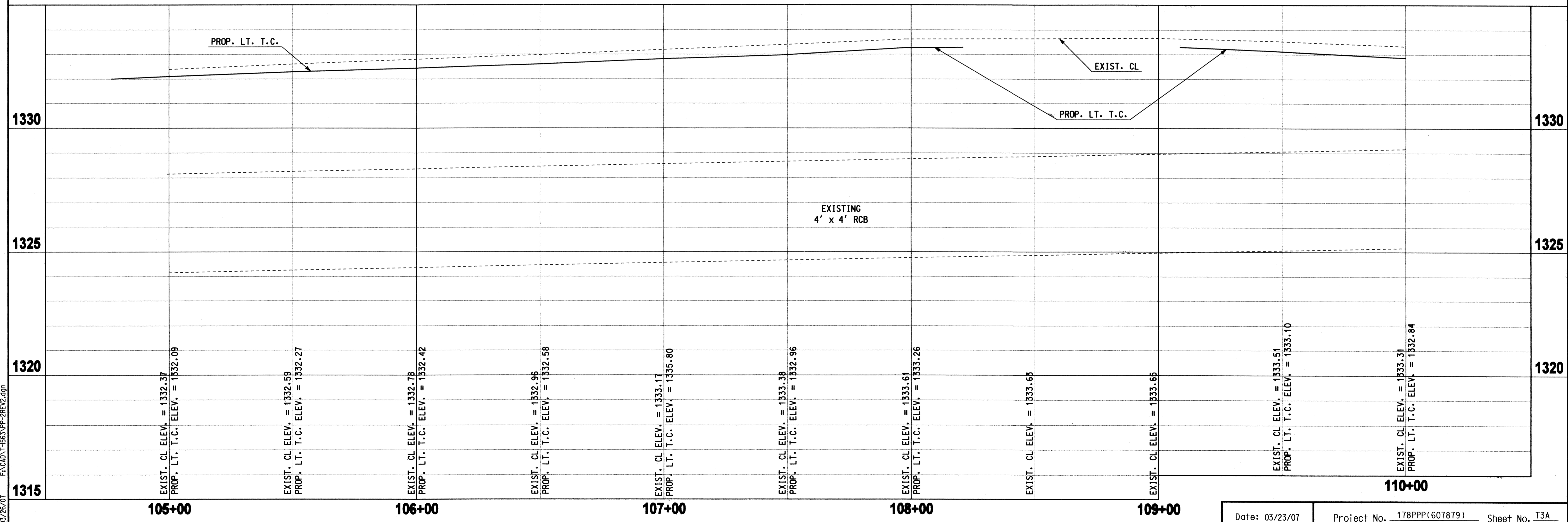
- CONCRETE
- ASPHALT PAVEMENT
- PAVEMENT REMOVAL

TEC ENGINEERING CONSULTANTS
 Traffic Engineering
 6800 S. Western, Suite 300 - Oklahoma City, OK 73139, Ph: 406-720-7721, Fax: 406-720-9648, Web: www.tecokc.com

Todd E. Butler
 TODD E. BUTLER, P.E. # 18710
 C.A. # E-1150, RENEWAL 12-31

3-26-07
 DATE

Professional Engineer Seal: TODD EMORY BUTLER, LICENSED PROFESSIONAL ENGINEER, 18710, KANSAS



03/26/07 FAX: 406-720-9648