

FHWA REGION NO.	STATE	PROJECT NO.	YEAR	SHEET NO.	TOTAL SHEETS
7	KANSAS	54-87 K-6657-01	2002	68	1122

DATE	
BY	
REFERENCES NOTED	
REFERENCES CHECKED	

Scale: 1:500

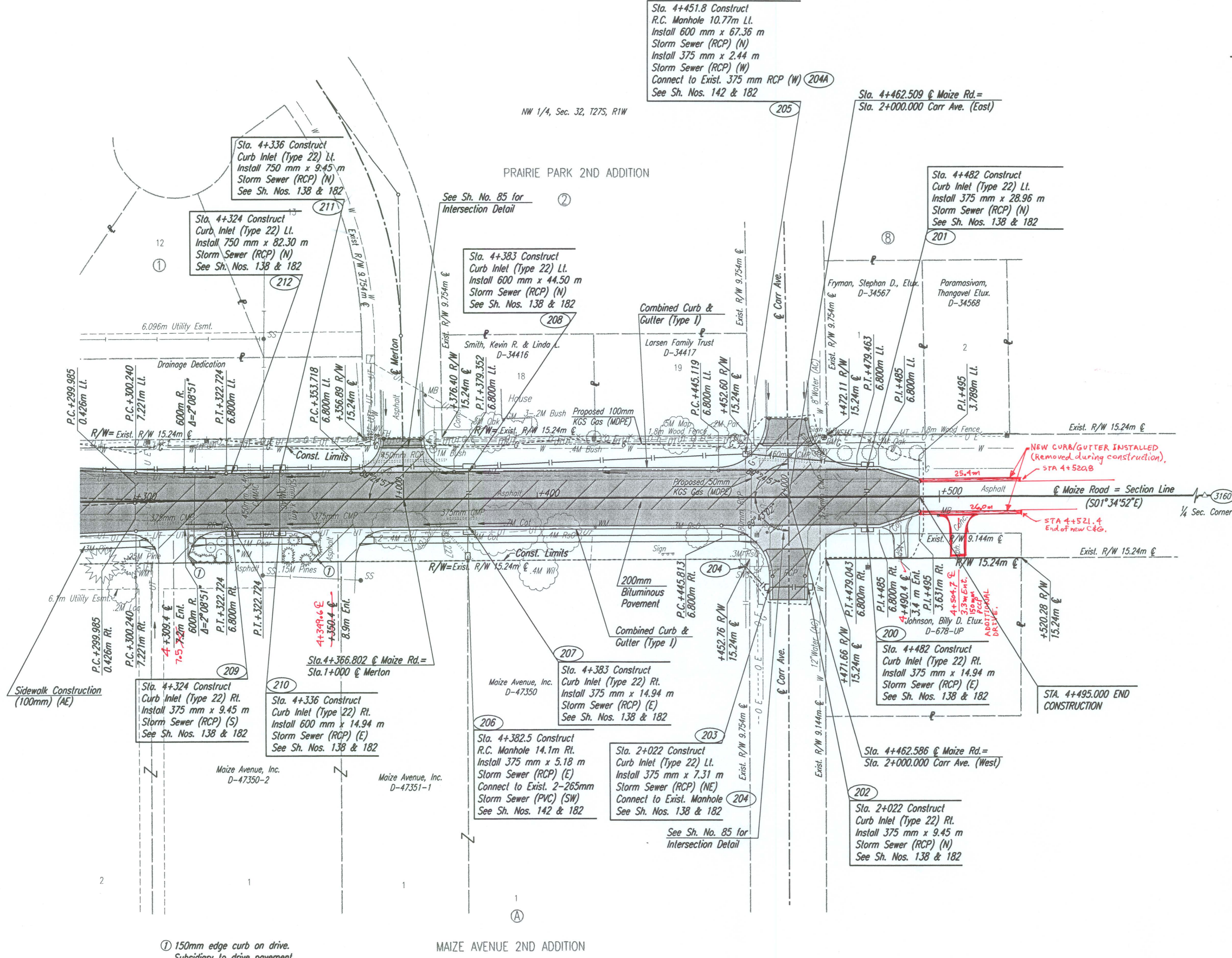
Sta. 4+451.8 Construct R.C. Manhole 10.77m Lt. Install 600 mm x 67.36 m Storm Sewer (RCP) (N) Install 375 mm x 2.44 m Storm Sewer (RCP) (W) Connect to Exist. 375 mm RCP (W) 204A See Sh. Nos. 142 & 182

Sta. 4+462.509 @ Maize Rd. = Sta. 2+000.000 Carr Ave. (East)

Sta. 4+482 Construct Curb Inlet (Type 22) Lt. Install 375 mm x 28.96 m Storm Sewer (RCP) (N) See Sh. Nos. 138 & 182

Removal of Existing Structures	
4+309.5, 5.1m Rt., 375mm x 9.2m CMP	
4+328.4, @ 0.4 sq. m x 13.9m CMMAC	
4+338.4, @ 0.4 sq. m x 13.9m CMMAC	
4+366.8, 9.5m Lt., 450mm x 20.8m RCP	
4+375.4, 6.5m Rt., Headwall & 10.5m± PVC Pipe	
4+381.2, 4.5m Rt., 375mm x 7.4m CMP	
4+462.5, 9.0m Lt., 450mm x 15.4m CMP	
4+462.6, 17.0m Rt., 12" x 8.8m RCP & 2 Curb Inlets	
4+472, @ 375mm x 12.6 m CMP	

POINT NO.	NORTH COORDINATE	EAST COORDINATE
3160	510531.581	491636.486



① 150mm edge curb on drive. Subsidiary to drive pavement.

- UTILITIES
 Power - K G E
 Telephone - Southwestern Bell
 Gas - Kansas Gas Service
 Cable TV - Cox Communications
 Water - City of Wichita Water Dept.
 San. Sewer - City of Wichita Sewer Dept.

- W 1/4 Cor. Sec. 32, T27S, R1W (3160)
 @ Maize Road Sta. 4+854.867
 1. Found 1/2" IP in thimble ctr. Maize Road
 2. PK nail E face 20' hedge trees
 3. 3 nails W face power pole
 4. Chis. *+ N end E headwall RCBC
 5. Chis. *+ N end W headwall RCBC

BM #A-RR Spike in NW face Light Pole at SE Cor. Maize Road & Carr Street Elev. 404.199 m ELEV. 1326.110 Ft

DSNR: WDH OPER: JGP SCALE: 1:500
 I: 1/1997/97362/MAIZE RD/PL4300.DGN 11-24-1999 13:51:20 LAST REV: 2-1-2002 BY: svb

No.	Revisions	By	Date
CITY OF WICHITA			
MAIZE ROAD STA. 4+300 TO STA. 4+495			
SEDGWICK COUNTY			
Professional Engineering Consultants, P.A. 303 S. TOPEKA • WICHITA, KANSAS 67202 316-262-2691 • FAX 316-262-3003			
Designed by	RCH	Checked by	WDH
Drawn by	JGP	Date	April, 2002
		Job No.	97362