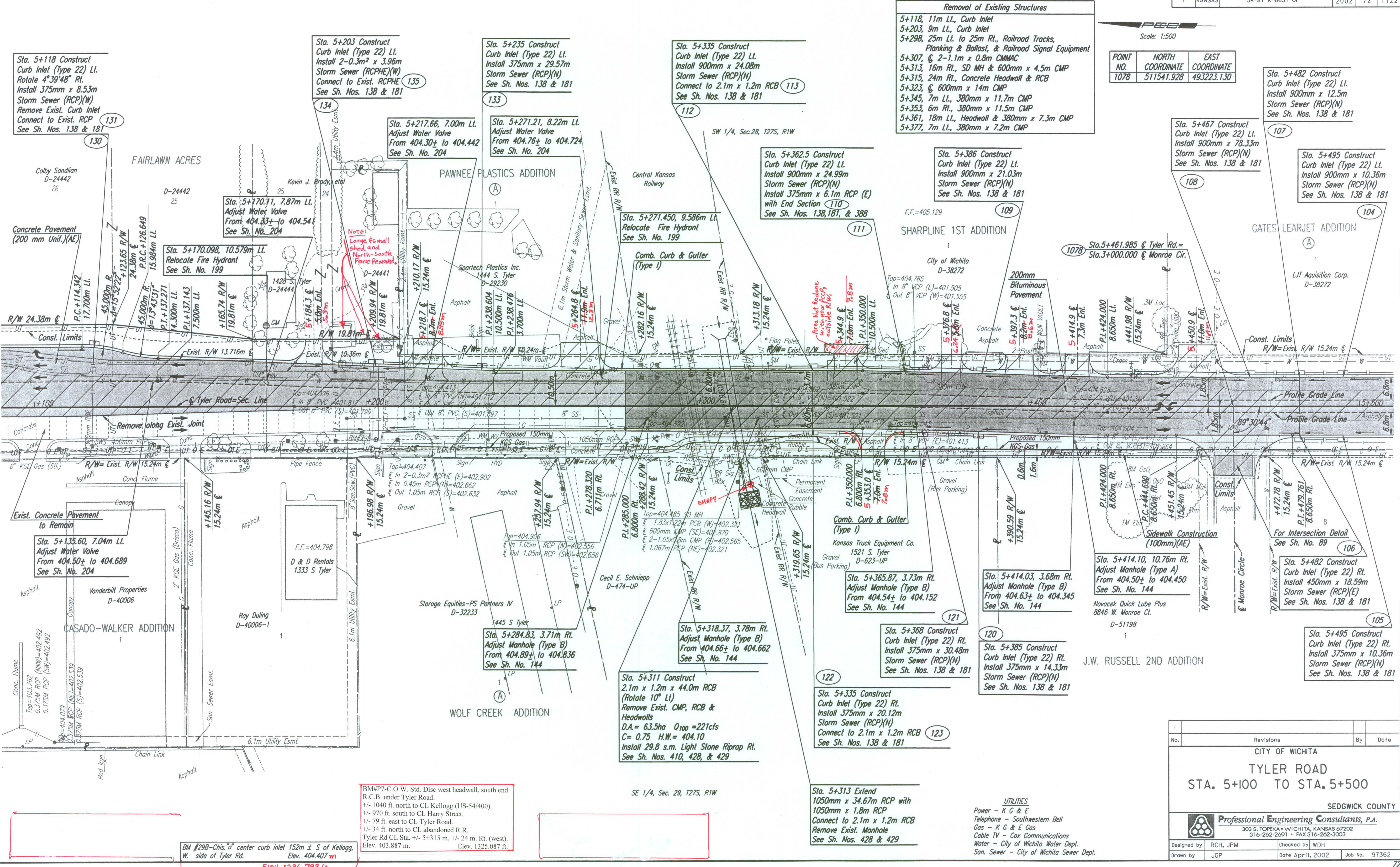


FHWA REGION NO.	STATE	PROJECT NO.	YEAR	SHEET NO.	TOTAL SHEETS
7	KANSAS	54-87 K-6657-01	2002	72	1122

Scale: 1:500

POINT NO.	NORTH COORDINATE	EAST COORDINATE
1078	511541.928	493223.130

BY	DATE
REFERENCES NOTED	REFERENCES CHECKED



Removal of Existing Structures

5+118, 11m Lt., Curb Inlet
 5+203, 9m Lt., Curb Inlet
 5+298, 25m Lt. to 25m Rt., Railroad Tracks, Planking & Ballast, & Railroad Signal Equipment
 5+307, 2-1.1m x 0.8m CMMAC
 5+313, 16m Rt., SD MH & 600mm x 4.5m CMP
 5+315, 24m Rt., Concrete Headwall & RCB
 5+323, 600mm x 14m CMP
 5+345, 7m Lt., 380mm x 11.7m CMP
 5+353, 6m Rt., 380mm x 11.5m CMP
 5+361, 18m Lt., Headwall & 380mm x 7.3m CMP
 5+377, 7m Lt., 380mm x 7.2m CMP

Sta. 5+467 Construct Curb Inlet (Type 22) Lt. Install 900mm x 78.33m Storm Sewer (RCP)(N) See Sh. Nos. 138 & 181

Sta. 5+495 Construct Curb Inlet (Type 22) Lt. Install 900mm x 10.36m Storm Sewer (RCP)(N) See Sh. Nos. 138 & 181

Sta. 5+118 Construct Curb Inlet (Type 22) Lt. Rotate 4°39'48" Rt. Install 375mm x 8.53m Storm Sewer (RCP)(W) Remove Exist. Curb Inlet Connect to Exist. RCP See Sh. Nos. 138 & 181

Sta. 5+203 Construct Curb Inlet (Type 22) Lt. Install 2-0.3m x 3.96m Storm Sewer (RCP)(W) Connect to Exist. RCP See Sh. Nos. 138 & 181

Sta. 5+235 Construct Curb Inlet (Type 22) Lt. Install 375mm x 29.57m Storm Sewer (RCP)(N) See Sh. Nos. 138 & 181

Sta. 5+335 Construct Curb Inlet (Type 22) Lt. Install 900mm x 24.08m Storm Sewer (RCP)(N) Connect to 2.1m x 1.2m RCB See Sh. Nos. 138 & 181

Sta. 5+217.66, 7.00m Lt. Adjust Water Valve From 404.30± to 404.442 See Sh. No. 204

Sta. 5+271.21, 8.22m Lt. Adjust Water Valve From 404.76± to 404.724 See Sh. No. 204

Sta. 5+362.5 Construct Curb Inlet (Type 22) Lt. Install 900mm x 24.99m Storm Sewer (RCP)(N) Install 375mm x 6.1m RCP (E) with End Section See Sh. Nos. 138, 181, & 388

Sta. 5+386 Construct Curb Inlet (Type 22) Lt. Install 900mm x 21.03m Storm Sewer (RCP)(N) See Sh. Nos. 138 & 181

Sta. 5+461.985 & Tyler Rd. = Sta. 3+000.000 @ Monroe Cir.

Concrete Pavement (200 mm Unit.) (AE)

Sta. 5+170.91, 7.87m Lt. Adjust Water Valve From 404.33± to 404.54± See Sh. No. 204

NOTE: Large f's small shed and North-South Fence Removal.

Sta. 5+170.98, 10.579m Lt. Relocate Fire Hydrant See Sh. No. 199

Sta. 5+271.450, 9.586m Lt. Relocate Fire Hydrant See Sh. No. 199

SHARPLINE 1ST ADDITION

Const. Limits

Remove along Exist. Joint

Sta. 5+135.60, 7.04m Lt. Adjust Water Valve From 404.50± to 404.689 See Sh. No. 204

Sta. 5+284.83, 3.71m Rt. Adjust Manhole (Type B) From 404.89± to 404.836 See Sh. No. 144

Sta. 5+318.37, 3.78m Rt. Adjust Manhole (Type B) From 404.66± to 404.662 See Sh. No. 144

Comb. Curb & Gutter (Type I)

Sta. 5+365.87, 3.73m Rt. Adjust Manhole (Type B) From 404.54± to 404.152 See Sh. No. 144

Sta. 5+414.03, 3.68m Rt. Adjust Manhole (Type B) From 404.63± to 404.345 See Sh. No. 144

Exist. Concrete Pavement to Remain

CASADO-WALKER ADDITION

Ray Duling D-40006-1

WOLF CREEK ADDITION

Sta. 5+311 Construct 2.1m x 1.2m x 44.0m RCB (Rotate 10° Lt) Remove Exist. CMP, RCB & Headwalls D.A. = 63.5ha Q100 = 221cfs C = 0.75 H.W. = 404.10 Install 29.8 s.m. Light Stone Riprap Rt. See Sh. Nos. 410, 428, & 429

Sta. 5+335 Construct Curb Inlet (Type 22) Rt. Install 375mm x 20.12m Storm Sewer (RCP)(N) Connect to 2.1m x 1.2m RCB See Sh. Nos. 138 & 181

Sta. 5+385 Construct Curb Inlet (Type 22) Rt. Install 375mm x 14.33m Storm Sewer (RCP)(N) See Sh. Nos. 138 & 181

Exist. Concrete Pavement to Remain

CASADO-WALKER ADDITION

Ray Duling D-40006-1

WOLF CREEK ADDITION

Sta. 5+311 Construct 2.1m x 1.2m x 44.0m RCB (Rotate 10° Lt) Remove Exist. CMP, RCB & Headwalls D.A. = 63.5ha Q100 = 221cfs C = 0.75 H.W. = 404.10 Install 29.8 s.m. Light Stone Riprap Rt. See Sh. Nos. 410, 428, & 429

Sta. 5+335 Construct Curb Inlet (Type 22) Rt. Install 375mm x 20.12m Storm Sewer (RCP)(N) Connect to 2.1m x 1.2m RCB See Sh. Nos. 138 & 181

Sta. 5+385 Construct Curb Inlet (Type 22) Rt. Install 375mm x 14.33m Storm Sewer (RCP)(N) See Sh. Nos. 138 & 181

BM #29B-Chis. "a" center curb inlet 152m ± S of Kellogg, W. side of Tyler Rd. Elev. 404.407 m
 Elev. 1326.792 ft

BM#P7-C.O.W. Std. Disc headwall, south end R.C.B. under Tyler Road. +/- 1040 ft. north to CL Kellogg (US-54/400). +/- 970 ft. south to CL Harry Street. +/- 79 ft. east to CL Tyler Road. +/- 34 ft. north to CL abandoned R.R. Tyler Rd CL Sta. +/- 5+315 m, +/- 24 m. Rt. (west). Elev. 403.887 m. Elev. 1325.087 ft.

SE 1/4, Sec. 29, T27S, R1W

Sta. 5+313 Extend 1050mm x 34.67m RCP with 1050mm x 1.8m RCP Connect to 2.1m x 1.2m RCB Remove Exist. Manhole See Sh. Nos. 428 & 429

UTILITIES
 Power - K G & E
 Telephone - Southwestern Bell
 Gas - K G & E Gas
 Cable TV - Cox Communications
 Water - City of Wichita Water Dept.
 San. Sewer - City of Wichita Sewer Dept.

No.	Revisions	By	Date

CITY OF WICHITA

TYLER ROAD
 STA. 5+100 TO STA. 5+500

SEDGWICK COUNTY

Professional Engineering Consultants, P.A.
 303 S. TOPICKA • WICHITA, KANSAS 67202
 316-262-2691 • FAX 316-262-3003

Designed by RCH, JPM Checked by WDH
 Drawn by JGP Date Apr 11, 2002 Job No. 97362

DSNR: RCH OPER: JGP SCALE: 1:500
 1/1997/97362/TYLER RD/PL5100.DGN 10-27-1999 13:35:03 LAST REV: 2-1-2002 BY: svb