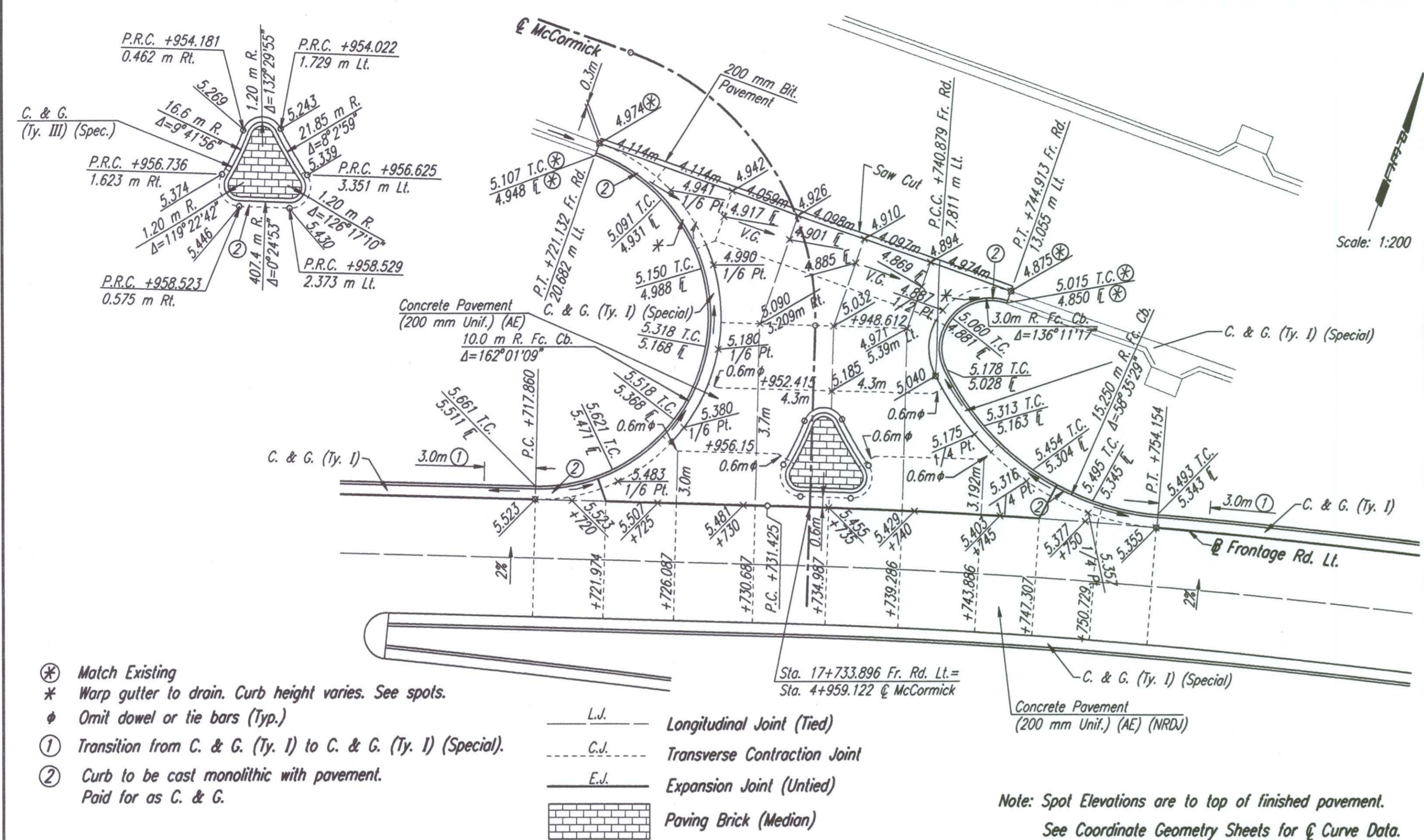


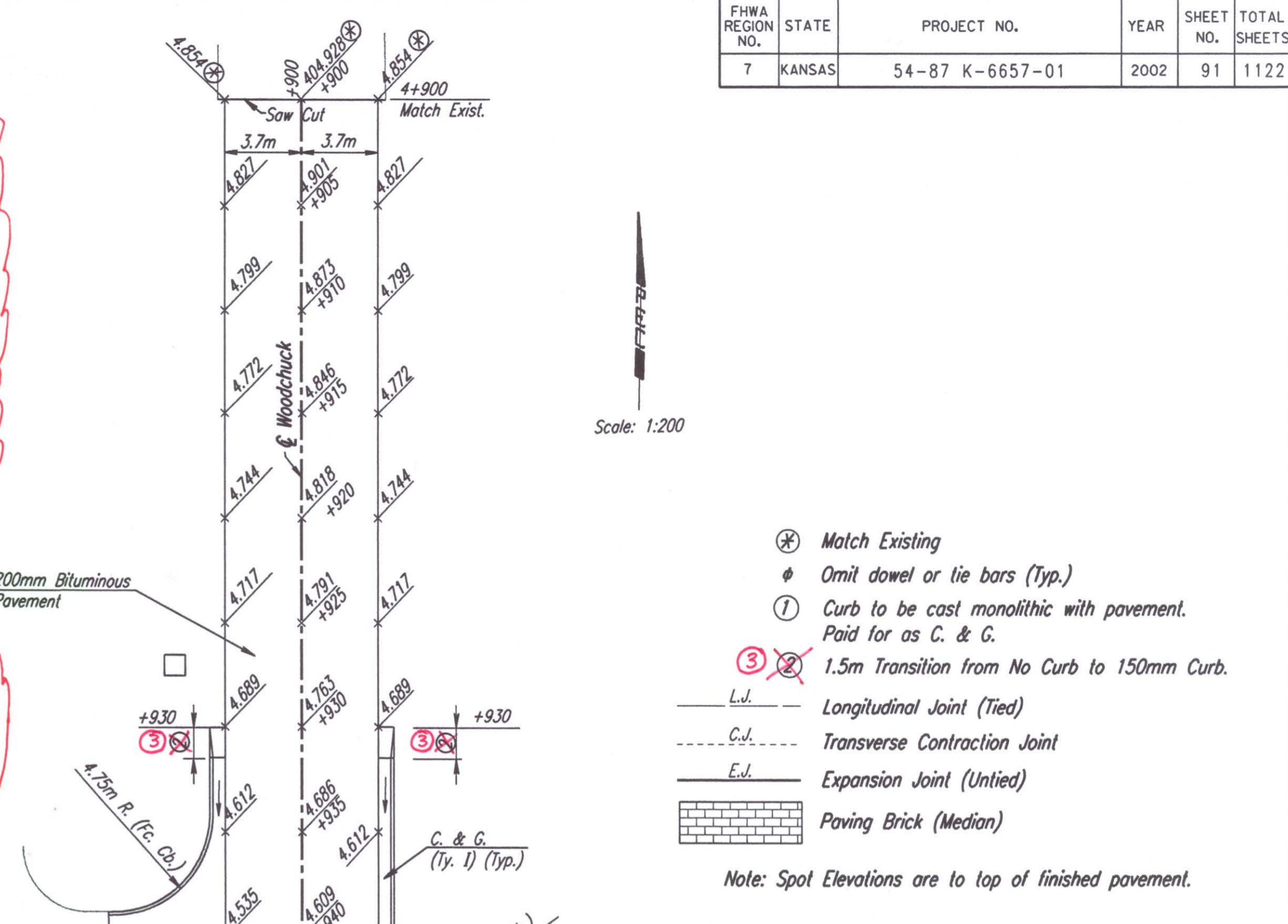
FHWA REGION NO.	STATE	PROJECT NO.	YEAR	SHEET NO.	TOTAL SHEETS
7	KANSAS	54-87 K-6657-01	2002	91	1122

DATE	BY



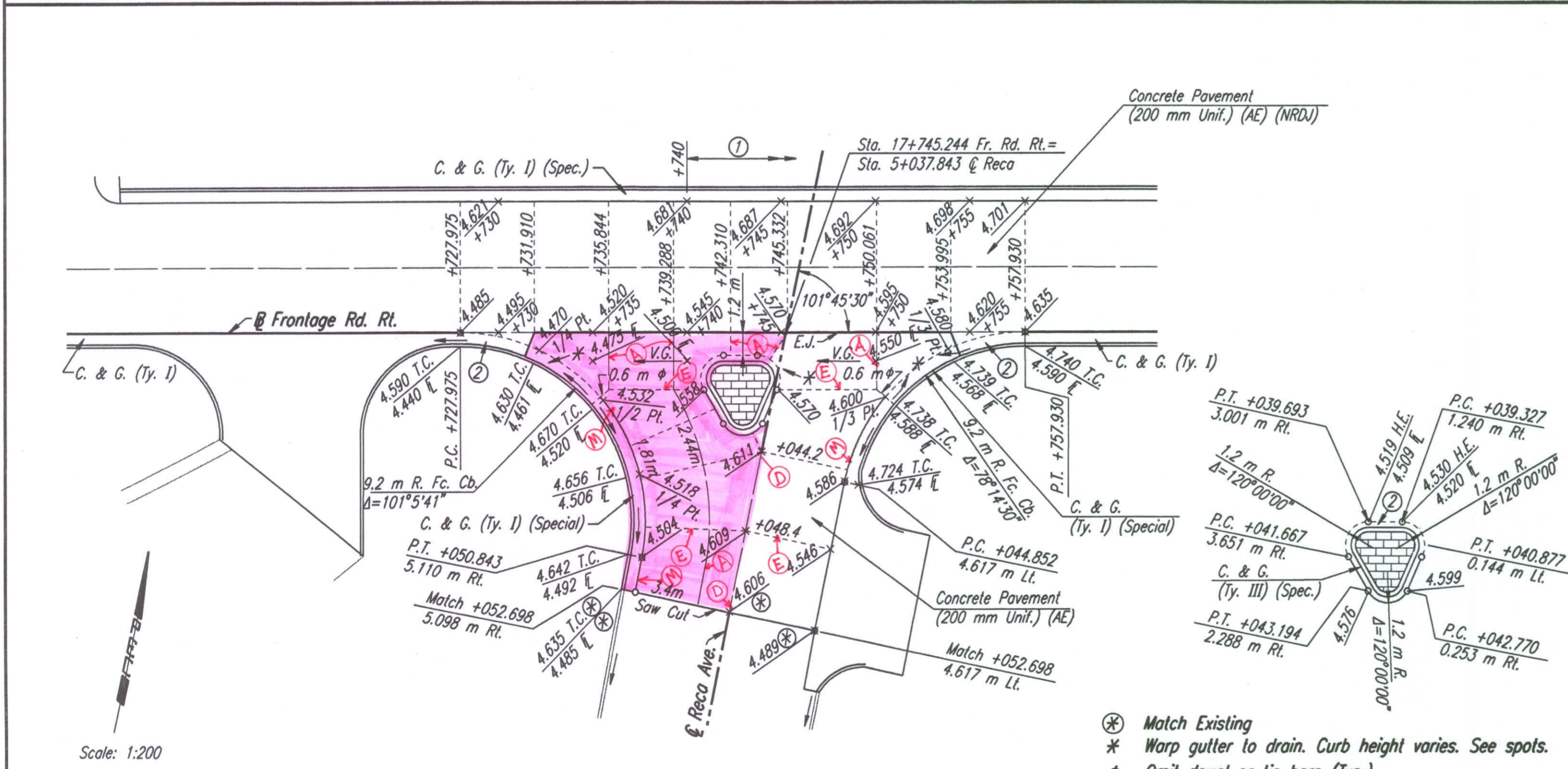
- ⊗ Match Existing
 - * Warp gutter to drain. Curb height varies. See spots.
 - ⊕ Omit dowel or tie bars (Typ.)
 - ① Transition from C. & G. (Ty. I) to C. & G. (Ty. I) (Special). Paid for as C. & G.
 - ② Curb to be cast monolithic with pavement.
- L.J. — Longitudinal Joint (Tied)
 - - - C.J. - - - Transverse Contraction Joint
 - E.J. — Expansion Joint (Untied)
- Paving Brick (Median)
- Note: Spot Elevations are to top of finished pavement. See Coordinate Geometry Sheets for Curve Data.

- CONCRETE PAVEMENT JOINT TYPES:**
- A) CONTRACTION JOINT with #16 x 600mm DEFORMED TIE BARS & SAWN.
 - B) CONSTRUCTION JOINT with #16 x 600mm DEFORMED TIE BARS.
 - C) CONSTRUCTION JOINT: KEYWAY ONLY.
 - D) CONSTRUCTION JOINT with KEYWAY & #16 x 600mm DEFORMED TIE BARS.
- CONCRETE PAVEMENT JOINT TYPES:**
- E) CONTRACTION JOINT with SMOOTH DOWEL BARS:
 - 1) 200mm PCCP = 25mm x 450mm.
 - 2) 260mm PCCP = 32mm x 450mm.
 - F) CONSTRUCTION JOINT: NON-TIED.
 - G) CONSTRUCTION JOINT along curb & gutter with #16 x 900mm EPOXY COATED DEFORMED TIE BARS.
- CONCRETE PAVEMENT JOINT TYPES:**
- H) CONSTRUCTION JOINT with SMOOTH DOWEL BARS:
 - 1) 200mm PCCP = 25mm x 450mm.
 - 2) 260mm PCCP = 32mm x 450mm.
 - I) CONTRACTION JOINT (mainline outside shoulder only) with 2-#16 continuous epoxy deformed bars left uncut & SAWN.
- CONCRETE PAVEMENT JOINT TYPES:**
- J) CONSTRUCTION JOINT (outside shoulder) with 2-#16 continuous epoxy deformed bars.
 - K) CONSTRUCTION JOINT (inside or outside shoulder) NON-TIED & SAWN.
 - L) EXPANSION JOINT (19mm).
 - M) CONSTRUCTION JOINT along curb/gutter with KEYWAY & #16 x 900mm TIE BARS.



- ⊗ Match Existing
 - ⊕ Omit dowel or tie bars (Typ.)
 - ① Curb to be cast monolithic with pavement. Paid for as C. & G.
 - ③ 1.5m Transition from No Curb to 150mm Curb.
- L.J. — Longitudinal Joint (Tied)
 - - - C.J. - - - Transverse Contraction Joint
 - E.J. — Expansion Joint (Untied)
- Paving Brick (Median)
- Note: Spot Elevations are to top of finished pavement.

DSNR: WDH OPER: JGP SCALE: 1:200
 I:/1997/97362/INTERSECTIONS/INTSECT.DGN (4) 3-08-2001 8:23:19 LAST REV: 10-15-01 BY: JGP

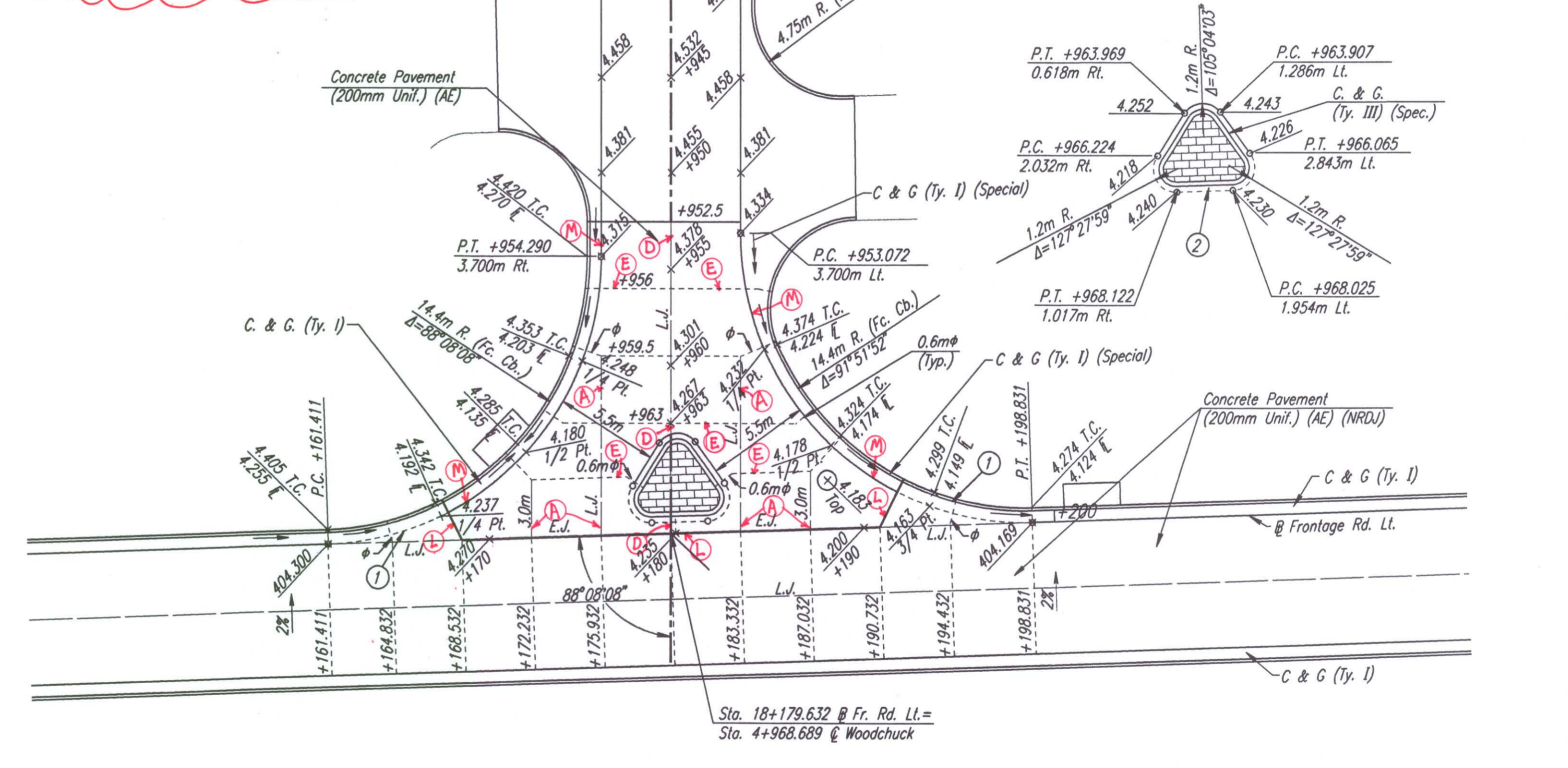


Note: Spot Elevations are to top of finished pavement.

MATERIAL SUBSTITUTION:

Xorex 'Steel Fibers' (2" length) were utilized by Paving Contractor in lieu of Welded Wire Fabric (MW-26 Wires @ 150 mm centers). Steel fiber application rate = seven (7) 55 lb bags per 10 cubic yards, for 200 mm (Uniform) Portland Cement Concrete Pavement.

- ⊗ Match Existing
 - * Warp gutter to drain. Curb height varies. See spots.
 - ⊕ Omit dowel or tie bars (Typ.)
 - ① Transition frontage road x-slope from +2.00% Lt. @ Sta. 17+740 to -2.00% Lt. @ Sta. 17+810.
 - ② Curb to be cast monolithic with pavement. Paid for as C. & G.
- L.J. — Longitudinal Joint (Tied)
 - - - C.J. - - - Transverse Contraction Joint
 - E.J. — Expansion Joint (Untied)
- Paving Brick (Median)



No.	Revisions	By	Date

CITY OF WICHITA
INTERSECTION DETAILS
S. RECA, McCORMICK & WOODCHUCK LT.
 SEDGWICK COUNTY

Professional Engineering Consultants, P.A.
 303 S. TOPEKA • WICHITA, KANSAS 67202
 316-262-2691 • FAX 316-262-3003

Designed by	WDH	Checked by	WDH
Drawn by	JGP	Date	April, 2002
		Job No.	97362