

DATE	
BY	
REFERENCES NOTED	
REFERENCES CHECKED	

CONCRETE PAVEMENT JOINT TYPES:
 A) CONTRACTION JOINT with #16 x 600mm DEFORMED TIE BARS & SAWN.
 B) CONSTRUCTION JOINT with #16 x 600mm DEFORMED TIE BARS ONLY.
 C) CONSTRUCTION JOINT: KEYWAY ONLY.
 D) CONSTRUCTION JOINT with KEYWAY & #16 x 600mm DEFORMED TIE BARS.

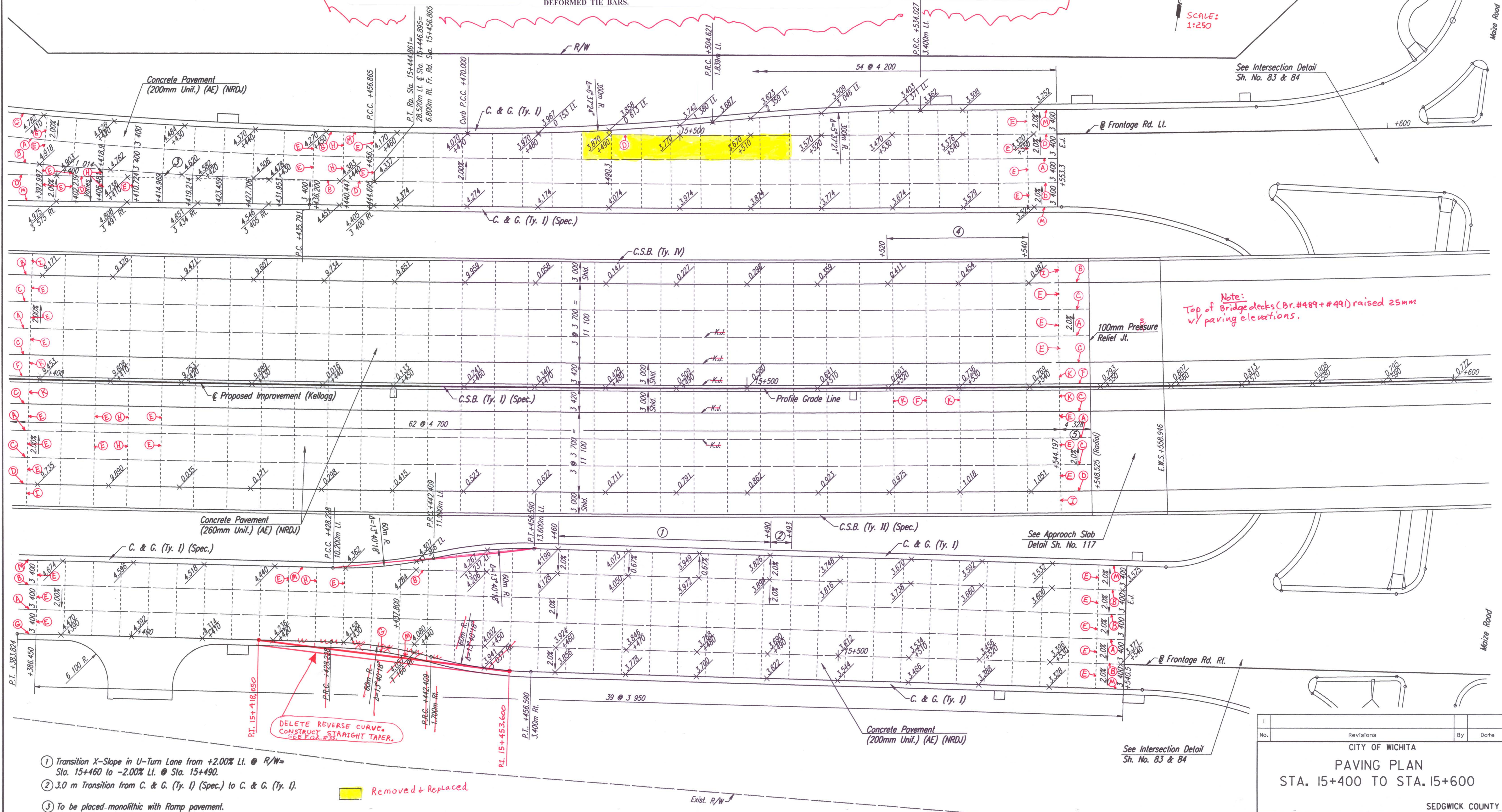
CONCRETE PAVEMENT JOINT TYPES:
 E) CONTRACTION JOINT with SMOOTH DOWEL BARS:
 1) 200mm PCCP = 25mm x 450mm.
 2) 260mm PCCP = 32mm x 450mm.
 F) CONSTRUCTION JOINT: NON-TIED.
 G) CONSTRUCTION JOINT along curb & gutter with #16 x 900mm EPOXY COATED DEFORMED TIE BARS.

CONCRETE PAVEMENT JOINT TYPES:
 H) CONTRACTION JOINT with SMOOTH DOWEL BARS:
 1) 200mm PCCP = 25mm x 450mm.
 2) 260mm PCCP = 32mm x 450mm.
 I) CONTRACTION JOINT (mainline outside shoulder only) with 2-#16 continuous epoxy deformed bars left uncured & SAWN.

CONCRETE PAVEMENT JOINT TYPES:
 J) CONSTRUCTION JOINT (outside shoulder) with 2-#16 continuous epoxy deformed bars.
 K) CONTRACTION JOINT (inside or outside shoulder) NON-TIED & SAWN.
 L) EXPANSION JOINT (19mm).
 M) CONSTRUCTION JOINT along curb/gutter with KEYWAY & #16 x 900mm TIE BARS.

FHWA REGION NO.	STATE	PROJECT NO.	YEAR	SHEET NO.	TOTAL SHEETS
7	KANSAS	54-87 K-6657-01	2002	100	1122

SCALE: 1:250



Note: Top of Bridge decks (Dr. #489 + #491) raised 25mm w/ paving elevations.

DELETE REVERSE CURVE. CONSTRUCT STRAIGHT TAPER.

Removed + Replaced

- ① Transition X-Slope in U-Turn Lane from +2.00% Lt. @ R/W= Sta. 15+460 to -2.00% Lt. @ Sta. 15+490.
- ② 3.0 m Transition from C. & G. (Ty. I) (Spec.) to C. & G. (Ty. I).
- ③ To be placed monolithic with Ramp pavement.
- ④ Transition outside shoulder x-slope Lt. from -4.2% @ Sta. 15+520 to -2.0% @ Sta. 15+540.
- ⑤ Length includes 100mm Pressure Relief Joint.

DSNR: WDH OPER: JGP SCALE: 1:500
 i:/1997/97362/PAVING/PAV154.DGN 10-31-2000 11:28:31 LAST REV: 12-31-01 BY: JGP

No.	Revisions	By	Date

CITY OF WICHITA
PAVING PLAN
 STA. 15+400 TO STA. 15+600

SEDGWICK COUNTY

Professional Engineering Consultants, P.A.
 303 S. TOPEKA • WICHITA, KANSAS 67202
 316-262-2691 • FAX 316-262-3003

Designed by	WDH	Checked by	WDH
Drawn by	JGP	Date	April, 2002
		Job No.	97362