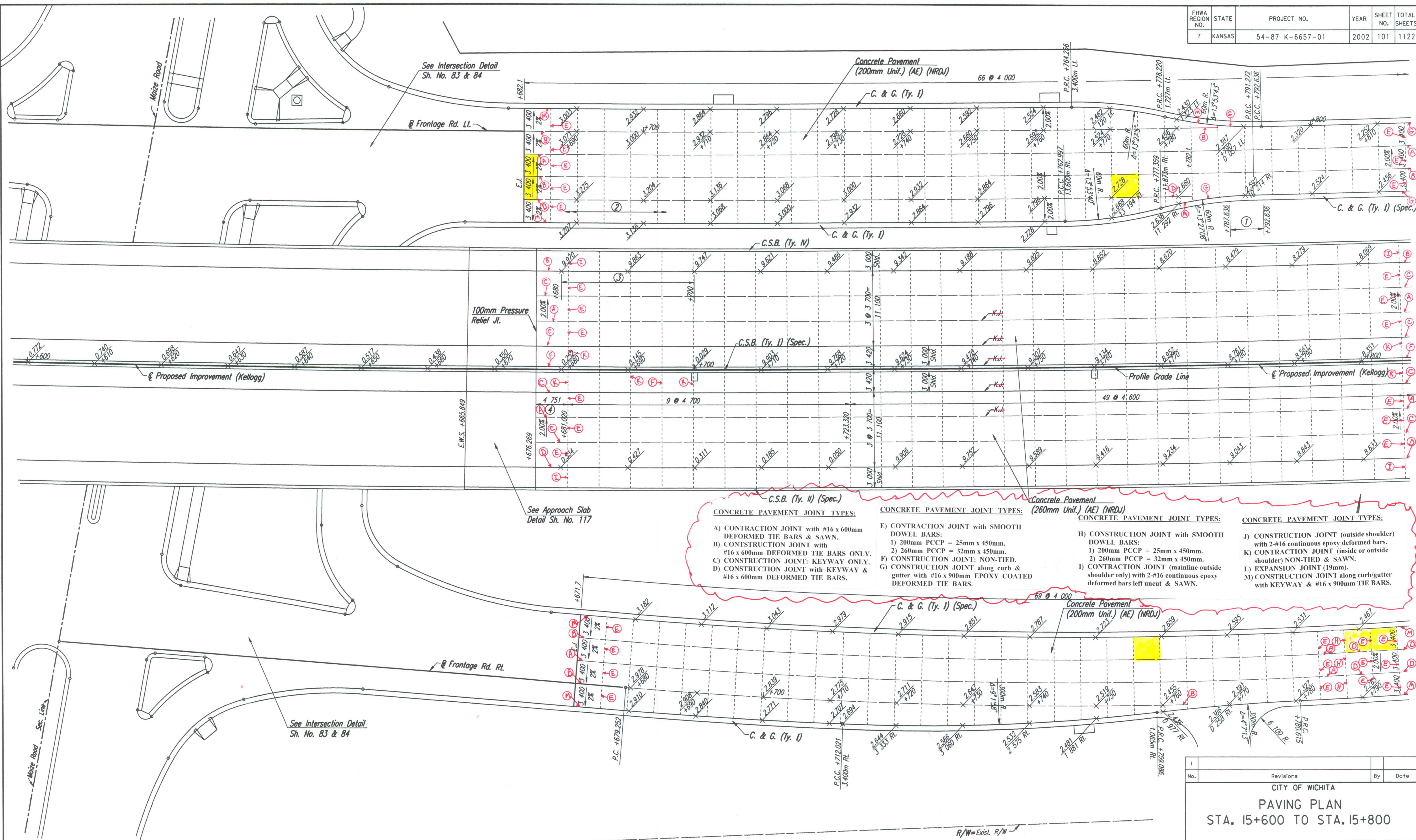


BY	DATE
REFERENCES NOTED	REFERENCES CHECKED



- CONCRETE PAVEMENT JOINT TYPES:**
- A) CONTRACTION JOINT with #16 x 600mm DEFORMED TIE BARS & SAWN.
 - B) CONTRACTION JOINT with #16 x 600mm DEFORMED TIE BARS ONLY.
 - C) CONTRACTION JOINT: KEYWAY ONLY.
 - D) CONTRACTION JOINT with KEYWAY & #16 x 600mm DEFORMED TIE BARS.
 - E) CONTRACTION JOINT with SMOOTH DOWEL BARS:
 - 1) 200mm PCCP = 25mm x 450mm.
 - 2) 260mm PCCP = 32mm x 450mm.
 - F) CONTRACTION JOINT: NON-TIED.
 - G) CONTRACTION JOINT along curb & gutter with #16 x 900mm EPOXY COATED DEFORMED TIE BARS.
 - H) CONSTRUCTION JOINT with SMOOTH DOWEL BARS:
 - 1) 200mm PCCP = 25mm x 450mm.
 - 2) 260mm PCCP = 32mm x 450mm.
 - I) CONTRACTION JOINT (mainline outside shoulder only) with 2-#16 continuous epoxy deformed bars left uncut & SAWN.
 - J) CONSTRUCTION JOINT (outside shoulder) with 2-#16 continuous epoxy deformed bars.
 - K) CONTRACTION JOINT (inside or outside shoulder) NON-TIED & SAWN.
 - L) EXPANSION JOINT (19mm).
 - M) CONSTRUCTION JOINT along curb/gutter with KEYWAY & #16 x 900mm TIE BARS.

DSNR: WDH OPER: JGP SCALE: 1:500
 I:1997/97362/PAVING/PAV156.DGN 10-31-2000 11:28:31 LAST REV: 12-31-01 BY: JGP

- ① 5.0 m transition from C. & G. (Ty. I) to C. & G. (Ty. I) (Spec.).
 - ② Sta. 15+682.1 to Sta. 15+791.272 x-slope on lane from 13.6 m R.I. to 10.2 m R.I. is -2.0% R.I.
 - ③ Transition outside shld. x-slope from -2.0% @ Sta. 15+680 to -4.2% @ Sta. 15+700.
 - ④ Length includes 100mm Pressure Relief Joint.
- Removed + Replaced

No.	Revisions	By	Date

CITY OF WICHITA
PAVING PLAN
STA. 15+600 TO STA. 15+800
SEDGWICK COUNTY

Professional Engineering Consultants, P.A.
 303 S. TOPEKA • WICHITA, KANSAS 67202
 316-262-2691 • FAX 316-262-3003

Designed by	WDH	Checked by	WDH
Drawn by	JGP	Date	April, 2002
		Job No.	97362