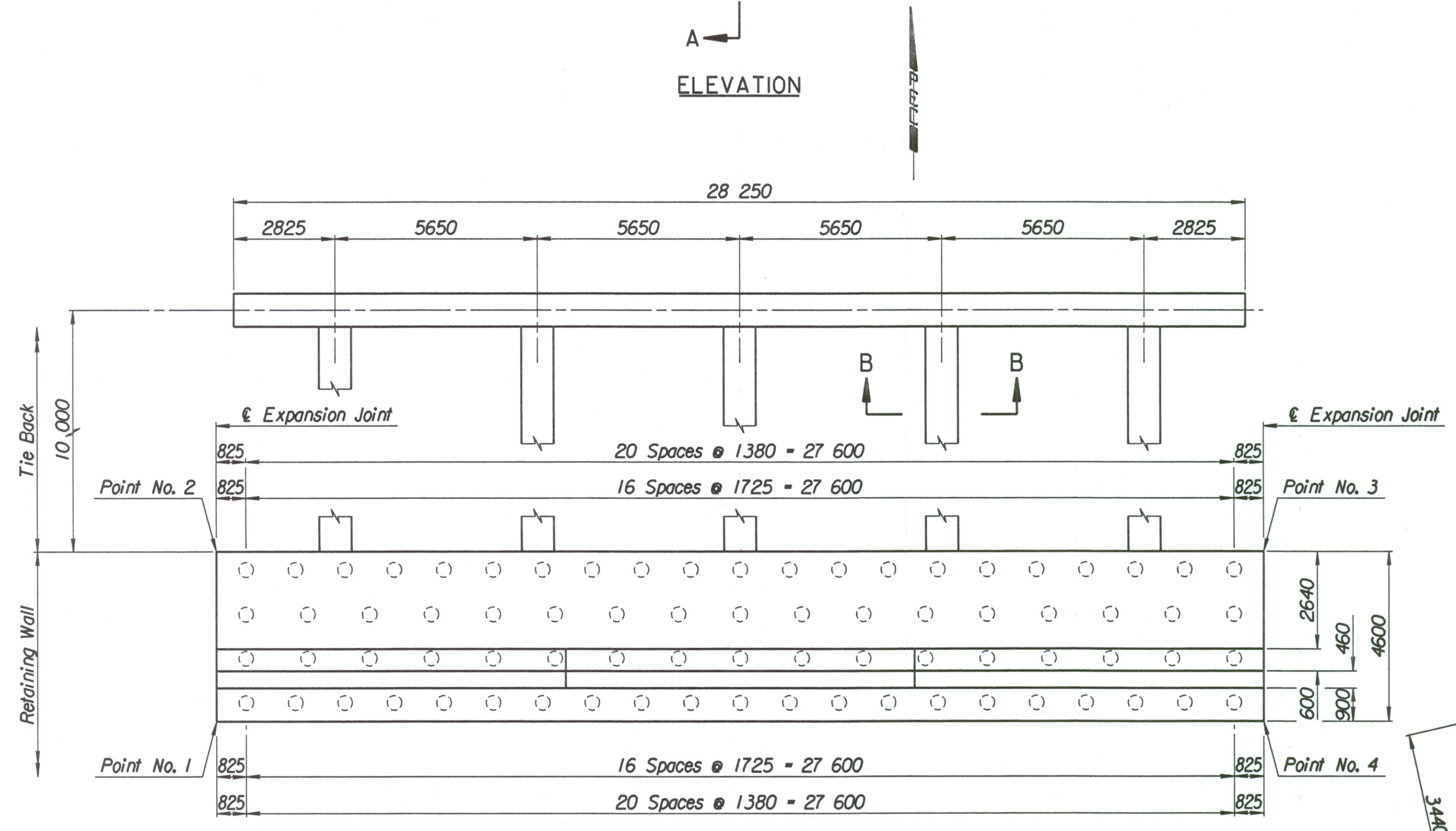
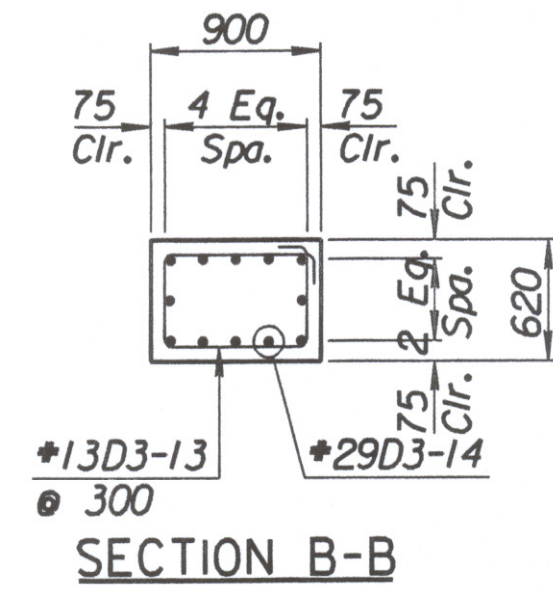
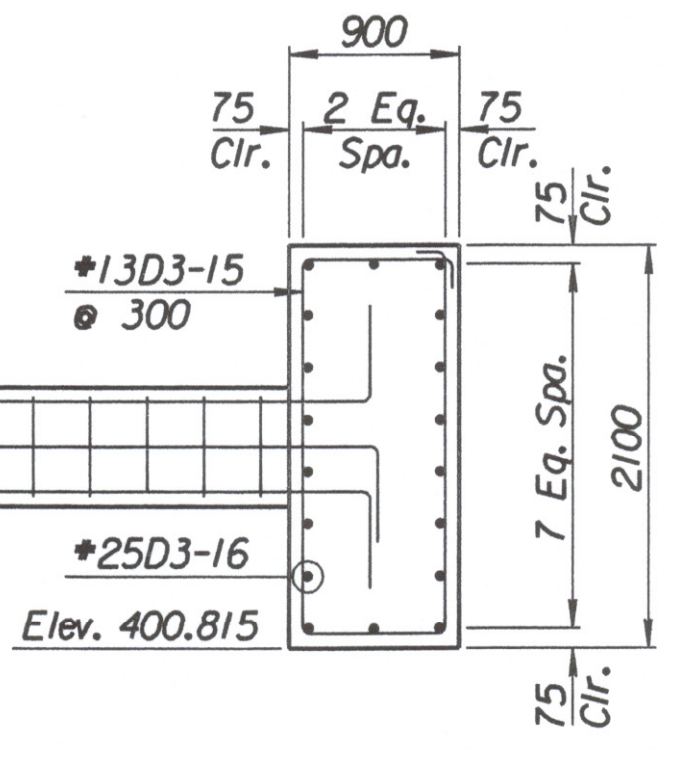
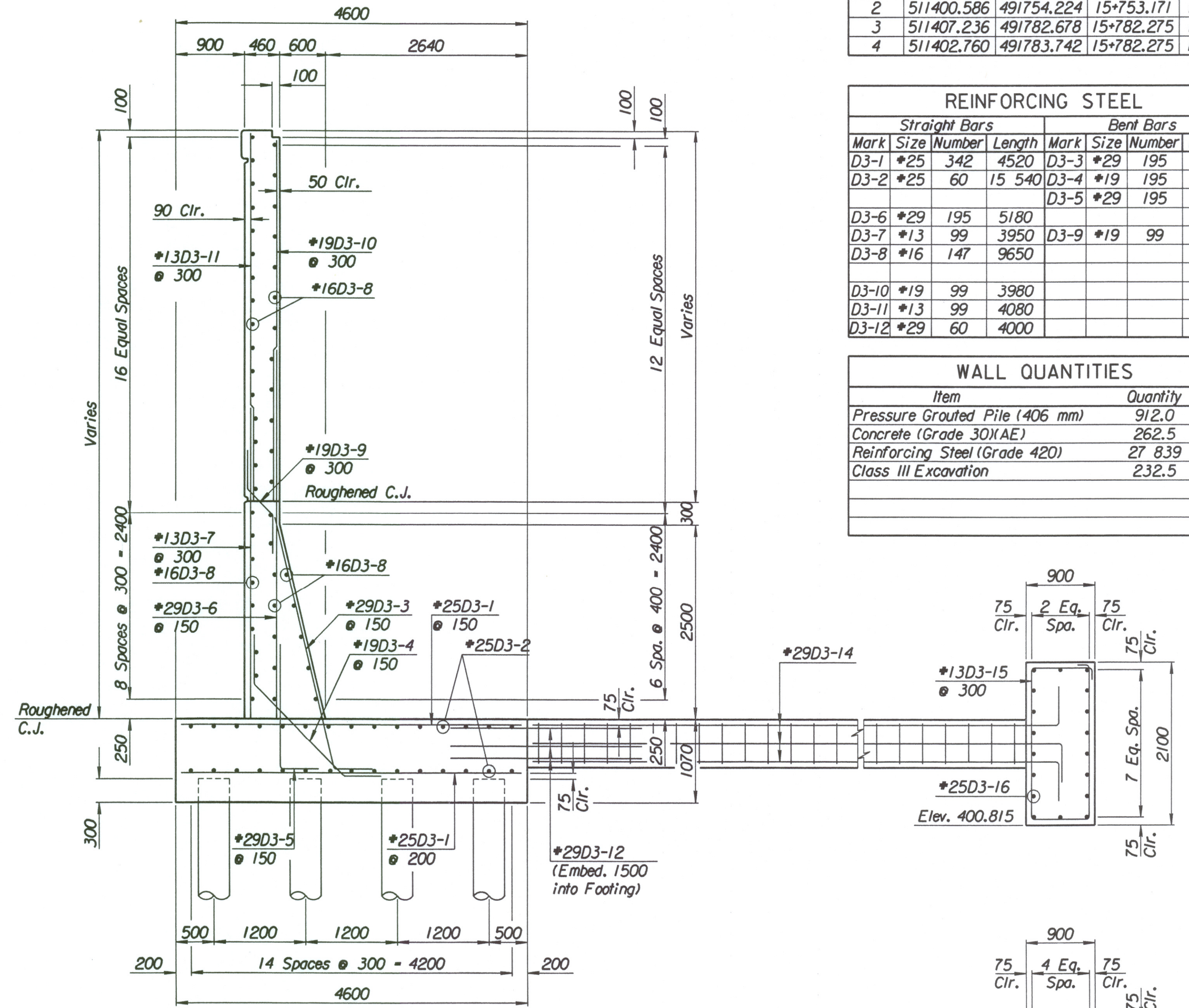
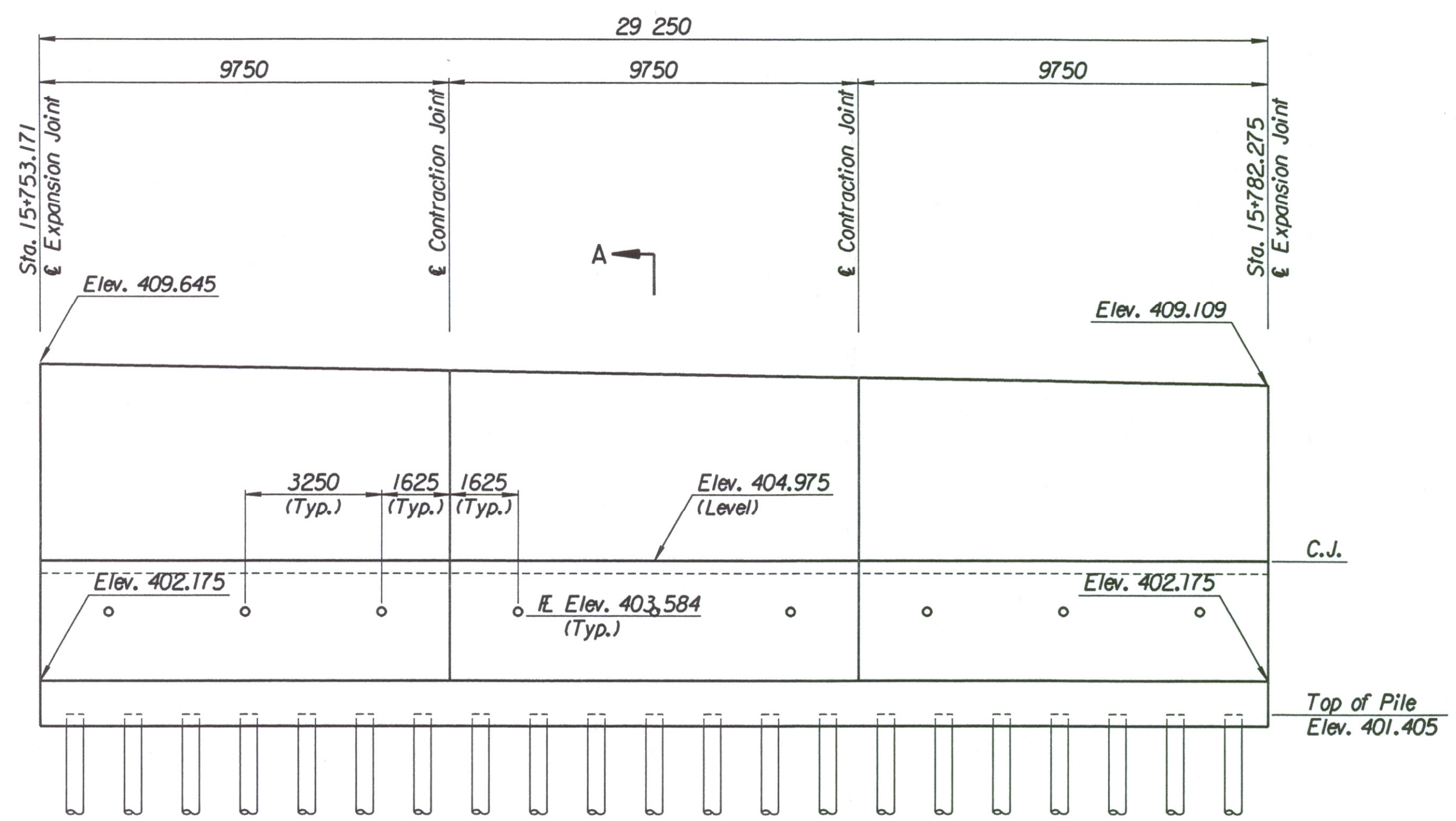


STATE	PROJECT NO.	YEAR	SHEET NO.	TOTAL SHEETS
KANSAS	54-87 K-6657-01	2002	295	1122

LAYOUT INFORMATION				
Point No.	North Coordinate	East Coordinate	Station	Offset
1	511396.103	491755.253	15+753.171	19.395 Rt.
2	511400.586	491754.224	15+753.171	14.795 Rt.
3	511407.236	491782.678	15+782.275	14.795 Rt.
4	511402.760	491783.742	15+782.275	19.395 Rt.

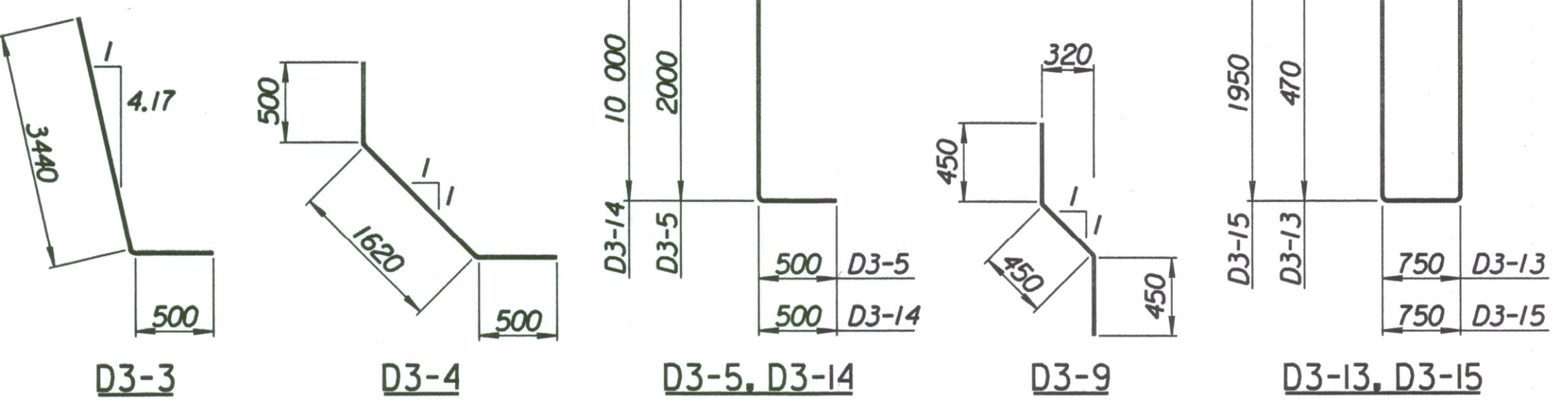
REINFORCING STEEL							
Straight Bars			Bent Bars				
Mark	Size	Number	Length	Mark	Size	Number	Length
D3-1	*25	342	4520	D3-3	*29	195	3940
D3-2	*25	60	15 540	D3-4	*19	195	2620
				D3-5	*29	195	2500
D3-6	*29	195	5180				
D3-7	*13	99	3950	D3-9	*19	99	1350
D3-8	*16	147	9650				
D3-10	*19	99	3980				
D3-11	*13	99	4080				
D3-12	*29	60	4000				

WALL QUANTITIES		
Item	Quantity	Unit
Pressure Grouted Pile (406 mm)	912.0	m
Concrete (Grade 30(AE))	262.5	m <sup>3</sup>
Reinforcing Steel (Grade 420)	27 839	kg
Class III Excavation	232.5	m <sup>3</sup>



TIE BACK REINFORCING STEEL							
Straight Bars				Bent Bars			
Mark	Size	Number	Length	Mark	Size	Number	Length
D3-16	*25	36	15 040	D3-13	*13	160	2740
				D3-14	*29	60	10 500
				D3-15	*13	94	5700

TIE BACK QUANTITIES		
Item	Quantity	Unit
Concrete (Grade 30(AE))	80.0	m <sup>3</sup>
Reinforcing Steel (Grade 420)	6307	kg



BENDING DIAGRAMS  
All dimensions are out to out of bars.

No.	Revisions	By	Date

CITY OF WICHITA  
**MAIZE SOUTHEAST WALL**  
STA. 15+753.171 TO STA. 15+782.275  
SEDGWICK COUNTY

**Professional Engineering Consultants, P.A.**  
303 S. TOPEKA • WICHITA, KANSAS 67202  
316-262-2691 • FAX 316-262-3003

Designed by P.D.F.      Checked by R.A.S.  
Drawn by W.L.L.      Date Apr. 2002      Job No. 97362

Drawn by: will  
Plotted by: drp 3-25-2002  
1:1997/97362/001/bridge/maizerd/SEWall-4