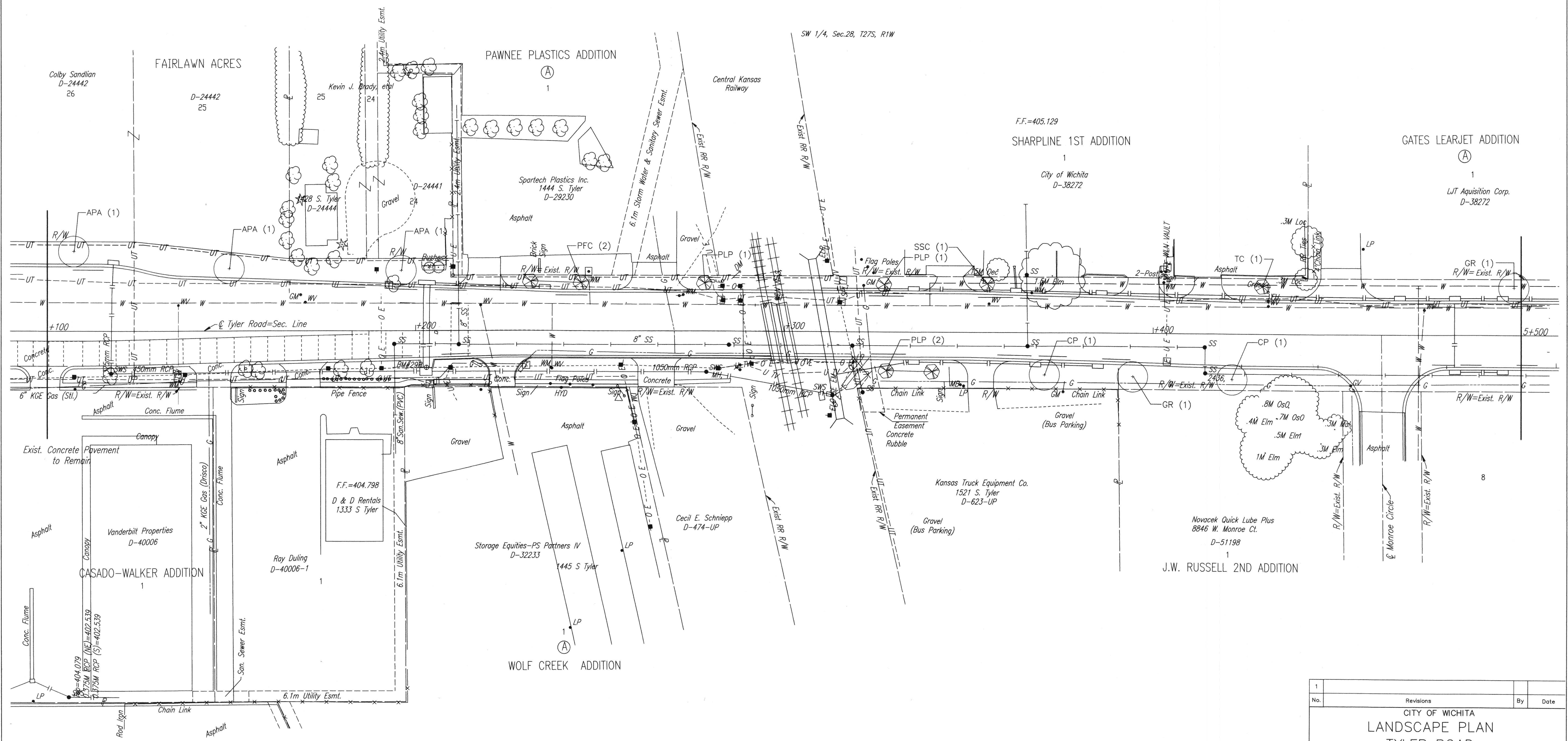


FHWA REGION NO.	STATE	PROJECT NO.	YEAR	SHEET NO.	TOTAL SHEETS
7	KANSAS	54-87 K-6657-01	2002	888	1122

Scale: 1:500

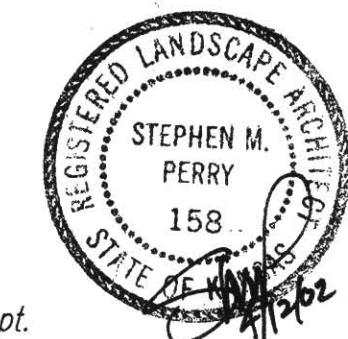
BY	DATE
REFERENCES NOTED	
REFERENCES CHECKED	



DSNR: WDH OPER: DWR SCALE: 1:500
 F:/9934/TYLS5100



UTILITIES
 Power - K G & E
 Telephone - Southwestern Bell
 Gas - K G & E Gas
 Cable TV - Cox Communications
 Water - City of Wichita Water Dept.
 San. Sewer - City of Wichita Sewer Dept.



1		Revisions		By	Date
No.					
CITY OF WICHITA LANDSCAPE PLAN TYLER ROAD STA. 5+100 TO STA. 5+500 SEDGWICK COUNTY					
Professional Engineering Consultants, P.A. 303 S. TOPEKA • WICHITA, KANSAS 67202 316-262-2691 • FAX 316-262-3003					
Designed by	SMP	Checked by			
Drawn by	DWR	Date	April, 2002	Job No.	97362