

FHWA REGION NO.	STATE	PROJECT NO.	YEAR	SHEET NO.	TOTAL SHEETS
7	KANSAS	54-87 K-6657-01	2005	657R	1122

ADDENDUM NO. 2:
 The following changes and additions shall be made to the Plans and proposal. When this addendum conflicts with the specifications, plans, or special provisions or Addendum No. 1, **THIS ADDENDUM SHALL GOVERN.**

Sheet 657
 1. Add Note-Conduits for joint use light poles shall be included as part of the Traffic Signal Installation. Refer to the wiring diagram on Sheet No. 659 for number and size of conduits.

Sta. 3+862, 13.5m Rt. ±
 Install Meter & Disconnect Box. Coordinate with KG&E for Power Connection

TRAFFIC CONTROLLER DESCRIPTION

The Traffic Signal Controller shall comply with the requirements defined in the Specifications for a Type 170E Controller with 412 prom module and a 400 modem. They shall be furnished and installed with a Model 332 cabinet, 2-type 242 isolator units, 1 video detection unit, 6 switch packs, 2-type 204 flashers, 3 flash transfer relay, and a Model 210P conflict monitor MS or ECL. The Controller shall also be furnished with W4IKS Version 58 or latest version of software developed by WAPITI MICRO SYSTEMS.

A street master shall be installed within the controller cabinet. It shall be a type 170 controller unit, running W70SM. It shall be capable of no less than 9 independent programs. Program and Time settings shall be furnished by the Owner.

All Signal System components shall comply with Part 700 of The City of Wichita Standard Specifications.

PHASING & TIMING

The Contractor shall arrange for a "Bench" test of the traffic signal system with phase timing programs furnished by the City Engineer. This testing shall be performed at a location in the City of Wichita and shall demonstrate the signal operation including the various phase timing plans provided by the City Engineer.

APPROVED SUBMITTALS:
 No. 57.1-Traffic Signal Equipment.
 No. 57.2-Misc. Traffic Signal Equipment (Conduit, Wire and Boxes).
 No. 57.3 -Traffic Signal Poles.

NOTE:
 For actual location of Traffic Signal Poles and Manholes, See Lighting Plans.

DETECTOR SUMMARY - North Intersection

CAMERA NO.	DETECTION ZONE	MODE	SIZE (LxW)	PHASE CALLED	PHASE EXTENDED	DELAY/STRETCH TIMER	INITIAL SETTING (SEC.)
3	3-1	Presence	15x1.8	-	Overlap B		
3	3-2	Presence	15x1.8	-	Overlap B		
3	3-3	Presence	15x1.8	-	Overlap B		
4	8-1,2,3,4	Pulse	1.8x1.8	8	8	Stretch	1.0
4	8-5,6,7,8	Pulse	1.8x1.8	8	8	Stretch	1.0
4	8-9	Presence	18x1.8	8	8		
4	8-10	Presence	18x1.8	8	8		
4	8-11	Presence	18x1.8	8	8		
4	8-12	Presence	18x1.8	8	8		
6	2-1	Presence	15x1.8	2	2		
6	2-2	Presence	15x1.8	2	2		
6	2-3	Presence	15x1.8	2	2		
6	2-4,5,6	Pulse	1.8x1.8	2	2	Stretch	1.0
6	2-7,8,9	Pulse	1.8x1.8	2	2	Stretch	1.0

① Detection Zones shall be adjusted to avoid detecting Cross-Traffic

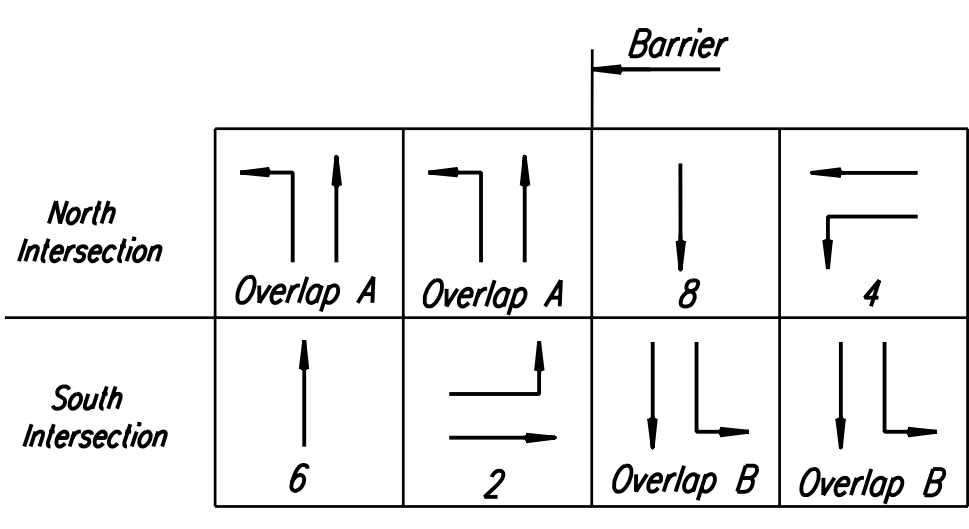
DETECTOR SUMMARY - South Intersection

CAMERA NO.	DETECTION ZONE	MODE	SIZE (LxW)	PHASE CALLED	PHASE EXTENDED	DELAY/STRETCH TIMER	INITIAL SETTING (SEC.)
1	1-1	Presence	15x1.8	-	Overlap A		
1	1-2	Presence	15x1.8	-	Overlap A		
1	1-3	Presence	15x1.8	-	Overlap A		
1	1-4	Presence	15x1.8	-	Overlap A		
2	4-1,2,3	Pulse	1.8x1.8	4	4	Stretch	1.0
2	4-4,5,6	Pulse	1.8x1.8	4	4	Stretch	1.0
2	4-7	Presence	15x1.8	4	4		
2	4-8	Presence	15x1.8	4	4		
2	4-9	Presence	15x1.8	4	4		
5	6-1	Presence	18x1.8	6	6		
5	6-2	Presence	18x1.8	6	6		
5	6-3	Presence	18x1.8	6	6		
5	6-4,5,6	Pulse	1.8x1.8	6	6	Stretch	1.0
5	6-7,8,9	Pulse	1.8x1.8	6	6	Stretch	1.0

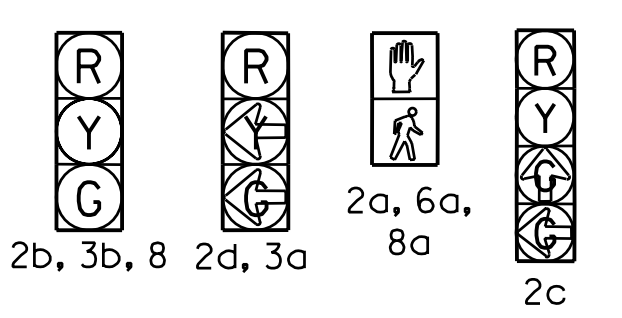
① Detection Zones shall be adjusted to avoid detecting Cross-Traffic

FUNCTION TABLE

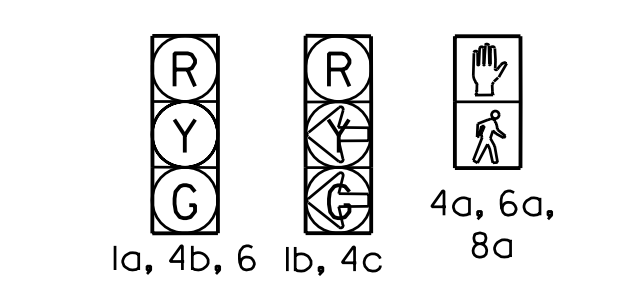
FUNCTION	PHASE							
	1	2	3	4	5	6	7	8
VEHICLE RECALL								x
PED RECALL								
RED LOCK								
YELLOW LOCK								
PERMIT		x		x		x		x
PED PHASES		x		x		x		x
LEAD PHASES		x		x		x		x
DOUBLE ENTRY								
SEQUENTIAL TIMING								
START-UP YELLOW								
OVERLAP A		x				x		
OVERLAP B				x				x
OVERLAP C					x			
OVERLAP D							x	
EXCLUSIVE								
SIMULTANEOUS GAP								



PHASE DIAGRAM INTERSECTION



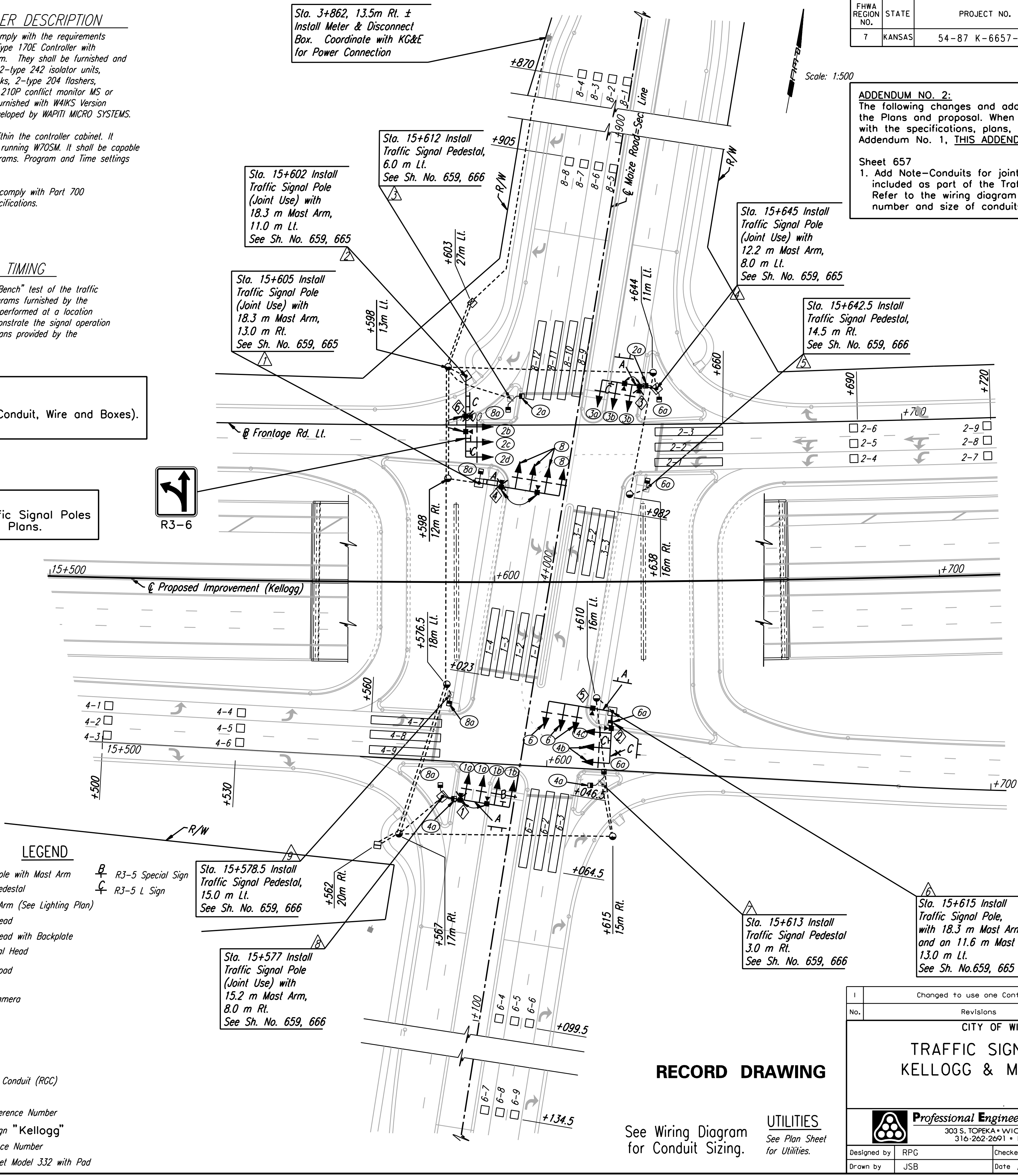
SIGNAL HEAD ARRANGMENT NORTH INTERSECTION



SIGNAL HEAD ARRANGMENT SOUTH INTERSECTION

LEGEND

- ☐ Traffic Signal Pole with Mast Arm
- ☐ Traffic Signal Pedestal
- ☀ Luminaire with Arm (See Lighting Plan)
- ☑ Traffic Signal Head
- ☑ Traffic Signal Head with Backplate
- ☑ Pedestrian Signal Head
- ☑ Controller with pad
- ☑ Service Box
- ☑ Traffic Signal Camera
- 1-1 Camera Zone
- 1-1 Camera Zone
- Y R10-10 Sign
- X R10-12 Sign
- Rigid Galvanized Conduit (RGC)
- ② Signal Phase
- △ Signal Pole Reference Number
- ▲ Street Name Sign "Kellogg"
- ☑ Camera Reference Number
- ☑ Controller Cabinet Model 332 with Pad
- ☑ Street Name Sign "Maize"
- R3-5L R3-5 Special Sign
- R3-5L R3-5 L Sign



RECORD DRAWING

See Wiring Diagram for Conduit Sizing.

UTILITIES
 See Plan Sheet for Utilities.

Changed to use one Controller		RPG	5/24/05
No.	Revisions	By	Date
CITY OF WICHITA			
TRAFFIC SIGNAL PLAN			
KELLOGG & MAIZE ROAD			
SEDGWICK COUNTY			
Professional Engineering Consultants, P.A.			
303 S. TOPEKA • WICHITA, KANSAS 67202 316-262-2691 • FAX 316-262-3003			
Designed by	RPG	Checked by	BER
Drawn by	JSB	Date	Apr 11 2002
		Job No.	97362

DATE	
BY	
REFERENCES NOTED	
REFERENCES CHECKED	

DSNR: RPG OPER: SDM SCALE: 1:500
 :/1997/97362/As-Built/dgn/No. 3/Sh 657R-maizepl-revision.dgn Last Rev: 9-19-07 By: gdr