

GENERAL NOTES

- ALL ELEVATIONS SHOWN ARE USGS DATUM.
- CONTRACTOR WILL BE REQUIRED TO PROVIDE A MINIMUM ADVANCE NOTICE OF FORTY-EIGHT (48) HOURS TO UTILITY COMPANIES PRIOR TO STARTING ANY EXCAVATION AS FOLLOWS:
KANSAS ONE-CALL 687-2470
THE CONTRACTOR MUST NOTIFY THE FOLLOWING IN CASE OF AN EMERGENCY:
COX COMMUNICATIONS 262-0661
KANSAS GAS SERVICE 832-3169
WESTAR ENERGY 383-8600
AQUILA NETWORK 1(800)-527-0357
AT&T 1(800)-870-8390
CITY OF WICHITA WATER DEPARTMENT 262-6000
CITY OF WICHITA SEWER MAINTENANCE 262-6000
CITY OF ANDOVER 733-1303
- ALL WATER MAINS AND APPURTENANCES SHALL BE INSTALLED IN ACCORDANCE WITH CITY OF WICHITA, KANSAS STANDARD SPECIFICATIONS.
- THE WATER MAIN SHALL BE CONSTRUCTED ON THE ALIGNMENT SHOWN BY THE PLANS. TREES AND SHRUBS IN PUBLIC RIGHT-OF-WAY WHICH ARE IN DIRECT CONFLICT WITH PROPOSED NEW CONSTRUCTION SHALL BE REMOVED BY THE CONTRACTOR WITH THE ENGINEER'S APPROVAL. TREES AND SHRUBS WHICH ARE NOT IN DIRECT CONFLICT WITH PROPOSED NEW CONSTRUCTION SHALL BE SAVED AND PROTECTED FROM DAMAGE. THE COST FOR ANY NECESSARY TREE TRIMMING, CLEARING AND/OR GRUBBING SHALL BE SUBSIDIARY TO SITE CLEARING.
- OPENING AND CLOSING WATER VALVES SHALL BE DONE SLOWLY TO PREVENT DAMAGE TO THE WATER DISTRIBUTION SYSTEM FROM WATER HAMMER. ALL VALVES CLOSED BY THE CONTRACTOR MUST BE REOPENED AS NEW CONSTRUCTION PERMITS. PROJECT INSPECTOR MUST ASCERTAIN THAT ANY VALVE CLOSED BY THE CONTRACTOR IS REOPENED. CONTRACTOR WILL BE PERMITTED TO OPERATE WATER VALVES ONLY WHEN THE PROJECT INSPECTOR ASSIGNED TO THE PROJECT IS PRESENT.
- THE CONTRACTOR SHALL NOT START WORK ON THE PROJECT UNTIL THE PROJECT INSPECTOR IS ASSIGNED TO THE PROJECT AND IS PRESENT ON THE SITE. ANY WORK DONE WITHOUT INSPECTION WILL BE REQUIRED TO BE UNCOVERED FOR INSPECTION.
- THE CONTRACTOR SHALL GIVE ALL PROPERTY OWNERS AND/OR TENANTS OF DEVELOPED PROPERTY DIRECTLY ABUTTING THE CONSTRUCTION OF THIS PROJECT A MINIMUM OF TEN (10) DAYS ADVANCE NOTICE PRIOR TO START OF CONSTRUCTION.
- THE CONTRACTOR SHALL BE RESPONSIBLE FOR PRESERVING PROPERTY IRONS. THE CONTRACTOR SHALL BE REQUIRED TO RE-ESTABLISH ANY PROPERTY IRONS WHICH ARE DAMAGED OR DESTROYED BY HIS CONSTRUCTION OPERATIONS. SUCH IRONS SHALL BE RE-ESTABLISHED BY A LICENSED LAND SURVEYOR IN ACCORDANCE WITH STATE LAWS. ALL COSTS FOR THIS WORK SHALL BE SUBSIDIARY TO SITE RESTORATION.
- THE CONTRACTOR SHALL RESTORE ALL DITCHES, SWALES, ROAD SHOULDERS, ENTRANCES, AND BANKLINES TO THEIR ORIGINAL SLOPES AND GRADES EXCEPT AS SHOWN OTHERWISE.
- NO SERVICES WILL BE INSTALLED AS PART OF THIS PROJECT.
- INTERURBAN TRAFFIC GENERATED OUTSIDE THE PROJECT AREA AND LOCAL BUSINESS OR RESIDENTIAL TRAFFIC GENERATED WITHIN THE PROJECT AREA ARE TO BE CARRIED THROUGH CONSTRUCTION AS FURTHER PROMULGATED BY PROJECT SPECIAL PROVISIONS. THE CONTRACTOR SHALL UTILIZE BARRICADES, SIGNS, GUARDS, AND FLAGMEN IN ACCORDANCE WITH THE MANUAL ON UNIFORM TRAFFIC CONTROL DEVICES.
- RUBBLE FROM THE REMOVAL OF MISCELLANEOUS STRUCTURES INCLUDING ANY TREES REMOVED AND TREE TRIMMINGS AND EXCESS EXCAVATED MATERIAL SHALL BE DISPOSED OF ON SITES PROVIDED BY THE CONTRACTOR. THESE SITES SHALL ALSO BE APPROVED OF BY THE ENGINEER AS TO SUITABILITY, APPEARANCE, AND SITE LOCATION. LOCATIONS THAT, IN THE OPINION OF THE ENGINEER, LEAVE AN UNSIGHTLY APPEARANCE WILL NOT BE APPROVED. ALL DISPOSAL SITES MUST BE APPROVED BY THE KANSAS DEPARTMENT OF HEALTH AND ENVIRONMENT. MATERIAL EITHER STOCKPILED OR DISPOSED OF IN A FLOOD PLAIN WILL REQUIRE A KANSAS STATE BOARD OF AGRICULTURE PERMIT. ANY MATERIAL DUMPED IN WATERS OF THE UNITED STATES OR WETLANDS IS SUBJECT TO U.S. CORPS OF ENGINEERS PERMITTING REGULATIONS. ANY MATERIAL BURIED OR STOCKPILED BEYOND APPROVED CONSTRUCTION LIMITS MAY REQUIRE ARCHAEOLOGICAL INVESTIGATIONS UNLESS BURIED IN A PREVIOUSLY APPROVED DISPOSAL LOCATION.
- ALL LAWN/TURF AREAS DISTURBED BY CONSTRUCTION OF THE PROPOSED IMPROVEMENTS SHALL BE RESTORED WITH THE SAME GRASS/SOD AS EXISTING. RESTORATION OF DISTURBED AREAS SHALL INCLUDE, BUT NOT BE LIMITED TO, TOP SOIL PREPARATION, SEEDING, MULCH, AND/OR RESEEDING. ALL SEEDING/SODDING WORK SHALL BE IN ACCORDANCE WITH THE CITY OF WICHITA STANDARD SPECIFICATIONS AND THE CITY OF WICHITA ADMINISTRATIVE REGULATION NO. AR78 WHICH GOVERNS CLEANUP AND RESTORATION OR REPLACEMENT FOLLOWING CONSTRUCTION. ALL COSTS FOR THIS WORK SHALL BE SUBSIDIARY TO THE LUMP SUM PRICE BID FOR "SITE RESTORATION".
- ALL APPROVED EXCESS EXCAVATION WHICH IS TO BE WASTED SHALL BE STOCKPILED WITHIN CORNERSTONE SCHOOL ADDITION AT NO ADDITIONAL COST TO THE OWNER. STOCKPILE LOCATIONS SHALL BE AS DIRECTED BY THE OWNER AND IN ACCORDANCE WITH GENERAL NOTE NO. 12 ABOVE.
- EACH BIDDER SHALL VISIT THE SITE OF THE PROJECT BEFORE SUBMITTING THE PROPOSAL FOR THIS WORK SO THAT HE WILL BE FULLY INFORMED OF THE EXISTING FIELD CONDITIONS AND THE OBSTACLES WHICH MIGHT BE ENCOUNTERED. UPON AWARD OF THE CONTRACT THE CONTRACTOR WILL NOT BE GRANTED ANY ADDITIONAL COMPENSATION WITH REGARDS TO TIME AND MONEY FOR CONDITIONS THAT MAY HAVE BEEN EVALUATED DURING ANY INSPECTION OF THE SITE.
- THE CONTRACTOR SHALL SEED ALL AREAS DISTURBED BY CONSTRUCTION ACTIVITIES WITH TEMPORARY RYE GRASS. RYE GRASS SEED SHALL BE PLANTED AT A MINIMUM RATE OF SIX (6) POUNDS PER ONE THOUSAND (1,000) SQUARE FEET. THIS TEMPORARY SEEDING MAY BE OMITTED ONLY IF OTHER SEEDING IS REQUIRED IN ACCORDANCE WITH GENERAL NOTE NO. 13 ABOVE. TEMPORARY SEEDING OR PERMANENT SEEDING/SODDING SHALL BE APPLIED WITHIN 14 DAYS AFTER THE AREA HAS BEEN DISTURBED.
- THE CONTRACTOR MUST OBTAIN A COPY OF THE APPROVED SEDGWICK COUNTY AND BUTLER COUNTY "UTILITY PERMIT AGREEMENT" FOR "USE OF PUBLIC ROAD RIGHT-OF-WAY" PRIOR TO THE START OF CONSTRUCTION. SEE PROJECT SPECIAL PROVISIONS FOR ADDITIONAL INFORMATION. PERMIT WILL BE OBTAINED BY THE CITY.
- EROSION CONTROL (BMP'S)
THE CONTRACTOR SHALL INSTALL AND/OR MAINTAIN EROSION CONTROL METHODS AS SPECIFIED ON SHEETS 10-13. THE QUANTITIES SHOWN IN THE PLANS ARE ESTIMATED, AND SHOULD BE CONSIDERED THE MINIMUM EFFORT REQUIRED. THE GENERAL LOCATION OF THE REQUIRED EROSION CONTROL IS SHOWN IN THE PLANS. THE WATERLINE CONTRACTOR SHALL BE RESPONSIBLE FOR MAINTAINING THE EROSION CONTROL SHOWN THROUGHOUT THE COMPLETION OF THIS PROJECT. INSTALLATION OF THESE BMP'S DOES NOT RELIEVE THE CONTRACTOR OF THE RESPONSIBILITY OF ABATING SOIL EROSION.
- CONSTRUCTION STAKING SHALL BE BY PROFESSIONAL ENGINEERING CONSULTANTS, P.A. CONTACT MR. RUSS BECKETT AT 316-262-2691.

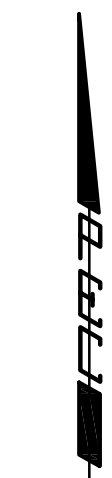
CONTROL POINTS Δ #1000

CP#1000- N-5,028.3713, E-(-89.9484)
#4 REBAR
71.91' WSW, 3/4" IP AT SECTION CORNER
50.26' N, PLAT CORNER
8.50' SW, EDGE OF PAVEMENT
66.00' W, \odot 159TH ST. EAST

CP#1001- N-5,028.9427, E-(-196.1344)
PK NAIL IN ASPHALT SHOULDER
4.50' N, N EDGE OF ASPHALT SHOULDER OF 21ST ST. NORTH
42.00' E, \odot 159TH ST. EAST

CP#1002- N-5,539.3689, E-(-168.0798)
60D NAIL IN W EDGE OF GRAVEL ROAD (159TH ST. EAST)
535.00' S, \odot 21ST ST. NORTH
6.20' W, SIGN
25.60' NNW, RAILROAD SPIKE IN E FACE OF POWER POLE

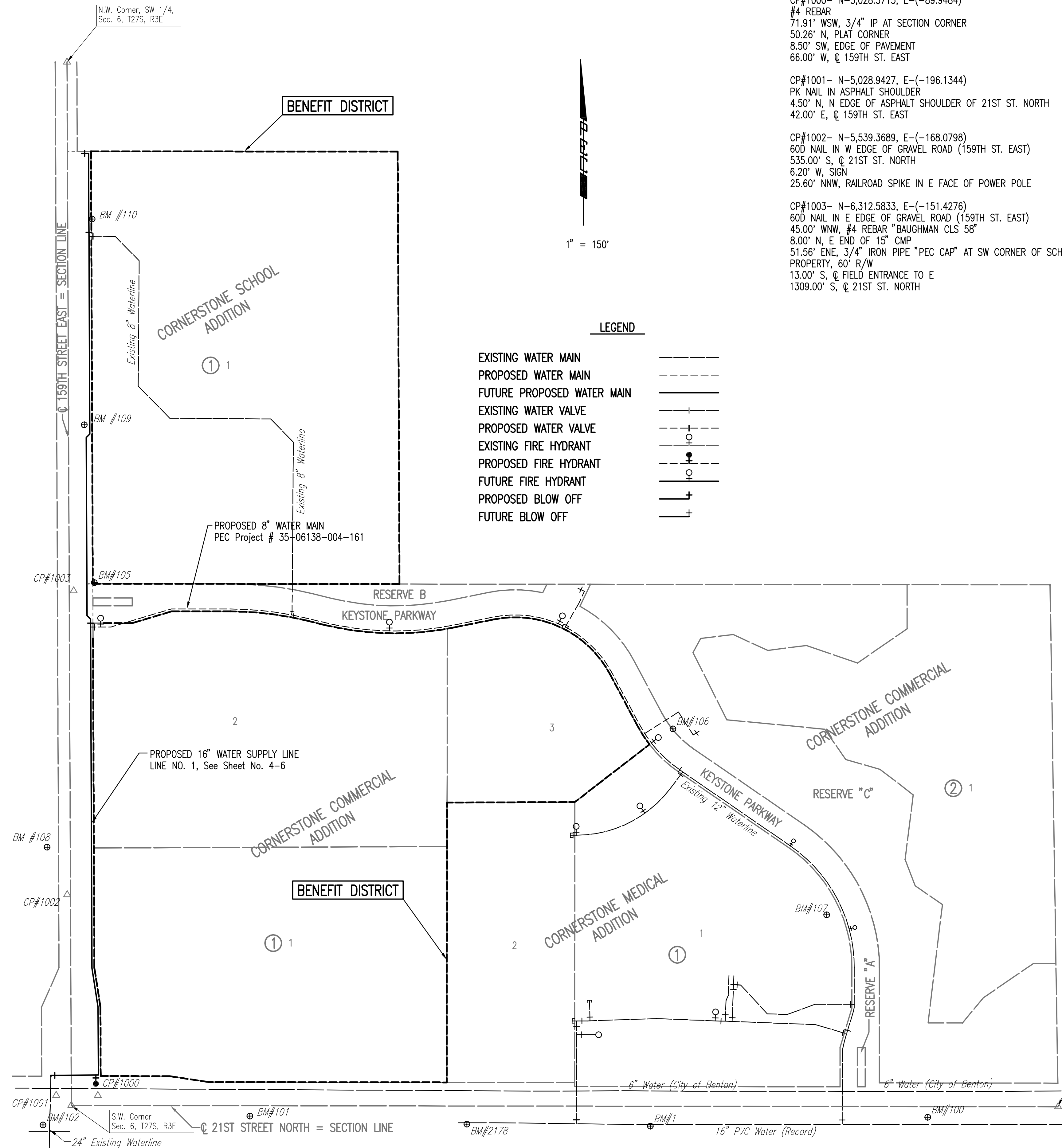
CP#1003- N-6,312.5833, E-(-151.4276)
60D NAIL IN E EDGE OF GRAVEL ROAD (159TH ST. EAST)
45.00' WNW, #4 REBAR "BAUGHMAN CLS 58"
8.00' N, E END OF 15" CMP
51.56' ENE, 3/4" IRON PIPE "PEC CAP" AT SW CORNER OF SCHOOL PROPERTY, 60' R/W
13.00' S, \odot FIELD ENTRANCE TO E
1309.00' S, \odot 21ST ST. NORTH



1" = 150'

LEGEND

- EXISTING WATER MAIN
- PROPOSED WATER MAIN
- FUTURE PROPOSED WATER MAIN
- EXISTING WATER VALVE
- PROPOSED WATER VALVE
- EXISTING FIRE HYDRANT
- PROPOSED FIRE HYDRANT
- FUTURE FIRE HYDRANT
- PROPOSED BLOW OFF
- FUTURE BLOW OFF



BENCHMARKS \odot BM#1

BM #1- CHISELED "v", ON THE TOP OF A CURB, ON THE N END OF THE MEDIAN IN QUAIL CROSSING STREET, ON THE S SIDE OF 21ST ST. N. ELEV. = 1355.93

BM #80- (NOT SHOWN) DATUM BM, CHISELED "v" ON THE CENTER OF THE TOP OF THE S HEADWALL RCB UNDER 21ST ST. NORTH, 200' E OF THE S 1/4 CORNER SEC. 6, T27S, R3E, 1/2 MILE W OF ANDOVER ROAD, S SIDE 21ST ST. NORTH. ELEV. = 1345.60

BM #81- (NOT SHOWN) CHISELED "v" AT THE SE CORNER OF THE CURB INLET, ON THE S SIDE OF 21ST ST. NORTH, 250' E OF THE S 1/4 CORNER SEC. 6, T27S, R3E. ELEV. = 1346.45

BM #100- CHISELED "v" IN THE TOP OF THE S CURB OF 21ST ST. N, N OF A POWER POLE, 700' E OF QUAIL CROSSING, 300' W OF THE S 1/4 CORNER SEC. 6, T27S, R3E. ELEV. = 1349.33

BM #101- CHISELED "v" IN THE TOP OF THE S CURB OF 21ST ST. N, N OF A POWER POLE, CREST OF A HILL, 450' E OF THE CENTERLINE OF 159TH ST. EAST. ELEV. = 1372.64

BM #102- 60D STEP, E FACE OF A POWER POLE, SW OF THE INTERSECTION OF 21ST ST. N & 159TH ST. E. ELEV. = 1370.26

BM #105- TOP OF 'T' POST, 5' NE OF THE SW CORNER OF LOT 1, BLOCK 1, CORNERSTONE SCHOOL ADDITION, 64' E OF THE W LINE OF SEC. 6, T27S, R3E, 1330' N OF THE \odot OF 21ST ST. N, ON THE E SIDE OF 159TH ST. EAST. ELEV. = 1363.41

BM #106- TOP OF 'T' POST, 5' SE OF THE PLAT CORNER FOR CORNERSTONE SCHOOL ADDITION, ON THE NE R/W LINE FOR KEYSTONE PARKWAY, 70' NE OF THE NORTHERN MOST CORNER FOR LOT 1, BLOCK 1, CORNERSTONE MEDICAL ADDITION, 960' N OF THE \odot OF 21ST ST. N, 1530' E OF THE \odot OF 159TH ST. E. ELEV. = 1351.52

BM #107- CHISELED "d" IN THE E EDGE OF THE TOP OF THE LIGHT POLE BASE, E SIDE OF THE MEDICAL CLINIC, ON THE N SIDE OF THE PARKING LOT ENTRANCE, 490' N OF THE \odot OF 21ST ST. N, 1920' E OF THE \odot OF 159TH ST. E, ON THE W SIDE OF KEYSTONE PARKWAY. ELEV. = 1353.74

BM #108- T-POST 5' N OF 3RD POWER POLE N OF 21ST ST. N ON W SIDE 159TH ST. E. ELEV. = 1369.44

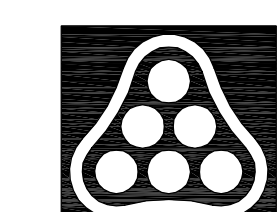
BM #109- CHISELED "d" ON TOP OF THE CURB W ON THE WEST END OF THE CONCRETE MEDIAN OF THE S ENTRANCE CORNER STONE ELEMENTARY SCHOOL. ELEV. = 1363.65

BM #110- CHISELED "d" ON THE TOP OF THE W SIDE CONCRETE LIGHT BASE, LOCATED ON THE N SIDE OF THE N ELEMENTARY SCHOOL ENTRANCE, 80' \pm E OF THE \odot OF 159TH ST. ELEV. = 1367.13

BM #111- (NOT SHOWN) T-POST ON THE E EDGE OF 159TH ST. E, N OF THE W 1/4 CORNER SECTION, 0.5' N OF THE E END OF THE CROSS ROAD CULVERT PIPE. ELEV. = 1364.14

BM #2178- 60D STEP, N FACE OF POWER POLE, S SIDE OF 21ST ST. NORTH, 467' W OF \odot OF QUAIL CROSSING STREET. ELEV. = 1364.42

SEE SHEET NO. 7, 8 & 9 FOR PLAT COORDINATES



No.	Revision	By	Date
CORNERSTONE COMMERCIAL AND SCHOOL ADDITIONS WATER SUPPLY LINE			
KEY MAP AND GENERAL NOTES			
CITY OF WICHITA PRIVATE PROJECT NO. 1246 PWP (607853) CITY OF WICHITA CITY ENGINEER - JAMES L. ARMOUR, P.E.			
Professional Engineering Consultants, P.A. 303 S. TOPKA • WICHITA, KANSAS 67202 316-262-2691 • FAX 316-262-3003			
Designed by	EJB	Job No.	35-06138-003
Drawn by		Date	APRIL 2006
			Sht. 2 of 12