

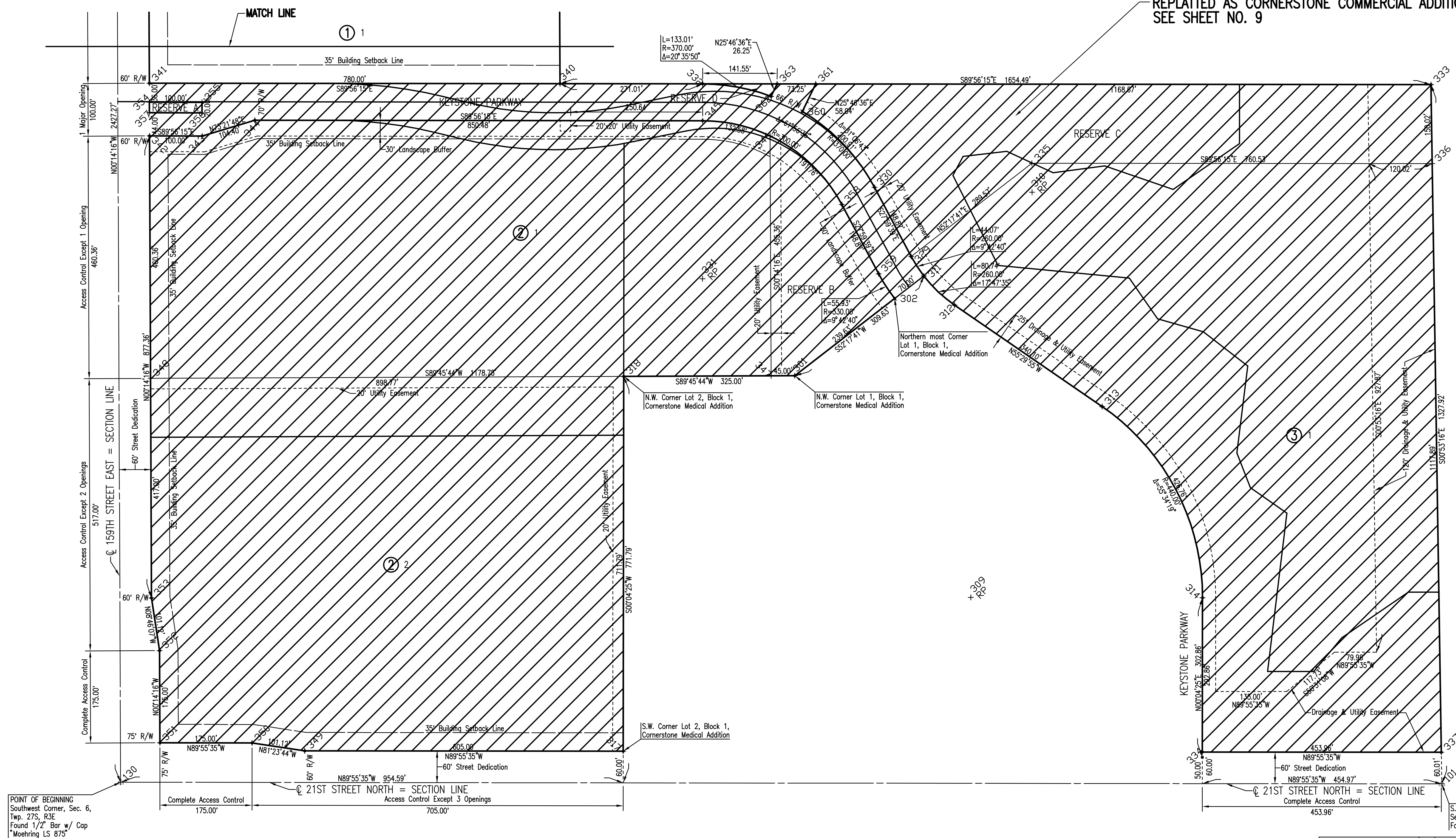
CORNERSTONE SCHOOL ADDITION

AN ADDITION TO ANDOVER, BUTLER COUNTY, KANSAS

REPLATTED AS CORNERSTONE COMMERCIAL ADDITION
SEE SHEET NO. 9

SCALE: 1" = 100'

LEGEND
 • Set 3/4" Iron Pipe w/ PEC Cap
 △ Section Corner



POINT OF BEGINNING
 Southwest Corner, Sec. 6,
 Twp. 27S, R3E
 Found 1/2" Bar w/ Cap
 Moehring LS 875

S.E. Corner, SW 1/4,
 Sec. 6, Twp. 27S, R3E
 Found Rectangular Iron Bar

Sowed 02-08-2007 1:40:06 PM by JAW
 Plot Scale 1:100 02-08-2007 3:13:38 PM by BEJ
 J:\SENTOU\2006\06138\2007-02-08 to City of Wichita Water Supply\DWG\08-Cornerstone School Addition02

No.	Revision	By	Date
CORNERSTONE COMMERCIAL AND SCHOOL ADDITIONS WATER SUPPLY LINE			
CORNERSTONE SCHOOL ADDITION			
CITY OF WICHITA PRIVATE PROJECT NO. 1246 PPW (607853) CITY OF WICHITA CITY ENGINEER - JAMES L. ARMOUR, P.E.			
Professional Engineering Consultants, P.A. 303 S. TOPEKA • WICHITA, KANSAS 67202 316-262-2691 • FAX 316-262-3003			
Designed by	EJB	Job No.	35-06138-003
Drawn by		Date	APRIL 2006
			Sht. 8 of 12

