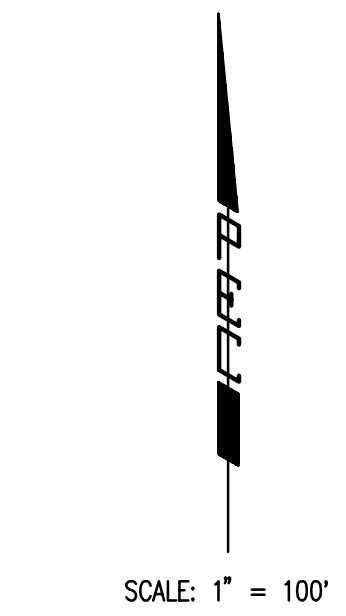
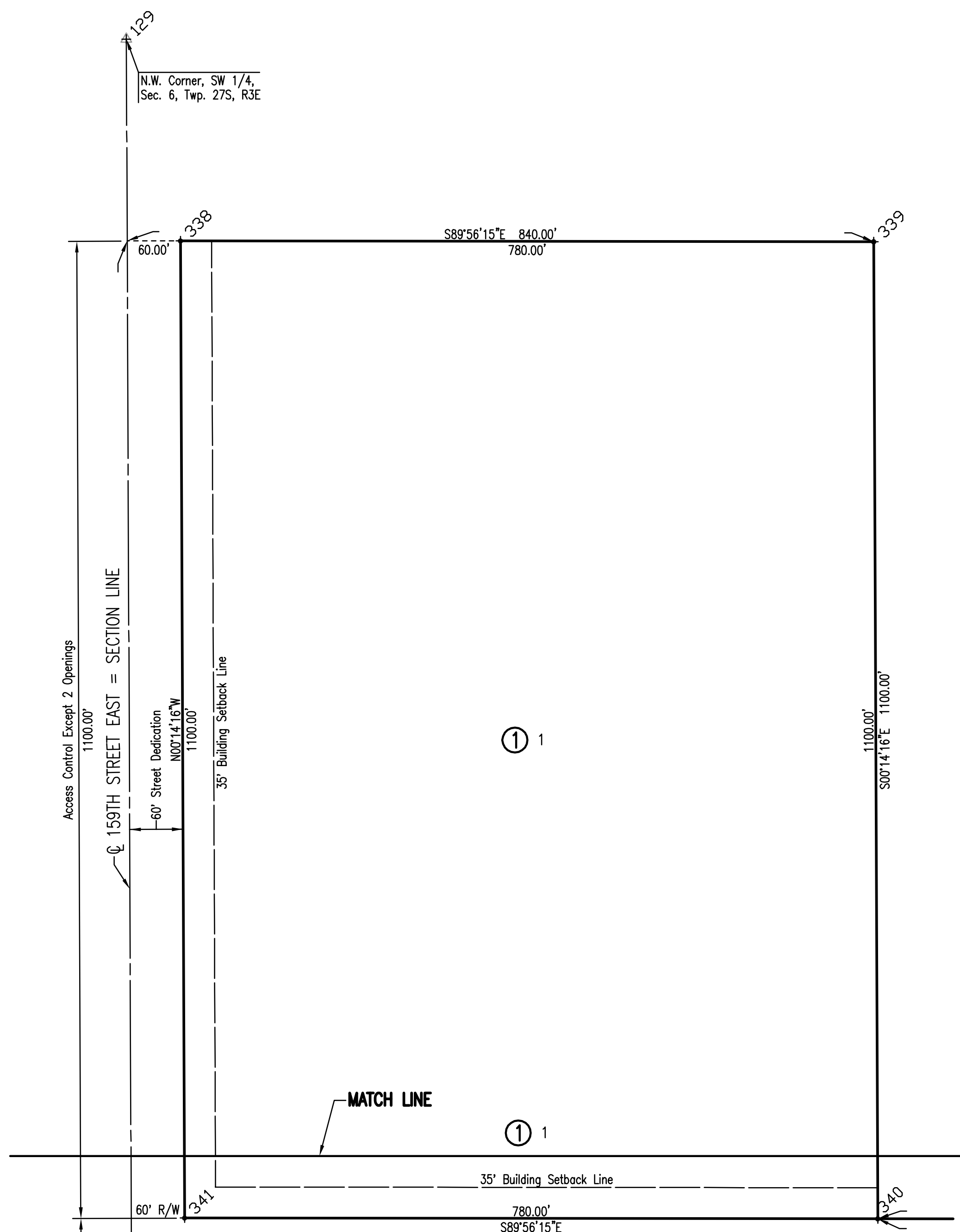


# CORNERSTONE SCHOOL ADDITION

AN ADDITION TO ANDOVER, BUTLER COUNTY, KANSAS

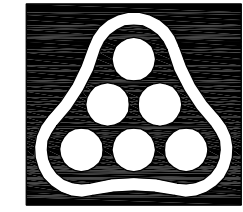


**LEGEND**

- Set 3/4" Iron Pipe w/ PEC Cap
- △ Section Corner

COORDINATE LIST		
POINT	NORTH	EAST
101	5000.0000	2352.2000
129	7657.5890	-168.3720
130	5003.2220	-157.3570
301	5775.1363	1123.2287
302	5921.6974	1312.8198
309	5354.0038	1457.6883
310	6123.5257	1573.9047
311	5964.5094	1368.2014
312	5909.2567	1426.6335
313	5716.6129	1706.9164
314	5353.4389	1897.6879
317	5061.9964	797.3128
318	5773.7876	798.2267
329	6001.4863	1344.3260
330	6132.9401	1274.4478
331	5959.2686	947.7396
332	6329.2684	948.1433
333	6327.7588	2331.6252
334	5060.5841	1897.3119
335	6178.5860	1573.4219
336	6177.7562	2333.9496
337	5060.0012	2351.2702
338	7430.4056	-107.4287
339	7429.5546	672.5670
340	6329.5641	677.1347
341	6330.4151	-102.8640
342	6230.4146	-102.4490
343	6230.3055	-2.4491
344	6260.1964	97.5836
345	6259.2684	948.0670
346	6230.3075	1076.3394
347	5774.9496	1078.2291
348	5770.0580	-100.5387
349	5062.7731	192.3133
350	5077.9015	92.3327
351	5078.1262	-82.6672
352	5253.1247	-83.3934
353	5353.0616	-98.8082
354	6294.4149	-102.7146
355	6294.3058	-2.7133
356	6274.3057	-2.6303
357	6274.4148	-102.6316
358	6100.0833	1212.6381
359	5968.6295	1282.5163
360	6276.7735	1137.7150
361	6329.0340	1162.9525
362	6305.4746	1078.2823
363	6329.1139	1089.6981

S:\02-08-2007 2:00:26 PM by JAN  
 Plot Scale 1:100 02-08-2007 3:04:59 PM by BEJ  
 J:\SEN\01\2006\06138\2007-02-08 to City of Wichita Water Distribution\DWG\08-Cornerstone School Addition01



No.	Revision	By	Date
CORNERSTONE COMMERCIAL AND SCHOOL ADDITIONS WATER DISTRIBUTION IMPROVEMENTS <b>CORNERSTONE SCHOOL ADDITION</b> CITY OF WICHITA PRIVATE PROJECT NO. 1247 PPW (607853) CITY OF WICHITA CITY ENGINEER - JAMES L. ARMOUR, P.E. <b>Professional Engineering Consultants, P.A.</b> 303 S. TOPEKA • WICHITA, KANSAS 67202 316-262-2691 • FAX 316-262-3003			
Designed by	EJB	Job No.	35-06138-004
Drawn by		Date	APRIL 2006