

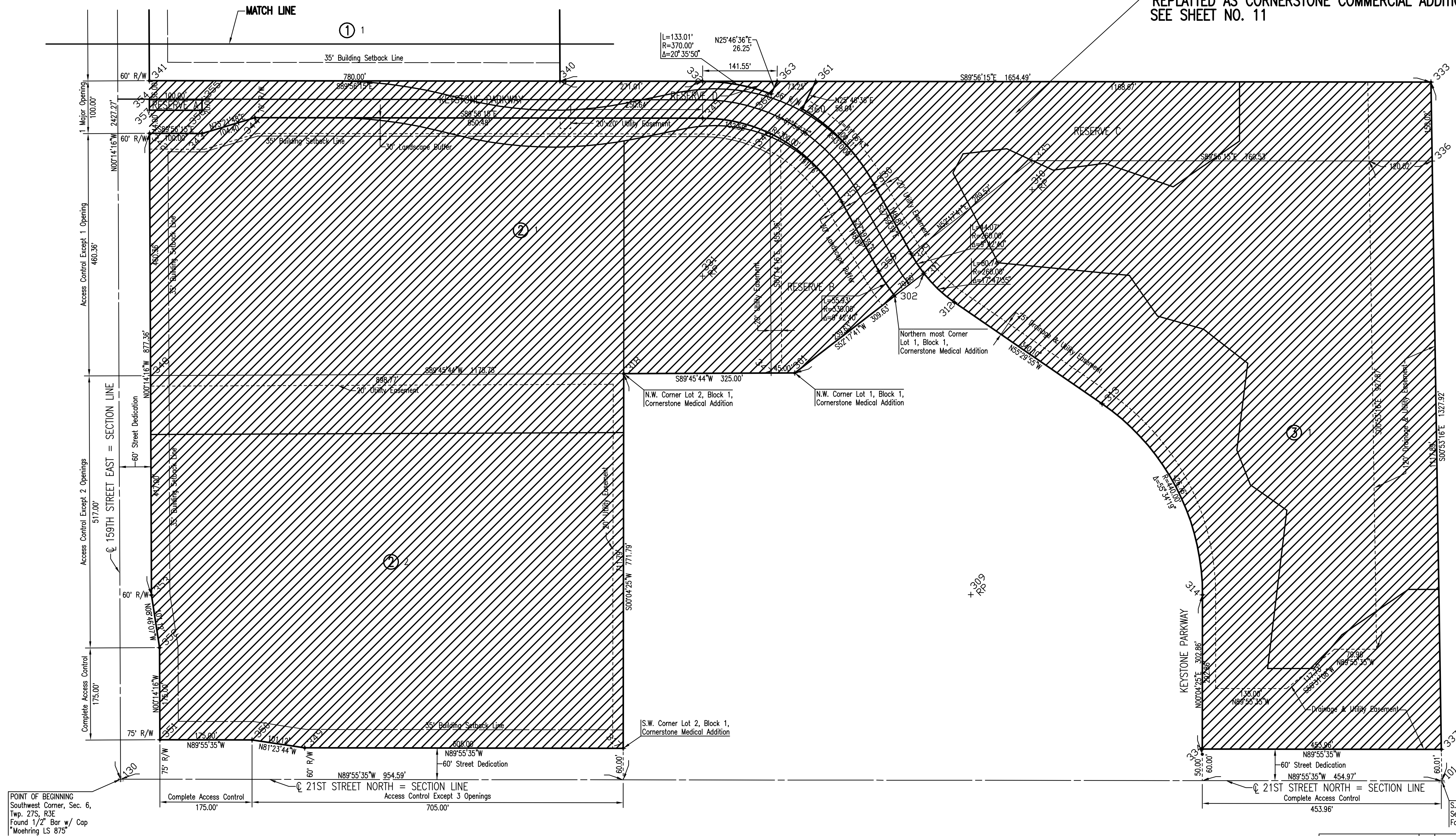
# CORNERSTONE SCHOOL ADDITION

AN ADDITION TO ANDOVER, BUTLER COUNTY, KANSAS

REPLATTED AS CORNERSTONE COMMERCIAL ADDITION  
SEE SHEET NO. 11

SCALE: 1" = 100'

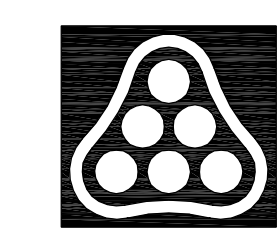
**LEGEND**  
 • Set 3/4" Iron Pipe w/ PEC Cap  
 △ Section Corner



POINT OF BEGINNING  
 Southwest Corner, Sec. 6,  
 Twp. 27S, R3E  
 Found 1/2" Bar w/ Cap  
 Moehring LS 875

S.E. Corner, SW 1/4,  
 Sec. 6, Twp. 27S, R3E  
 Found Rectangular Iron Bar

Saved: 02-08-2007 2:01:16 PM by: JAW  
 Plot Scale: 1:100 02-08-2007 3:03:10 PM by: BEJ  
 J:\SEN\001\2006\06138\2007-02-08 to City of Wichita Water Distribution\DWG\09-Cornerstone School Addition.dwg



No.	Revision	By	Date
CORNERSTONE COMMERCIAL AND SCHOOL ADDITIONS WATER DISTRIBUTION IMPROVEMENTS <b>CORNERSTONE SCHOOL ADDITION</b> CITY OF WICHITA PRIVATE PROJECT NO. 1247 PPW (607853) CITY OF WICHITA CITY ENGINEER - JAMES L. ARMOUR, P.E. <b>Professional Engineering Consultants, P.A.</b> 303 S. TOPEKA • WICHITA, KANSAS 67202 316-262-2691 • FAX 316-262-3003			
Designed by	EJB	Job No.	35-06138-004
Drawn by		Date	APRIL 2006
			Sht. 9 of 14