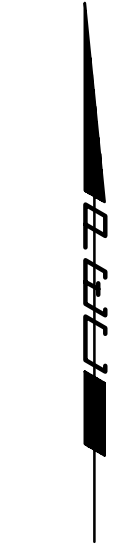


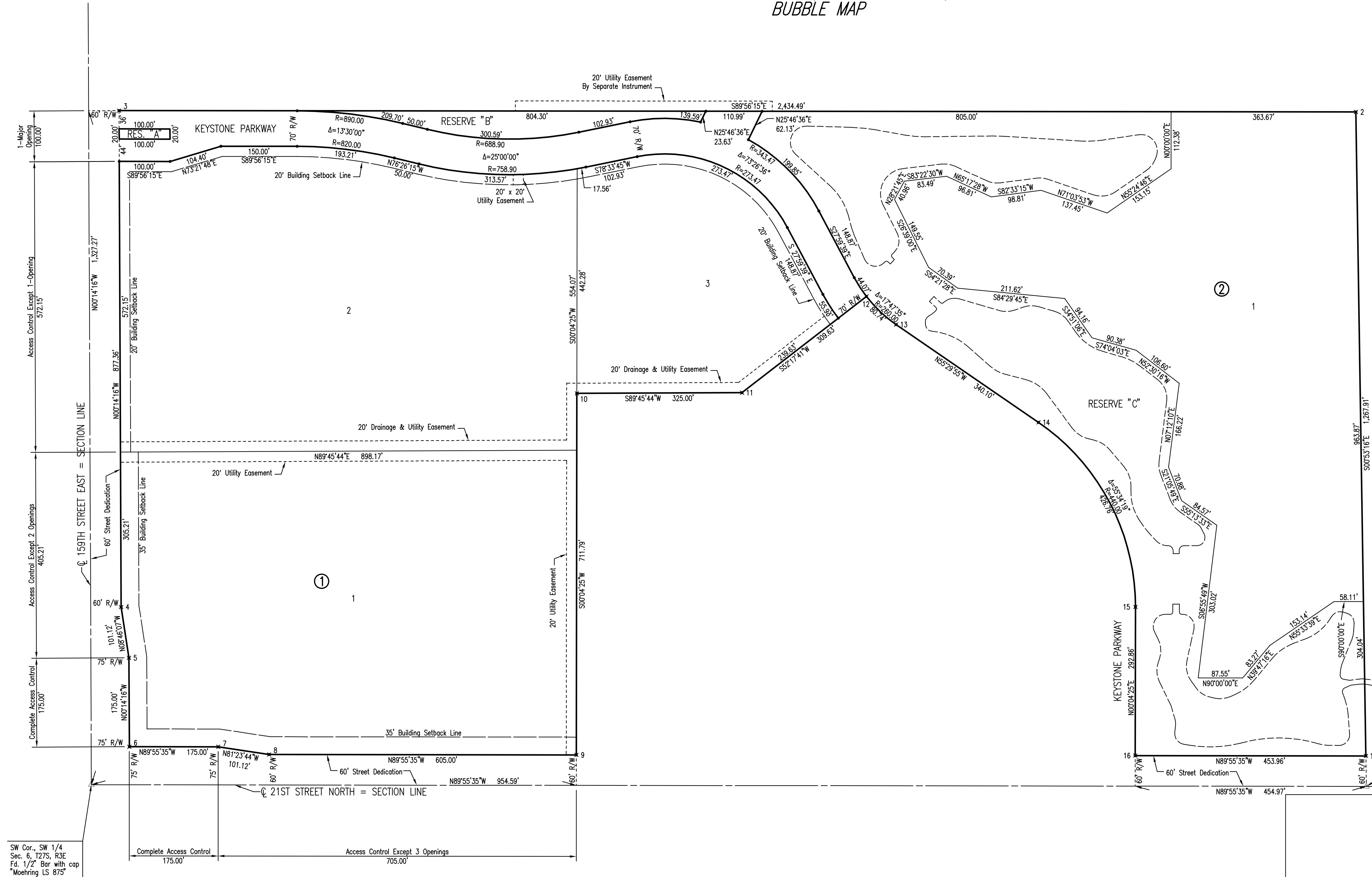
FINAL PLANNED UNIT DEVELOPMENT  
OF THE FOURTH PHASE OF THE DECKER/KISER GENERAL PLANNED UNIT DEVELOPMENT  
A PORTION OF THE SOUTHWEST QUARTER, SECTION 6, TOWNSHIP 27 SOUTH RANGE 3 EAST, OF THE 6TH PRINCIPAL MERIDIAN  
**CORNERSTONE COMMERCIAL ADDITION**  
AN ADDITION TO ANDOVER, BUTLER COUNTY, KANSAS  
BUBBLE MAP



SCALE: 1" = 100'

- = 1/2" REBAR W/PEC CAP UNLESS OTHERWISE NOTED
- △ = SECTION CORNER

COORDINATE LIST		
POINT	NORTH	EAST
1	5060.001289	2351.270221
2	6321.788447	2331.625167
3	6330.415105	-102.864023
4	5353.061554	-98.808235
5	5253.124661	-83.393392
6	5078.126188	-82.667189
7	5077.901487	92.332667
8	5062.773111	192.313326
9	5061.996357	797.312827
10	5773.787629	798.226690
11	5775.136311	1123.228690
12	5964.509431	1368.201442
13	5909.256746	1426.633482
14	5716.612898	1706.916434
15	5353.438932	1897.687915
16	5060.584114	1897.311921



S 1/4 Cor.  
Sec. 6, T27S, R3E  
Found Rectangular  
Iron Bar

Served 02-08-2007 2:04:06 PM by JAW  
 Plot Scale 1:100 02-08-2007 3:02:10 PM by BEJ  
 J:\SENT\01\2006\06\138\2007-02-08 to City of Wichita Water Distribution\DWG\11-Cornerstone Commercial Addition

SW Cor., SW 1/4  
Sec. 6, T27S, R3E  
Fd. 1/2" Bar with cap  
Moehring LS 875"

No.	Revision	By	Date
CORNERSTONE COMMERCIAL AND SCHOOL ADDITIONS WATER DISTRIBUTION IMPROVEMENTS <b>CORNERSTONE COMMERCIAL ADDITION</b> CITY OF WICHITA PRIVATE PROJECT NO. 1247 PPW (607853) CITY OF WICHITA CITY ENGINEER - JAMES L. ARMOUR, P.E. <b>Professional Engineering Consultants, P.A.</b> 303 S. TOPKA • WICHITA, KANSAS 67202 316-262-2691 • FAX 316-262-3003			
Designed by	EJB	Job No.	35-06138-004
Drawn by		Date	APRIL 2006
			SHL 11 of 14

