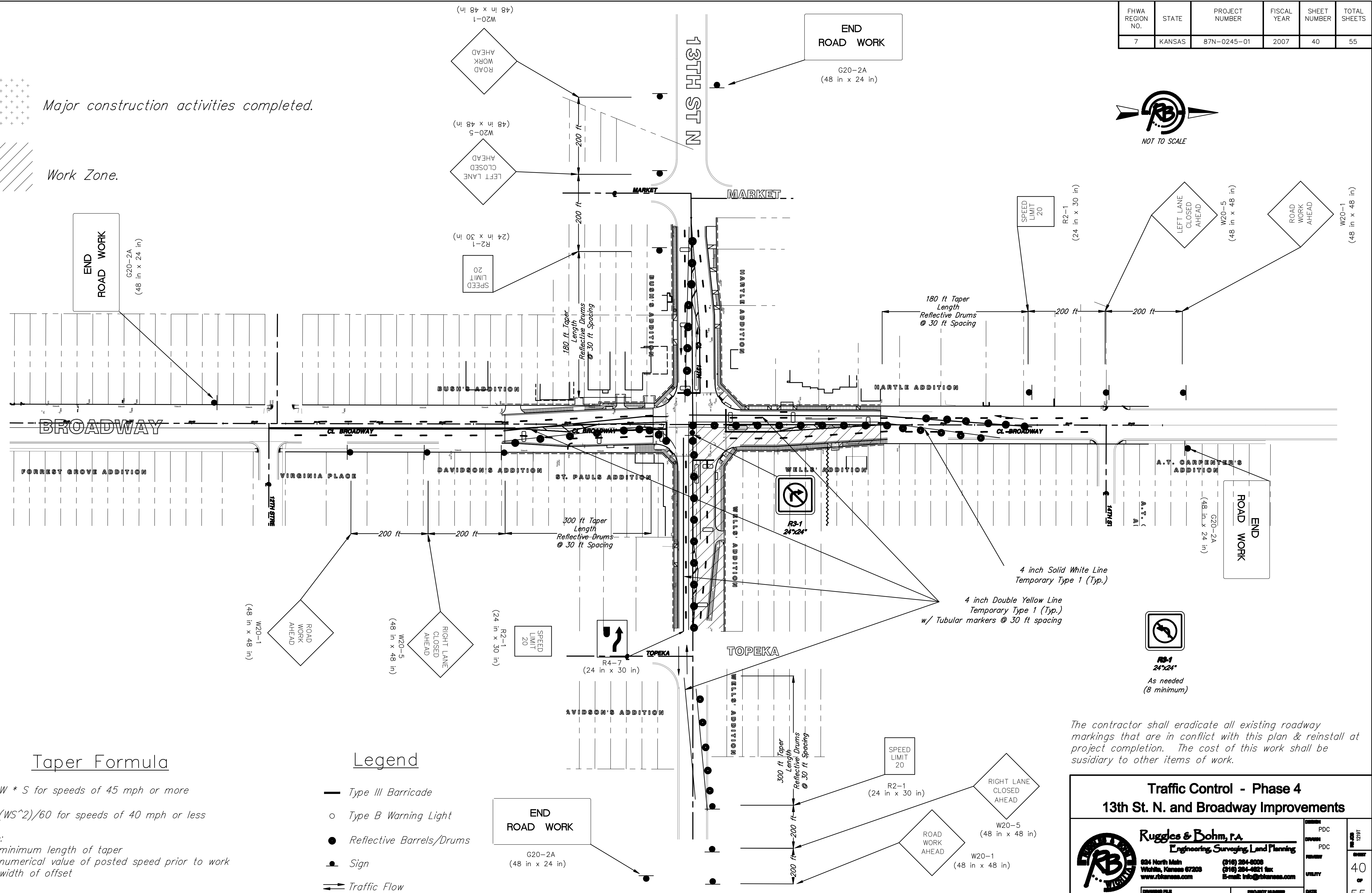
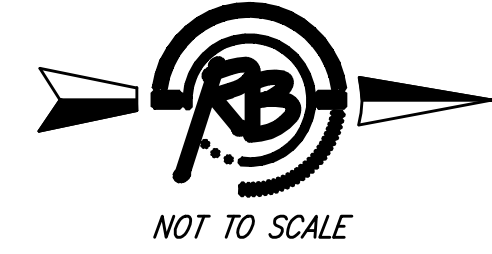


FHWA REGION NO.	STATE	PROJECT NUMBER	FISCAL YEAR	SHEET NUMBER	TOTAL SHEETS
7	KANSAS	87N-0245-01	2007	40	55

 Major construction activities completed.

 Work Zone.


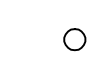


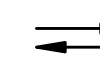


Taper Formula

$L = W * S$ for speeds of 45 mph or more
 $L = (WS^2)/60$ for speeds of 40 mph or less


Where:
 L = minimum length of taper
 S = numerical value of posted speed prior to work
 W = width of offset

Legend

-  Type III Barricade
-  Type B Warning Light
-  Reflective Barrels/Drums
-  Sign
-  Traffic Flow

The contractor shall eradicate all existing roadway markings that are in conflict with this plan & reinstall at project completion. The cost of this work shall be subsidiary to other items of work.

Traffic Control - Phase 4
13th St. N. and Broadway Improvements



Ruggles & Bohm, P.A.
 Engineering, Surveying, Land Planning

624 North Main
 Wichita, Kansas 67208
 www.rbgkansas.com

(316) 264-8008
 (316) 264-4621 fax
 E-mail: info@rbkansas.com

DESIGN	PDC
DRAWN	PDC
CHECKED	
UTILITY	

DATE: Oct. 11, 2004

ISSUED FILE: Traffic Control\Phase 1b

PROJECT NUMBER: City No. 706705

40
of
55