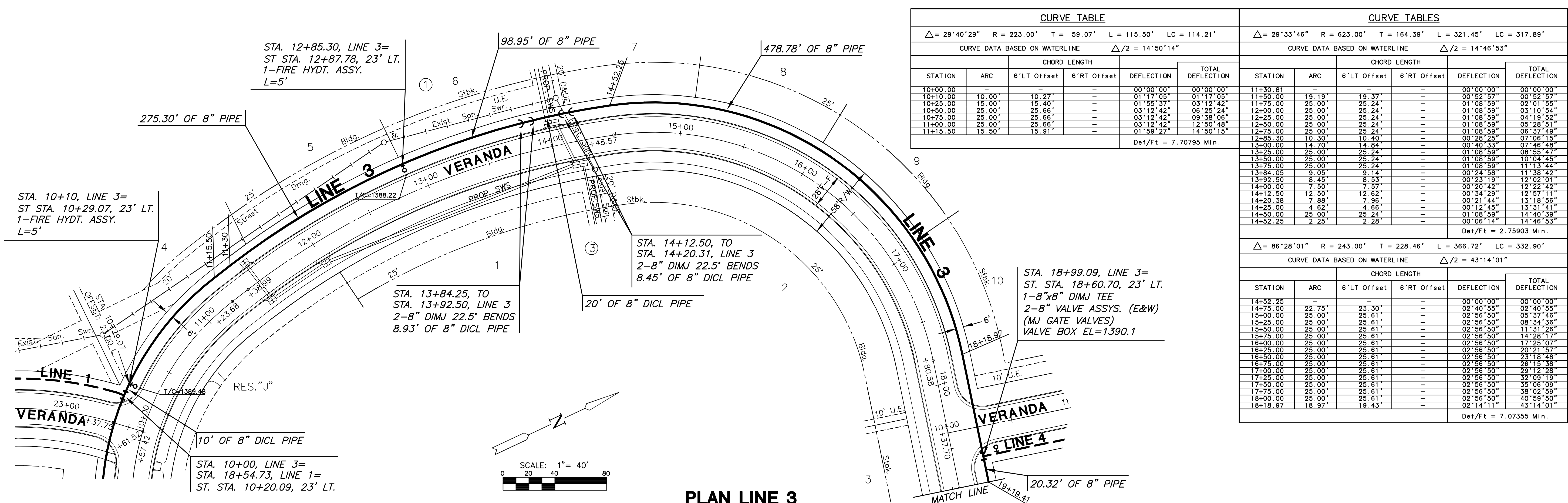


**WATER DISTRIBUTION SYSTEM  
THE WATERFRONT  
RESIDENTIAL ADDITION**



**CURVE TABLE**

$\Delta = 29^{\circ}40'29''$  R = 223.00' T = 59.07' L = 115.50' LC = 114.21'

CURVE DATA BASED ON WATERLINE  $\Delta/2 = 14^{\circ}50'14''$

STATION	ARC	CHORD LENGTH		DEFLECTION	TOTAL DEFLECTION
		6'LT Offset	6'RT Offset		
10+00.00	-	-	-	00°00'00"	00°00'00"
10+10.00	10.00'	10.27'	-	01°17'05"	01°17'05"
10+25.00	15.00'	15.40'	-	01°55'37"	03°12'42"
10+50.00	25.00'	25.66'	-	03°12'42"	06°25'24"
10+75.00	25.00'	25.66'	-	03°12'42"	09°38'06"
11+00.00	25.00'	25.66'	-	03°12'42"	12°50'48"
11+15.50	15.50'	15.91'	-	01°59'27"	14°50'15"

Def/Ft = 7.70795 Min.

**CURVE TABLES**

$\Delta = 29^{\circ}33'46''$  R = 623.00' T = 164.39' L = 321.45' LC = 317.89'

CURVE DATA BASED ON WATERLINE  $\Delta/2 = 14^{\circ}46'53''$

STATION	ARC	CHORD LENGTH		DEFLECTION	TOTAL DEFLECTION
		6'LT Offset	6'RT Offset		
11+30.81	-	-	-	00°00'00"	00°00'00"
11+50.00	19.19'	19.37'	-	00°52'57"	00°52'57"
11+75.00	25.00'	25.24'	-	01°08'59"	02°01'56"
12+00.00	25.00'	25.24'	-	01°08'59"	03°10'54"
12+25.00	25.00'	25.24'	-	01°08'59"	04°19'52"
12+50.00	25.00'	25.24'	-	01°08'59"	05°28'51"
12+75.00	25.00'	25.24'	-	01°08'59"	06°37'49"
12+85.30	10.30'	10.40'	-	00°28'25"	07°06'15"
13+00.00	14.70'	14.84'	-	00°40'33"	07°46'48"
13+25.00	25.00'	25.24'	-	01°08'59"	08°55'47"
13+50.00	25.00'	25.24'	-	01°08'59"	10°04'45"
13+75.00	25.00'	25.24'	-	01°08'59"	11°13'44"
13+84.05	9.05'	9.14'	-	00°24'58"	11°38'42"
13+92.50	8.45'	8.53'	-	00°23'19"	12°02'01"
14+00.00	7.50'	7.57'	-	00°20'42"	12°22'42"
14+12.50	12.50'	12.82'	-	00°34'29"	12°57'11"
14+20.38	7.88'	7.96'	-	00°21'44"	13°18'56"
14+25.00	4.62'	4.66'	-	00°12'45"	13°31'41"
14+50.00	25.00'	25.24'	-	01°08'59"	14°40'59"
14+52.25	2.25'	2.28'	-	00°06'14"	14°46'53"

Def/Ft = 2.75903 Min.

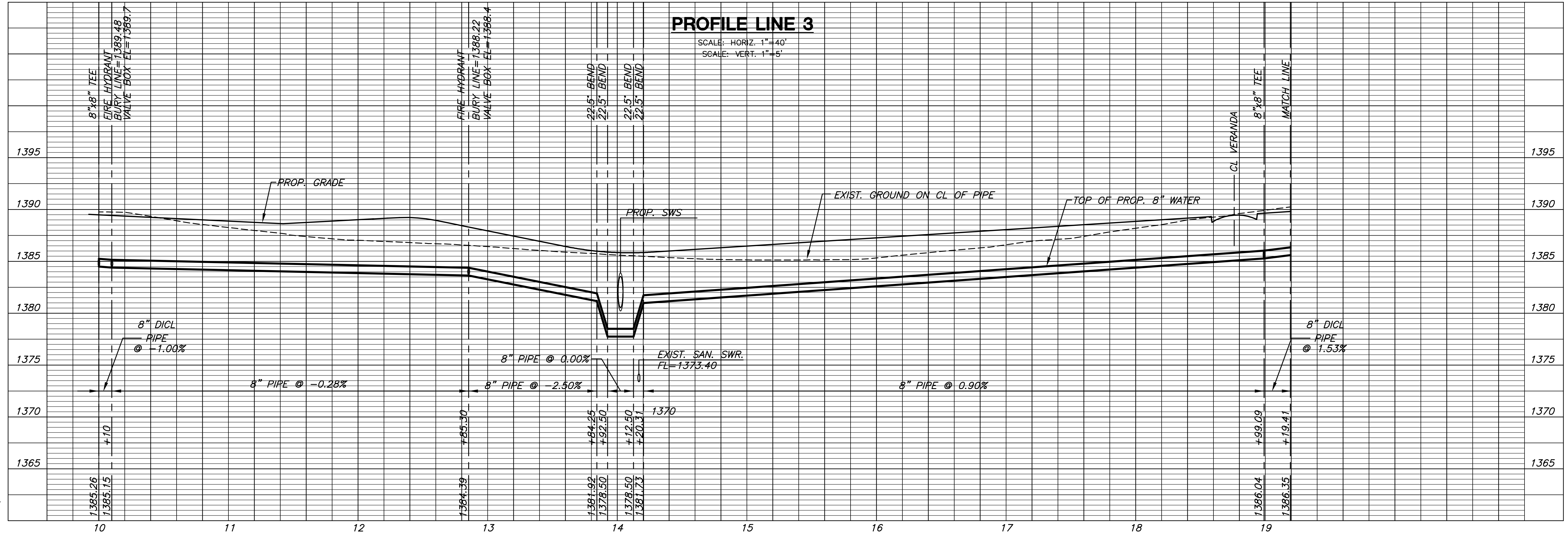
$\Delta = 86^{\circ}28'01''$  R = 243.00' T = 228.46' L = 366.72' LC = 332.90'

CURVE DATA BASED ON WATERLINE  $\Delta/2 = 43^{\circ}14'01''$

STATION	ARC	CHORD LENGTH		DEFLECTION	TOTAL DEFLECTION
		6'LT Offset	6'RT Offset		
14+52.25	-	-	-	00°00'00"	00°00'00"
14+75.00	22.75'	23.30'	-	02°40'59"	02°40'59"
15+00.00	25.00'	25.61'	-	02°56'50"	05°37'46"
15+25.00	25.00'	25.61'	-	02°56'50"	08°34'36"
15+50.00	25.00'	25.61'	-	02°56'50"	11°31'26"
15+75.00	25.00'	25.61'	-	02°56'50"	14°28'17"
16+00.00	25.00'	25.61'	-	02°56'50"	17°25'07"
16+25.00	25.00'	25.61'	-	02°56'50"	20°21'57"
16+50.00	25.00'	25.61'	-	02°56'50"	23°18'48"
16+75.00	25.00'	25.61'	-	02°56'50"	26°15'38"
17+00.00	25.00'	25.61'	-	02°56'50"	29°12'28"
17+25.00	25.00'	25.61'	-	02°56'50"	32°09'19"
17+50.00	25.00'	25.61'	-	02°56'50"	35°06'09"
17+75.00	25.00'	25.61'	-	02°56'50"	38°02'59"
18+00.00	25.00'	25.61'	-	02°56'50"	40°59'50"
18+18.97	18.97'	19.43'	-	02°14'11"	43°14'01"

Def/Ft = 7.07355 Min.

**PLAN LINE 3**



**PROFILE LINE 3**

**LINE 3**  
SHEET TITLE  
448-90329  
PROJECT NUMBER

DFL  
DESIGN BY  
KKL  
DRAWN BY  
GJA  
CHECKED BY

ISSUED  
December 2007  
REVISED

SHEET NO.  
6 of 18

PLOTTED: Tuesday, December 04, 2007 @ 02:59PM

J:\CIVIL\06266\WDR\RESIDENTIAL\06266\_C4.DWG