

**CURVE TABLES**

$\Delta = 21^\circ 01' 29''$  R = 623.00' T = 115.61' L = 228.61' LC = 227.33'

CURVE DATA BASED ON WATERLINE  $\Delta/2 = 10^\circ 30' 45''$

STATION	ARC	CHORD LENGTH		DEFLECTION	TOTAL DEFLECTION
		6'LT Offset	6'RT Offset		
22+40.79	-	-	-	00°00'00"	00°00'00"
22+50.00	9.21'	9.30'	-	00°25'25"	00°25'25"
22+75.00	25.00'	25.24'	-	01°08'59"	01°34'23"
23+00.00	25.00'	25.24'	-	01°08'59"	02°43'22"
23+25.00	25.00'	25.24'	-	01°08'59"	03°52'20"
23+50.00	25.00'	25.24'	-	01°08'59"	05°01'19"
23+75.00	25.00'	25.24'	-	01°08'59"	06°10'17"
24+00.00	25.00'	25.24'	-	01°08'59"	07°19'16"
24+25.00	25.00'	25.24'	-	01°08'59"	08°28'14"
24+50.00	25.00'	25.24'	-	01°08'59"	09°37'13"
24+69.40	19.40'	19.59'	-	00°53'32"	10°30'45"

Def/Ft = 2.75903 Min.

$\Delta = 59^\circ 09' 50''$  R = 313.00' T = 177.68' L = 323.21' LC = 309.04'

CURVE DATA BASED ON WATERLINE  $\Delta/2 = 29^\circ 34' 55''$

STATION	ARC	CHORD LENGTH		DEFLECTION	TOTAL DEFLECTION
		6'LT Offset	6'RT Offset		
24+69.40	-	-	-	00°00'00"	00°00'00"
24+75.00	5.60'	5.71'	-	00°30'45"	00°30'45"
25+00.00	25.00'	25.47'	-	02°17'17"	02°48'03"
25+22.33	22.33'	22.75'	-	02°02'38"	04°50'40"
25+25.00	2.67'	2.72'	-	00°14'40"	05°05'20"
25+36.04	11.04'	11.25'	-	01°00'38"	06°05'58"
25+50.00	13.96'	14.23'	-	01°16'40"	07°22'37"
25+75.00	25.00'	25.47'	-	02°17'17"	09°39'56"
26+00.00	25.00'	25.47'	-	02°17'17"	11°57'12"
26+25.00	25.00'	25.47'	-	02°17'17"	14°14'30"
26+50.00	25.00'	25.47'	-	02°17'17"	16°31'47"
26+75.00	25.00'	25.47'	-	02°17'17"	18°49'04"
27+00.00	25.00'	25.47'	-	02°17'17"	21°06'22"
27+25.00	25.00'	25.47'	-	02°17'17"	23°23'39"
27+50.00	25.00'	25.47'	-	02°17'17"	25°40'57"
27+75.00	25.00'	25.47'	-	02°17'17"	27°58'14"
27+92.60	17.60'	17.94'	-	01°36'41"	29°34'55"

Def/Ft = 5.49161 Min.

$\Delta = 53^\circ 47' 07''$  R = 223.00' T = 113.10' L = 209.34' LC = 201.73'

CURVE DATA BASED ON WATERLINE  $\Delta/2 = 26^\circ 53' 34''$

STATION	ARC	CHORD LENGTH		DEFLECTION	TOTAL DEFLECTION
		6'LT Offset	6'RT Offset		
27+92.60	-	-	-	00°00'00"	00°00'00"
28+00.00	7.40'	7.60'	-	00°37'39"	00°37'39"
28+25.00	25.00'	25.66'	-	03°12'42"	04°09'44"
28+50.00	25.00'	25.66'	-	03°12'42"	07°22'26"
28+75.00	25.00'	25.66'	-	03°12'42"	10°35'08"
29+00.00	25.00'	25.66'	-	03°12'42"	13°47'50"
29+25.00	25.00'	25.66'	-	03°12'42"	17°00'32"
29+50.00	25.00'	25.66'	-	03°12'42"	20°13'14"
29+75.00	25.00'	25.66'	-	03°12'42"	23°25'56"
30+00.00	25.00'	25.66'	-	03°12'42"	26°38'38"
30+01.94	1.94'	1.99'	-	00°14'56"	26°53'33"

Def/Ft = 7.70795 Min.

**CURVE TABLE**

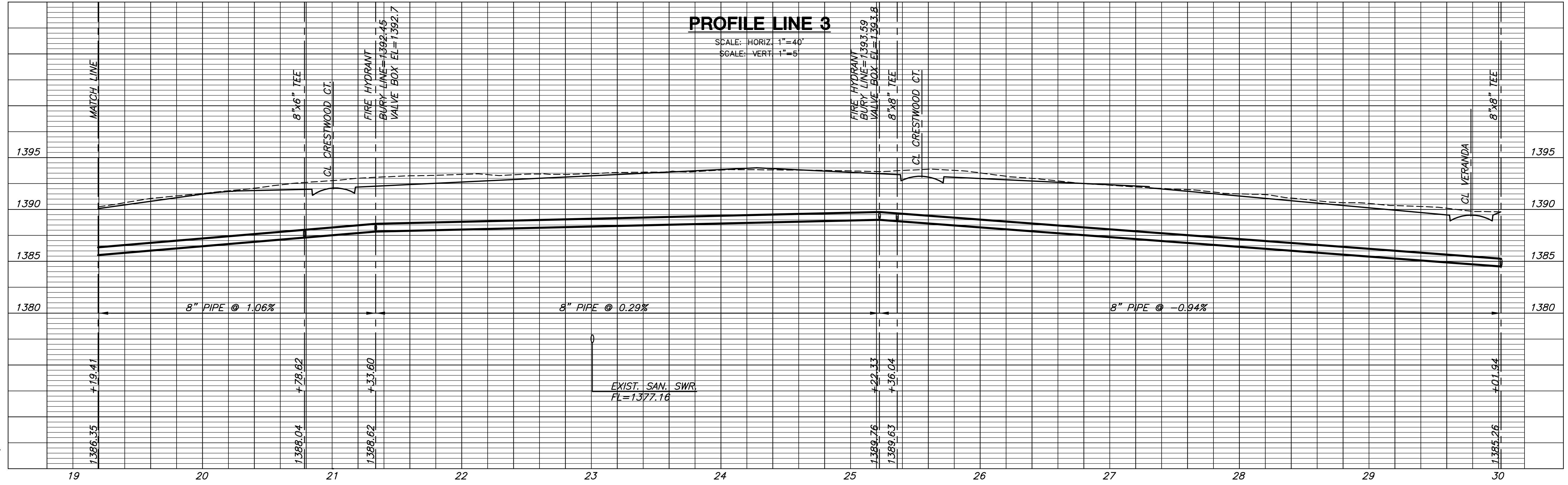
$\Delta = 80^\circ 19' 19''$  R = 203.00' T = 171.31' L = 284.58' LC = 261.84'

CURVE DATA BASED ON WATERLINE  $\Delta/2 = 40^\circ 09' 39''$

STATION	ARC	CHORD LENGTH		DEFLECTION	TOTAL DEFLECTION
		6'LT Offset	6'RT Offset		
19+19.41	-	-	-	00°00'00"	00°00'00"
19+25.00	5.59'	5.76'	-	00°47'20"	00°47'20"
19+50.00	25.00'	25.72'	-	03°31'41"	04°19'01"
19+75.00	25.00'	25.72'	-	03°31'41"	07°50'42"
20+00.00	25.00'	25.72'	-	03°31'41"	11°22'23"
20+25.00	25.00'	25.72'	-	03°31'41"	14°54'04"
20+50.00	25.00'	25.72'	-	03°31'41"	18°25'45"
20+75.00	25.00'	25.72'	-	03°31'41"	21°57'26"
20+78.62	3.62'	3.73'	-	00°30'39"	22°28'05"
21+00.00	21.38'	22.00'	-	03°01'02"	25°29'07"
21+25.00	25.00'	25.72'	-	03°31'41"	29°00'48"
21+33.60	8.60'	8.85'	-	01°12'49"	30°13'37"
21+50.00	16.40'	16.88'	-	02°18'52"	32°32'29"
21+75.00	25.00'	25.72'	-	03°31'41"	36°04'10"
22+00.00	25.00'	25.72'	-	03°31'41"	39°35'51"
22+03.99	3.99'	4.11'	-	00°33'48"	40°09'39"

Def/Ft = 8.46736 Min.

**PLAN LINE 3**



**PROFILE LINE 3**

**LINE 3**  
SHEET TITLE  
448-90329  
PROJECT NUMBER

DFL  
DESIGN BY  
KKL  
DRAWN BY  
GJA  
CHECKED BY

ISSUED  
December 2007  
REVISED

SHEET NO.  
7 of 18

PLOTTED: Tuesday, December 04, 2007 @ 02:59PM

J:\CIVIL\06266\DWG\WTR\RESIDENTIAL\06266\_CS.DWG