

STA. 10+00, LINE 7=  
STA. 25+36.04, LINE 3=  
ST. STA. 10+22.41, 19.2' LT.

BEND CHART				
NO.	8" BEND	STA.	BL. STA.	OFFSET, LT.
①	11.25'	10+43.27	10+68.61	20.5'
②	22.5'	10+93.91	11+27.65	20.5'
③	22.5'	11+44.33	11+86.42	20.5'

STA. 16+66.91, LINE 7=  
ST. STA. 17+00.14, 5.1' LT.  
1-8" ANCH. ASSY. (SPECIAL)  
(MJ GATE VALVE)  
VALVE BOX EL=1388.9

STA. 16+68.75, LINE 7=  
ST. STA. 117+01.96, 5.3' LT.  
DEF. PIPE 4'18'37", RIGHT

STA. 16+86.91, LINE 7=  
ST. STA. 17+19.95, 7.8' LT.  
1-2" BLOWOFF ASSY.

STA. 14+78.35, LINE 7=  
ST. STA. 15+12.14, 23' LT.  
DEF. PIPE 4'18'37", RIGHT

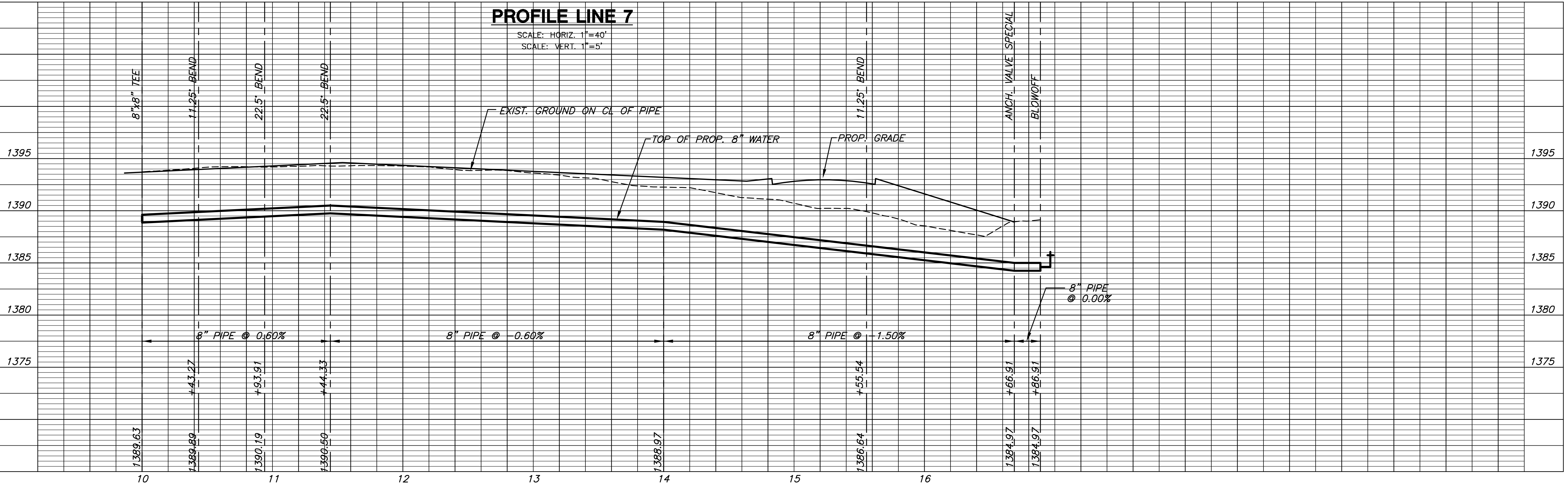
STA. 15+55.54, LINE 7=  
ST. STA. 15+89.1, 3.8' RT.  
1-8" DIMJ 11.25' BEND

CURVE TABLE					
$\Delta = 31^{\circ}07'57''$ R = 423.00' T = 117.84' L = 229.84' LC = 227.03'					
CURVE DATA BASED ON WATERLINE $\Delta/2 = 15^{\circ}33'59''$					
STATION	ARC	CHORD LENGTH		DEFLECTION	TOTAL DEFLECTION
		6' LT Offset	6' RT Offset		
11+69.65	-	-	-	00°00'00"	00°00'00"
11+75.00	5.35'	5.43'	-	00°21'44"	00°21'44"
12+00.00	25.00'	25.35'	-	01°41'35"	02°03'20"
12+25.00	25.00'	25.35'	-	01°41'35"	03°44'55"
12+50.00	25.00'	25.35'	-	01°41'35"	05°26'30"
12+75.00	25.00'	25.35'	-	01°41'35"	07°08'06"
13+00.00	25.00'	25.35'	-	01°41'35"	08°49'41"
13+25.00	25.00'	25.35'	-	01°41'35"	10°31'16"
13+50.00	25.00'	25.35'	-	01°41'35"	12°12'51"
13+75.00	25.00'	25.35'	-	01°41'35"	13°54'27"
13+99.49	24.49'	24.84'	-	01°39'32"	15°33'58"

Def/Ft = 4.06353 Min.

**PLAN LINE 7**

**PROFILE LINE 7**



**LINE 7**  
SHEET TITLE  
448-90329  
PROJECT NUMBER

DFL  
DESIGN BY  
KKL  
DRAWN BY  
GJA  
CHECKED BY

ISSUED  
December 2007  
REVISED

SHEET NO.  
**11 of 18**

PLOTED: Tuesday, December 04, 2007 @ 08:09PM

J:\CIVIL\06266\DWG\WTR\RESIDENTIAL\06266\_CS.DWG