

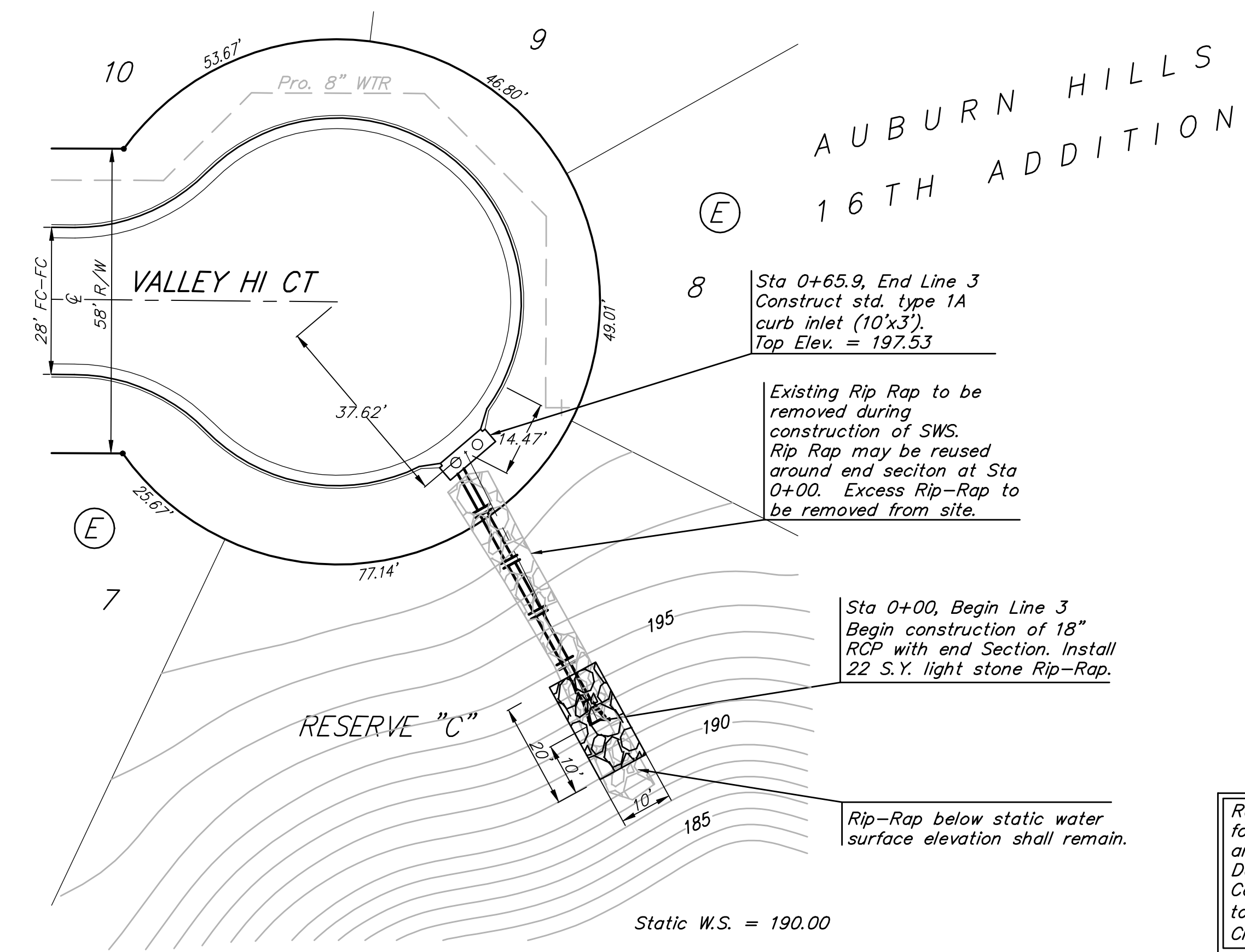
Scale: 1" = 20' Horizontal
 1" = 5' Vertical
 • = Iron



BENCHMARKS:

BM #1: "C" Cut on Top of Curb at West Line of Lot 7, Block A, Auburn Hills 5th Addition. Elev. = 207.73 (City Datum)

BM #2: Disc in Back of Curb, North of Front Corner Common to Lots 23 and 24, Block D, Auburn Hills 12th Addition. Elev. = 191.84 (City Datum)



8 Sta 0+65.9, End Line 3 Construct std. type 1A curb inlet (10'x3'). Top Elev. = 197.53

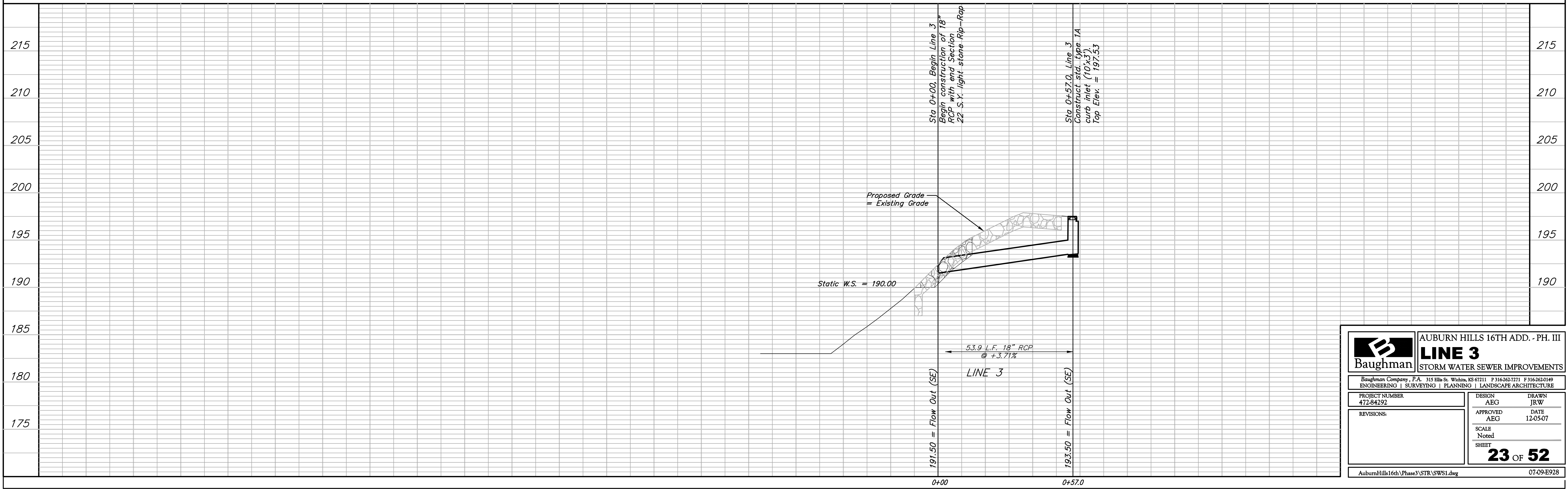
Existing Rip Rap to be removed during construction of SWS. Rip Rap may be reused around end section at Sta 0+00. Excess Rip-Rap to be removed from site.

Sta 0+00, Begin Line 3 Begin construction of 18" RCP with end Section. Install 22 S.Y. light stone Rip-Rap.

Rip-Rap below static water surface elevation shall remain.

Static W.S. = 190.00

Remove trees only as necessary for sanitary sewer construction and only with permission of Developer or Baughman Co. Cost of removal to be incidental to lump sum bid item "Site Clearing & Restoration".



		AUBURN HILLS 16TH ADD. - PH. III	
		LINE 3	
PROJECT NUMBER 472-84292		DESIGN AEG	DRAWN JRW
APPROVED AEG		DATE 12-05-07	
REVISIONS:		SCALE Noted	SHEET 23 OF 52
AuburnHills16th/Phase3/STR/SWS1.dwg			07-09-E928