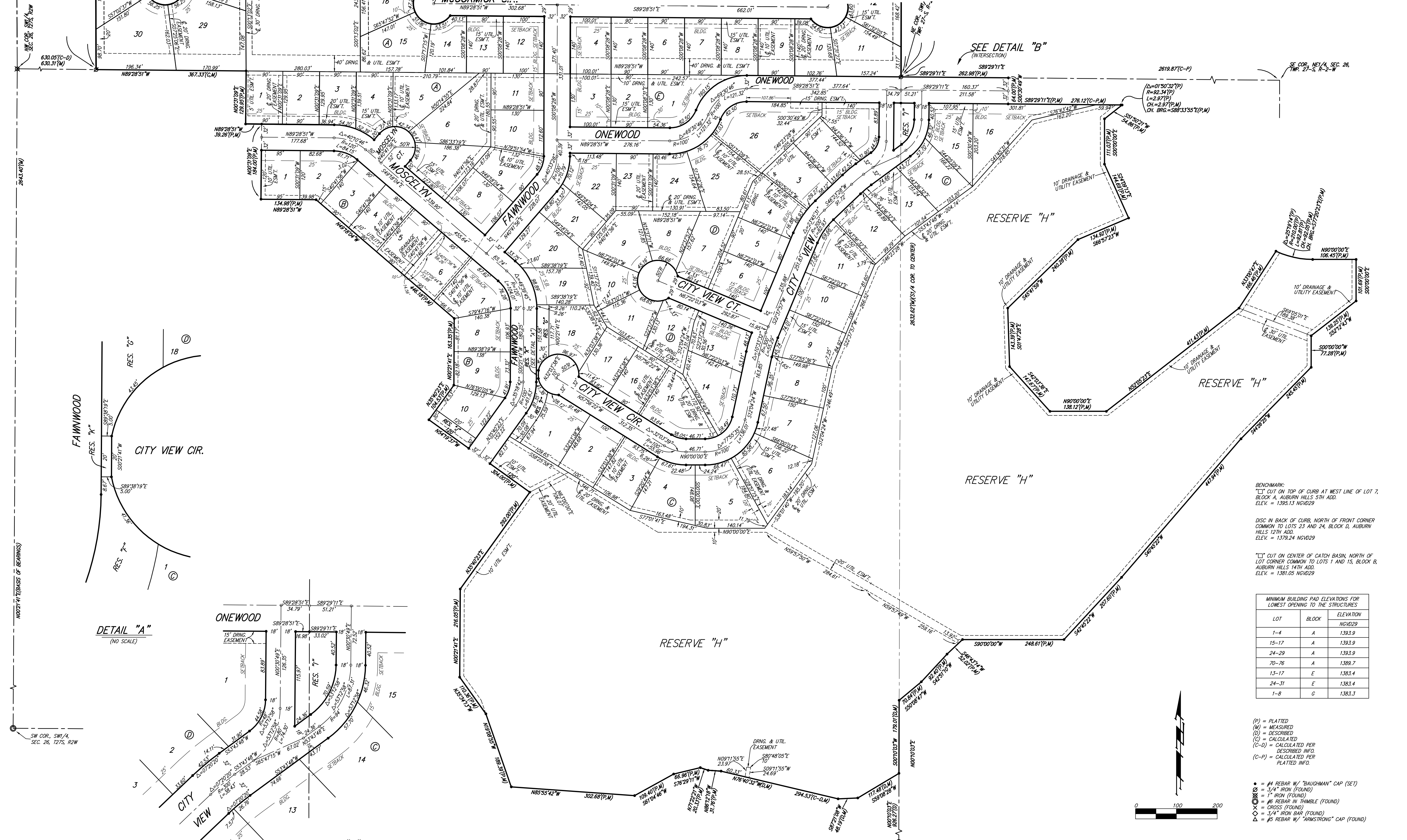
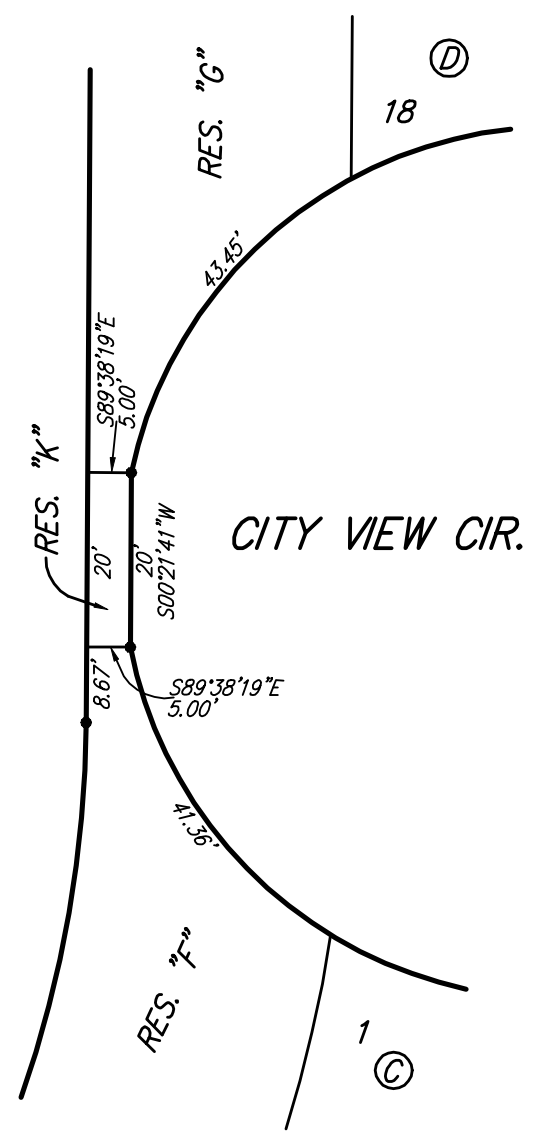


# AUBURN HILLS 16TH ADDITION

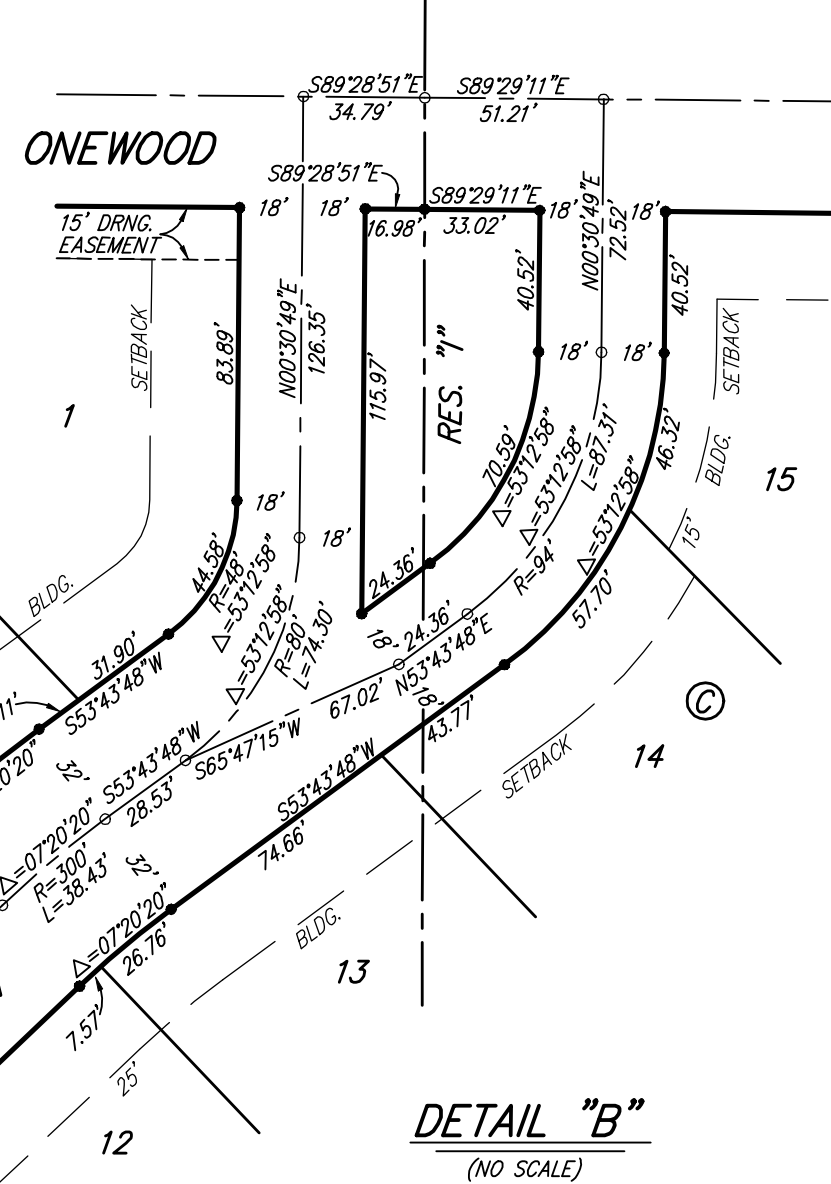
## WICHITA, SEDGWICK COUNTY, KANSAS



**DETAIL "A"**  
(NO SCALE)



**DETAIL "B"**  
(NO SCALE)



BENCHMARK:  
 [ ] CUT ON TOP OF CURB AT WEST LINE OF LOT 7, BLOCK A, AUBURN HILLS 5TH ADD. ELEV. = 1395.13 NGVD29  
 DISC IN BACK OF CURB, NORTH OF FRONT CORNER COMMON TO LOTS 23 AND 24, BLOCK D, AUBURN HILLS 12TH ADD. ELEV. = 1379.24 NGVD29  
 [ ] CUT ON CENTER OF CATCH BASIN, NORTH OF LOT CORNER COMMON TO LOTS 1 AND 15, BLOCK B, AUBURN HILLS 14TH ADD. ELEV. = 1381.05 NGVD29

MINIMUM BUILDING PAD ELEVATIONS FOR LOWEST OPENING TO THE STRUCTURES		
LOT	BLOCK	ELEVATION
NGVD29		
1-4	A	1,393.9
15-17	A	1,393.9
24-29	A	1,393.9
70-76	A	1,389.7
13-17	E	1,383.4
24-31	E	1,383.4
1-8	G	1,383.3

- (P) = PLATTED
  - (M) = MEASURED
  - (D) = DESCRIBED
  - (C) = CALCULATED
  - (C-D) = CALCULATED PER DESCRIBED INFO.
  - (C-P) = CALCULATED PER PLATTED INFO.
- = #4 REBAR W/ "BAUGHMAN" CAP (SET)
  - = 3/4" IRON (FOUND)
  - ⊗ = 1" IRON (FOUND)
  - ⊙ = #6 REBAR IN TRIMBLE (FOUND)
  - × = CROSS (FOUND)
  - ◇ = 3/4" IRON BAR (FOUND)
  - △ = #5 REBAR W/ "ARMSTRONG" CAP (FOUND)

