

SANITARY SEWER EXTENSION TO SERVE SISTERS OF ST. JOSEPH APARTMENT BUILDING PRIVATE PROJECT NUMBER 1797 PPS (607861)

GENERAL NOTES

1. Contractor will be required to provide a minimum advance notice of forty-eight (48) hours to utility companies prior to starting any excavation as follows:

Kansas One-Call 687-2470

The Contractor must notify the following in case of an emergency:

Cox Communications	262-0661
Kansas Gas Service	383-8600
Westar	383-8600
Aquila Energy	1-800-303-0357
Southwestern Bell Telephone Company	1-800-286-8313
City of Wichita Water Department	262-6000
City of Wichita Sewer Maintenance	262-6000

2. Underground utility service lines and overhead utility pole lines are to be adjusted as necessary by others prior to construction unless the plans specifically call for their adjustment by the Contractor or unless the plans specifically identify a utility to be adjusted by its owner during construction. Existing utilities and their location, as shown on the plans, represent the best information obtainable for design. Location information has been obtained from the various utility companies and is either from company record drawings or company-provided field locations. The Contractor will be required to work around existing utilities within the right-of-way which do not conflict with proposed construction.

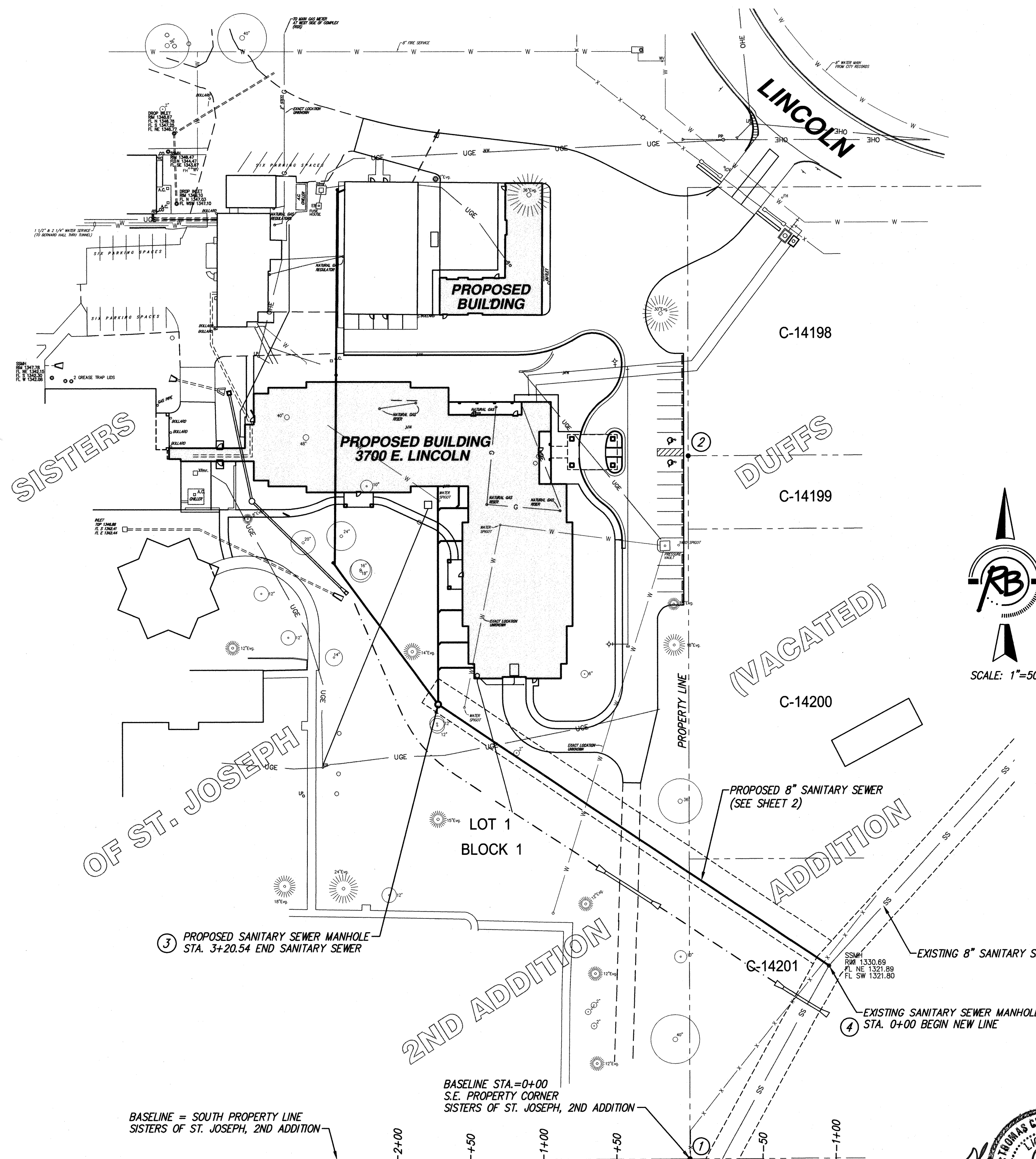
3. Rubble from the removal of miscellaneous structures and excess excavation which is to be wasted shall be disposed of on sites to be provided by the Contractor. These sites shall be approved by the Engineer as to suitability, appearance and site location. Locations that, in the opinion of the Engineer, will leave an unsightly appearance will not be approved.

4. All disposal sites must be approved by the Kansas Department of Health and Environment. Material either stockpiled or disposed of in a flood plain would require a Kansas State Board of Agriculture permit. Any material dumped in waters of the United States or wetlands is subject to U.S. Corps permitting regulations. Any material buried or stockpiled beyond approved of Engineers construction limits would require additional archeological investigations unless buried in a previously approved borrow location.

5. The Contractor shall give all property owners and/or tenants of developed property directly abutting the construction of this project a minimum of ten (10) days advance notice prior to start of construction.

6. The Contractor shall be responsible for preserving property irons. The Contractor will be required to re-establish any property irons which are damaged or destroyed by his construction operations. Such irons shall be re-established by a licensed land surveyor in accordance with state laws.

7. Erosion control will be handled by the General Contractor as part of the erosion control master plan for this site.



INDEX OF SHEETS

(CITY SUBMITTAL INDEX)

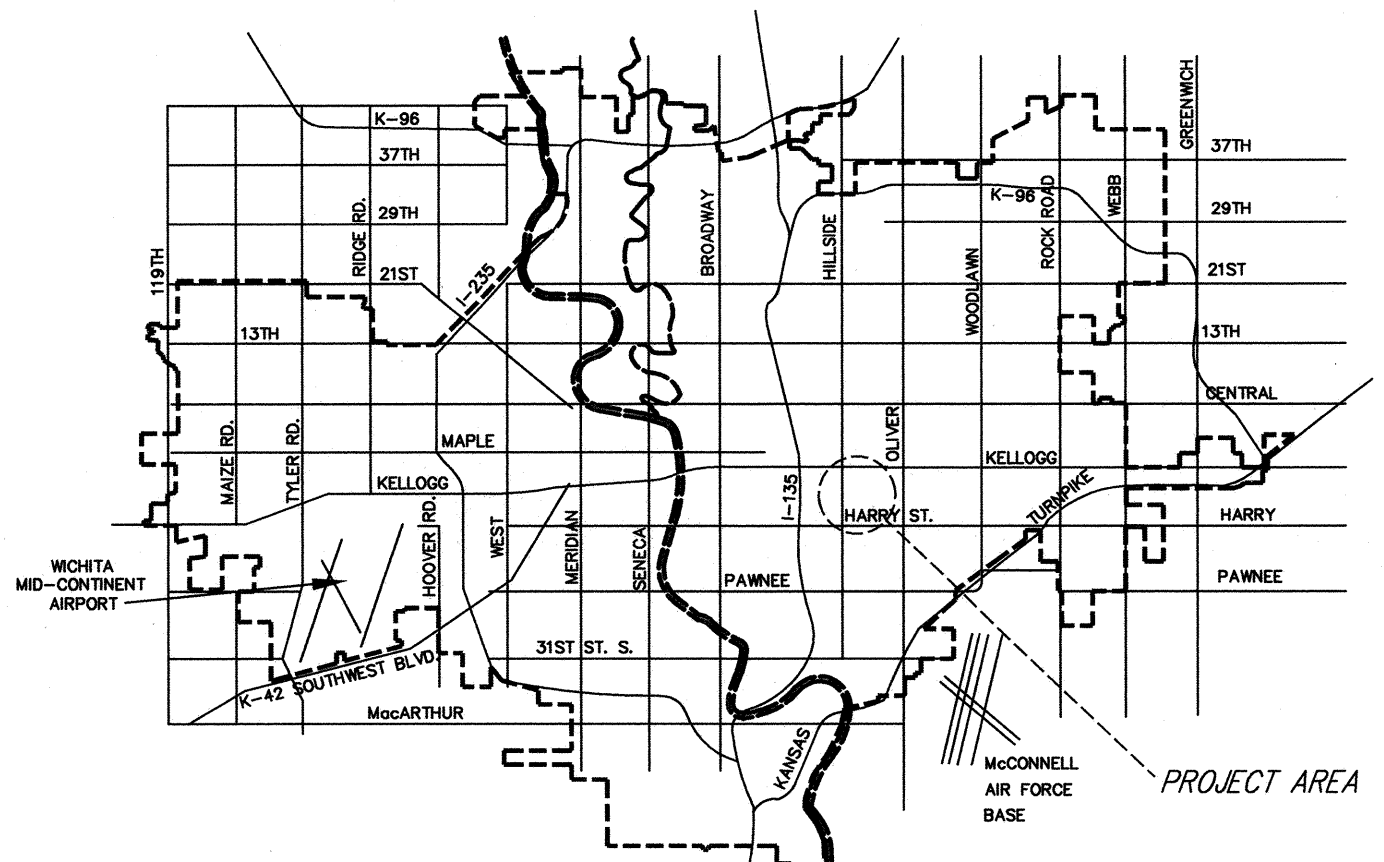
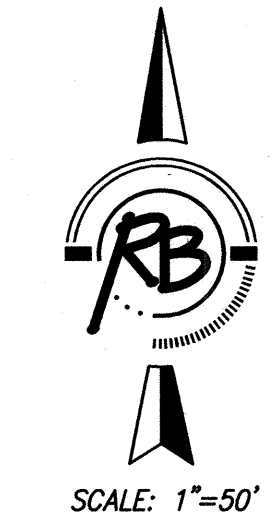
1. INDEX SHEET
2. SANITARY SEWER PLAN/PROFILE
3. TYPE 'P' MANHOLE DETAILS

BENCHMARKS

CITY OF WICHITA
BLUFF & LINCOLN -IN TURN ISLAND
29.5 W. OF E. BLUFF, 44.5 S. OF E. MORRIS
TO EAST 24' S.W. OF L.P.
ELEV.=1349.65

COORDINATE CONTROL TABLE

CONTROL NO.	DESCRIPTION	NORTHING	EASTING
1	S.E. COR. LOT 1, BLOCK 1 (3/4" I.P.)	19337.44	20000.82
2	3/4" I.P. SPINNER	19817.49	20000.20
3	STA. 3+20.54 NEW SAN. SEWER MH	19646.95	19828.92
4	STA. 0+00 EXISTING MANHOLE	19469.82	20096.08



APPROVED AS NOTED
BY CITY ENGINEER OF WICHITA

Sanitary Sewers URH 10/1/07

Storm Sewers _____

Driveway Approaches _____

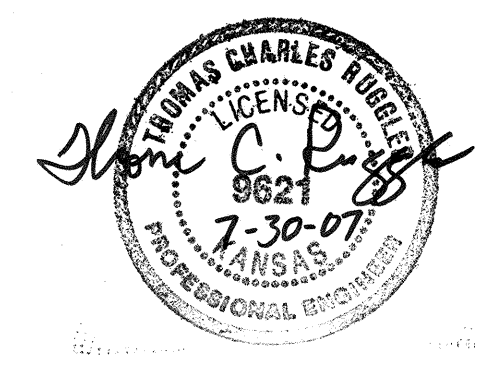
Water Mains _____

Paving _____

NOTE TO CONTRACTORS

Inspection and testing for this project are to be provided by a Licensed Consulting Engineering Firm under contract with the Owner/Developer. Said inspection to be in accordance with the City of Wichita standard construction engineering practices and certified by a Licensed Professional Engineer. No work shall be performed in dedicated easements or public right-of-way by the Contractor without such inspection, nor shall any work be commenced without written authorization by the City Engineer.

CITY OF WICHITA, KANSAS
JAMES L. ARMOUR, P.E., CITY ENGINEER



Ruggles & Bohm, P.A.
Engineering, Surveying, Land Planning
924 North Main (316) 264-8008
Wichita, Kansas 67203 (316) 264-4621 fax
www.rbkansas.com E-mail: info@rbkansas.com