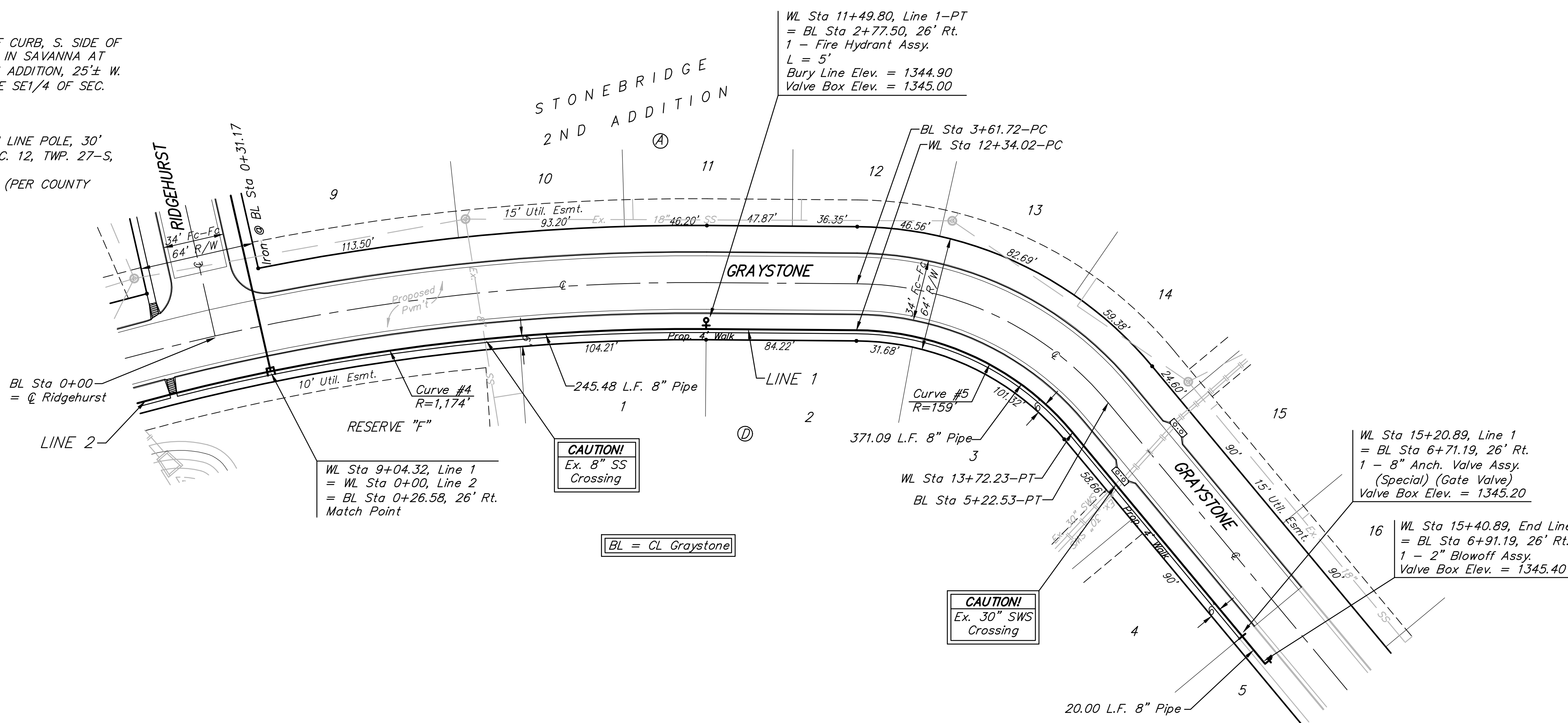


BENCHMARK:
 BM #1: "□" CUT, TOP OF CURB, S. SIDE OF SUNDANCE AS DEDICATED IN SAVANNA AT CASTLE ROCK RANCH 7TH ADDITION, 25± W. OF THE WEST LINE OF THE SE1/4 OF SEC. 12, TWP. 27-S, R-2-E. ELEV. = 1347.33 NGVD29

BM #2: 60d NAIL IN HIGH LINE POLE, 30' SOUTH OF S1/4 COR., SEC. 12, TWP. 27-S, R-2-E. ELEV. = 1348.58 NGVD29 (PER COUNTY RECORD)



For radii under 200', contractor shall use short pipe lengths.

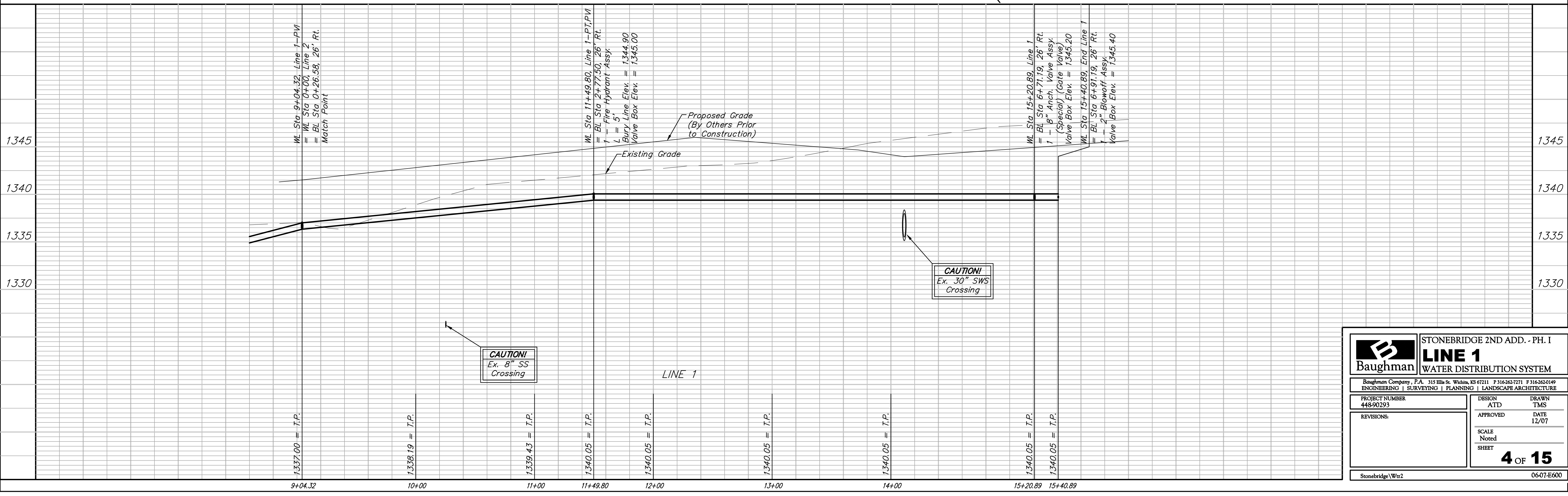
Scale: 1" = 40' Horizontal
 1" = 5' Vertical
 • = Iron

Curve #4
 Curve Data Based on Waterline
 Rad. = 1174' Delta = 11° 58' 50" Tangent = 123.19'
 Arc = 245.48' L.C. = 245.04' Def/Ft. = 1.46414 Min.

Station	Arc	CHORD LENGTHS		
		6" Rt.	Defl.	T. Defl.
9+04.32	-	-	0'00"00"	0'00"00"
9+25.00	20.68'	20.57'	0'30"17"	0'30"17"
9+50.00	25.00'	24.87'	0'36"36"	1'06"53"
9+75.00	25.00'	24.87'	0'36"36"	1'43"29"
10+00.00	25.00'	24.87'	0'36"36"	2'20"05"
10+25.00	25.00'	24.87'	0'36"36"	2'56"41"
10+50.00	25.00'	24.87'	0'36"36"	3'33"18"
10+75.00	25.00'	24.87'	0'36"36"	4'09"54"
11+00.00	25.00'	24.87'	0'36"36"	4'46"30"
11+25.00	25.00'	24.87'	0'36"36"	5'23"06"
11+49.80	24.80'	24.67'	0'36"18"	5'59"25"

Curve #5
 Curve Data Based on Waterline
 Rad. = 159' Delta = 49° 48' 18" Tangent = 73.81'
 Arc = 138.21' L.C. = 133.90' Def/Ft. = 10.81072 Min.

Station	Arc	CHORD LENGTHS		
		6" Rt.	Defl.	T. Defl.
12+34.02	-	-	0'00"00"	0'00"00"
12+50.00	15.98'	15.37'	2'52"45"	2'52"45"
12+75.00	25.00'	24.03'	4'30"16"	7'23"01"
13+00.00	25.00'	24.03'	4'30"16"	11'53"17"
13+25.00	25.00'	24.03'	4'30"16"	16'23"33"
13+50.00	25.00'	24.03'	4'30"16"	20'53"49"
13+72.23	22.23'	21.37'	4'00"19"	24'54"09"



B Baughman
 ENGINEERING | SURVEYING | PLANNING | LANDSCAPE ARCHITECTURE

STONEBRIDGE 2ND ADD. - PH. I
LINE 1
 WATER DISTRIBUTION SYSTEM

PROJECT NUMBER: 448-90293
 DESIGN: ATD
 DRAWN: TMS
 APPROVED: [Signature]
 DATE: 12/07

SCALE: Noted
 SHEET: **4 OF 15**

Stonebridge | Wtr2 06-07-E600