

GENERAL NOTES:

1. The Contractor shall provide a minimum advance notice of 48 hours to utility companies prior to starting construction as follows:

KANSAS ONE CALL 1-800-344-7233

2. Pavement grades shown are to the top of pavement.

3. Existing elevations were provided by others. Contractor shall verify existing grades and notify Engineer of any discrepancies. Elevations are based on an assumed datum.

4. Contractor shall be responsible for establishing and protecting Benchmark(s) throughout construction.

5. Contractor shall strip site of topsoil (6" min.) and stockpile this material to be used in grassed areas.

6. Compaction of fill material and subgrade stabilization shall be 95% Std. Proctor Density.

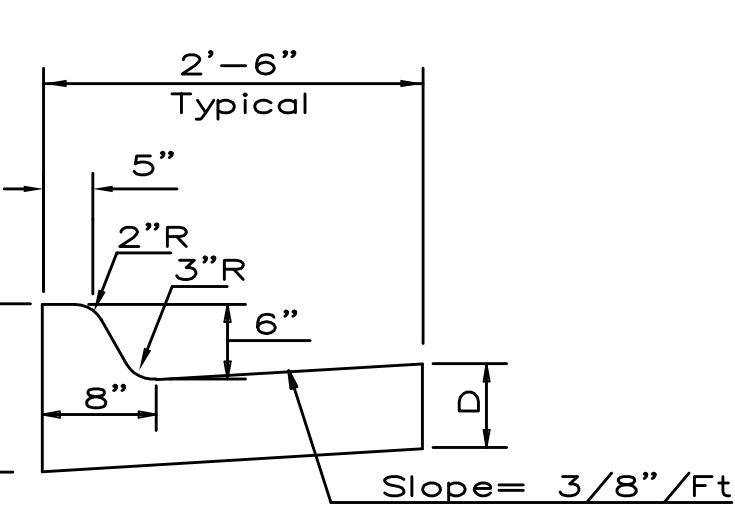
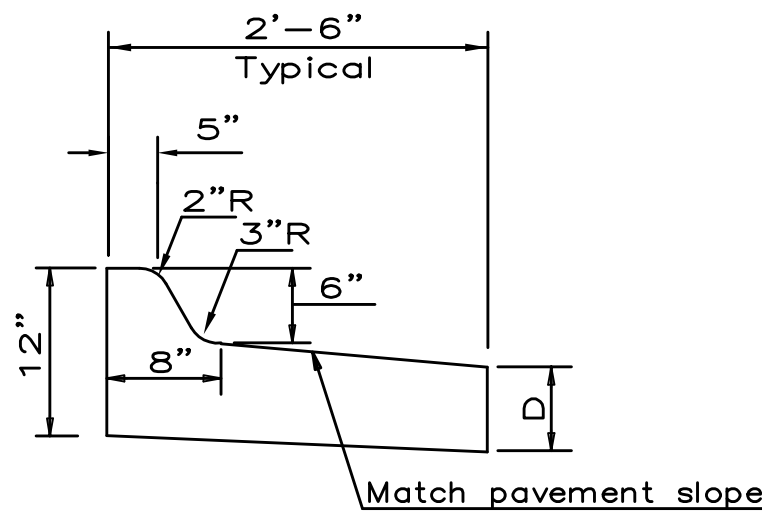
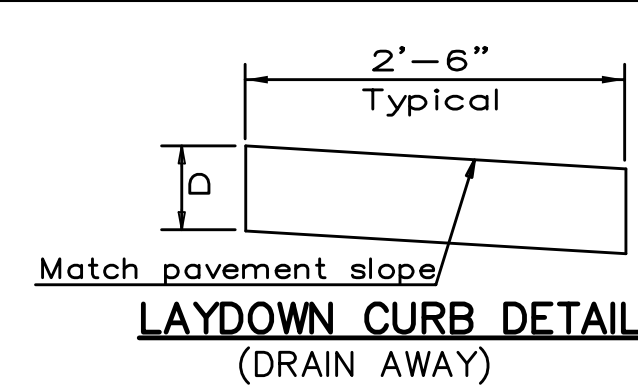
7. Pavement type shall be as shown in the Typical Section & Notes On Sheet No. 7.

SURVEY DISCLAIMER:

TOPOGRAPHIC SURVEY AND CONTOUR MAP USED IN PREPARING PLANS WAS PROVIDED BY SAVOY COMPANY, P.A., 535 S. EMPORIA, SUITE 104, WICHITA, KS. ENGINEER DOES NOT GUARANTEE SURVEY ELEVATIONS FOR ACCURACY. CONTRACTOR SHALL VERIFY ELEVATIONS AND NOTIFY ENGINEER OF ANY DISCREPANCIES.

SOUTH PARKING LOT GRADING PLAN

EARTHWORK SUMMARY
 EXCAVATION=2,835 C.Y.
 COMPACTED FILL=34 C.Y.
 NET EXCAVATION=2,801 C.Y.
 (FOR INFORMATION ONLY)

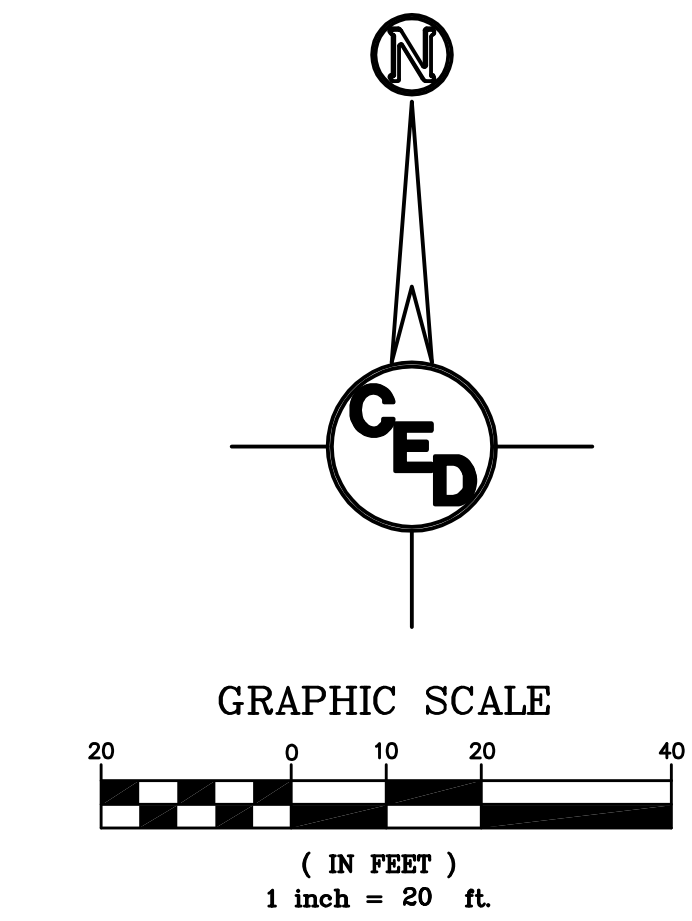
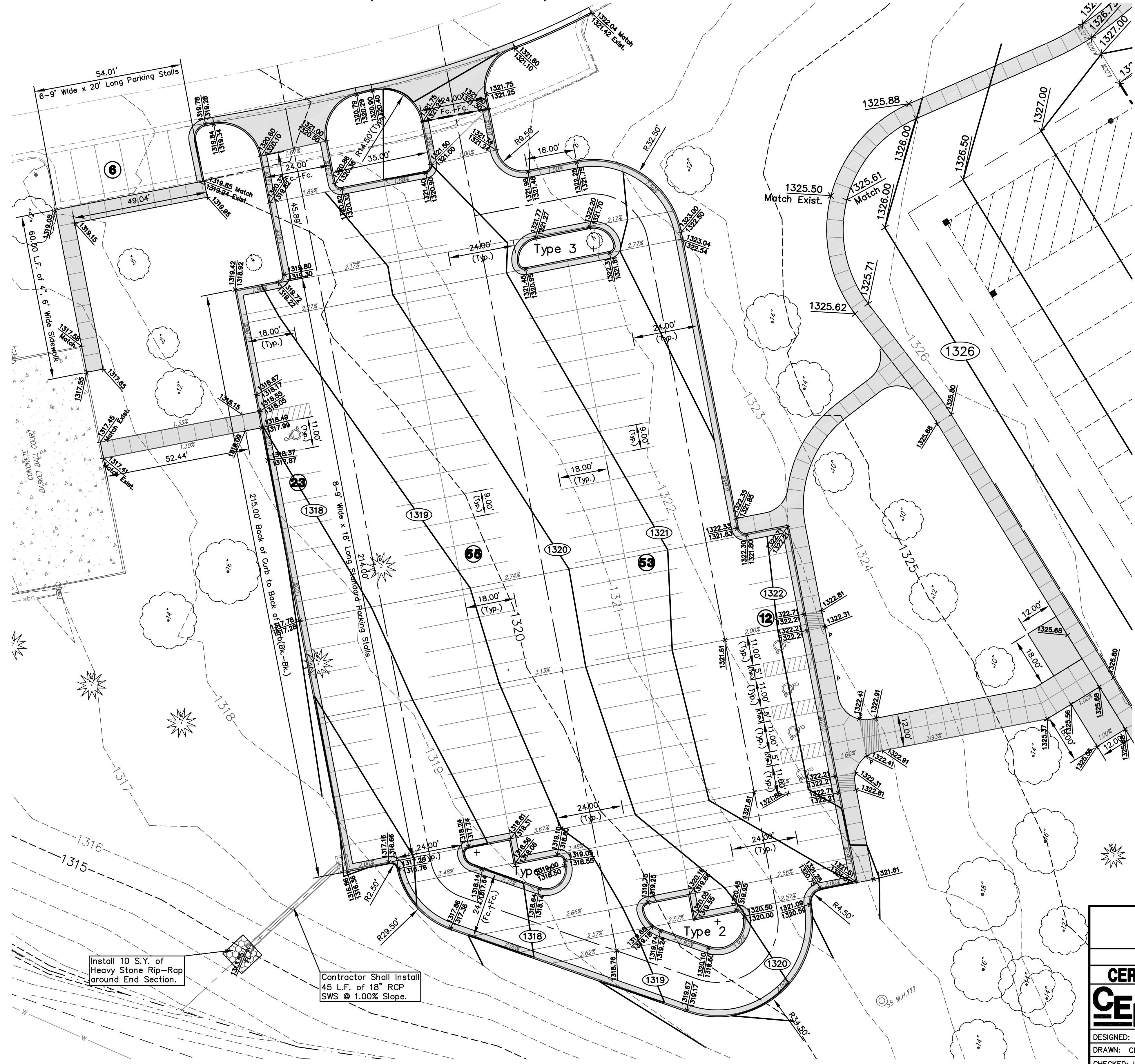
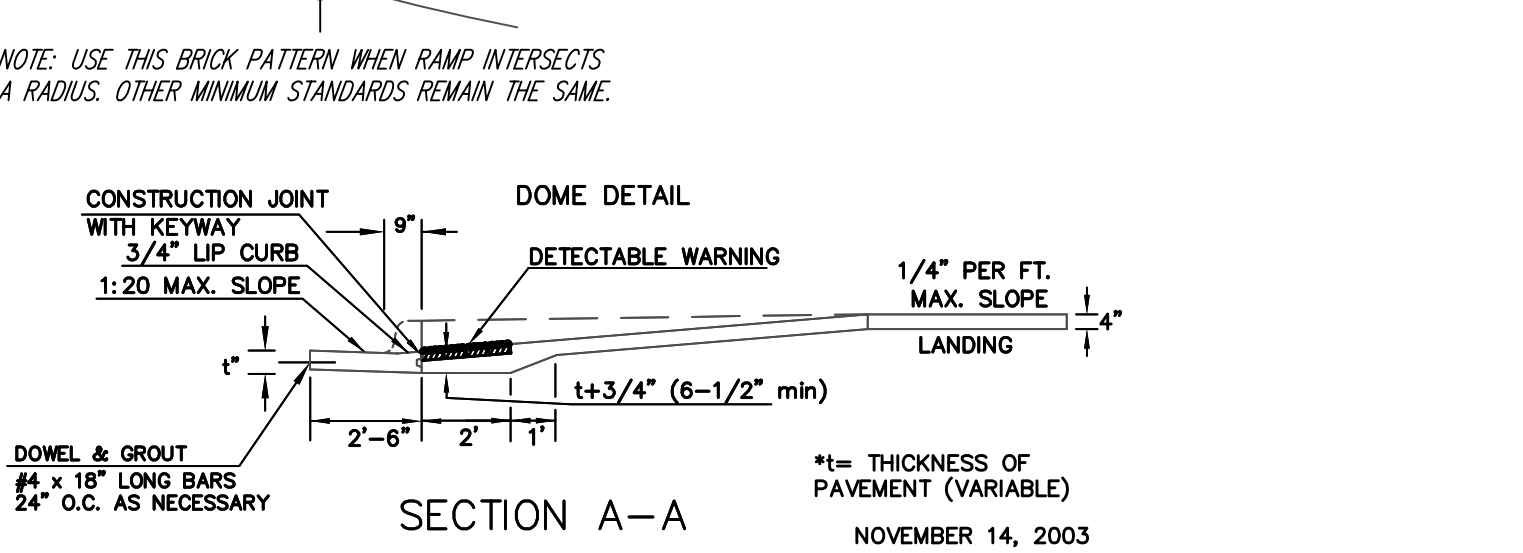
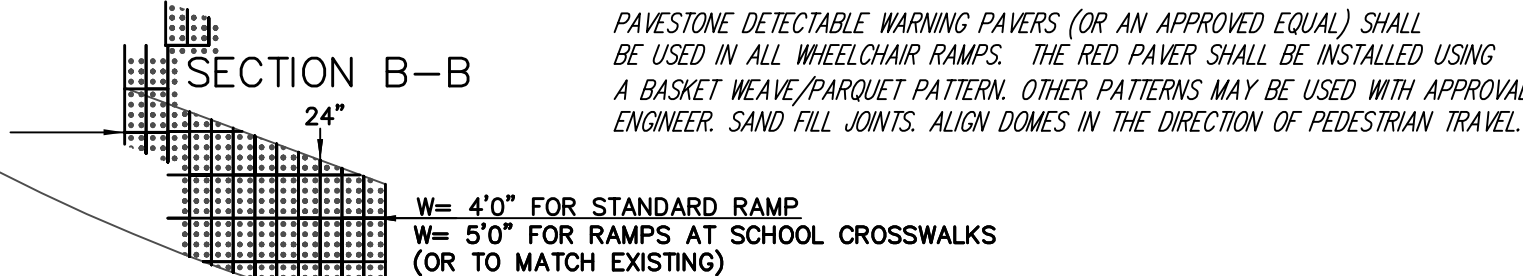
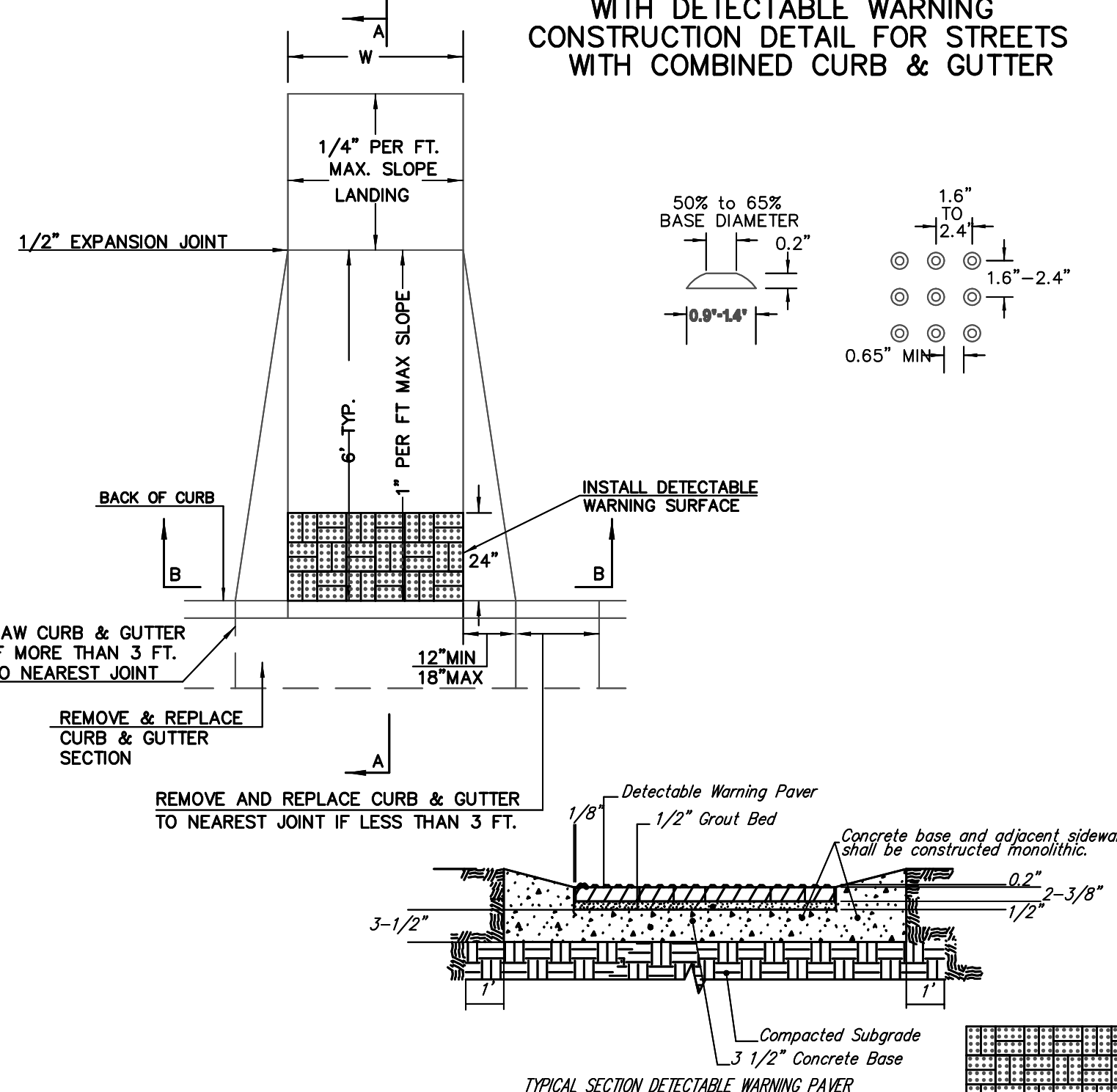


CURB & GUTTER DETAIL (DRAIN AWAY)

CURB & GUTTER DETAIL (DRAIN AWAY)

W= 4'0" FOR STANDARD RAMP
 W= 5'0" FOR RAMPS AT SCHOOL CROSSWALKS
 (OR TO MATCH EXISTING)

(TYPE A)
STANDARD WHEELCHAIR RAMP WITH DETECTABLE WARNING CONSTRUCTION DETAIL FOR STREETS WITH COMBINED CURB & GUTTER



- LEGEND**
- G = GAS MAIN
 - W = WATER MAIN
 - SS = SANITARY SEWER
 - SWS = STORM WATER SEWER
 - UGE = UNDER GROUND ELECTRIC
 - UGT = UNDER GROUND TELEPHONE
 - FOT = BURIED FIBER OPTIC TELEPHONE
 - B.M. = BENCH MARK
 - E.B. = ELECTRIC BOX
 - GUY ANCHOR
 - G.R. = GROUND ROD
 - H.L.P. = HIGH LINE POLE
 - L.P. = LIGHT POLE
 - POST
 - P.P. = POWER POLE
 - SIGN
 - SAV = 1/2" REBAR W/SAVOY CAP (SET)
- Bench Mark #1: Square Cut on S. Curb Return E. Side Jewett Street @ Drive Entrance to Parking Lot on S. Side of Fees Street. Elevation = 1328.29 NGVD
- Bench Mark #2: Square Cut on top of W. Curb line of Jewett Street across from Drive Entrance to Parking Lot on S. Side of Fees Street. Elevation = 1328.35 NGVD
- CTL PT#1 N 19743.574 E 19698.116
 CTL PT#2 N 19333.862 E 20362.772

— Proposed Concrete Pavement (Driveway, Sidewalk and Curb & Gutter)

G SITE GRADING PLAN

- GRADING LEGEND**
- Existing Contour Elevation
 - Proposed Spot Elevation
 - Proposed Contour Elevation
 - Proposed Drainage Flow Direction
 - Proposed Ridge Line

UTILITIES SHOWN REPRESENT THE BEST INFORMATION AVAILABLE FOR DESIGN. ADDITIONAL UTILITIES MAY BE PRESENT ON THIS PROJECT. THE CONTRACTOR SHALL BE RESPONSIBLE FOR DETERMINING THE EXACT LOCATION, DEPTH AND SIZE OF ALL UNDERGROUND UTILITIES PRIOR TO CONSTRUCTION. THE CONTRACTOR SHALL BE LIABLE FOR ANY DAMAGE CAUSED BY THE FAILURE TO DO SO.

SOUTH PARKING LOT SITE GRADING PLAN
 PLANEVIEW PARK, WICHITA, KANSAS
 CED PROJ. NO.: 20051351
CERTIFIED ENGINEERING DESIGN, P.A.
 810 WEST DOUGLAS, SUITE C
 WICHITA, KANSAS 67203
 PH.(316)262-8808 FAX.(316)262-1669

DESIGNED: HDF	SCALE: 1"=20'	SHEET
DRAWN: CKW	DATE: 6/06	6R
CHECKED: HDF	CED FILE: Planeview-Suppl	TOTAL 26