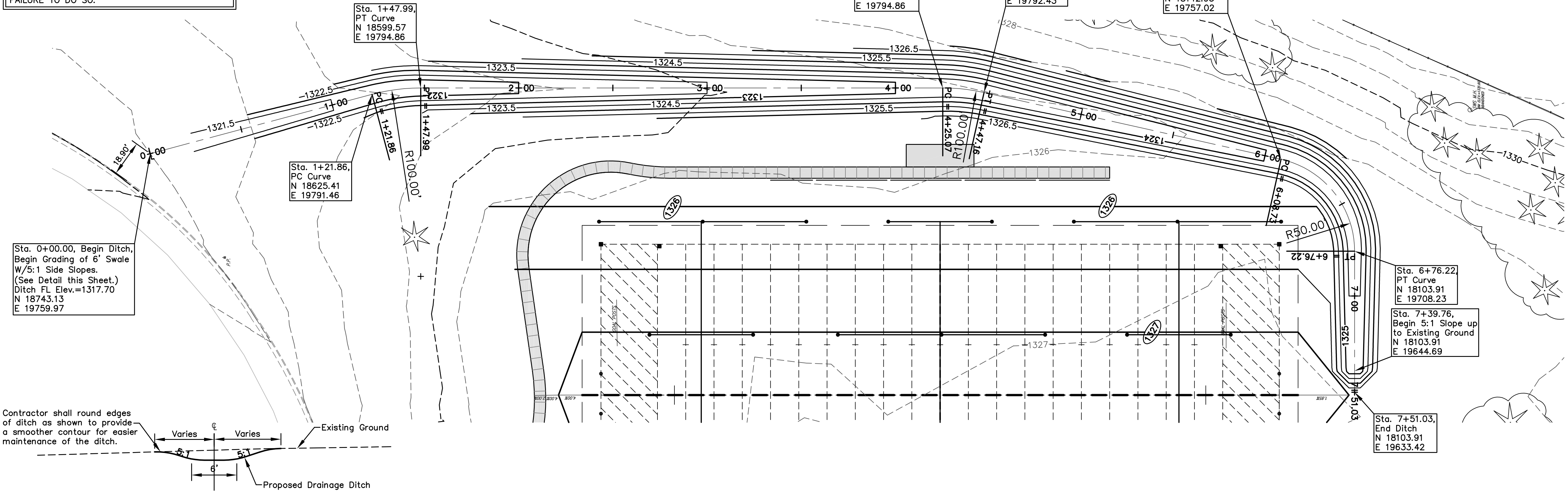
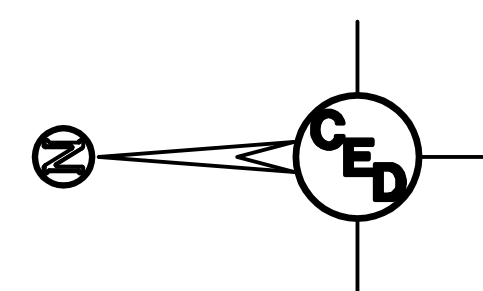
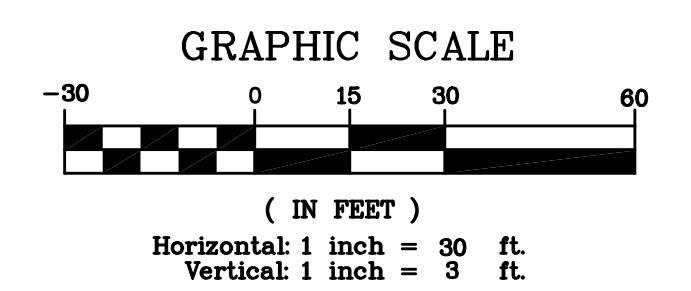


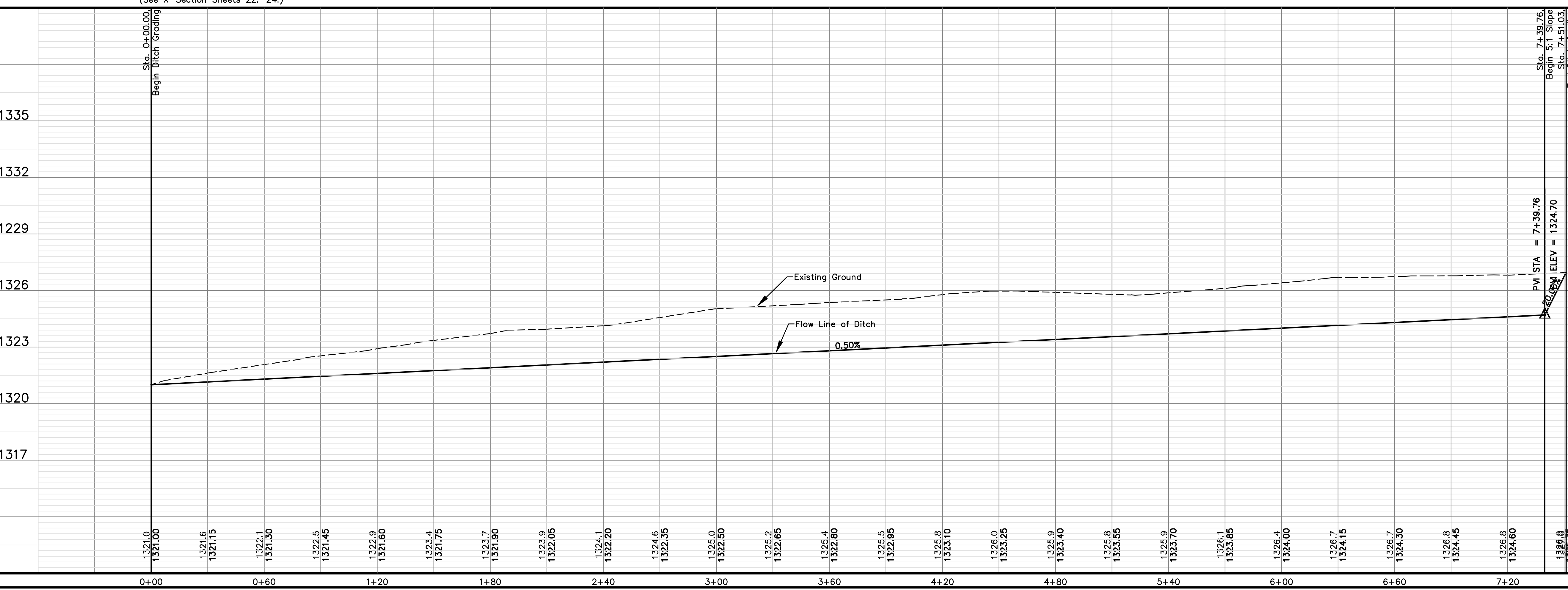
UTILITIES SHOWN REPRESENT THE BEST INFORMATION AVAILABLE FOR DESIGN. ADDITIONAL UTILITIES MAY BE PRESENT ON THIS PROJECT. THE CONTRACTOR SHALL BE RESPONSIBLE FOR DETERMINING THE EXACT LOCATION, DEPTH AND SIZE OF ALL UNDERGROUND UTILITIES PRIOR TO CONSTRUCTION. THE CONTRACTOR SHALL BE LIABLE FOR ANY DAMAGE CAUSED BY THE FAILURE TO DO SO.

**SURVEY DISCLAIMER:**  
TOPOGRAPHIC SURVEY AND CONTOUR MAP USED IN PREPARING PLANS WAS PROVIDED BY SAVOY COMPANY, P.A., 535 S. EMPORIA, SUITE 104, WICHITA, KS. ENGINEER DOES NOT GUARANTEE SURVEY ELEVATIONS FOR ACCURACY. CONTRACTOR SHALL VERIFY ELEVATIONS AND NOTIFY ENGINEER OF ANY DISCREPANCIES.



- LEGEND**
- G = GAS MAIN
  - W = WATER MAIN
  - SS = SANITARY SEWER
  - SWS = STORM WATER SEWER
  - UGE = UNDER GROUND ELECTRIC
  - UGT = UNDER GROUND TELEPHONE
  - FOT = BURIED FIBER OPTIC TELEPHONE
  - B.M. . . . . BENCH MARK
  - E.B. . . . . ELECTRIC BOX
  - GUY ANCHOR
  - G.R. . . . . GROUND ROD
  - H.L.P. . . . . HIGH LINE POLE
  - L.P. . . . . LIGHT POLE
  - POST
  - P.P. . . . . POWER POLE
  - SIGN
  - SAV = 1/2" REBAR W/SAVOY CAP (SET)
- Bench Mark #1: Square Cut on S. Curb Return E. Side Jewett Street @ Drive Entrance to Parking Lot on S. Side of Fees Street. Elevation = 1328.29 NGVD
- Bench Mark #2: Square Cut on top of W. Curb line of Jewett Street across from Drive Entrance to Parking Lot on S. Side of Fees Street. Elevation = 1328.35 NGVD

### SOUTH FOOTBALL FIELD EAST DITCH



SOUTH FOOTBALL FIELD  
**EAST DITCH PLAN/PROFILE**  
PLANEVIEW PARK, WICHITA, KANSAS  
CED PROJ. NO.: 20061433

**CERTIFIED ENGINEERING DESIGN, P.A.**  
810 WEST DOUGLAS, SUITE C  
WICHITA, KANSAS 67203  
PH.(316)262-8808 FAX.(316)262-1669

|               |                             |          |
|---------------|-----------------------------|----------|
| DESIGNED: HDF | SCALE: 1"=30'               | SHEET 10 |
| DRAWN: CKW    | DATE: 10/06                 | TOTAL 26 |
| CHECKED: HDF  | CED FILE: PlainviewPark2-Ba |          |