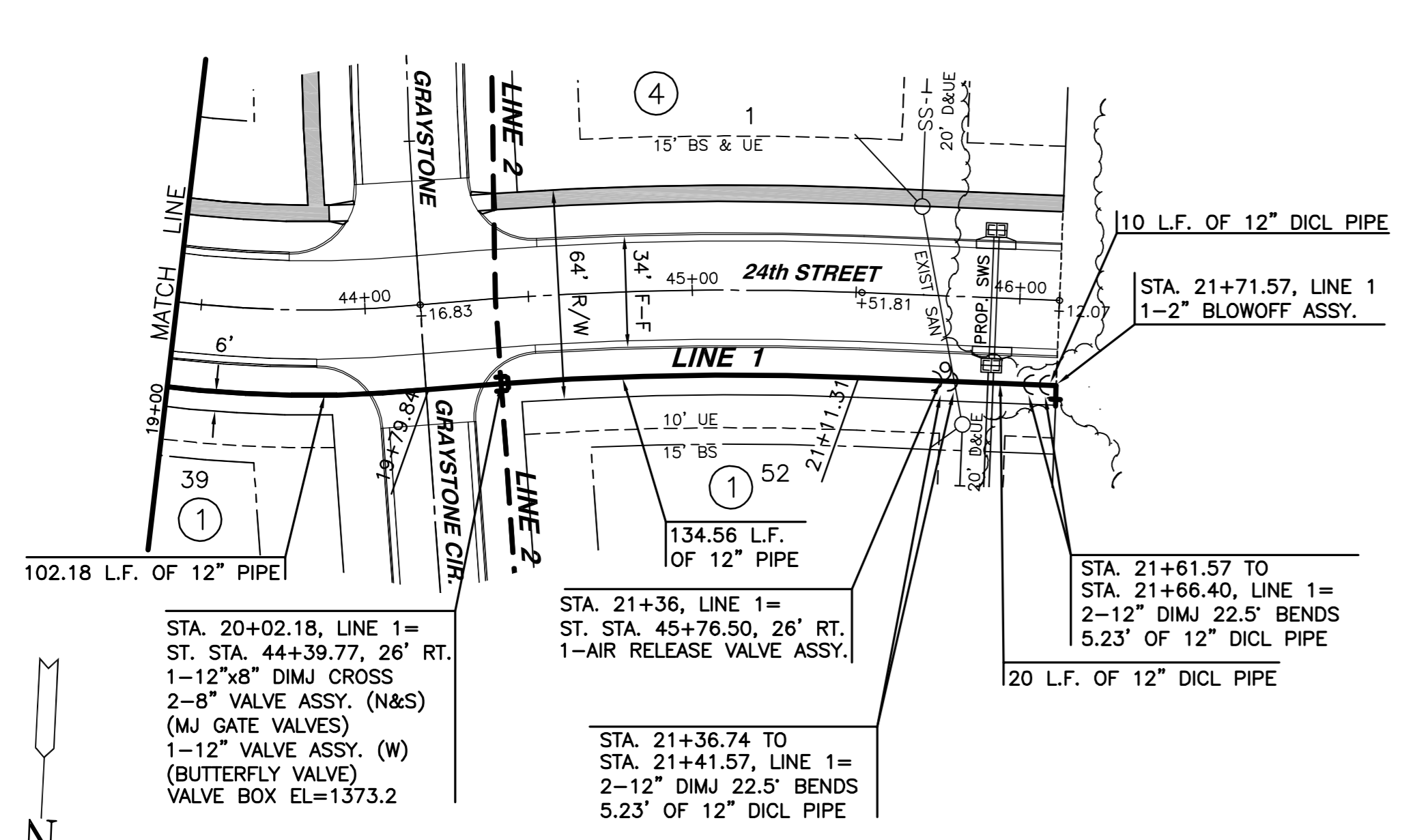


WATER DISTRIBUTION PLANS
MONARCH LANDING SECOND ADD.
PHASE 1



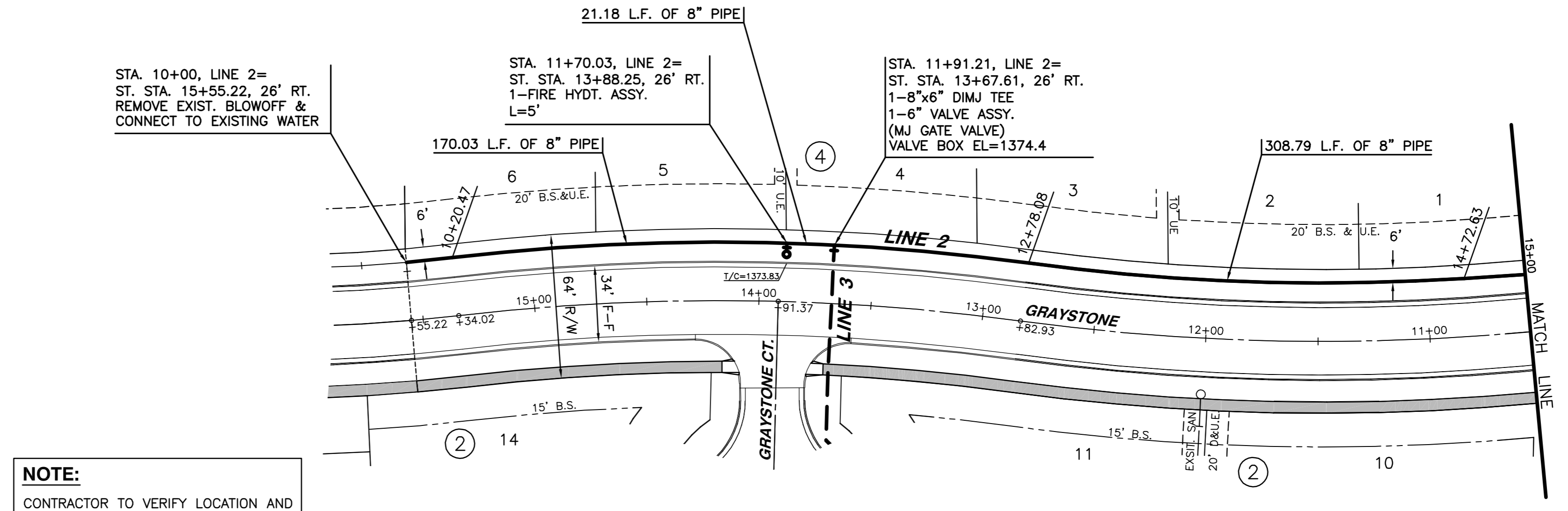
CURVE TABLE
 $\Delta = 07^{\circ}44'01''$ R = 974.00' T = 65.83' L = 131.47' LC = 131.37'

CURVE DATA BASED ON WATERLINE $\Delta/2 = 03^{\circ}52'01''$

STATION	ARC	6'LT Offset	6'RT Offset	DEFLECTION	TOTAL DEFLECTION
19+79.84	-	-	-	00°00'00"	00°00'00"
20+00.00	20.16'	-	20.04'	00°35'35"	00°35'35"
20+25.00	25.00'	-	24.85'	00°44'07"	01°19'42"
20+50.00	25.00'	-	24.85'	00°44'07"	02°03'49"
20+75.00	25.00'	-	24.85'	00°44'07"	02°47'56"
21+00.00	25.00'	-	24.85'	00°44'07"	03°32'03"
21+11.31	11.31'	-	11.24'	00°19'57"	03°52'00"

Def/Ft = 1.76476 Min.

PLAN LINE 1
SCALE: 1" = 40'



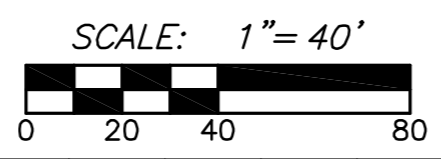
NOTE:
CONTRACTOR TO VERIFY LOCATION AND ELEVATION OF EXISTING 8" WATER LINE PRIOR TO CONSTRUCTION.

CURVE TABLE
 $\Delta = 01^{\circ}37'11''$ R = 724.00' T = 10.23' L = 20.47' LC = 20.47'

CURVE DATA BASED ON WATERLINE $\Delta/2 = 00^{\circ}48'36''$

STATION	ARC	6'LT Offset	6'RT Offset	DEFLECTION	TOTAL DEFLECTION
10+00.00	-	-	-	00°00'00"	00°00'00"
10+20.47	20.47'	-	20.30'	00°48'36"	00°48'36"

Def/Ft = 2.37413 Min.



CURVE TABLE
 $\Delta = 14^{\circ}23'11''$ R = 1026.00' T = 129.49' L = 257.62' LC = 256.94'

CURVE DATA BASED ON WATERLINE $\Delta/2 = 07^{\circ}11'36''$

STATION	ARC	CHORD LENGTH		DEFLECTION	TOTAL DEFLECTION
		6'LT Offset	6'RT Offset		
10+20.47	-	-	-	00°00'00"	00°00'00"
10+50.00	29.53'	29.70'	-	00°49'28"	00°49'28"
10+75.00	25.00'	25.15'	-	00°41'53"	01°31'21"
11+00.00	25.00'	25.15'	-	00°41'53"	02°13'14"
11+25.00	25.00'	25.15'	-	00°41'53"	02°55'07"
11+50.00	25.00'	25.15'	-	00°41'53"	03°37'00"
11+70.03	20.03'	20.15'	-	00°33'33"	04°10'34"
11+75.00	4.97'	5.00'	-	00°08'20"	04°18'53"
11+91.21	16.21'	16.30'	-	00°27'09"	04°46'03"
12+00.00	8.79'	8.84'	-	00°14'44"	05°00'46"
12+25.00	25.00'	25.15'	-	00°41'53"	05°42'39"
12+50.00	25.00'	25.15'	-	00°41'53"	06°24'32"
12+75.00	25.00'	25.15'	-	00°41'53"	07°06'25"
12+78.09	3.09'	3.11'	-	00°05'10"	07°11'36"

Def/Ft = 1.67532 Min.

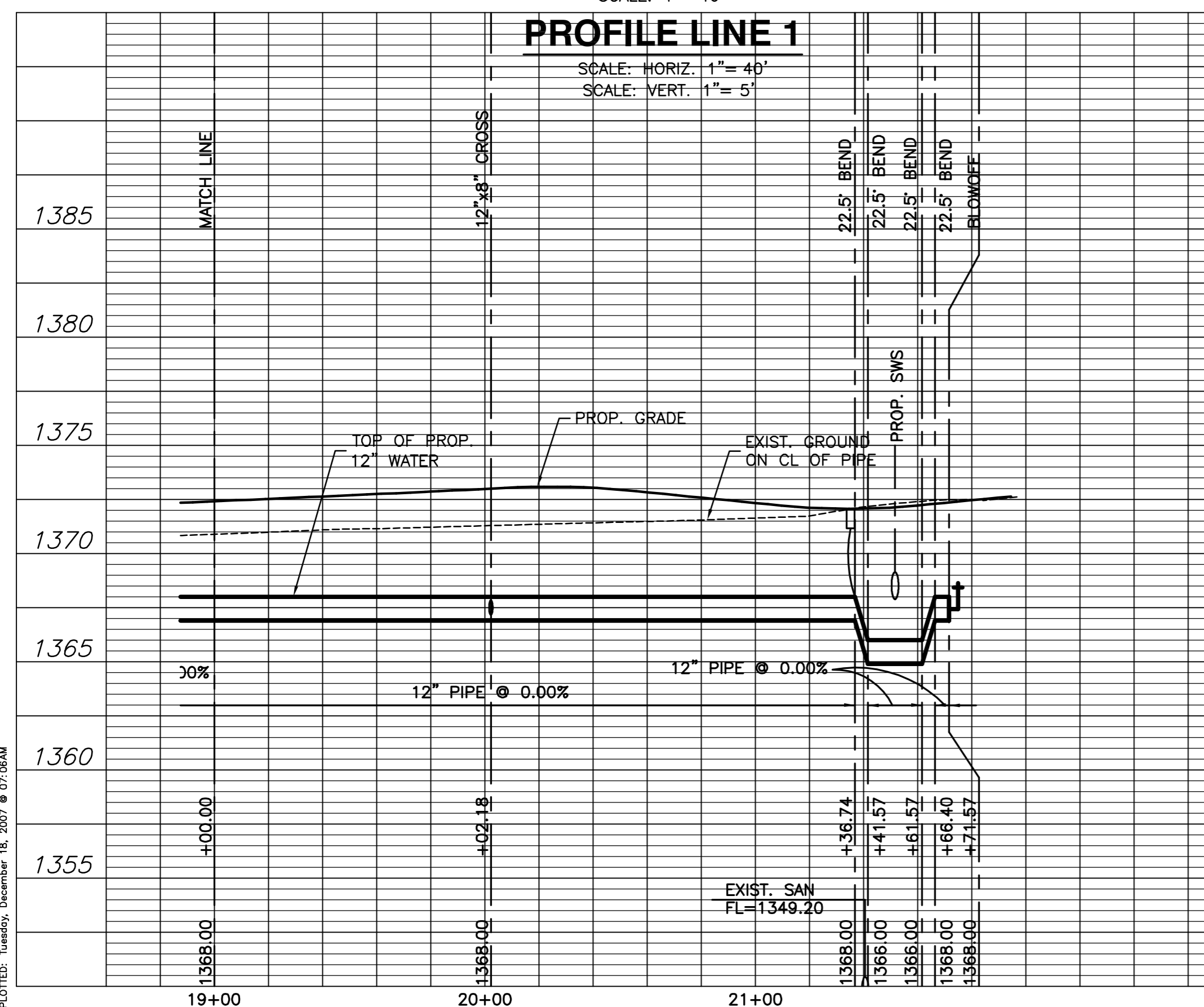
CURVE TABLE
 $\Delta = 11^{\circ}26'39''$ R = 974.00' T = 97.60' L = 194.55' LC = 194.22'

CURVE DATA BASED ON WATERLINE $\Delta/2 = 05^{\circ}43'19''$

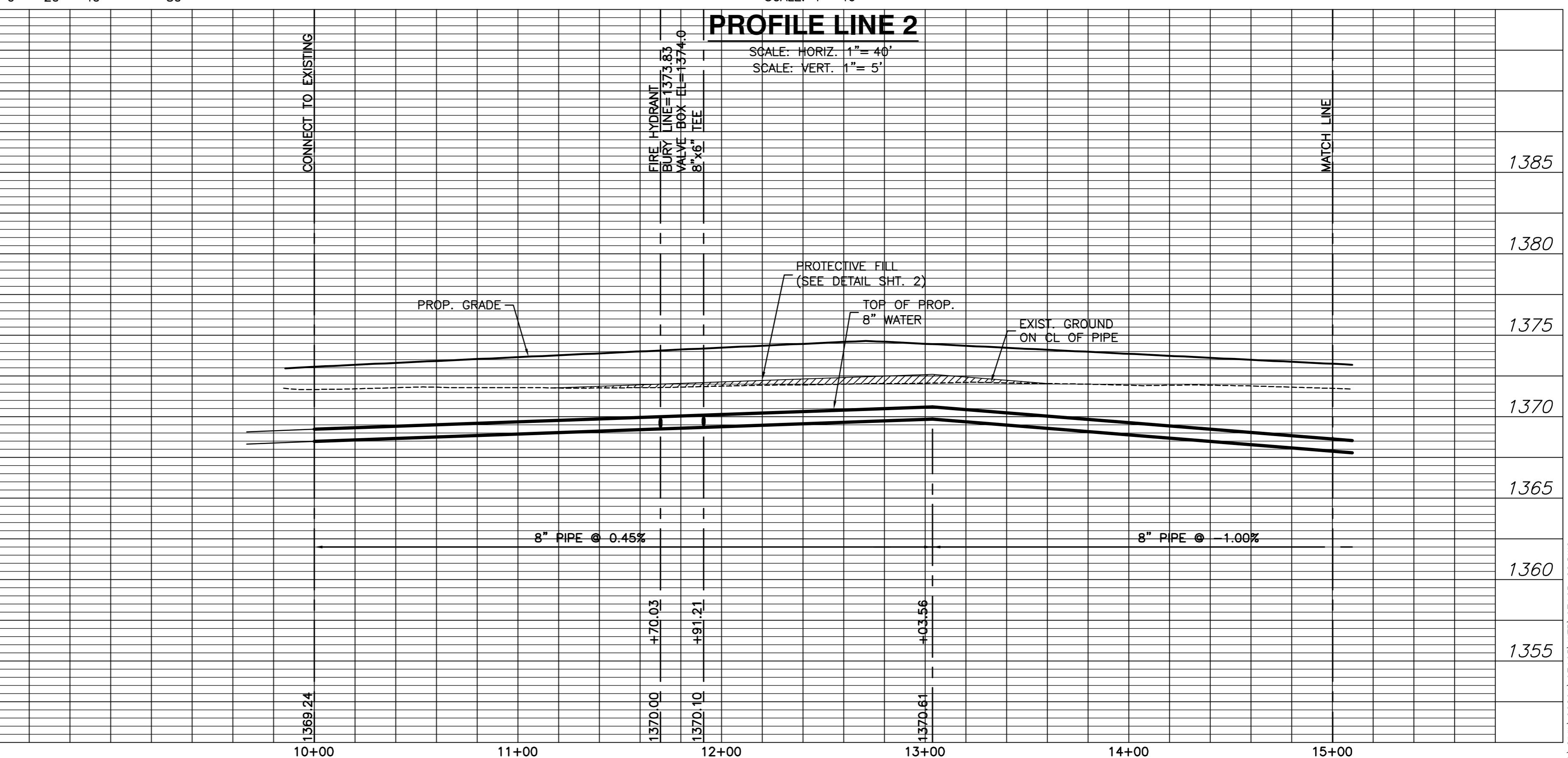
STATION	ARC	CHORD LENGTH		DEFLECTION	TOTAL DEFLECTION
		6'LT Offset	6'RT Offset		
12+78.09	-	-	-	00°00'00"	00°00'00"
13+00.00	21.92'	21.78'	-	00°38'41"	00°38'41"
13+25.00	25.00'	24.85'	-	00°44'07"	01°22'48"
13+50.00	25.00'	24.85'	-	00°44'07"	02°06'55"
13+75.00	25.00'	24.85'	-	00°44'07"	02°51'02"
14+00.00	25.00'	24.85'	-	00°44'07"	03°35'10"
14+25.00	25.00'	24.85'	-	00°44'07"	04°19'17"
14+50.00	25.00'	24.85'	-	00°44'07"	05°03'24"
14+72.63	22.63'	22.49'	-	00°39'56"	05°43'19"

Def/Ft = 1.76476 Min.

PLAN LINE 2
SCALE: 1" = 40'



PROFILE LINE 1
SCALE: HORIZ. 1" = 40'
SCALE: VERT. 1" = 5'



PROFILE LINE 2
SCALE: HORIZ. 1" = 40'
SCALE: VERT. 1" = 5'

PLOTTED: Tuesday, December 18, 2007 @ 07:06AM

J:\CIVIL\062007\07165\WTR\07165_C2.DWG

LINES 1 & 2
SHEET TITLE
448-90334
PROJECT NUMBER

DLF
DESIGN BY
JLB
DRAWN BY
GJA
CHECKED BY

ISSUED
December 2007
REVISED

SHEET NO.
4 of 14