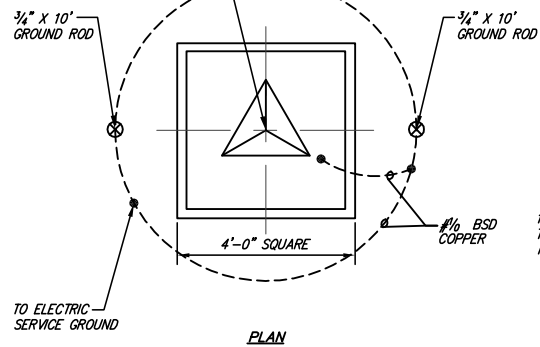
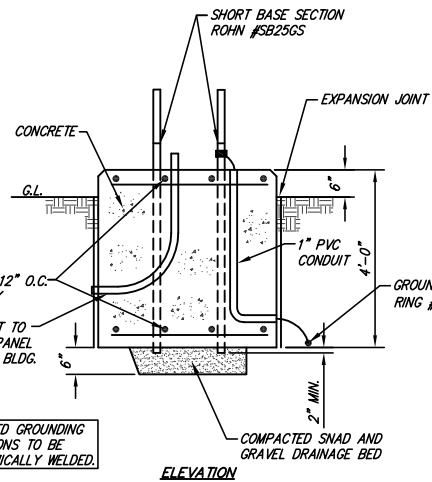


ANTENNA TOWER NOTES:
 TOWER SHALL BE A ROHN MODEL #25G, OR APPROVED EQUAL. CONTRACTOR TO VERIFY WITH BASE SECTION, TWO 10' SECTIONS, AND ONE 9' SECTION (NOMINAL 30 FOOT TOWER).



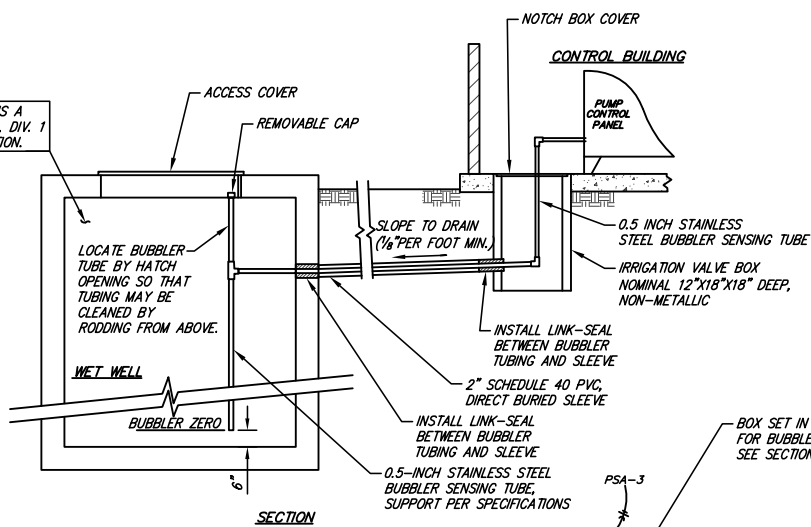
PLAN



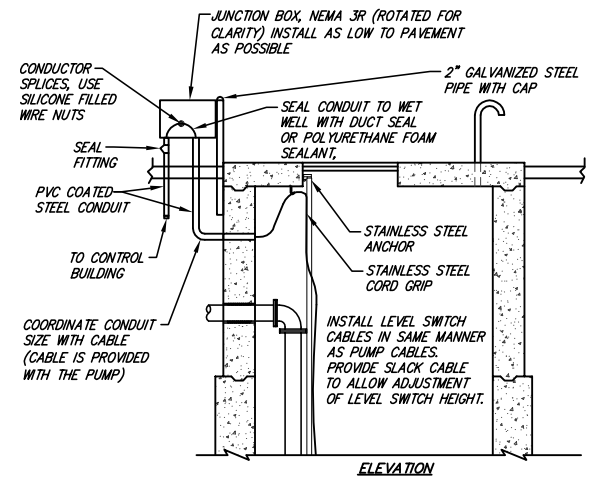
ELEVATION

FOUNDATION TELEMETRY TOWER

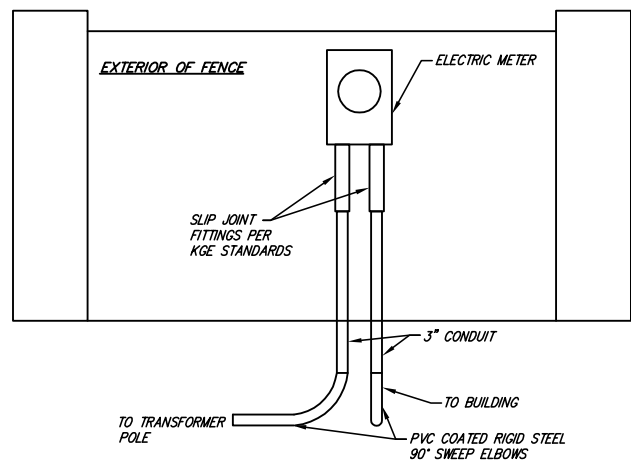
ENTIRE WET WELL IS A CLASS 1, GROUP D, DIV. 1 HAZARDOUS LOCATION.



SECTION

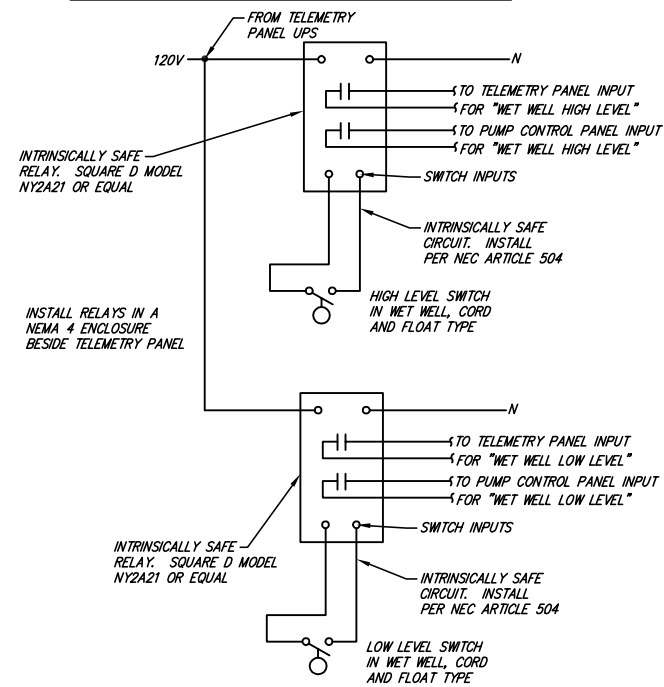


ELEVATION

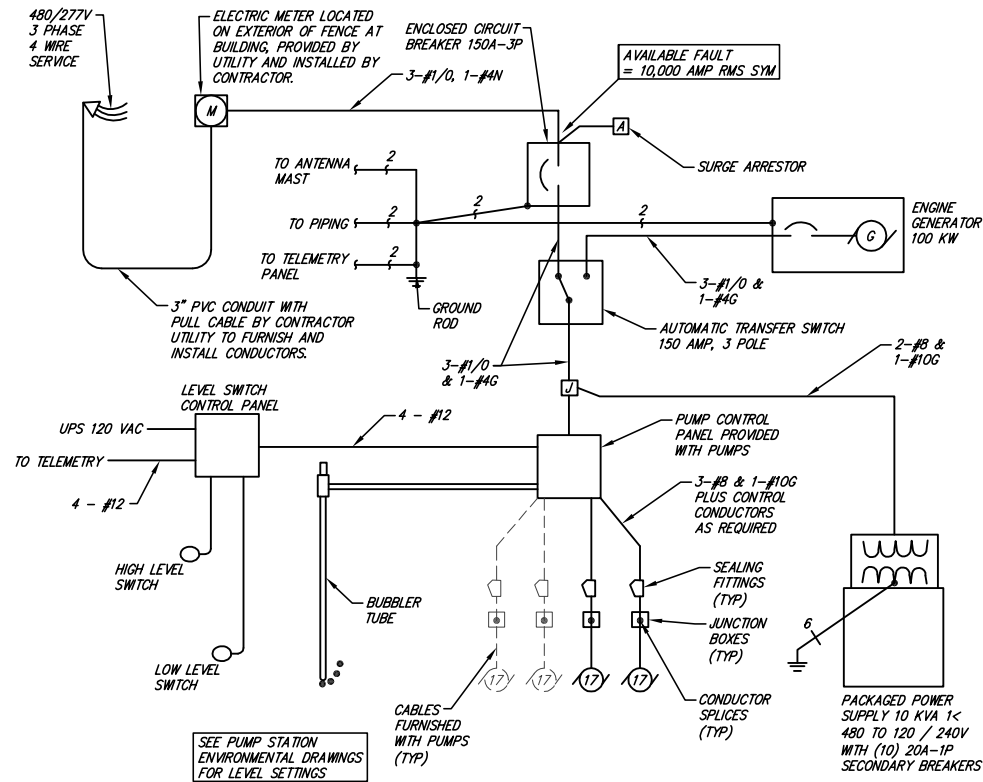


ELEVATION

ELECTRIC METER INSTALLATION



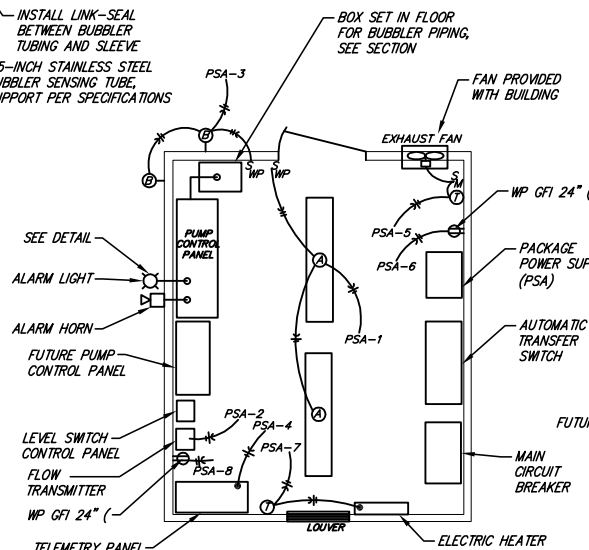
LEVEL SWITCH CONTROL PANEL



ONE LINE DIAGRAM

ELECTRICAL LEGEND

- CONDUIT AND WIRING, ARROWS INDICATE HOMERUN TO PANEL. HATCH MARKS INDICATE NUMBER OF CONDUCTORS IF MORE THAN TWO. NUMBER INDICATES SIZE IF OTHER THAN #12 AWG.
- EQUIPMENT GROUNDING CONDUCTOR IN CONDUIT WITH CIRCUIT(S). NUMBER INDICATES SIZE IF OTHER THAN #12 AWG.
- UG UNDERGROUND CONDUIT AND WIRING.
- DUPLEX RECEPTACLE 20A, NEMA CONFIGURATION 5-20R.
- MOTOR, HP INDICATED
- INDICATES WEATHERPROOF
- POWER POLE
- SURGE ARRESTER



CONTROL BUILDING

EXHAUST FAN CONTROL

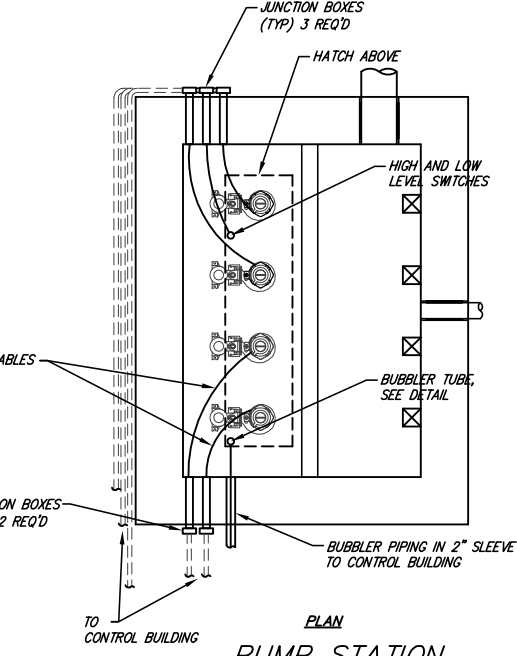
ELECTRIC HEATER CONTROL

GENERAL NOTES:

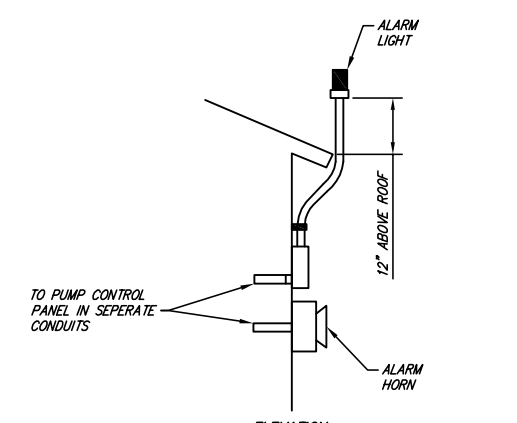
1. COMPLETE ALL WORK IN ACCORDANCE WITH THE NATIONAL ELECTRICAL CODE (NEC), NATIONAL ELECTRICAL SAFETY CODE (NESC), AND LOCAL REGULATIONS.
2. ALL ELECTRICAL EQUIPMENT SHALL BE U.L. LISTED.
3. SEE SPECIFICATIONS FOR ADDITIONAL REQUIREMENTS.
4. THE CONSTRUCTION DRAWINGS ARE DIAGRAMMATIC IN NATURE AND SHOW RELATIVE LOCATIONS OF DEVICES AND EQUIPMENT. COORDINATE WITH THE ACTUAL EQUIPMENT INSTALLED.
5. COORDINATE ELECTRICAL WORK WITH THE WORK OF OTHER TRADES.
6. CONTRACTOR IS RESPONSIBLE TO LOCATED AND PROTECT UTILITY LINES AND PIPING IN THE AREA UNDER CONSTRUCTION.
7. ALL STARTERS AND CONTRACTORS SHALL HAVE 120 VOLT CONTROLS. PROVIDE FUSED CONNECTION FOR UNITS OPERATING AT 120 VOLTS LINE TO NEUTRAL. PROVIDE FUSED CONTROL POWER TRANSFORMERS FOR UNITS OPERATING ABOVE 120 VOLTS.
8. ALL CHARGES FROM KGE TO INSTALL AND/OR MODIFY ELECTRIC SERVICE TO THESE FACILITIES WILL BE PAID BY THE CONTRACTOR.
9. A #2 BSD COPPER GROUND CONDUCTOR SHALL BE INSTALLED TO PIPING IN VALVE VAULT, 30" MIN. DEPTH.

TELEMETRY NOTES:

1. ALL TELEMETRY EQUIPMENT SHALL MEET CITY OF WICHITA SPECIFICATIONS.
2. CONTRACTOR TO COORDINATE WITH ROBERT BIGLEY AT 269-4769 FOR TELEMETRY SETTINGS.
3. INSTALL OWNER PROVIDED COAXIAL CABLE BETWEEN TELEMETRY PANEL AND ANTENNA.
4. OWNER WILL PROVIDE HARDWARE AND SOFTWARE MODIFICATIONS TO TELEMETRY PANEL.



PUMP STATION



ALARM LIGHT AND HORN DETAIL

**MAIN 23 SW INTERCEPTOR SEWER
 ELECTRICAL SECTIONS AND DETAILS
 WICHITA SEDGWICK COUNTY KANSAS**

Ruggles & Bohm, P.A.
 Engineering, Surveying, Land Planning

924 North Main
 Wichita, Kansas 67203
 www.rbkansas.com

(316) 264-8008
 (316) 264-4821 fax
 E-mail: info@rbkansas.com

DESIGN: KWL
 DRAWN: KWL
 REVIEW: KWL
 UTILITY
 DATE: July 12, 2006

SHEET 12 OF 16

DRAWING FILE: lift station
 PROJECT NUMBER: 468-84141