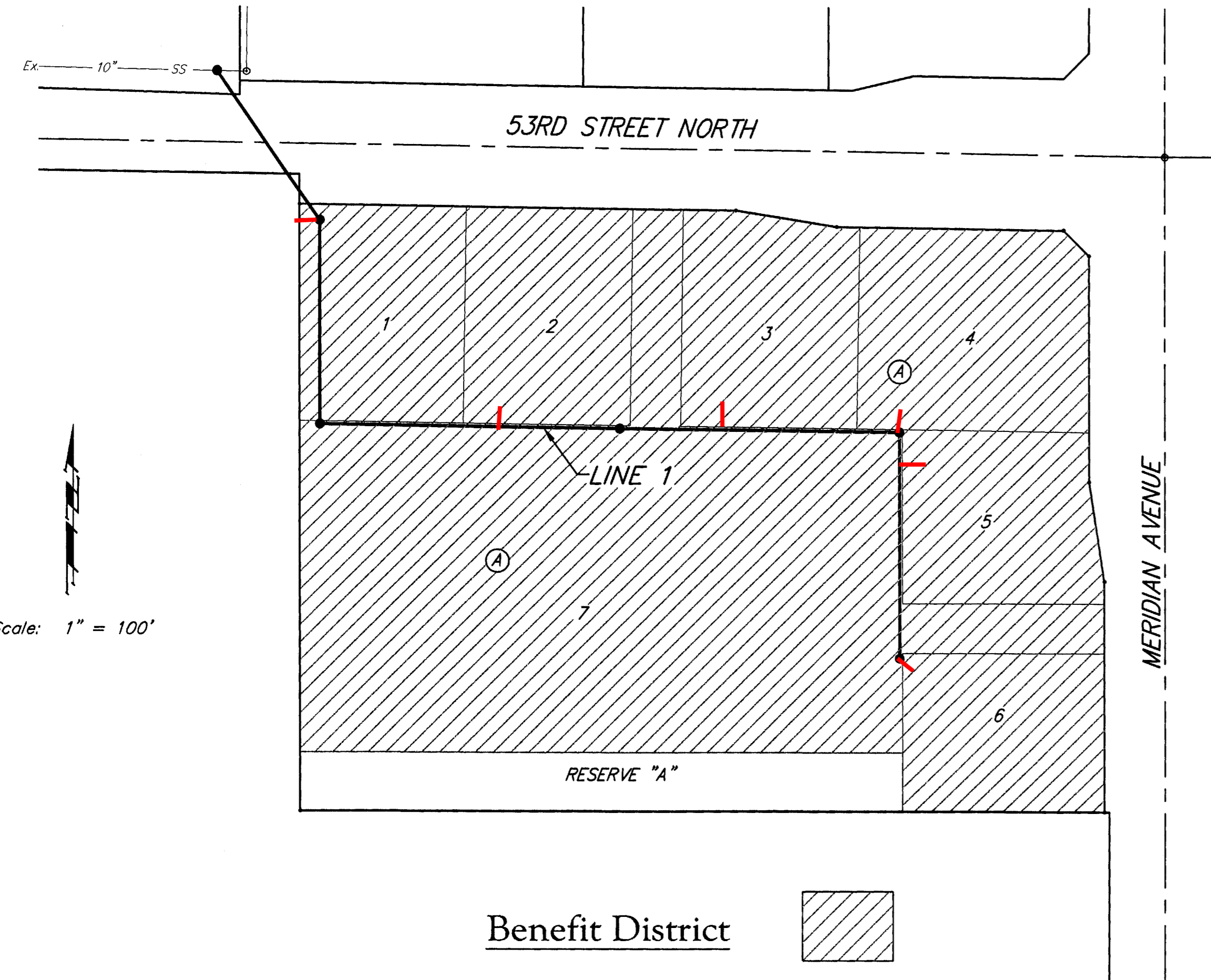


Lateral 9, Main 15, SS#23
 SANITARY SEWER IMPROVEMENTS
 to serve

JOHNSON COMMERCIAL CENTRE ADD.

CITY OF WICHITA, KANSAS

James L. Armor, P.E. City Engineer
 Project Number
 468-84304
 O.C.A. Number
 744231



SHEET INDEX

Title Sheet	1
Line 1	2-3
Standard Manhole Detail	4
Ring and Cover Detail	5
Vertical Riser Detail	6
E.C. Plan/Coordinate Sheet	7
E.C. BMP Details	8-11
Copy of Plat	12

BENCHMARK

COW Benchmark at the Intersection
 of Meridian and 53rd St. N., NE
 Corner, Top of Concrete Headwall
 44' North of Centerline
 37' East of Centerline
 50.90' NE of Section Corner
 9' NE of and Radial to Curb
 26' East of Section Line
 Elev. = 1331.37 NGVD29

GENERAL NOTES:

- Contractor will be required to provide notice to utility companies a minimum of forty-eight (48) hours prior to any excavation, as follows:

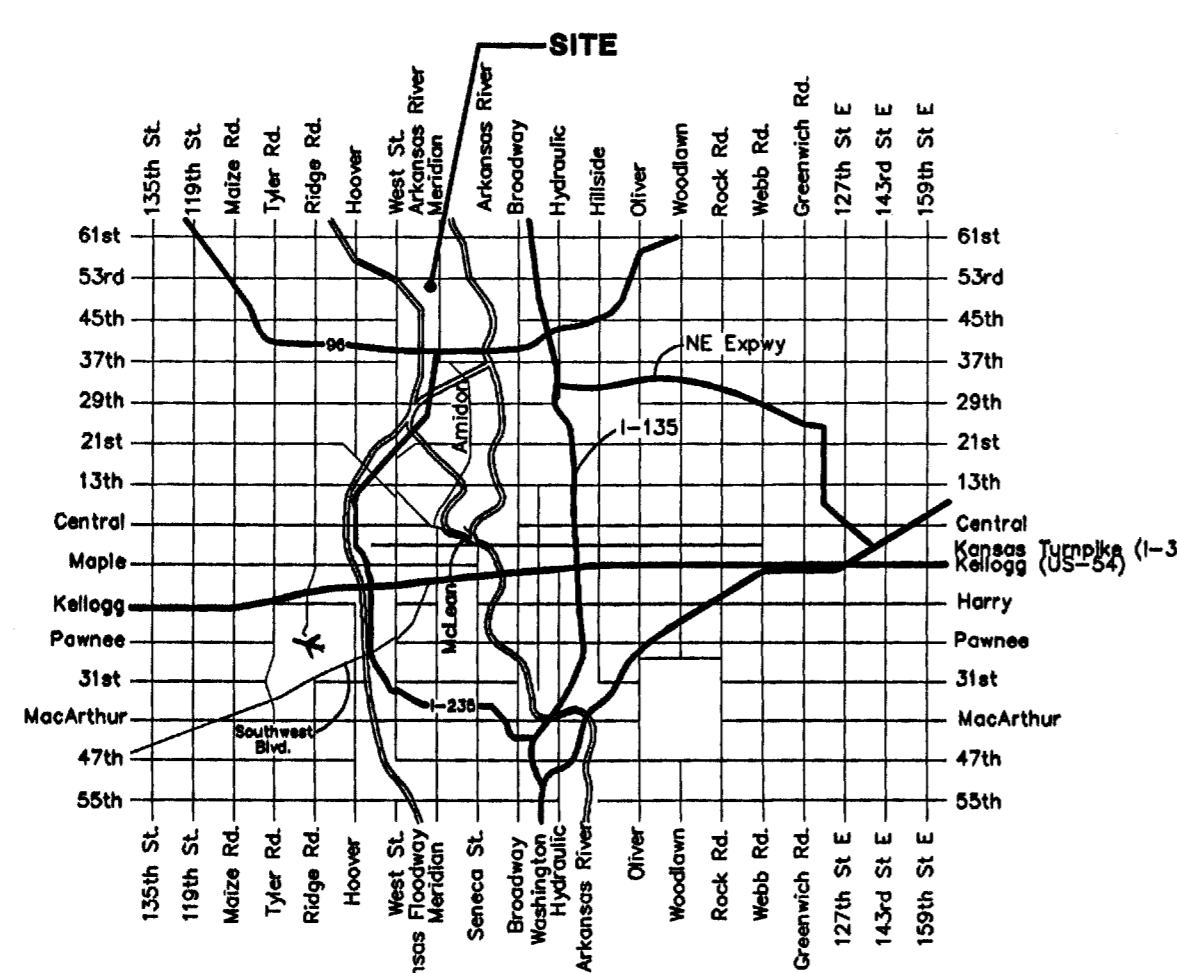
Kansas One-Call	687-2470
-----------------	----------

The Contractor must notify the following in case of an emergency:

Cox Communications	262-4270
Kansas Gas Service	1-888-482-4950
Westar Energy	383-8650
Aquila Energy	1-800-303-0357
AT&T	268-2245
City of Wichita Water Dept.	268-4563
City of Wichita Sewer Maint.	268-4024
City of Wichita Storm Sewer Maint.	268-4090
City of Wichita Traffic Maint.	268-4034
- Utility service lines, poles, valve boxes, meters, and etcetera are to be adjusted as necessary by others prior to construction unless the plans specifically call for their adjustment by the Contractor or unless the plans specifically identify a utility to be adjusted by its owner during construction. Existing utilities and their location, as shown on the plans, represent the best information obtainable for design. The Contractor will be required to work around existing utilities within the right-of-way which do not conflict with proposed construction.
- Rubble from the removal of miscellaneous structures and excess excavation which is to be wasted shall be disposed of on sites to be provided by the Contractor. These sites shall be approved by the Engineer as to suitability, appearance and site location. Locations, in the opinion of the Engineer, that will leave an unsightly appearance will not be approved. All disposal sites must be approved by the Kansas Department of Health and Environment. Material either stockpiled or disposed of in a flood plain would require a Kansas State Board of Agriculture permit. Any material dumped in waters of the United States or wetlands is subject to U.S. Corps. of Engineers permitting regulations. Any material buried or stockpiled beyond approved construction limits would require additional archaeological investigations unless buried in a previously approved borrow location.
- Unless specifically noted on plans, trees and shrubs in public right-of-way which are in direct conflict with proposed new construction shall be removed by the Contractor ONLY with the Developer or Baughman Company approval. Trees and shrubs which are not in direct conflict with proposed new construction shall be saved and protected from damage. Trees that must be trimmed shall be trimmed with a chainsaw.
- The Contractor shall give all property owners and/or tenants of developed property abutting the construction of this project a minimum of ten (10) days notice prior to start of construction.
- The Contractor shall be responsible for preserving property irons. The Contractor will be required to re-establish any property irons which are damaged or destroyed by his construction operations. Such irons shall be re-established by a licensed land surveyor in accordance with state laws.
- All existing and proposed erosion control measures including silt fencing, erosion control mat, straw bales, inlet barriers, and const. entrance shall be maintained throughout construction by the contractor and until project is accepted by the City of Wichita. The on-site engineer shall complete weekly reports on the status of erosion control measures. The contractor shall be required to comply with maintenance and/or replacement of erosion control measures as determined by the on-site engineer until project is accepted by City of Wichita.
- The Contractor shall be responsible for maintaining continuous flow of sewage through construction. Contractor's proposed method for maintaining sewage flow shall be approved by the Engineer. Cost of maintaining flow of sewage through construction will not be paid for directly and this cost shall be considered as subsidiary to the other pay items of work.
- Contractor shall grade around exposed manholes at a 1:1 slope. Manholes set lower than existing grade shall have a 9" berm constructed around manhole to prevent infiltration into sanitary sewer system. Cost of dirt, labor, equipment, etc. to be incidental to cost of manhole. Easements shall be graded with the Storm Water Drain project.
- Contractor shall regrade all disturbed areas and shall restore site to pre-construction grades. Cost of regrading shall be incidental to site clearing and restoration.
- All areas disturbed during construction within 53rd St. N. Right-of-way shall be seeded, mulched, and fertilized as follows (Permanent Seeding):

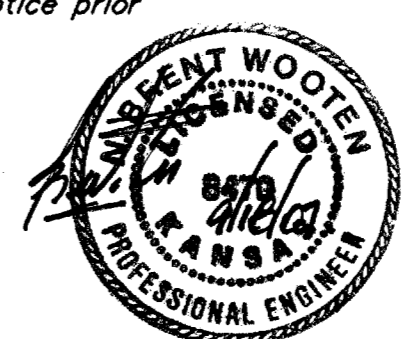
Seed:	Kansas Premium Fescue Blend: 8 lbs./1000 sq. ft. Annual Rye: 4 lbs./1000 sq. ft.
Mulch:	Prairie Hay: 2 tons/acre
Fertilizer:	12-24-12: 850 lbs./acre

The remaining areas disturbed by construction shall be seeded at 300 lbs./acre with Rye Grass immediately following construction in that area. All costs associated with seeding, mulching, and fertilizing shall be included in bid item "Project Seeding." All seeding operations shall conform to the project specifications.
- No work shall begin on the project until the Notice of Intent and Storm Water Pollution Prevention Plan have been approved by KDHE and signed by the contractor.



Vicinity Map

Mies Construction, Inc. - Contractor
 Weigant, City - Inspector
 Released 12/1/07
 As-Built
 Risers & Stubs
 .pdf by JDL 12/4/07



Baughman
 Baughman Company, P.A. 315 Ellis St. Wichita, KS 67211 P 316-262-7271 F 316-262-0149
 ENGINEERING | SURVEYING | PLANNING | LANDSCAPE ARCHITECTURE