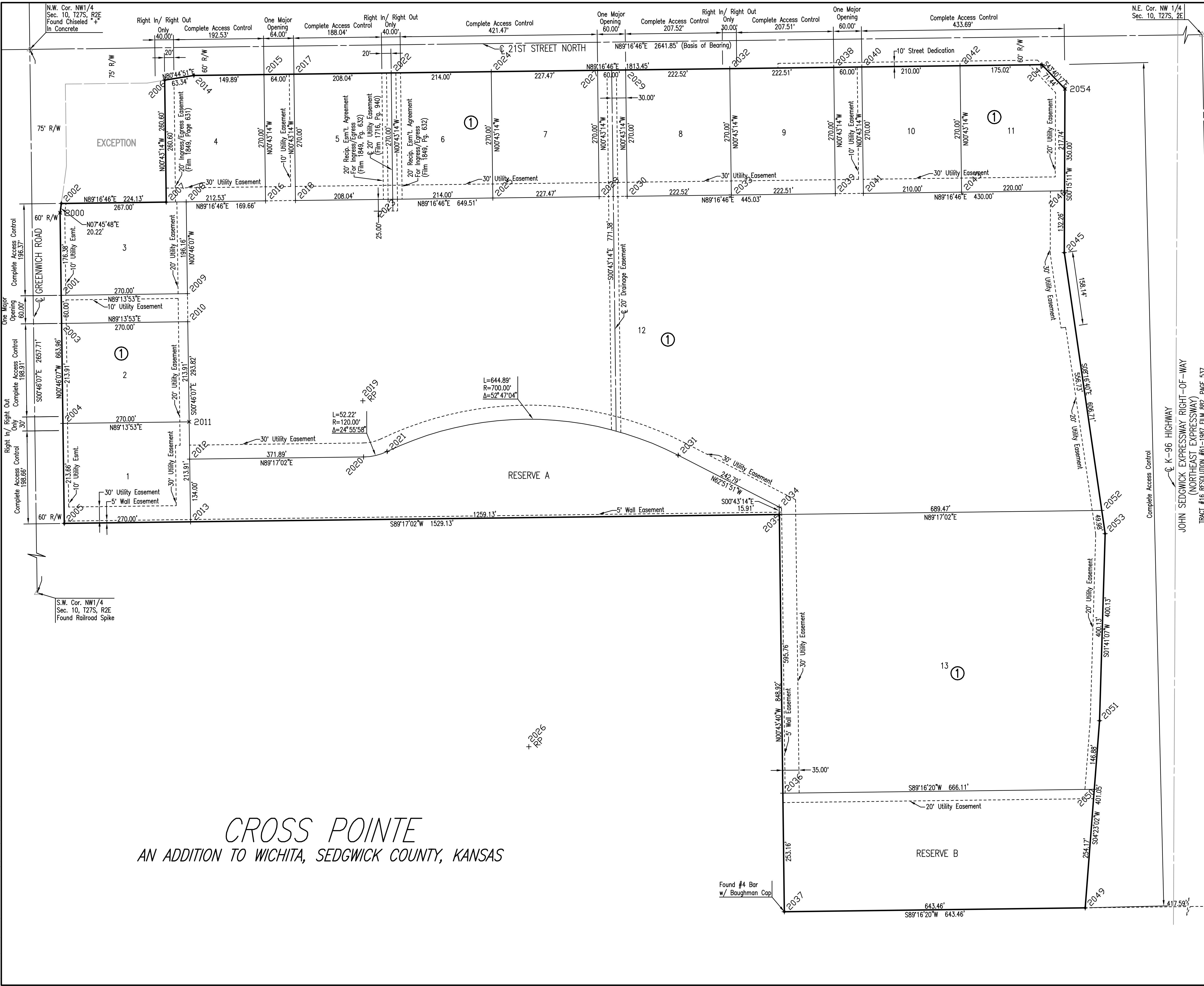


Saved: 01-20-2006 11:31:46 AM by: JCA
 Plot Scale: 1:100 01-24-2006 12:42:53 PM by: BEJ
 J:\SENT001\2005\05548\2005-01-24 to City_Sanitary Sewer\DWG 03-Cross Pointe Plat



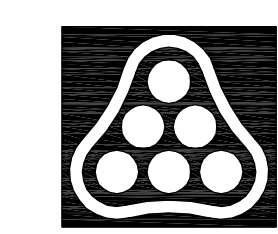
CROSS POINTE
 AN ADDITION TO WICHITA, SEDGWICK COUNTY, KANSAS

SCALE: 1" = 100'
 BENCHMARK #4: CHISELED SQUARE ON CONCRETE BASE TRAFFIC SIGNAL POLE AT S.W. CORNER 21ST AND GREENWICH.
 ELEV. = 176.16 C.O.W. DATUM

LEGEND
 • 1/2" REBAR W/PEC CAP UNLESS OTHERWISE NOTED
 △ Section Corner

Pt. #	COORDINATE TABLE	
	NORTHING	EASTING
2000	1699445.414864	1686282.097276
2001	1699269.047146	1686284.463355
2002	1699465.450799	1686284.828750
2003	1699209.052545	1686285.268219
2004	1698995.158710	1686288.137733
2005	1698781.514605	1686291.003896
2006	1699728.851070	1686505.663761
2007	1699468.269398	1686508.941027
2008	1699468.808521	1686551.807732
2009	1699272.669032	1686554.439061
2010	1699212.674431	1686555.243925
2011	1698998.780596	1686558.113439
2012	1698918.877112	1686559.185392
2013	1698784.889113	1686560.982921
2014	1699739.035837	1686568.184271
2015	1699740.920814	1686718.062418
2016	1699470.942165	1686721.457866
2017	1699741.725661	1686782.057357
2018	1699471.747012	1686785.452805
2019	1699043.515628	1686929.542052
2020	1698923.525001	1686931.041832
2021	1698935.339951	1686981.484548
2022	1699744.341917	1686990.080906
2023	1699474.363268	1686993.476354
2024	1699747.033125	1687204.063983
2025	1699477.054476	1687207.459431
2026	1698304.315168	1687284.482441
2027	1699749.893707	1687431.514430
2028	1699479.915058	1687434.909879
2029	1699750.648252	1687491.509686
2030	1699480.669603	1687494.905134
2031	1698927.265063	1687603.752591
2032	1699753.446624	1687714.013654
2033	1699483.467975	1687717.409103
2034	1698816.530346	1687819.814695
2035	1698800.625937	1687820.014720
2036	1698204.911458	1687827.581963
2037	1697951.772809	1687830.797533
2038	1699756.244851	1687936.506058
2039	1699486.266202	1687939.901507
2040	1699756.999395	1687996.501314
2041	1699487.020746	1687999.896762
2042	1699759.640299	1688206.484708
2043	1699489.661650	1688209.880156
2044	1699761.841356	1688381.494935
2045	1699360.168576	1688429.279439
2046	1699492.428322	1688429.863589
2049	1697959.945894	1688474.205625
2050	1698213.372185	1688493.634033
2051	1698359.822537	1688504.861350
2052	1698809.243072	1688509.432566
2053	1698759.779460	1688516.628935
2054	1699710.168466	1688430.825277

× 1000 = COORDINATE POINT NO.



No.	Revision	By	Date
LATERAL 5, MAIN 16 FOUR MILE CREEK SEWER PLAT JAMES L. ARMOUR, P.E. - CITY ENGINEER CITY OF WICHITA PROJECT NO. 468-84044 Professional Engineering Consultants, P.A. 303 S. TOPEKA • WICHITA, KANSAS 67202 316-262-2691 • FAX 316-262-3003			
Designed by	Job No. 35-05548-2-042	Sht. 3 of 13	
Drawn by	Date October 2005		