

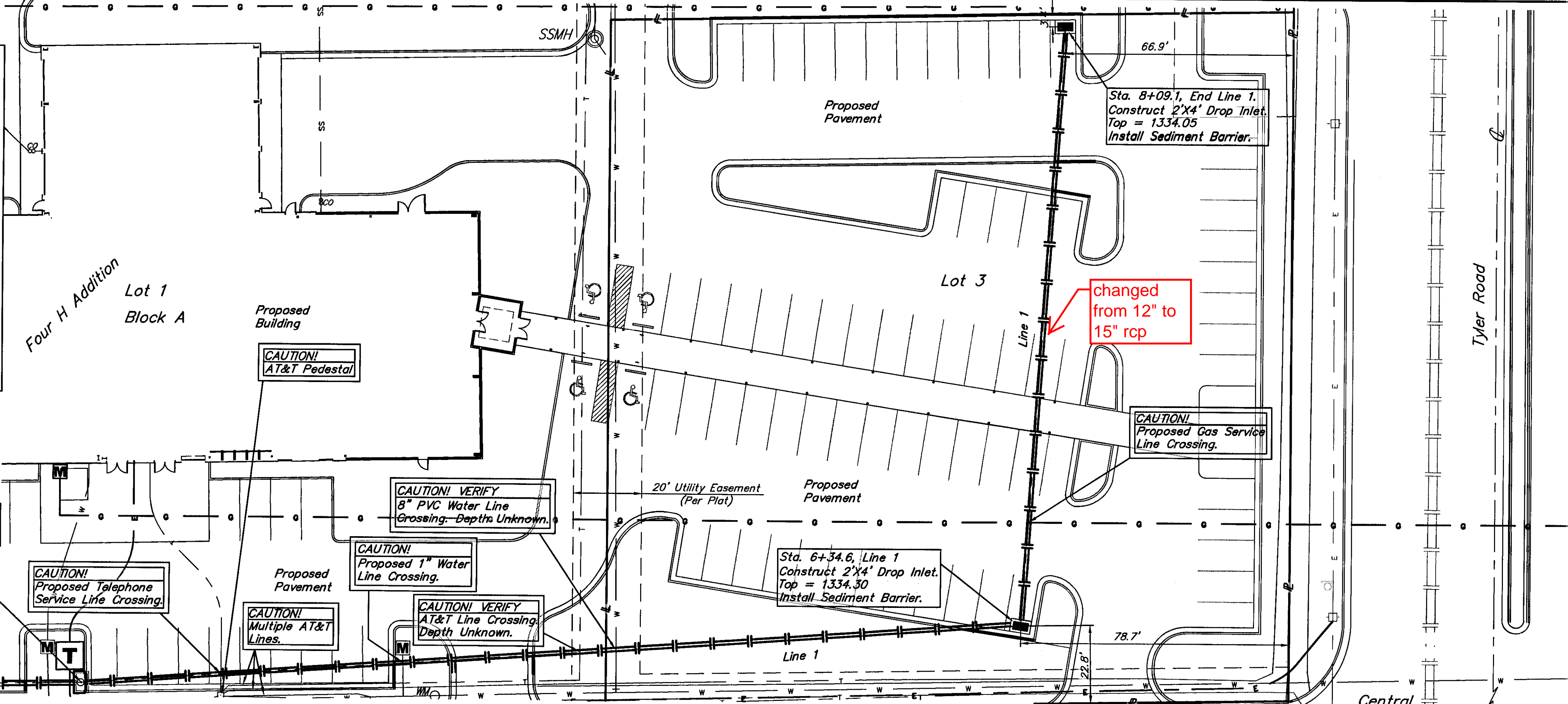
- NOTES:**
1. TOEWALLS SHALL BE INSTALLED AT LOCATIONS SHOWN IN THE DETAIL.
 2. GROUTING OF THE SURFACE RIPRAP SHALL NOT BE PERFORMED.
 3. ALL RIPRAP FOR THIS PROJECT SHALL BE NATURAL STONE. NEITHER CONCRETE, FABRIC ENVELOP, NOR PREMIXED DRY PACKAGE CONC. BAG ALTERNATED WILL BE ALLOWED.
 4. THE RIPRAP TOEWALL SHALL BE GROUTED IN PLACE FOR THE FULL DEPTH, EXCEPT THE SURFACE.

Four H Addition
Lot 1
Block A

sta.3+59.1
moved 5'
north
Sta. 3+59.1, Line 1.
Match Point.
Extend 12" RCP Northeast

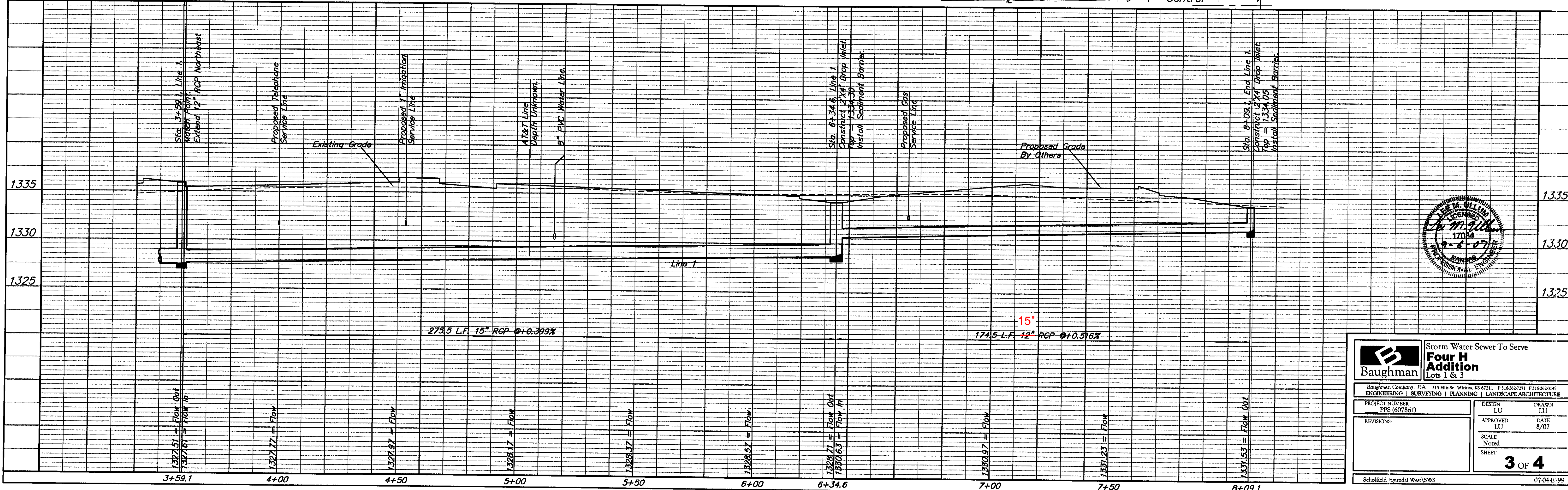
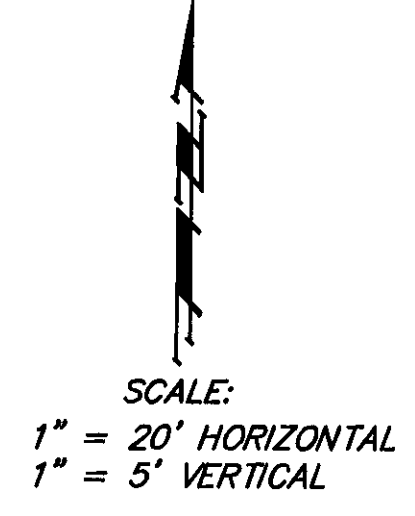
BENCHMARK

"□" Chiseled on top of inlet north of the north access drive.
Elev. = 1333.66 NGVD29



Contractor To Use Extreme Caution When Excavating Near Utility Lines. Contractor To Hand Dig To Expose All Utility Lines Prior To Construction. Verify Depth To Determine Conflict If Any.

Contractor Shall Follow All Applicable Best Management Practices (BMP) For Erosion Control.



Baughman Storm Water Sewer To Serve
Four H Addition
Lots 1 & 3

Baughman Company, P.A. 315 Ellis St. Wilkes, KS 67211 P 316-2623271 F 316-2620146
ENGINEERING | SURVEYING | PLANNING | LANDSCAPE ARCHITECTURE

PROJECT NUMBER: PPS (607861) DESIGNER: LU DRAWN: LU
APPROVED: LU DATE: 8/07

REVISIONS: SCALE: Noted SHEET: 3 OF 4

Scholfield Hyundai West/SWS 07-04-E799