

**SPANGENBERG PHILLIPS
ARCHITECTURE**
121 N. Mead, Suite 201, Wichita, KS 67202
TEL: 316.267.4002 FAX: 316.267.1509
www.spangenbergphillips.com

**BUILDING C - LAKESIDE AT THE WATERFRONT
VANTAGE POINT PROPERTIES**
WICHITA, KANSAS

JUNE 2007

FIRE SERVICE
PLAN & PROFILE

C-7

PROJECT SITE GENERAL NOTES

- ALL WATER MAINS AND APPURTENANCES SHALL BE INSTALLED IN ACCORDANCE WITH CITY OF WICHITA, KANSAS STANDARD SPECIFICATIONS FOR WATER MAIN INSTALLATIONS.
- CONTRACTOR WILL BE REQUIRED TO PROVIDE A MINIMUM ADVANCE NOTICE OF SEVENTY-TWO (72) HOURS TO UTILITY COMPANIES PRIOR TO STARTING ANY EXCAVATION AS FOLLOWS:
KANSAS ONE-CALL 1-800-344-7233
OR LOCAL (WICHITA) 687-2470

THE CONTRACTOR MUST NOTIFY THE FOLLOWING IN CASE OF EMERGENCY:

COX COMMUNICATIONS (CABLE)	262-0661
WESTAR (ELECTRIC)	281-8512
KANSAS GAS SERVICE (GAS)	832-3101
SBC (TELEPHONE)	800-870-8390
CITY OF WICHITA WATER & SEWER	262-6000
AQUILA (GAS)	948-0096

- THE WATER MAIN SHALL BE CONSTRUCTED ON THE ALIGNMENT SHOWN ON THE PLANS. TREES AND SHRUBS IN PUBLIC RIGHT OF WAY WHICH ARE IN DIRECT CONFLICT WITH PROPOSED NEW CONSTRUCTION SHALL BE REMOVED BY THE CONTRACTOR WITH THE ENGINEER'S APPROVAL AND SHALL BE INCLUDED IN THE PRICE BID FOR THE INSTALLED WATER PIPE. TREES AND SHRUBS WHICH ARE NOT IN DIRECT CONFLICT WITH PROPOSED CONSTRUCTION SHALL BE SAVED AND PROTECTED FROM DAMAGE.

- OPENING AND CLOSING WATER VALVES SHALL BE DONE SLOWLY TO PREVENT DAMAGE TO THE WATER DISTRIBUTION SYSTEM FROM WATER HAMMER. ALL VALVES CLOSED BY THE CONTRACTOR MUST BE REOPENED AS NEW CONSTRUCTION PERMITS. PROJECT INSPECTOR MUST ASCERTAIN THAT ANY VALVE CLOSED BY THE CONTRACTOR IS REOPENED. CONTRACTOR WILL BE PERMITTED TO OPERATE WATER VALVES ONLY WHEN THE PROJECT INSPECTOR ASSIGNED TO THE PROJECT IS PRESENT.

- CONTRACTOR SHALL NOT START WORK ON THE PROJECT UNTIL THE PROJECT INSPECTOR IS ASSIGNED TO THE PROJECT AND IS PRESENT ON THE SITE. ANY WORK DONE WITHOUT INSPECTION WILL BE REQUIRED TO BE UNCOVERED FOR INSPECTION.

- UNDERGROUND UTILITY SERVICE LINES AND OVERHEAD UTILITY POLE LINES ARE TO BE ADJUSTED AS NECESSARY BY OTHERS PRIOR TO CONSTRUCTION UNLESS THE PLANS SPECIFICALLY CALL FOR THEIR ADJUSTMENT BY THE CONTRACTOR. EXISTING UTILITIES AND THEIR LOCATION, AS SHOWN ON THE PLANS, REPRESENT THE BEST INFORMATION OBTAINABLE FOR DESIGN. LOCATION INFORMATION HAS BEEN OBTAINED FROM THE VARIOUS UTILITY COMPANIES AND IS EITHER FROM COMPANY RECORD DRAWINGS OR COMPANY PROVIDED FIELD LOCATIONS. THE CONTRACTOR WILL BE REQUIRED TO WORK AROUND EXISTING UTILITIES WITHIN THE RIGHT-OF-WAY WHICH DO NOT CONFLICT WITH PROPOSED CONSTRUCTION.

- THE CONTRACTOR SHALL GIVE ALL PROPERTY OWNERS AND/OR TENANTS OF DEVELOPED PROPERTY DIRECTLY ADJUTING CONSTRUCTION OF THIS PROJECT A MINIMUM OF TEN (10) DAYS NOTICE PRIOR TO START OF CONSTRUCTION.

- THE CONTRACTOR SHALL BE RESPONSIBLE FOR PRESERVING PROPERTY IRONS WHICH ARE DAMAGED OR DESTROYED BY HIS CONSTRUCTION OPERATIONS. SUCH IRONS SHALL BE RE-ESTABLISHED BY A LICENSED LAND SURVEYOR IN ACCORDANCE WITH STATE LAWS. ALL COSTS FOR THIS WORK SHALL BE SUBSIDIARY TO SITE RESTORATION.

- THE CONTRACTOR SHALL RESTORE ALL DITCHES, SWALES, ROAD SHOULDERS, ENTRANCES AND BANK LINES TO THEIR ORIGINAL SLOPES AND GRADES EXCEPT AS SHOWN OTHERWISE.

- INTERURBAN TRAFFIC GENERATED OUTSIDE THE PROJECT AREA, AND LOCAL BUSINESS OR RESIDENTIAL TRAFFIC GENERATED WITHIN THE PROJECT AREA ARE TO BE CARRIED THROUGH CONSTRUCTION AS FURTHER PROMULGATED BY PROJECT SPECIAL PROVISIONS.

- RUBBLE FROM THE REMOVAL OF MISCELLANEOUS STRUCTURES INCLUDING ANY TREES REMOVED AND TREE TRIMMINGS SHALL BE DISPOSED OF ON SITES TO BE PROVIDED BY THE CONTRACTOR. THESE SITES SHALL BE APPROVED BY THE ENGINEER AS TO SUITABILITY, APPEARANCE AND SITE LOCATION. LOCATIONS THAT, IN THE OPINION OF THE ENGINEER, WILL LEAVE AN UNSIGHTLY APPEARANCE WILL NOT BE APPROVED. ALL DISPOSAL SITES MUST BE APPROVED BY THE KANSAS DEPARTMENT OF HEALTH AND ENVIRONMENT. MATERIAL EITHER STOCKPILED OR DISPOSED OF IN A FLOOD PLAIN WOULD REQUIRE A KANSAS STATE BOARD OF AGRICULTURE PERMIT. ANY MATERIAL DUMPED IN WATERS OF THE UNITED STATES OR WETLANDS IS SUBJECT TO U.S. CORPS OF ENGINEERS PERMITTING REGULATIONS. ANY MATERIAL BURIED OR STOCKPILED BEYOND APPROVED CONSTRUCTION LIMITS WOULD REQUIRE ADDITIONAL ARCHAEOLOGICAL INVESTIGATIONS UNLESS BURIED IN A PREVIOUSLY APPROVED BORROW LOCATION.

- THE CONTRACTOR SHALL LAY A TRACER WIRE & SET TEST STATIONS ALONG ALL WATER LINE PIPE INSTALLED IN ACCORDANCE WITH CITY OF WICHITA SPECIFICATIONS & TRACER WIRE DETAIL ON DETAIL SHEET. COST IS SUBSIDIARY TO PIPE INSTALLATION.

BENCHMARKS

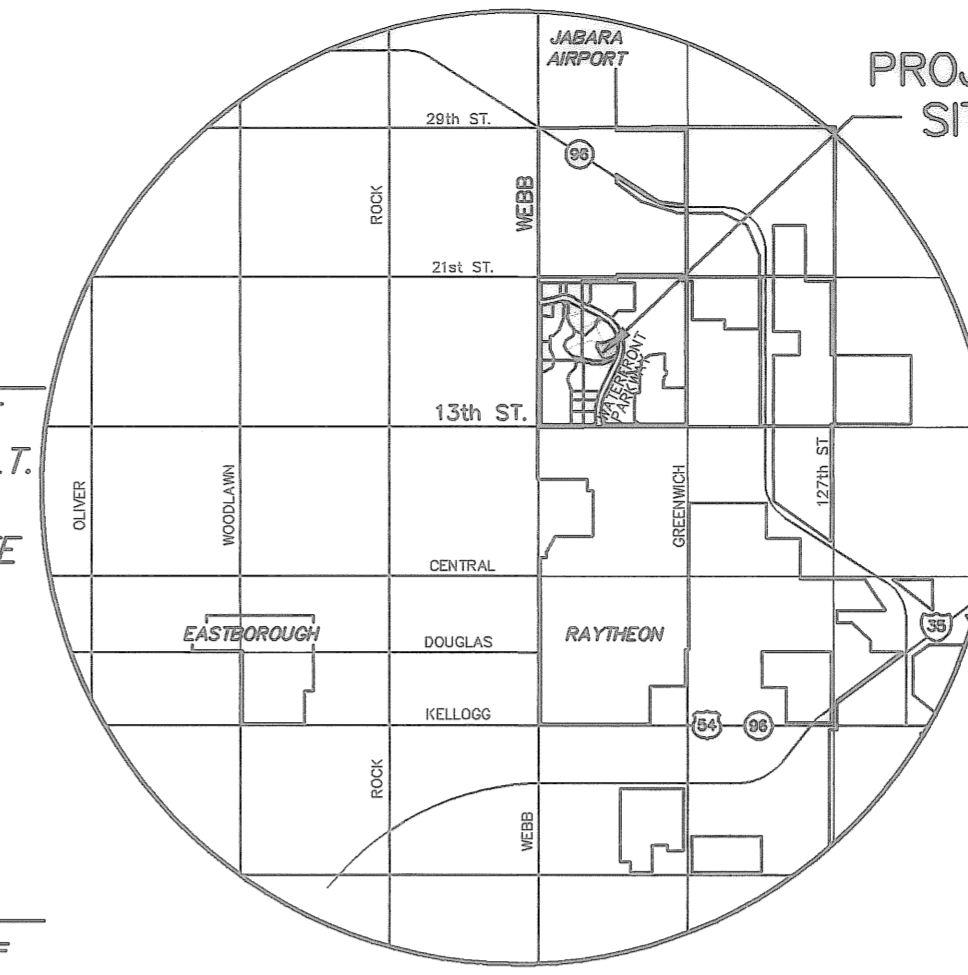
- BM #1 Brass disk in top of curb on South side of inlet on the West side of Waterfront Parkway, First bridge north of 13th Street North
Elevation = 1376.80
- BM #2 Chiseled square on top of curb, East end of the second island West of the first entrance East of First bridge, North of 13th Street North.
Elevation 1380.69

As Built Plans
Inspector: MIES Construction
Inspector: Robert Previterra, Reiss & Goodness, Inc.
.pdf by: R. P., 1-02-08



**CITY OF WICHITA
PRIVATE PROJECT
NO. 1330PPW (607853)**

**NOTE:
WATER LINE VALVES TO BE OPERATED BY
CONTRACTOR ONLY IF WATER INSPECTOR
IS ON SITE.**



VICINITY MAP
NO SCALE

WATER COORDINATE TABLE

1	N 1695897.48	E 1682368.70
2	N 1695897.12	E 1682365.72
3	N 16955896.81	E 1682363.24
4	N 1695896.21	E 1682358.22
5	N 1695818.09	E 1682219.59
6	N 1695806.31	E 1682225.92

PL COORDINATE TABLE

20	1695634.76	1681609.17
21	1695747.18	1681486.02
22	1695866.86	1681688.09
23	1695862.26	1681775.07
24	1695882.95	1681812.81
25	1695913.58	1682018.47
26	1695909.26	1682039.13
27	1695903.76	1682065.43
28	1695906.63	1682159.21
29	1695922.69	1682199.79
30	1695983.31	1682351.30
31	1695994.48	1682390.81
32	1695696.73	1682390.41
33	1695634.37	1682268.25
34	1695591.12	1682152.42
35	1695582.13	1681937.17
36	1695815.49	1682019.53

BY CITY ENGINEER OF WICHITA &
BY WICHITA FIRE DEPARTMENT
APPROVED AS NOTED

Public Works *9-7-07*

Water & Sewer *9-7-07*

Fire Dept. *WFD/RLI 9-7-07*

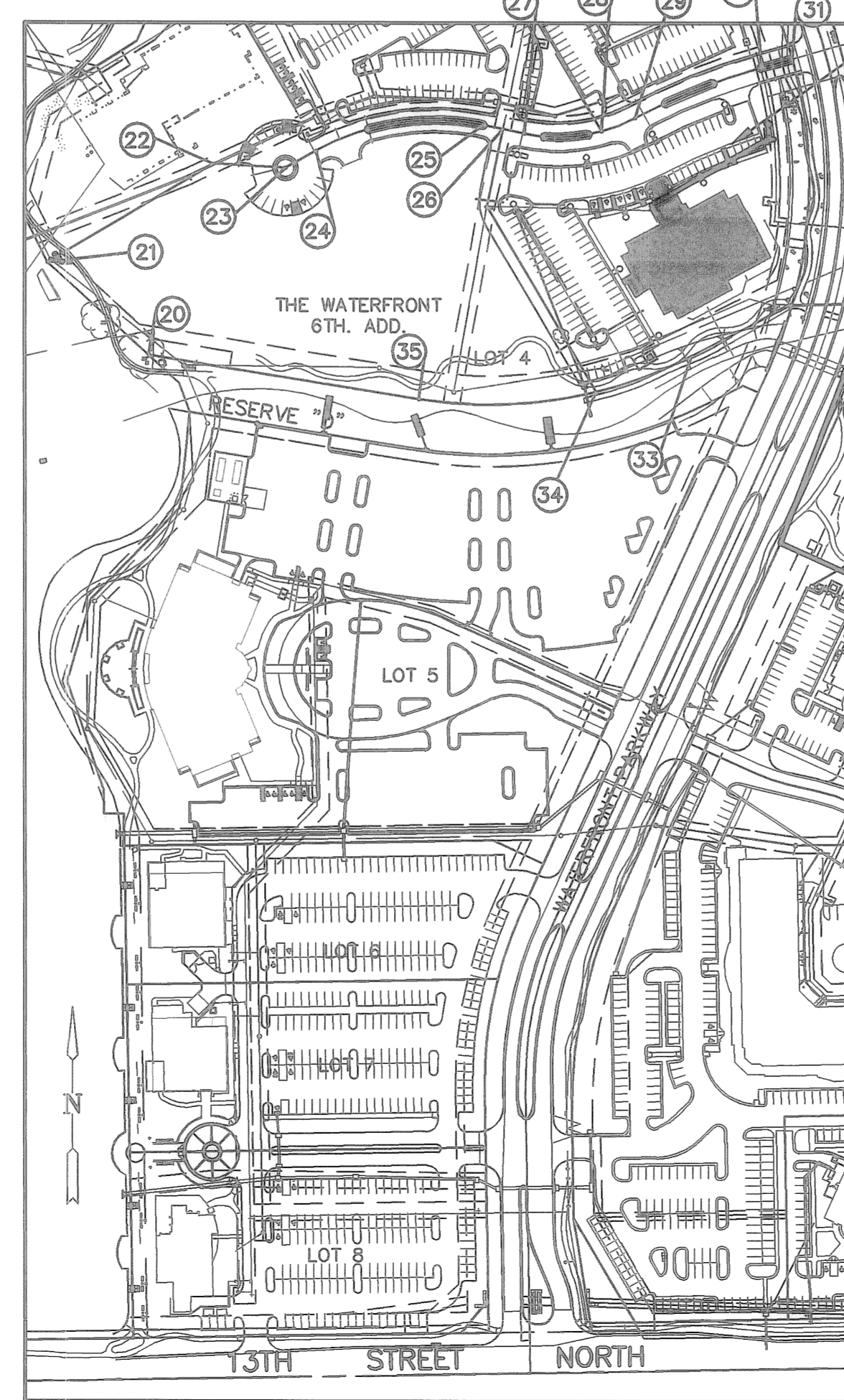
NOTE TO CONTRACTORS

Public Property:

Inspection and supervision of testing for the waterline is to be provided by a Licensed Consulting Engineering Firm under contract with the Owner/Developer. Said inspection to be in accordance with the City of Wichita Standard Construction Engineering Practice and certified by a Licensed Professional Engineer. No work shall be performed in dedicated easements or public right-of way by the Contractor without such inspection nor shall any work be commenced without written authorization by the City Engineer. All Construction and Materials shall comply with the City of Wichita Specifications and Standards (on file and available in the City Engineer's Office).

Private Property:

Installation and testing for the fire protection line is to be performed by a City of Wichita Licensed Fire Protection Contractor in accordance with the fire codes as adopted by the City of Wichita. All materials and construction practices for the fire protection line shall comply with the fire codes as adopted by the City of Wichita (available from the City of Wichita Fire Department). The Contractor shall not commence work without notification to and approval of the Wichita Fire Department. Inspection of the fire protection line is to be provided by a licensed engineering firm under contract with the Owner/Developer and the Fire Department. The contractor shall not start work until the project inspector is assigned to the project and present on the site. Any work done without inspection will be required to be uncovered for inspection.



LOCATION MAP

SCALE: 1"=150'

RELOCATE FIRE HYDRANT TO STA. 10+12.00, FIRE SERVICE INSTALL 6" MJ PLUG IN EXISTING VALVE

NOTE: BACKFLOW PREVENTER LOCATED IN BUILDING.

FIRE DEPT. CONNECTION

STA. 11+82.95, FIRE SERVICE
BL STA. 14+58.06, 233.03' LT.
1-6" DIMJ CAP
(CONTRACTOR TO COORDINATE TESTING OF FIRE SERVICE)

STA. 11+69.57, FIRE SERVICE=
BL STA. 14+76.45', 240.45' LT.
1-6" DIMJ 90° BEND

NOTE:
ALL LINES TO BE INSTALLED BY OTHERS ARE SUBJECT TO O.C.I. REVIEW.

NOTE:
CONTRACTOR TO VERIFY LOCATION AND DEPTH OF EXIST. 8" WATER LINE & UTILITIES PRIOR TO CONSTRUCTION.

STA. 10+10.45, FIRE SERVICE=
BL STA. 15+83.62', 100.43' LT.
1-6" DIMJ 22.5° BEND

STA. 10+05.39, FIRE SERVICE=
BL STA. 15+83.74, 95.37' LT.
INSTALL 8"x6" TEE, 6" VALVE, & SALVAGED FIRE HYDRANT L=20.0'
1-8"x6" REDUCER (W)
1-6" VALVE ASSY.(W)
(MJ GATE VALVE)

PLAN FIRE

2.89 L.F. OF 8" DICL PIPE
3.0

2.5 L.F. OF 8" DICL PIPE

5.06 L.F. OF 6" DICL PIPE

159.12 L.F. OF 6" PIPE

13.38 L.F. OF 6" PIPE

2" DOMESTIC WATER (BY OTHERS)

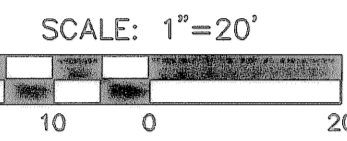
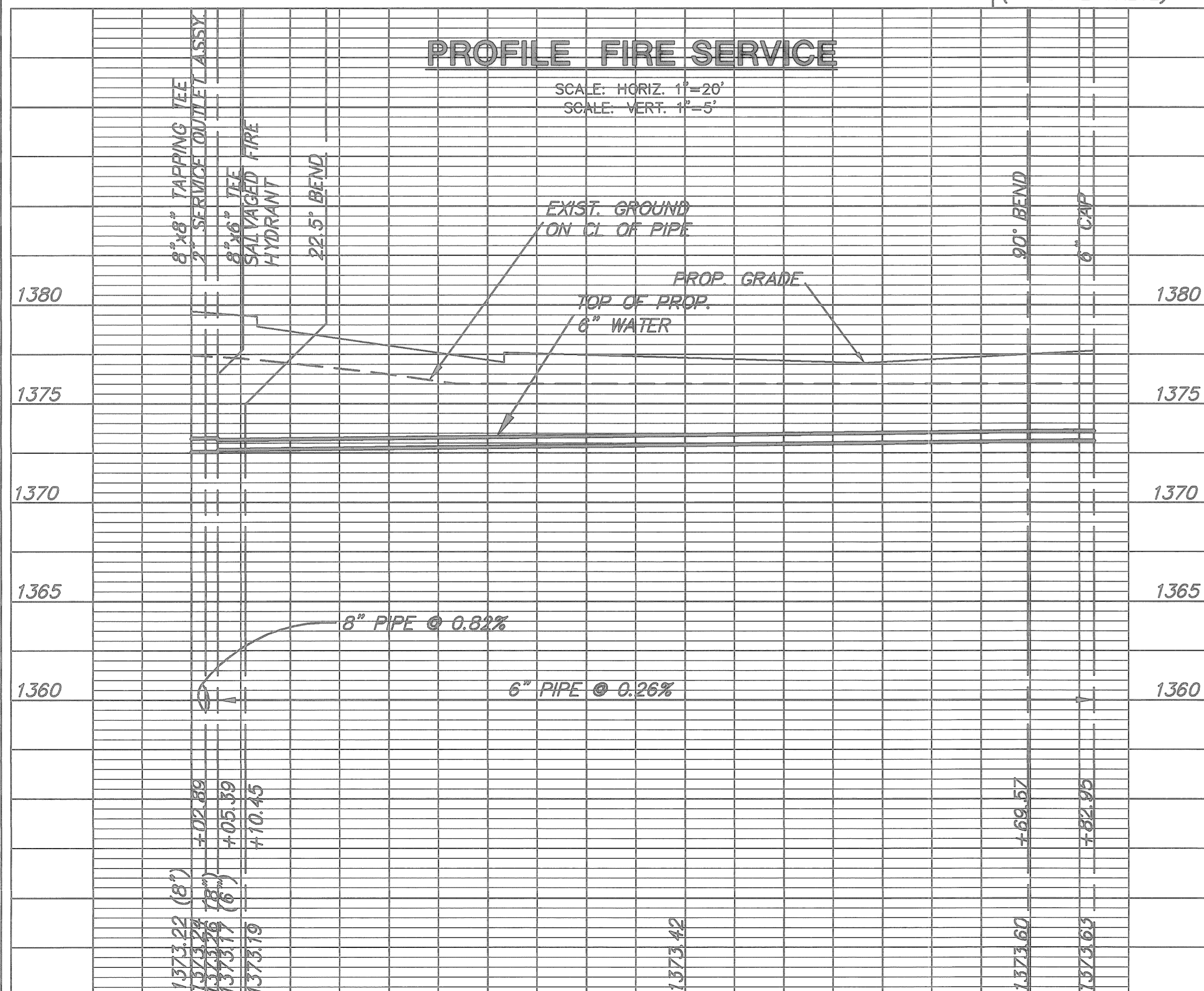
WATERFRONT ADDITION
LOT 4 BLOCK 1
TRACT 'E'

STA. 10+00.00, FIRE SERVICE=
BL STA. 15+83.87, 89.87' LT.
1-8"x8" TAPPING SLEEVE & VALVE TO BE FURNISHED & INSTALLED BY C.O.W. WATER DEPT. CONTRACTOR TO REIMBURSE C.O.W.

2" SERVICE CONNECTION (BY OTHERS)

PROFILE FIRE SERVICE

SCALE, HORIZ. 1"=20'
SCALE, VERT. 1"=5'



10

11

H:\CIVIL\02014\WANTAGE\BUILDING C\02014C1.DWG