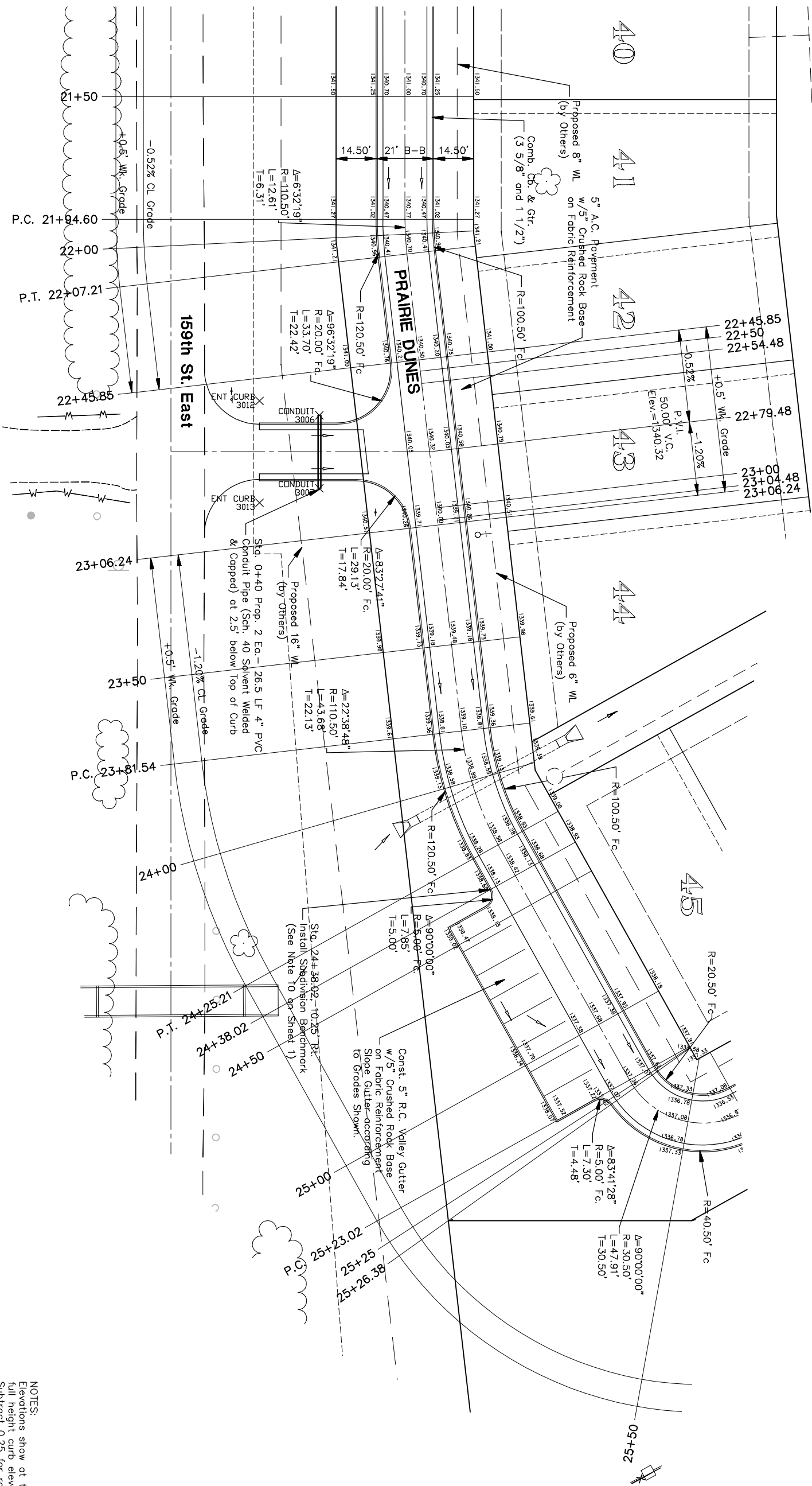
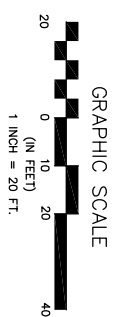


RECORD DRAWING
1/9/2008 MLT



A=6:32'19" L=12.61' R=110.50' T=6.31'

CURVE TABLE BASED ON CL RADIUS				
STATION	CL	CHORD LENGTH	R	TOTAL DEFLECTION
21+94.60 P.C.	ARC	6.30'	110.50'	1.240°
22+00.00	CL	7.21'	110.50'	1.521°
22+07.21 P.T.	ARC	6.30'	110.50'	1.240°
DEFLECTION/FOOT = 0.259256921 DEGREES				

A=22:38'48" L=43.68' R=110.50' T=22.13'

CURVE TABLE BASED ON CL RADIUS				
STATION	CL	CHORD LENGTH	R	TOTAL DEFLECTION
23+81.54 P.C.	ARC	21.53'	110.50'	4.479°
24+00.00	CL	25.00'	110.50'	5.285°
24+25.00	ARC	21.53'	110.50'	4.479°
24+25.22 P.T.	ARC	0.22'	110.50'	0.322°
DEFLECTION/FOOT = 0.259256921 DEGREES				

No.	Street and Station	From CL	Top of Curb (NE), at End of Return	Elevation
5	Prairie Dunes, 24+38.02	10.25' (NE)		1338.43

NOTES:
Elevations show at top of curb are full height curb elevations. Subtract 0.25 for roll curb elevations.
Grade from top of curb to existing ground when curb is not adjacent to proposed lots. Ensure that grades do not cause water to pond in these areas.

FINAL



POE & ASSOCIATES, INC.
CONSULTING ENGINEERS
5940 E. Central, Suite 200 ■ Wichita, KS 67208-4242
Phone 316/685-4114 ■ FAX 316/685-4444

TERRADYNE WEST ADDITION
STREET IMPROVEMENTS
PRAIRIE DUNES
CITY OF WICHITA, KANSAS
JAMES L. ARMOUR, P.E. - CITY ENGINEER
Private Project # 1799PPP O.C.A. # 607879

No.	Date	By	Approved	Revision