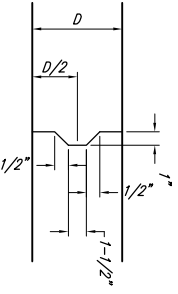
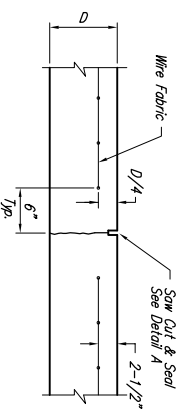


NOTE: Extra Thickness to be Subsidiary to Price of Square Yards Pavement

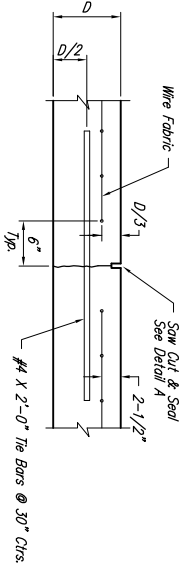
EXPANSION JOINT



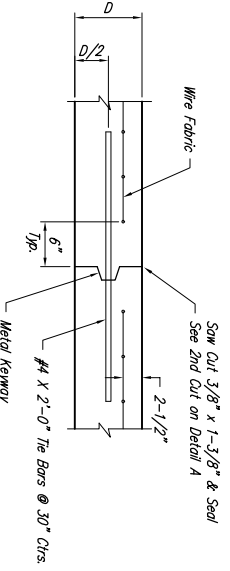
KEYWAY DETAIL



CONTRACTION JOINT DETAIL (C.J.)

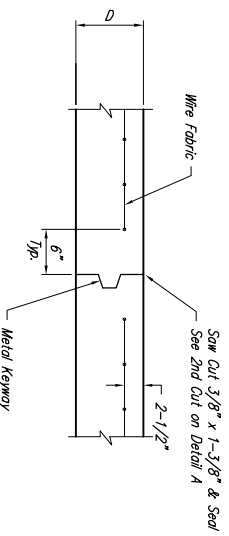


LONGITUDINAL JOINT DETAIL (L.J.)

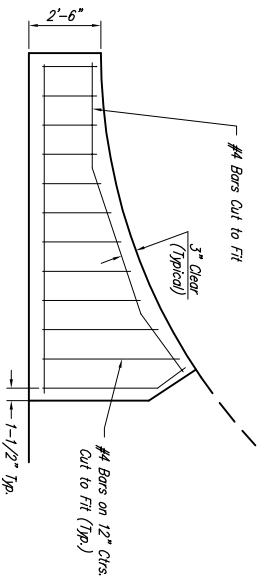


OPTIONAL LONGITUDINAL JOINT DETAIL (L.J.)

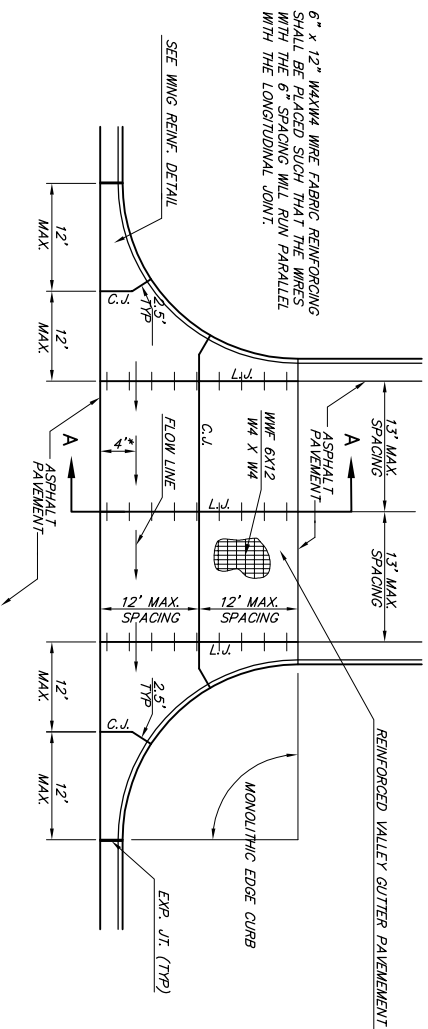
$D = 5''$



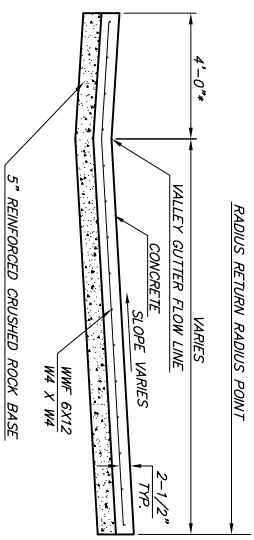
OPTIONAL CONTRACTION JOINT



WING REINFORCING DETAIL



PLAN



SECTION A-A

REINFORCED VALLEY GUTTER DETAIL

* Distance to FL is 2' at All Locations Except at Central Ave. Connection

RECORD DRAWING
1/9/2008 MLT

THE CITY OF WICHITA
REINFORCED CONCRETE VALLEY GUTTER DETAILS
 JAMES L. ARMOUR, P.E. - CITY ENGINEER
 PROJECT NUMBER: 179PPP
 SHEET 80 OF 94

No.	Date	By	Approved	Revision
1	1/9/08	MLT	JPD	Moved Curb Inlet South to New Location



POE & ASSOCIATES, INC.
 CONSULTING ENGINEERS
 5940 E. Central, Suite 200 ■ Wichita, KS 67208-4242
 Phone 316/685-4114 ■ FAX 316/685-4444

TERRADYNE WEST ADDITION
 STREET & STORM SEWER IMPROVEMENTS
 VALLEY GUTTER DETAILS
CITY OF WICHITA, KANSAS
 JAMES L. ARMOUR, P.E. - CITY ENGINEER
 Private Project # 179PPP OCA# 607879

FINAL
 Designed By: J. Ubert / J. Dickman
 Drawn By: M. Tucker
 Poe Job No.: 1809
 Date: April 2007