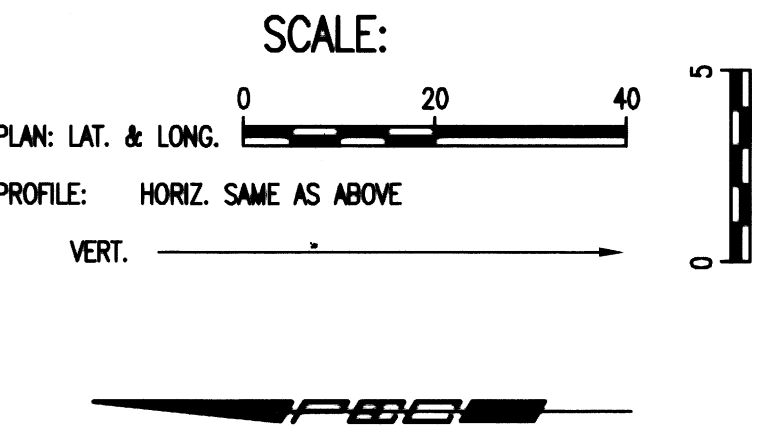
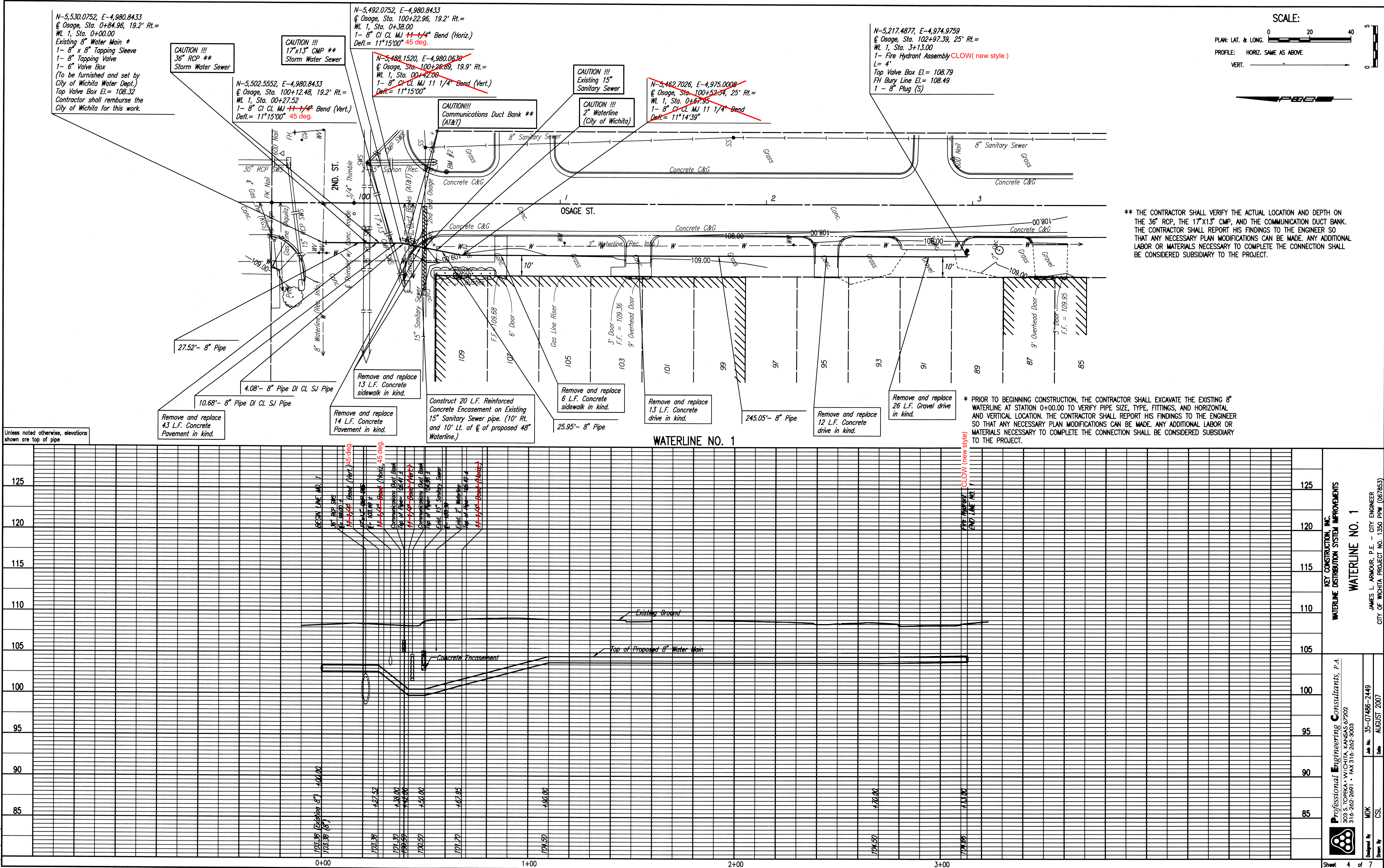


PLAN	CHECKED	CHECKED
BY		
DATE		

PROFILE	CHECKED	CHECKED
BY		
DATE		

Saved: 09-18-2007 1:30:42 PM by RFT
 010_000_0120_09-18-2007 2:57:40 PM by RFT
 C:\307\07488\07488-C-WUPD1



** THE CONTRACTOR SHALL VERIFY THE ACTUAL LOCATION AND DEPTH ON THE 36" RCP, THE 17"x13" CMP, AND THE COMMUNICATION DUCT BANK. THE CONTRACTOR SHALL REPORT HIS FINDINGS TO THE ENGINEER SO THAT ANY NECESSARY PLAN MODIFICATIONS CAN BE MADE. ANY ADDITIONAL LABOR OR MATERIALS NECESSARY TO COMPLETE THE CONNECTION SHALL BE CONSIDERED SUBSIDIARY TO THE PROJECT.

* PRIOR TO BEGINNING CONSTRUCTION, THE CONTRACTOR SHALL EXCAVATE THE EXISTING 8" WATERLINE AT STATION 0+00.00 TO VERIFY PIPE SIZE, TYPE, FITTINGS, AND HORIZONTAL AND VERTICAL LOCATION. THE CONTRACTOR SHALL REPORT HIS FINDINGS TO THE ENGINEER SO THAT ANY NECESSARY PLAN MODIFICATIONS CAN BE MADE. ANY ADDITIONAL LABOR OR MATERIALS NECESSARY TO COMPLETE THE CONNECTION SHALL BE CONSIDERED SUBSIDIARY TO THE PROJECT.

KEY CONSTRUCTION, INC.
 WATERLINE DISTRIBUTION SYSTEM IMPROVEMENTS
 WATERLINE NO. 1

Professional Engineering Consultants, P.A.
 303 S. TOPEKA • WICHITA, KANSAS 67202
 316-262-2691 • FAX 316-262-3003

Job No. 35-07486-2449
 Date: AUGUST 2007

Designed by MDK
 Drawn by CSI

JAMES L. ARMOUR, P.E. - CITY ENGINEER
 CITY OF WICHITA PROJECT NO. 1350 PPM (067853)

Sheet 4 of 7