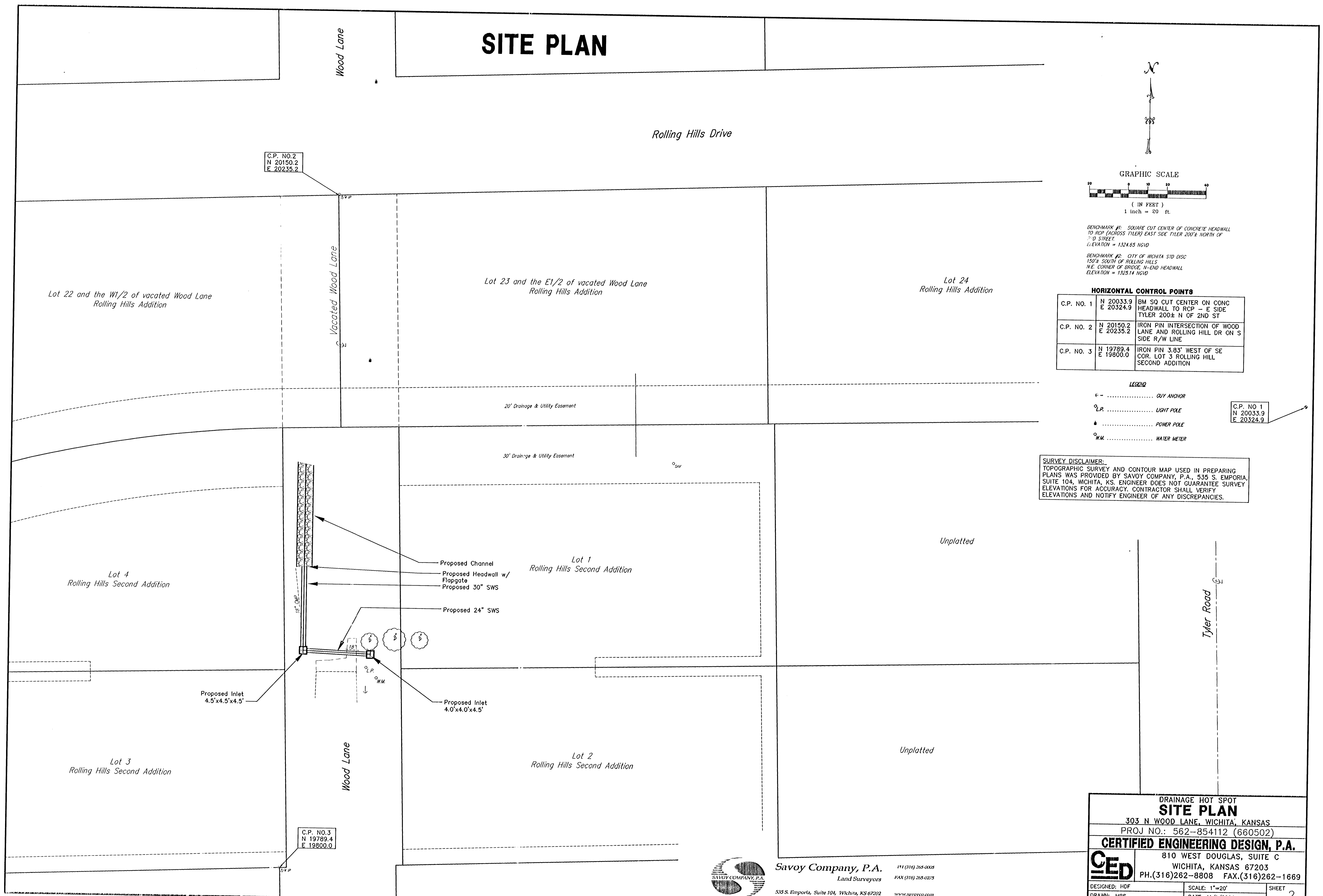


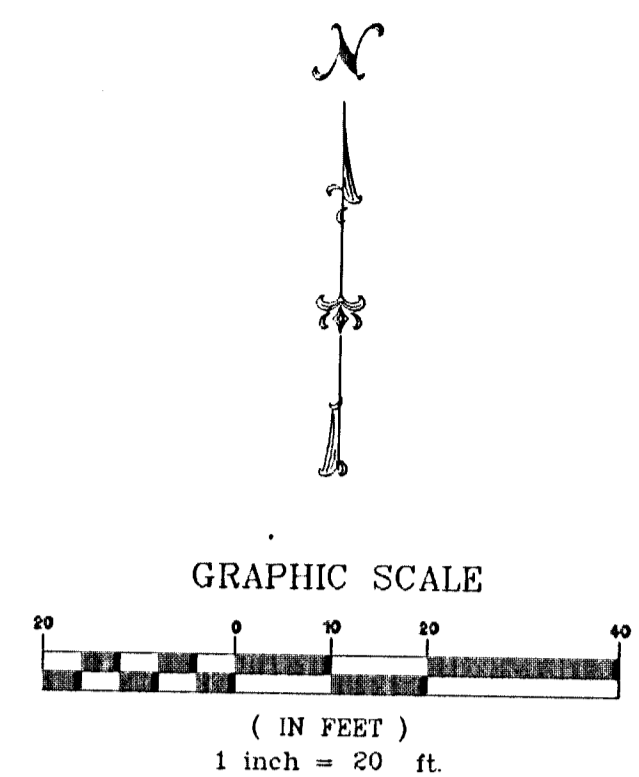
SITE PLAN



C.P. NO. 2
N 20150.2
E 20235.2

C.P. NO. 3
N 19789.4
E 19800.0

C.P. NO. 1
N 20033.9
E 20324.9



BENCHMARK #1: SQUARE CUT CENTER OF CONCRETE HEADWALL TO RCP (ACROSS TYLER) EAST SIDE TYLER 200'± NORTH OF 2ND STREET.
ELEVATION = 1324.85 NGVD

BENCHMARK #2: CITY OF WICHITA STD DISC 150'± SOUTH OF ROLLING HILLS N.E. CORNER OF BRIDGE, N-END HEADWALL
ELEVATION = 1325.14 NGVD

HORIZONTAL CONTROL POINTS	
C.P. NO. 1	N 20033.9 E 20324.9 BM SQ CUT CENTER ON CONC HEADWALL TO RCP - E SIDE TYLER 200± N OF 2ND ST
C.P. NO. 2	N 20150.2 E 20235.2 IRON PIN INTERSECTION OF WOOD LANE AND ROLLING HILL DR ON S SIDE R/W LINE
C.P. NO. 3	N 19789.4 E 19800.0 IRON PIN 3.83' WEST OF SE COR. LOT 3 ROLLING HILL SECOND ADDITION

- LEGEND
- ⊕ GUY ANCHOR
 - ⊙ LIGHT POLE
 - ⊙ POWER POLE
 - ⊙ WATER METER

SURVEY DISCLAIMER:
TOPOGRAPHIC SURVEY AND CONTOUR MAP USED IN PREPARING PLANS WAS PROVIDED BY SAVOY COMPANY, P.A., 535 S. EMPORIA, SUITE 104, WICHITA, KS. ENGINEER DOES NOT GUARANTEE SURVEY ELEVATIONS FOR ACCURACY. CONTRACTOR SHALL VERIFY ELEVATIONS AND NOTIFY ENGINEER OF ANY DISCREPANCIES.

**DRAINAGE HOT SPOT
SITE PLAN**

303 N WOOD LANE, WICHITA, KANSAS
PROJ NO.: 562-854112 (660502)

CERTIFIED ENGINEERING DESIGN, P.A.

810 WEST DOUGLAS, SUITE C
WICHITA, KANSAS 67203
PH.(316)262-8808 FAX.(316)262-1669

DESIGNED: HDF	SCALE: 1"=20'	SHEET
DRAWN: MRS	DATE: 11/1/2004	2
CHECKED: HDF	CED FILE: N WOOD H...DWG	TOTAL 7

Savoy Company, P.A.
Land Surveyors
535 S. Emporia, Suite 104, Wichita, KS 67202
www.savoyco.com

PH (316) 262-0005
FAX (316) 262-0275