

CITY OF WICHITA

STORMWATER PUMP STATION NO. 1

REPLACE PUMP 1 & 5 MOTORS & STARTERS

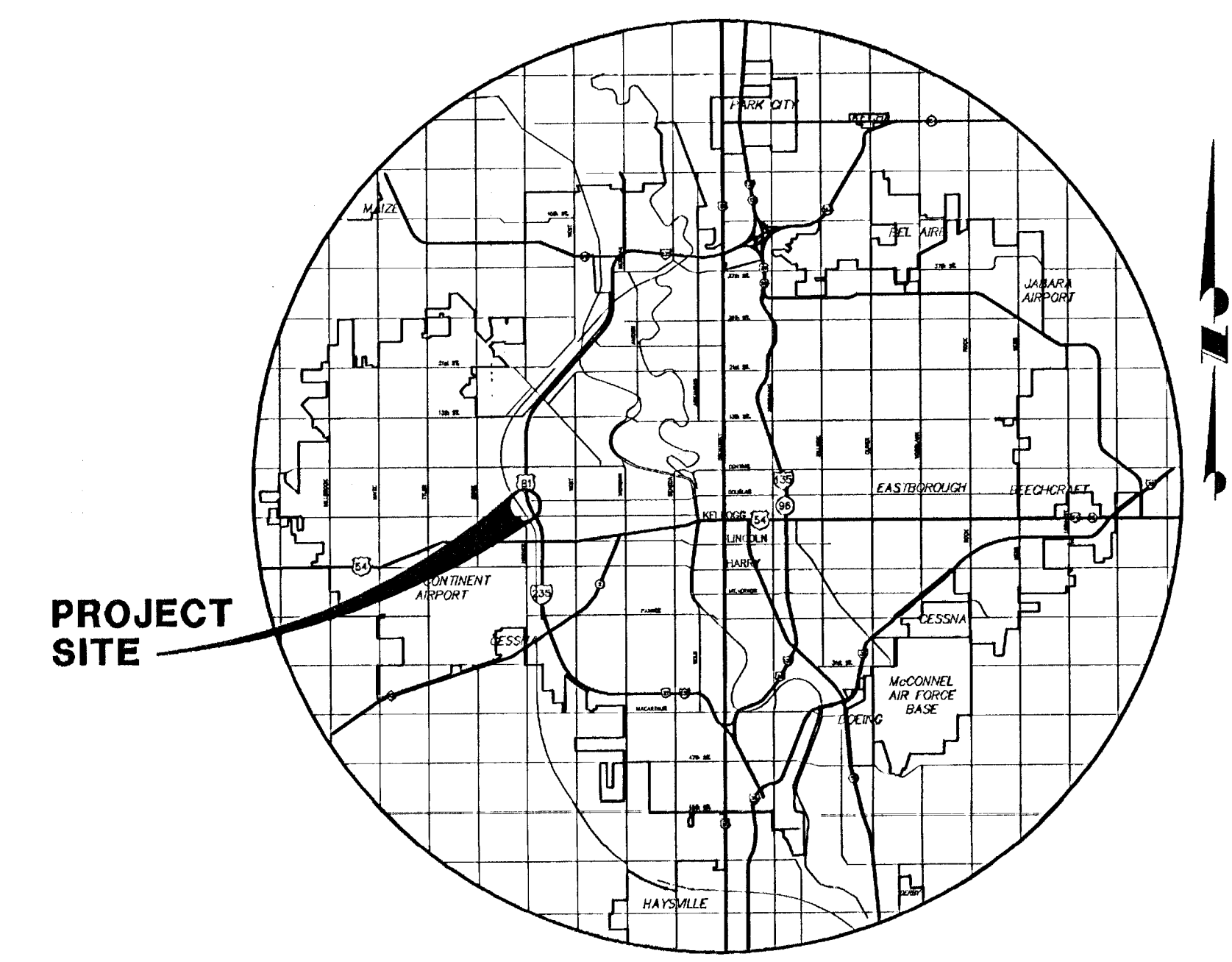
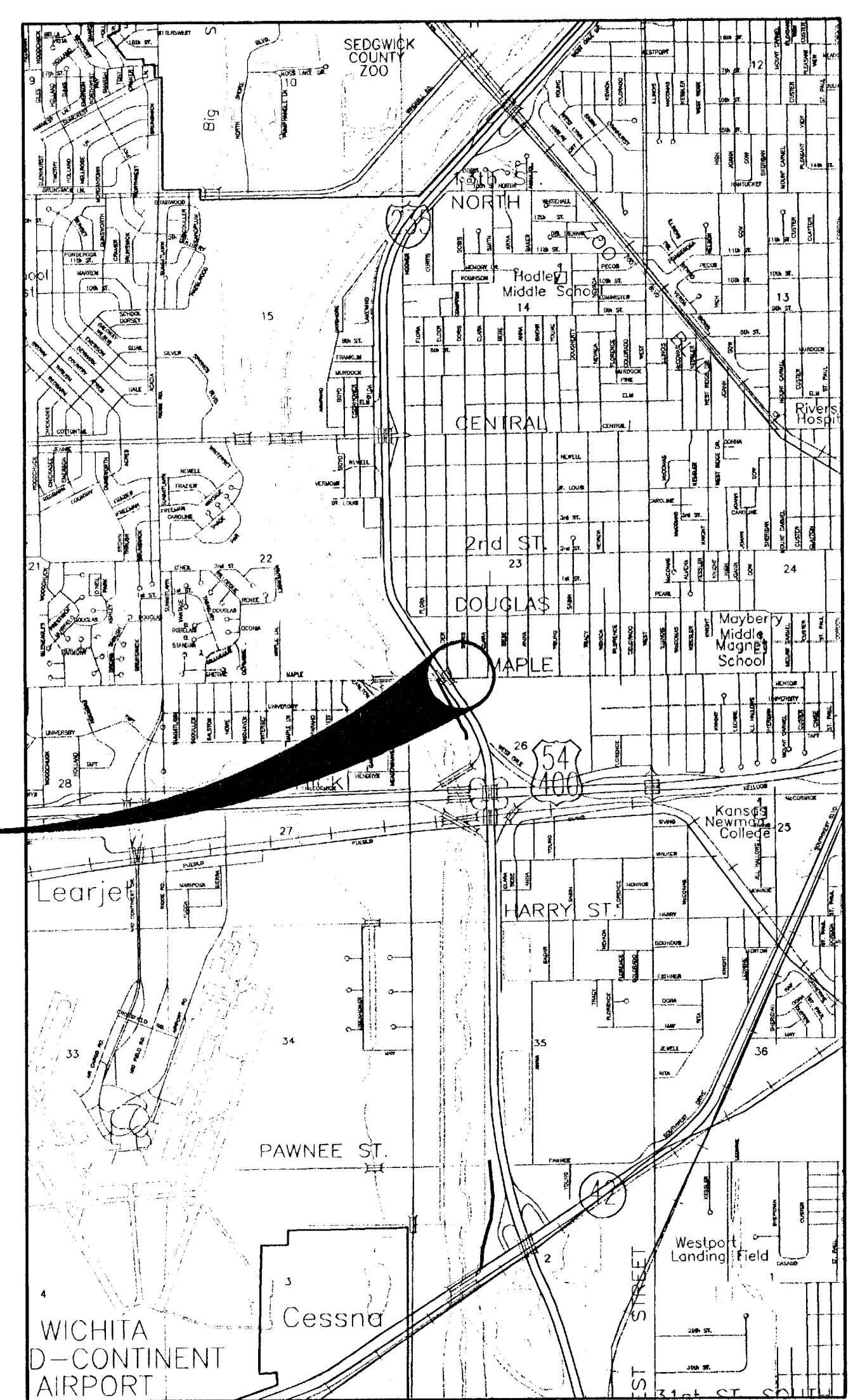
SEPTEMBER, 2002

GENERAL NOTES

1. THE CONTRACTOR SHALL PROVIDE ALL MATERIALS AND PERFORM ALL WORK IN ACCORDANCE WITH PROJECT SPECIFICATIONS, CITY OF WICHITA STANDARD SPECIFICATIONS AND AS INDICATED.
2. THE CONTRACTOR SHALL CONTAIN HIS OPERATIONS TO PERMIT TRAFFIC THROUGH AND ALONG ALL COUNTY, CITY AND STATE ROADS. THE CONTRACTOR SHALL ERECT WARNING SIGNS, DETOUR SIGNS, FLASHING LIGHTS, AND BARRICADES TO ENSURE SAFETY AS DIRECTED IN THE GENERAL CONDITIONS OF THE SPECIFICATIONS.
3. THE CONTRACTOR SHALL BE REQUIRED TO NOTIFY THE CITY AND ALL UTILITY COMPANIES THROUGH KANSAS ONE-CALL PRIOR TO THE BEGINNING OF CONSTRUCTION AND SHALL REQUEST THAT ANY EXISTING LINES BE FLAGGED.
CITY OF WICHITA STORM WATER DEPT. -DOUG ARVIDSON
(316) 268-4090
KANSAS ONE-CALL
1-(800) 344-7233 OR 687-2470 (LOCAL WICHITA)
4. THE UTILITIES (WATER, GAS, TELEPHONE, ELECTRICAL, ETC.) AS LOCATED ON THE PLANS ARE APPROXIMATE LOCATIONS ONLY. THE CONTRACTOR SHALL EXERCISE EXTREME CAUTION DURING ANY TRENCHING OPERATIONS TO AVOID DAMAGING THESE LINES. THE CONTRACTOR SHALL COORDINATE ANY TRENCHING OPERATIONS THROUGH KANSAS ONE-CALL TO AVOID ANY DAMAGE TO THE LINES. IF ANY LINES ARE DAMAGED THEY SHALL BE REPLACED AT THE CONTRACTOR'S EXPENSE.
5. DEMOLITION MATERIALS BECOME THE PROPERTY OF THE CONTRACTOR AND SHALL BE REMOVED FROM THE SITE BY THE CONTRACTOR TO AN APPROVED DISPOSAL SITE UNLESS OTHERWISE NOTED.
6. THE CONTRACTOR SHALL CONDUCT WORK IN A MANNER WHICH ALLOWS STORM WATER PUMPS TO REMAIN IN SERVICE DURING RAIN FALL EVENTS AS REQUIRED BY THE OWNER. COST OF MAINTAINING FLOW OF STORM WATER THROUGH CONSTRUCTION WILL NOT BE PAID FOR SEPARATELY AND SHALL BE CONSIDERED SUBSIDIARY TO THE OTHER ITEMS OF WORK.
7. THE CONTRACTOR SHALL OBTAIN ALL BUILDING PERMITS REQUIRED BY CITY AND/OR COUNTY AGENCIES.

CITY OF WICHITA, KANSAS
CHRISTOPHER M. CARRIER, STORM WATER ENGINEER

CITY OF WICHITA

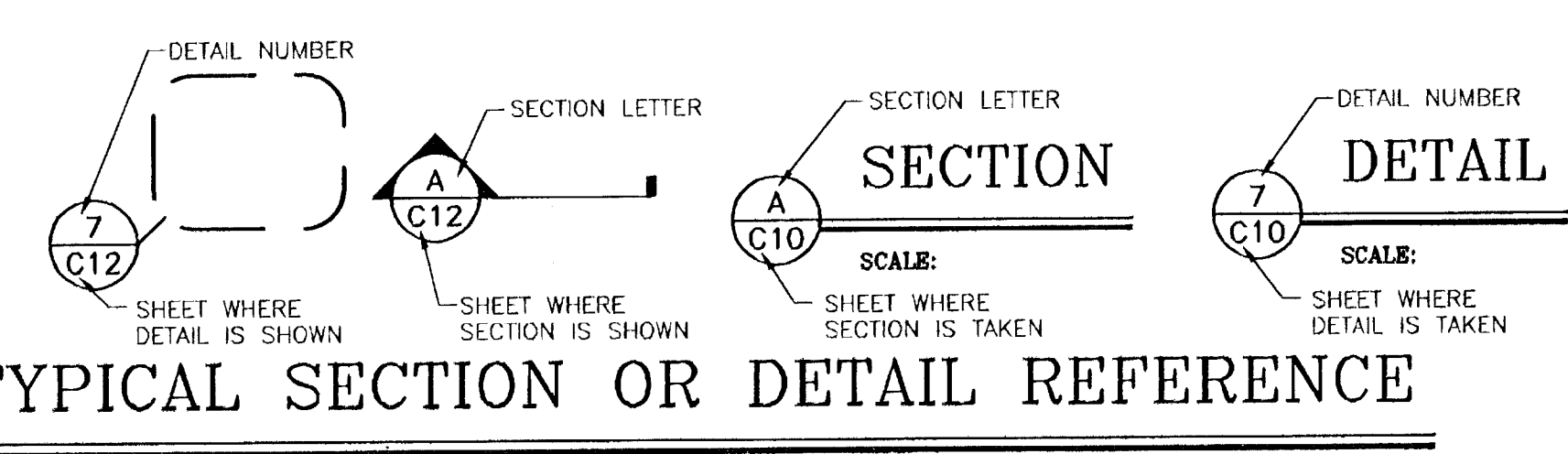


STORM WATER PUMP STATION NO. 1

VICINITY MAP

INDEX OF DRAWINGS

SHEET NO.	DESCRIPTION
G1/1	TITLE SHEET, MAPS AND GENERAL NOTES
E1/2	ONE-LINE DIAGRAM
E2/2	ELECTRICAL FLOOR PLAN
D1/1	DEMOLITION PLAN & ONE-LINE



LOCATION MAP



PLANS PREPARED BY:
MKEC ENGINEERING CONSULTANTS, INC.
WICHITA, KANSAS

411 N. WEBB ROAD
WICHITA, KS. 67206
316-684-9600

CITY OF WICHITA, KANSAS
STORMWATER PUMP STATION NO. 1
REPLACE PUMP 1 & 5 MTRS & STARTERS

PROJECT NAME

TITLE SHEET, MAPS AND GENERAL NOTES

SHEET TITLE

DESIGN BY: SLA	DRAWN BY: RES	CHECKED BY: SLA
DATE: SEPTEMBER, 2002	DRAWING NAME: 02141D1	SHEET / OF: G1 / 1