

FHWA REGION	STATE	PROJECT NO.	YEAR	SHEET NO.	TOTAL SHEETS
7		87ER-164(1)	94	2	28

P.O.T. Sta. 7+02.07  
 3/4" Iron Pipe @ P.O.T.  
 37.15' N.E. to Chiseled "+" on top curb  
 39.03' S.E.  
 55.80' E. to 3/4" Iron Pipe at back of curb

P.O.T. Sta. 7+57.87  
 3/4" Iron Pipe @ P.O.T.  
 16.63' S.E. to nail & cap in Elm tree  
 30.54' N. to Chiseled "+" on top curb  
 66.50' S.S.E. to 1/2" rebar, R-43 Flood control trav.

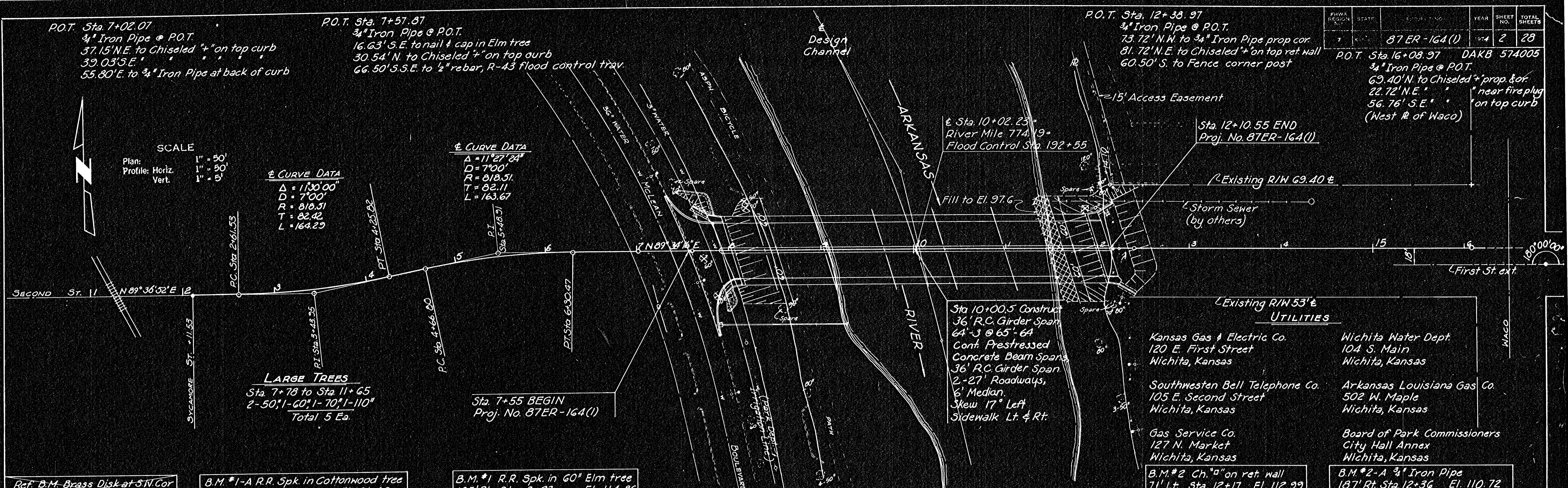
P.O.T. Sta. 12+38.97  
 3/4" Iron Pipe @ P.O.T.  
 73.72' N.W. to 3/4" Iron Pipe prop cor.  
 81.72' N.E. to Chiseled "+" on top ret. wall  
 60.50' S. to Fence corner post

P.O.T. Sta. 16+08.97 DAKB 574005  
 3/4" Iron Pipe @ P.O.T.  
 69.40' N. to Chiseled "+" prop & cor.  
 22.72' N.E. " near fire plug  
 56.76' S.E. " on top curb  
 (West # of Waco)

SCALE  
 Plan: 1" = 50'  
 Profile: Horiz. 1" = 50'  
 Vert. 1" = 5'

± CURVE DATA  
 Δ = 113°00'  
 D = 7°00'  
 R = 810.51  
 T = 82.42  
 L = 164.29

± CURVE DATA  
 Δ = 111°27'24"  
 D = 7°00'  
 R = 810.51  
 T = 82.11  
 L = 163.67



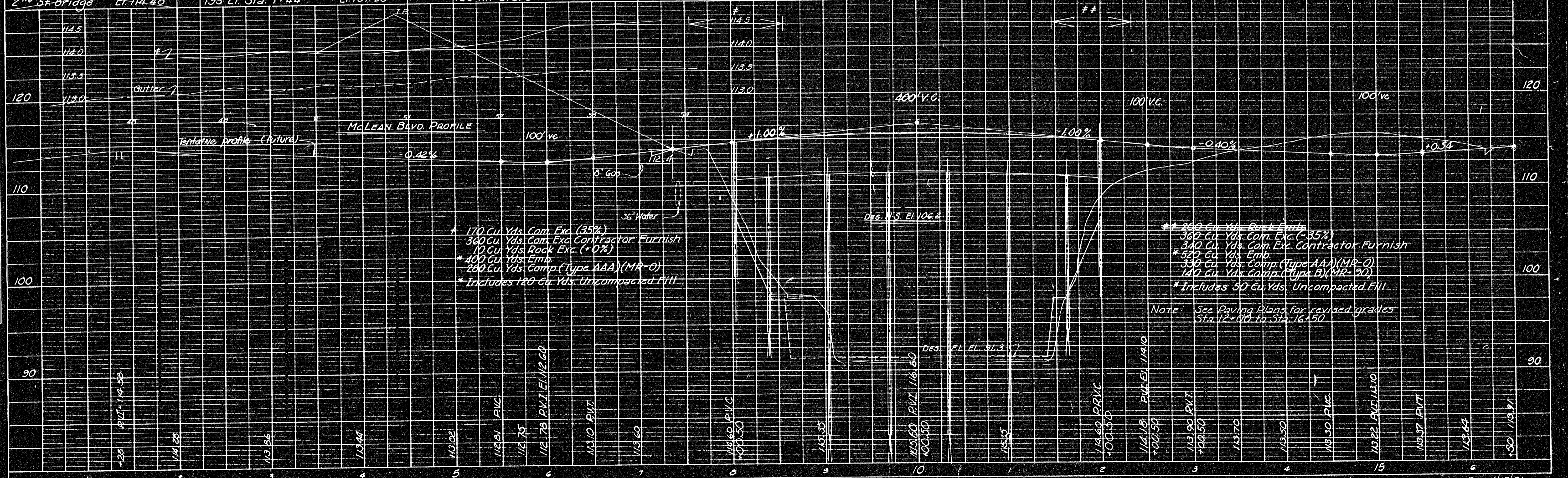
Ref. B.M. Brass Disk at SW Cor  
 2nd St Bridge El. 114.48

B.M. #1-A R.R. Spk. in Cottonwood tree  
 193' Lt. Sta. 7+44 El. 101.28

B.M. #1 R.R. Spk. in 60" Elm tree  
 185' Rt. Sta. 8+23 El. 114.86

B.M. #2 Ch. "a" on ret. wall  
 71' Lt. Sta. 12+17 El. 112.99

B.M. #2-A 3/4" Iron Pipe  
 187' Rt. Sta. 12+36 El. 110.72



\* 170 Cu. Yds. Com. Exc. (35%)  
 340 Cu. Yds. Com. Exc. Contractor Furnish  
 10 Cu. Yds. Rock Exc. (+0%)  
 \* 400 Cu. Yds. Emb.  
 280 Cu. Yds. Comp. (Type AAA) (MR-0)  
 \* Includes 120 Cu. Yds. Uncompacted Fill

\* 240 Cu. Yds. Road Emb.  
 360 Cu. Yds. Com. Exc. (-35%)  
 340 Cu. Yds. Com. Exc. Contractor Furnish  
 \* 540 Cu. Yds. Emb.  
 330 Cu. Yds. Comp. (Type AAA) (MR-0)  
 140 Cu. Yds. Comp. (Type B) (MR-90)  
 \* Includes 50 Cu. Yds. Uncompacted Fill

Note: See Paving Plans for revised grades  
 Sta. 12+00 to Sta. 16+50

DATE	BY

DATE	BY